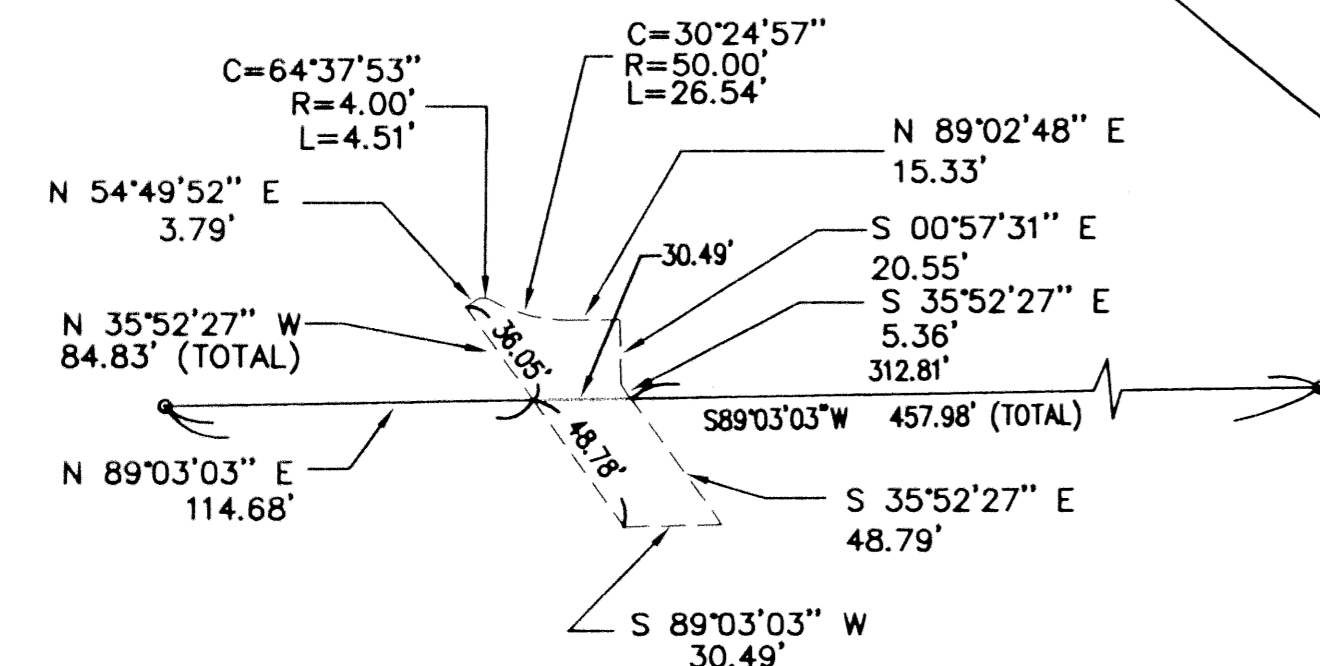
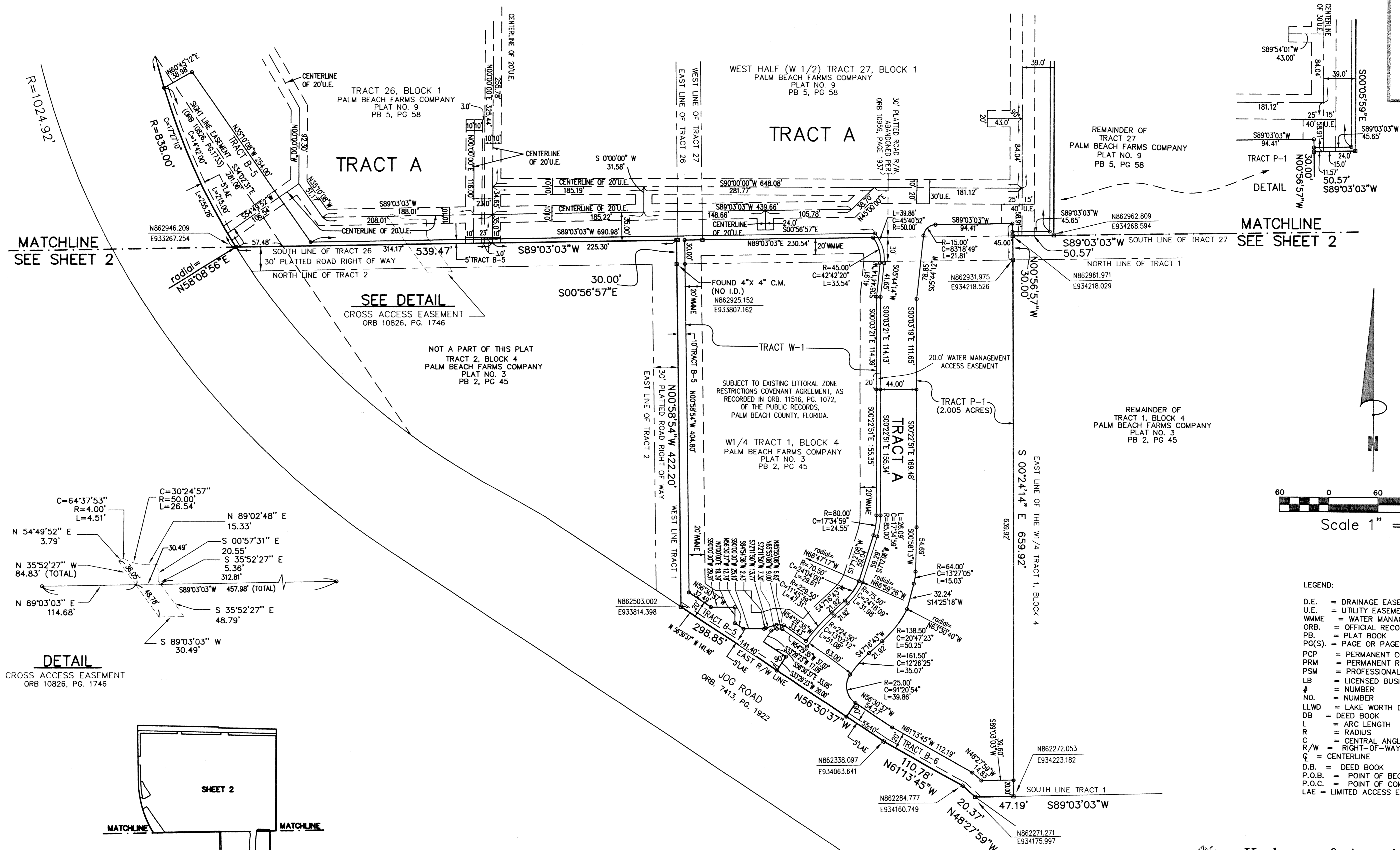


PALM BEACH PLAZA MUPD

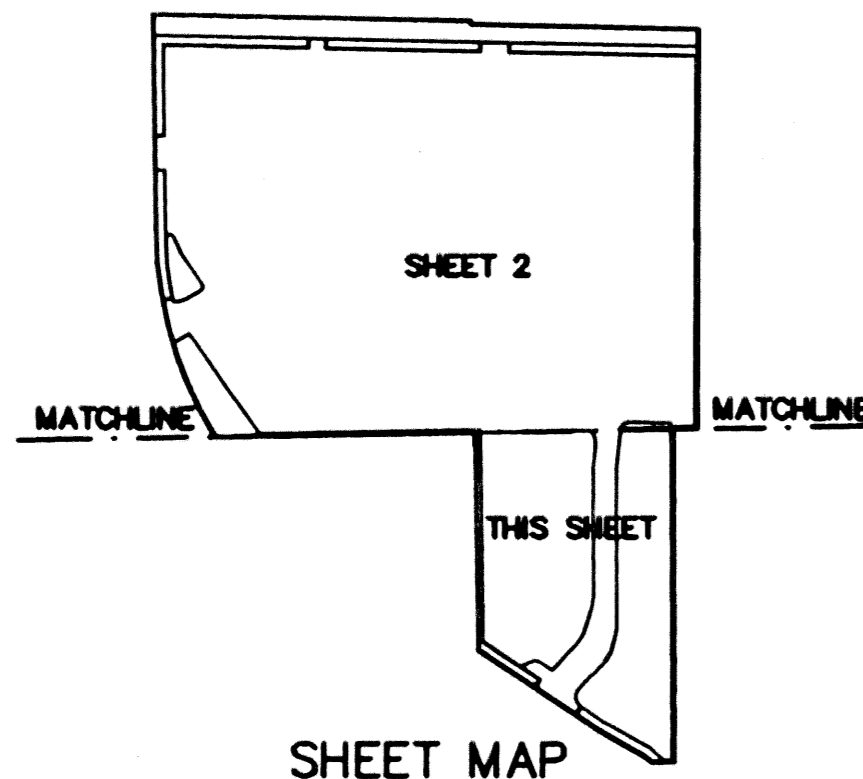
A REPLAT OF TRACT 26, AND THE WEST ONE-HALF OF TRACT 27, BLOCK 1, PALM BEACH FARMS COMPANY PLAT No.9, RECORDED IN PLAT BOOK 5, PAGE 58, AND THE WEST ONE-QUARTER OF TRACT 1, BLOCK 4, PALM BEACH FARMS COMPANY PLAT No.3 RECORDED IN PLAT BOOK 2, PAGE 45, LYING IN SECTION 27, TOWNSHIP 43 SOUTH, RANGE 42 EAST, PALM BEACH COUNTY, FLORIDA

APRIL 1999

SHEET 3 OF 3



DETAIL
CROSS ACCESS EASEMENT
ORB 10826, PG. 1746



- LEGEND:**
- D.E. = DRAINAGE EASEMENT
 - U.E. = UTILITY EASEMENT
 - WMME = WATER MANAGEMENT MAINTENANCE EASEMENT
 - ORB. = OFFICIAL RECORDS BOOK
 - PB. = PLAT BOOK
 - PG(S). = PAGE OR PAGES
 - PCP = PERMANENT CONTROL POINT
 - PRM = PERMANENT REFERENCE MONUMENT
 - PSM = PROFESSIONAL SURVEYOR & MAPPER
 - LB = LICENSED BUSINESS
 - # = NUMBER
 - NO. = NUMBER
 - LLWD = LAKE WORTH DRAINAGE DISTRICT
 - DB = DEED BOOK
 - L = ARC LENGTH
 - R = RADIUS
 - C = CENTRAL ANGLE
 - R/W = RIGHT-OF-WAY
 - CL = CENTERLINE
 - D.B. = DEED BOOK
 - P.O.B. = POINT OF BEGINNING
 - P.O.C. = POINT OF COMMENCEMENT
 - LAE = LIMITED ACCESS EASEMENT

SUBDIVISION Palm Beach Plaza MUPD
 BOOK 40 PAGE 40
 FLOOD ZONE 1504
 ZONING MUPO
 QUAD # 31
 SE 011
 ZIP CODE 33417
 PUD NAME Palm Beach Plaza

Keshavarz & Associates, Inc.
 CONSULTING ENGINEERS - SURVEYORS
 1280 N. Congress Avenue, Suite 206
 West Palm Beach, Florida 33409
 Tel: (561) 689-8600 Fax: (561) 689-7476
 THIS INSTRUMENT WAS PREPARED BY CHARLES H. ANDERSON
 IN THE OFFICES OF KESHAVARZ & ASSOCIATES, INC.
 LICENSED BUSINESS No. 4897