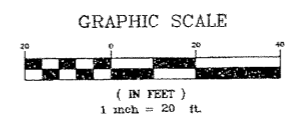
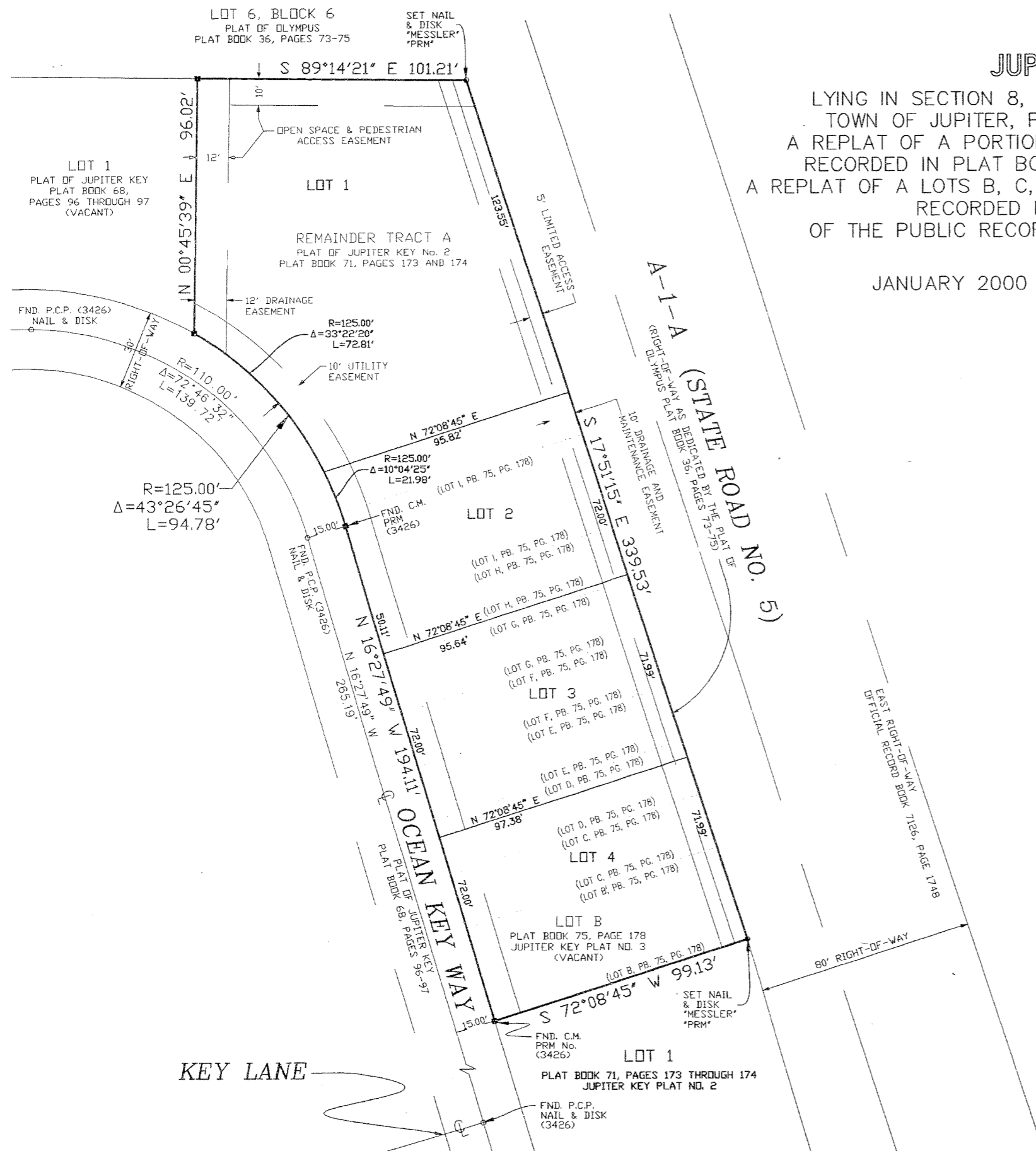


PLAT OF JUPITER KEY NO. 4

LYING IN SECTION 8, TOWNSHIP 41 SOUTH, RANGE 43 EAST,
TOWN OF JUPITER, PALM BEACH COUNTY, FLORIDA, BEING
A REPLAT OF A PORTION OF TRACT A, JUPITER KEY PLAT No. 2
RECORDED IN PLAT BOOK 71, PAGES 173 THROUGH 174, AND
A REPLAT OF A LOTS B, C, D, E, F, G, H & I, JUPITER KEY PLAT No. 3
RECORDED IN PLAT BOOK 75, PAGE 178
OF THE PUBLIC RECORDS OF PALM BEACH COUNTY, FLORIDA

JANUARY 2000

SHEET 2 OF 2



THIS INSTRUMENT WAS PREPARED BY
ROBERT P. BLASZYK, P.S.M. IN THE
OFFICES OF MESSLER & ASSOCIATES

Messler & Associates
CONSULTING ENGINEERS - LB3616
11211 Prosperity Farms Road, Suite C-301, Palm Beach Gardens, Florida 33410
Phone (561) 627-2226 Fax (561) 624-1569