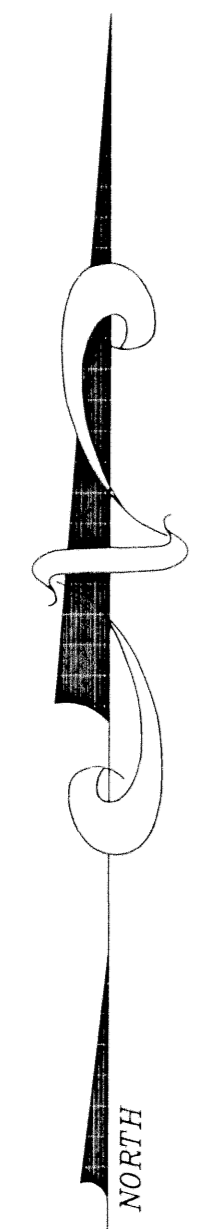
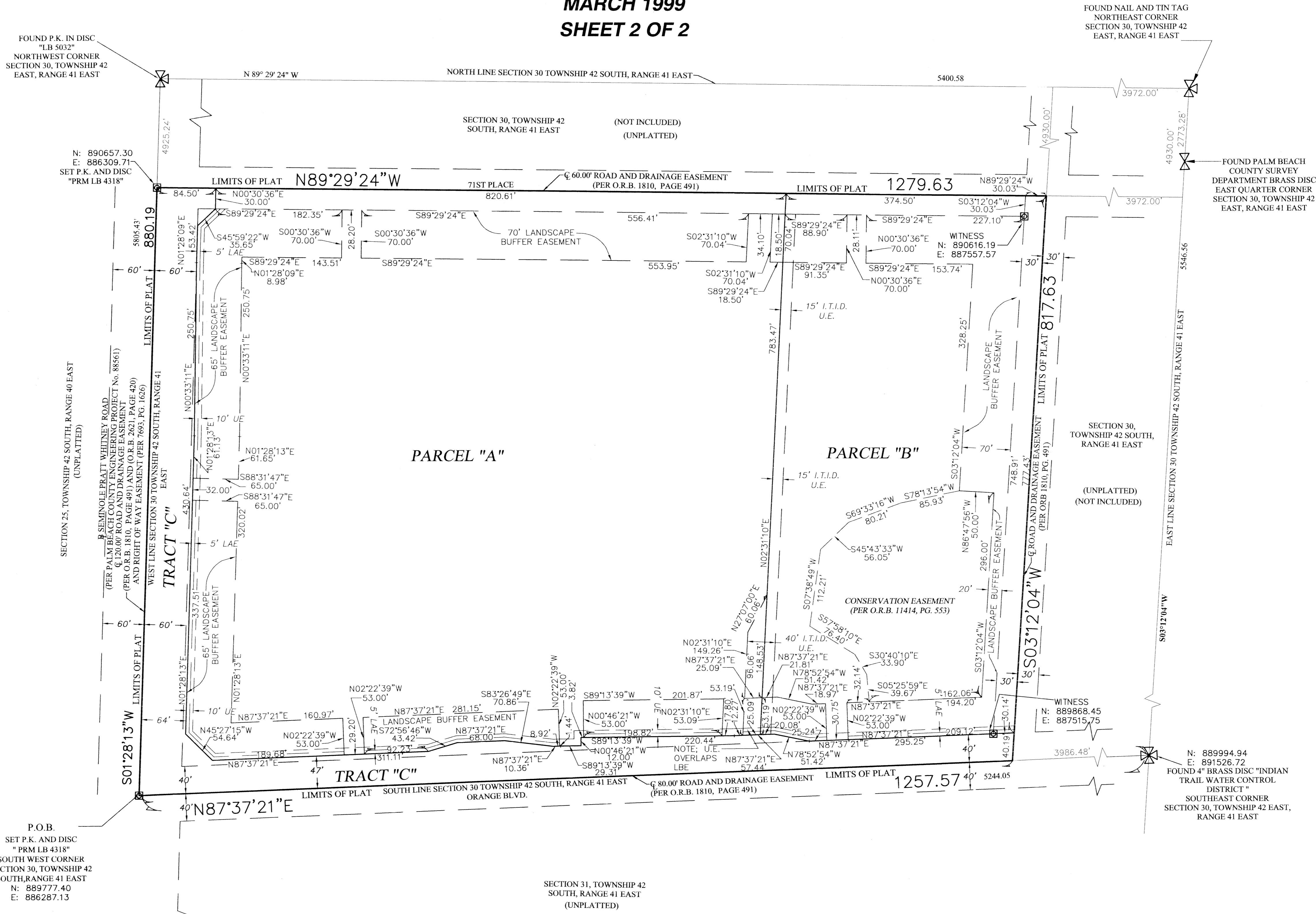


PRATT AND ORANGE MUPD
BEING A PARCEL OF LAND LYING WITHIN
SECTION 30, TOWNSHIP 42 SOUTH, RANGE 41
EAST, PALM BEACH COUNTY FLORIDA.
MARCH 1999
SHEET 2 OF 2

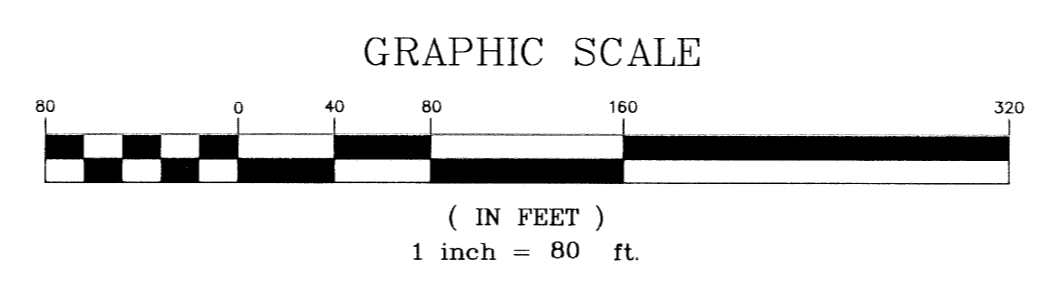


SUBDIVISION Pratt and Orange
 BOOK 67
 FLOOD ZONE 8
 QUAD # 24
 SE 9E-23
 TAZ 1071
 PUD NAME Pratt and Orange

P.O.B.
 SET P.K. AND DISC
 PRM LB 4318
 SOUTH WEST CORNER
 SECTION 30, TOWNSHIP 42
 SOUTH, RANGE 41 EAST
 N: 889777.40
 E: 886287.13

LEGEND:

- LB = LICENCED BUSINESS
- ⊙ = CENTERLINE
- = BASELINE
- O.R.B. = OFFICAL RECORDS BOOK
- P.K. = PARKER AND KALON NAIL
- U.E. = UTILITY EASEMENT
- LBE = LANDSCAPE BUFFER EASEMENT
- LAE = LIMITED ACCESS EASEMENT
- ITID = INDIAN TRAIL IMPROVEMENT DISTRICT
- P.O.B. = POINT OF BEGINNING



PRATT AND ORANGE MUPD	
	NICK MILLER, INC. <i>Surveying & Mapping Consultants</i>
	SUITE 105 2560 RCA BLVD. PALM BEACH GARDENS, FLORIDA 33410 TEL 561 627-5200 FAX 561 627-0983 D.B.P.R. LICENSED BUSINESS No. 4318
SHEET NO.	SCALE: 1"=80'
2 OF 2	DATE: MARCH 1999
	JOB NO. 97060
	FILE: 91060pS_2.DWG