

OLIVE TREE - PARCEL 5A

BEING A REPLAT OF A PORTION OF OLIVE TREE - PHASE 5B
OF THE RIVER BRIDGE P.U.D., (P.B. 81, PGS. 168 - 169)
LYING IN THE WEST 1/2 OF SECTION 10, TOWNSHIP 44 SOUTH, RANGE 42 EAST,
CITY OF GREENACRES, PALM BEACH COUNTY, FLORIDA.
FEBRUARY 2000 SHEET 3 OF 4

THIS INSTRUMENT WAS PREPARED BY:
GEORGE D. GIBSON III, P.S.M.

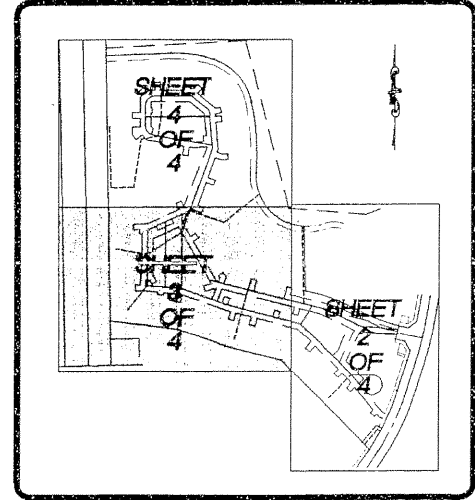


1300 CORPORATE CENTER WAY
SUITE 201
WELLINGTON
FLORIDA 33414
(561)798-9981
FAX: (561)795-9408

78

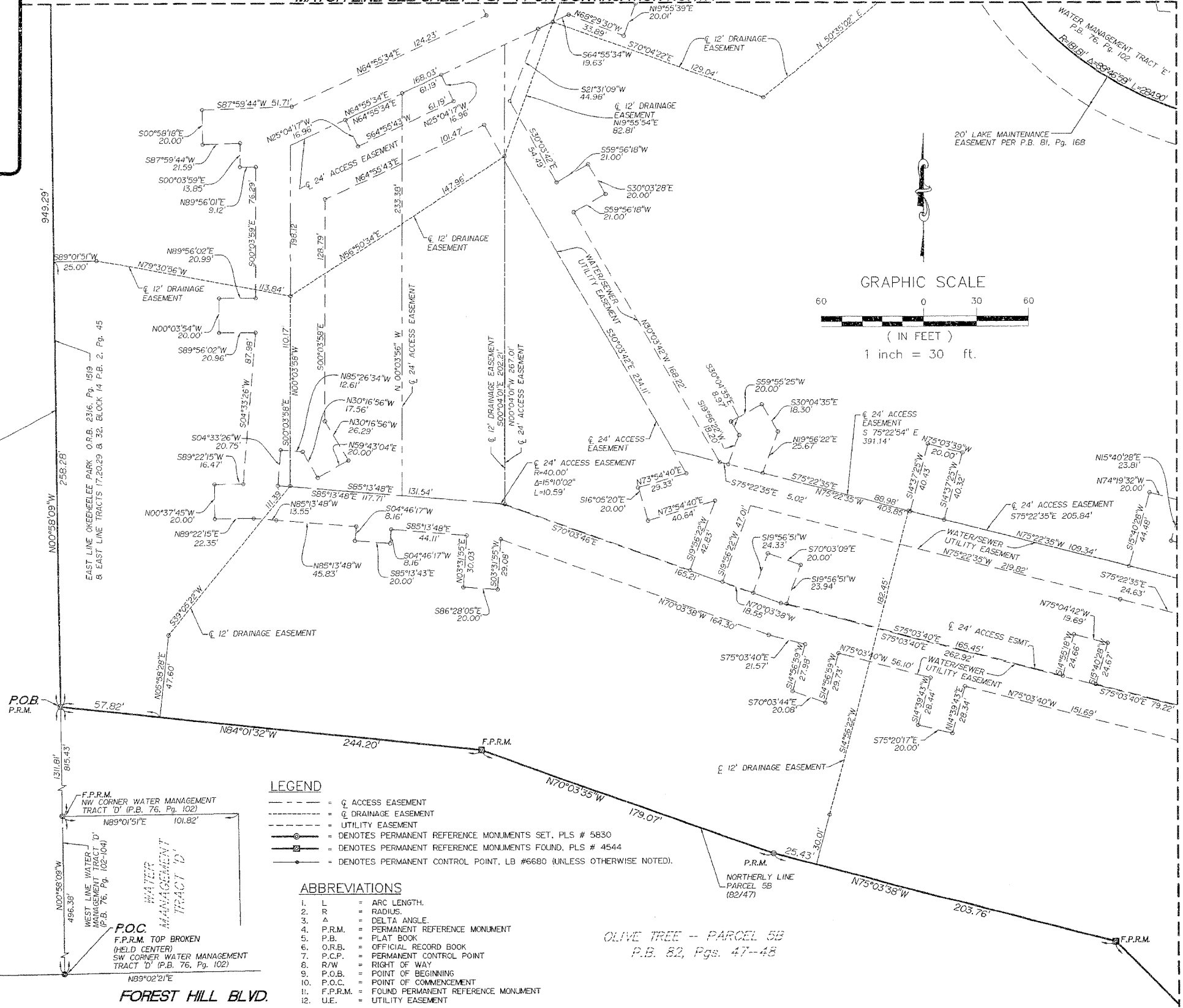
STATE OF FLORIDA
COUNTY OF WEST PALM BEACH
THIS PLAT WAS FILED FOR RECORD
AT _____ THIS _____ 2000
DAY OF _____
AND DULY RECORDED IN PLAT BOOK
_____ PAGES _____ THROUGH _____

DOROTHY H. WILKEN
CLERK OF CIRCUIT COURT
BY: _____



KEYMAP

MATCH LINE SEE SHEET 4 OF 4 FOR CONTINUATION NORTH



MATCH LINE SEE SHEET 2 OF 4 FOR CONTINUATION EAST

LEGEND

- - - - - = 12' DRAINAGE EASEMENT
- - - - - = 24' ACCESS EASEMENT
- - - - - = UTILITY EASEMENT
- = DENOTES PERMANENT REFERENCE MONUMENTS SET, PLS # 5830
- = DENOTES PERMANENT REFERENCE MONUMENTS FOUND, PLS # 4544
- = DENOTES PERMANENT CONTROL POINT, LB #6680 (UNLESS OTHERWISE NOTED).

ABBREVIATIONS

- 1. L = ARC LENGTH.
- 2. R = RADIUS.
- 3. Δ = DELTA ANGLE.
- 4. P.R.M. = PERMANENT REFERENCE MONUMENT
- 5. P.B. = PLAT BOOK
- 6. O.R.B. = OFFICIAL RECORD BOOK
- 7. P.C.P. = PERMANENT CONTROL POINT
- 8. R/W = RIGHT OF WAY
- 9. P.O.B. = POINT OF BEGINNING
- 10. P.O.C. = POINT OF COMMENCEMENT
- 11. F.P.R.M. = FOUND PERMANENT REFERENCE MONUMENT
- 12. U.E. = UTILITY EASEMENT

OLIVE TREE - PARCEL 5B
P.B. 82, PGS. 47-48