

OLIVE TREE - PARCEL 5A

BEING A REPLAT OF A PORTION OF OLIVE TREE - PHASE 5B
 OF THE RIVER BRIDGE P.U.D., (P.B. 81, PGS. 168 - 169)
 LYING IN THE WEST 1/2 OF SECTION 10, TOWNSHIP 44 SOUTH, RANGE 42 EAST,
 CITY OF GREENACRES, PALM BEACH COUNTY, FLORIDA.
 FEBRUARY 2000 SHEET 2 OF 4

THIS INSTRUMENT WAS PREPARED BY:
 GEORGE D. GIBSON III, P.S.M.

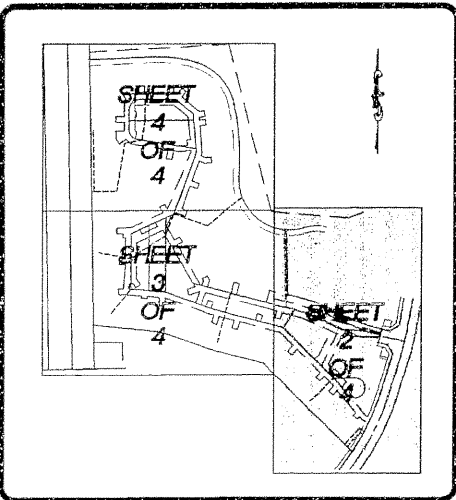


1300 CORPORATE CENTER WAY
 SUITE 201
 WELLINGTON
 FLORIDA 33414
 (561)798-9981
 ENVIRONMENTAL PROFESSIONALS FAX: (561)795-9408

79

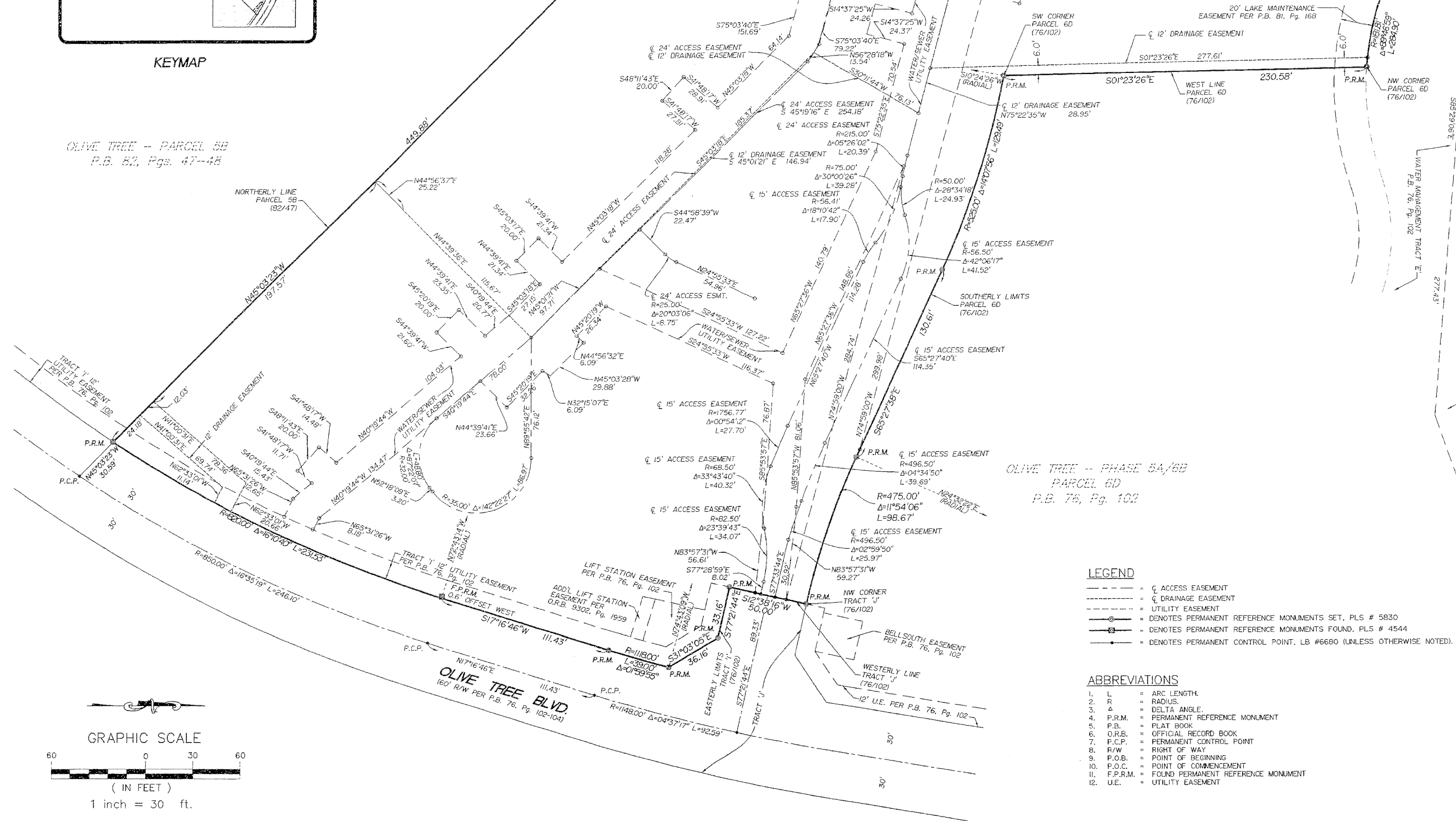
STATE OF FLORIDA
 COUNTY OF WEST PALM BEACH
 THIS PLAT WAS FILED FOR
 AT _____ THIS _____
 DAY OF _____
 AND DULY RECORDED IN
 _____ PAGES _____

DOROTHY H. WILKEN
 CLERK OF CIRCUIT COURT
 BY _____



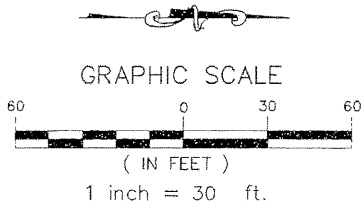
KEYMAP

MATCH LINE SEE SHEET 3 OF 4 FOR CONTINUATION WEST



OLIVE TREE - PARCEL 5B
 P.B. 82, Pgs. 47-48

OLIVE TREE - PHASE 5A/5B
 PARCEL 6D
 P.B. 76, Pg. 102



- LEGEND**
- ACCESS EASEMENT
 - - - DRAINAGE EASEMENT
 - UTILITY EASEMENT
 - ⊙ DENOTES PERMANENT REFERENCE MONUMENTS SET, PLS # 5830
 - ⊙ DENOTES PERMANENT REFERENCE MONUMENTS FOUND, PLS # 4544
 - DENOTES PERMANENT CONTROL POINT, LB #6680 (UNLESS OTHERWISE NOTED).

- ABBREVIATIONS**
- 1. L = ARC LENGTH.
 - 2. R = RADIUS.
 - 3. Δ = DELTA ANGLE.
 - 4. P.R.M. = PERMANENT REFERENCE MONUMENT
 - 5. P.B. = PLAT BOOK
 - 6. O.R.B. = OFFICIAL RECORD BOOK
 - 7. P.C.P. = PERMANENT CONTROL POINT
 - 8. R/W = RIGHT OF WAY
 - 9. P.O.B. = POINT OF BEGINNING
 - 10. P.O.C. = POINT OF COMMENCEMENT
 - 11. F.P.R.M. = FOUND PERMANENT REFERENCE MONUMENT
 - 12. U.E. = UTILITY EASEMENT