

OLIVE TREE - PARCEL 5A

BEING A REPLAT OF A PORTION OF OLIVE TREE - PHASE 5B
 OF THE RIVER BRIDGE P.U.D., (P.B. 81, PGS. 168 - 169)
 LYING IN THE WEST 1/2 OF SECTION 10, TOWNSHIP 44 SOUTH, RANGE 42 EAST,
 CITY OF GREENACRES, PALM BEACH COUNTY, FLORIDA.
 FEBRUARY 2000 SHEET 4 OF 4

THIS INSTRUMENT WAS PREPARED BY:
 GEORGE D. GIBSON II, P.S.M.

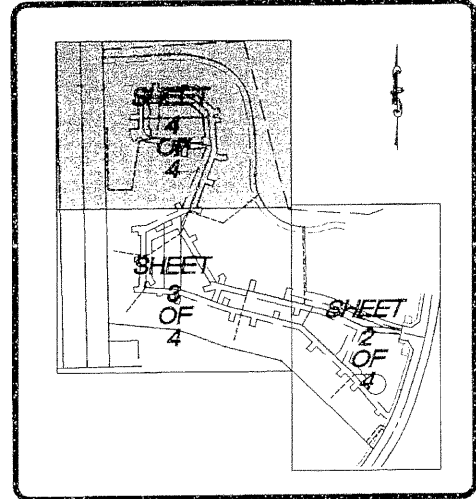


1300 CORPORATE CENTER WAY
 SUITE 201
 WELLINGTON
 FLORIDA 33414
 ENGINEERS - PLANNERS (561)790-9981
 LAND SURVEYORS
 ENVIRONMENTAL PROFESSIONALS FAX: (561)795-9408

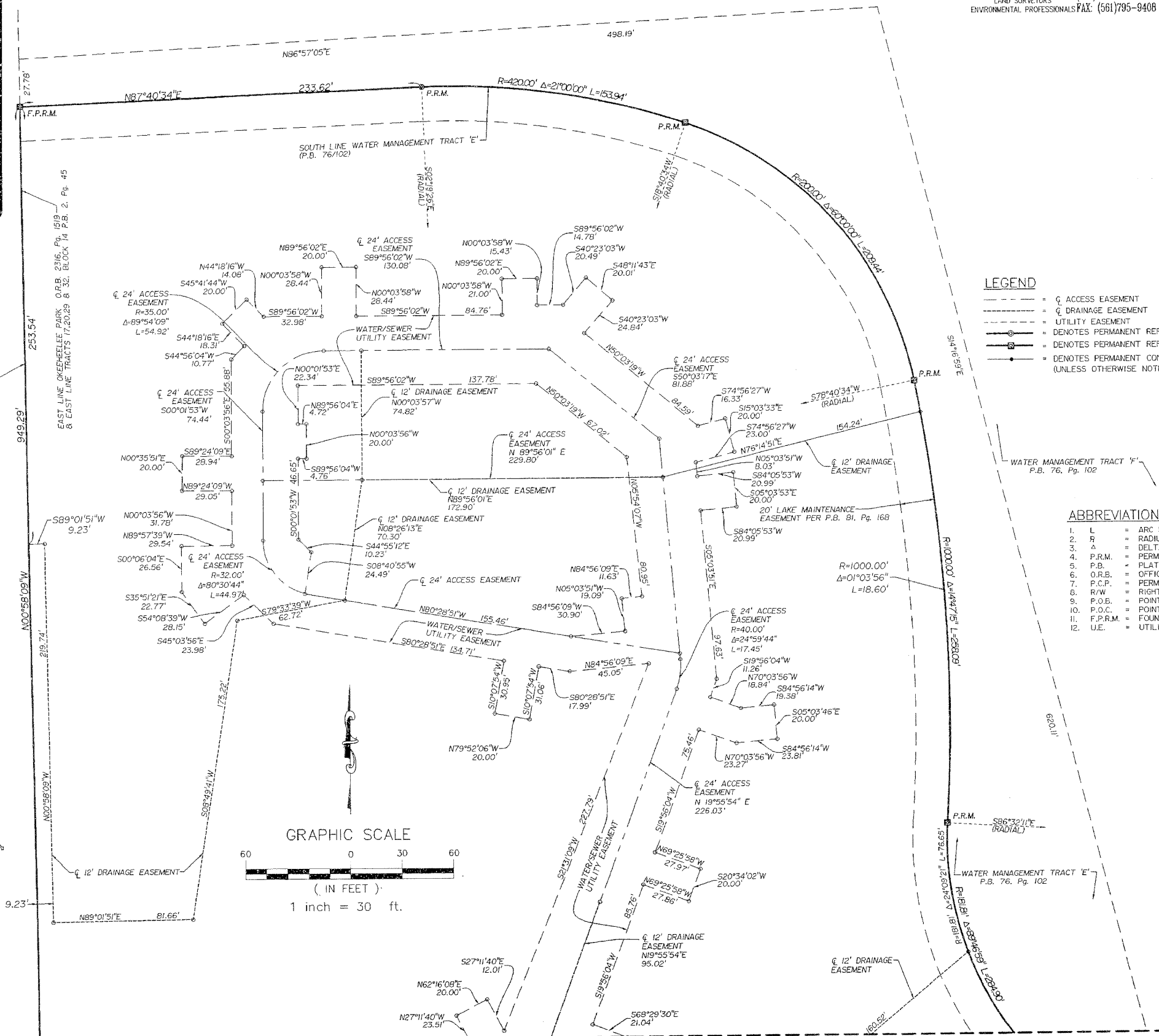
80

STATE OF FLORIDA
 COUNTY OF WEST PALM BEACH
 THIS PLAT WAS FILED FOR RECORD
 AT _____ THIS _____
 DAY OF _____ 2000
 AND DULY RECORDED IN PLAT BOOK
 _____ PAGES _____ THROUGH _____

DOROTHY H. WILKEN
 CLERK OF CIRCUIT COURT
 BY: _____



KEYMAP

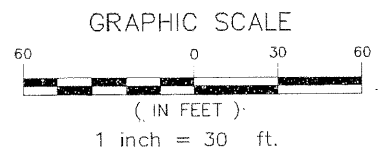


LEGEND

- G ACCESS EASEMENT
- - - DRAINAGE EASEMENT
- - - UTILITY EASEMENT
- DENOTES PERMANENT REFERENCE MONUMENTS SET, PLS # 5830
- DENOTES PERMANENT REFERENCE MONUMENTS FOUND, PLS # 4544
- DENOTES PERMANENT CONTROL POINT, LB #6680 (UNLESS OTHERWISE NOTED).

ABBREVIATIONS

- | | | |
|--------------|---|------------------------------------|
| 1. L | = | ARC LENGTH |
| 2. R | = | RADIUS |
| 3. Δ | = | DELTA ANGLE |
| 4. P.R.M. | = | PERMANENT REFERENCE MONUMENT |
| 5. P.B. | = | PLAT BOOK |
| 6. O.R.B. | = | OFFICIAL RECORD BOOK |
| 7. P.C.P. | = | PERMANENT CONTROL POINT |
| 8. R/W | = | RIGHT OF WAY |
| 9. P.O.B. | = | POINT OF BEGINNING |
| 10. P.O.C. | = | POINT OF COMMENCEMENT |
| 11. F.P.R.M. | = | FOUND PERMANENT REFERENCE MONUMENT |
| 12. U.E. | = | UTILITY EASEMENT |



MATCH LINE SEE SHEET 3 OF 4 FOR CONTINUATION SOUTH