

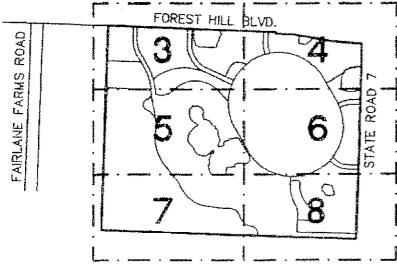
# WELLINGTON GREEN, A MUPD/PUD

A Portion of Section 13, Township 44 South, Range 41 East  
 Village of Wellington, Palm Beach County, Florida

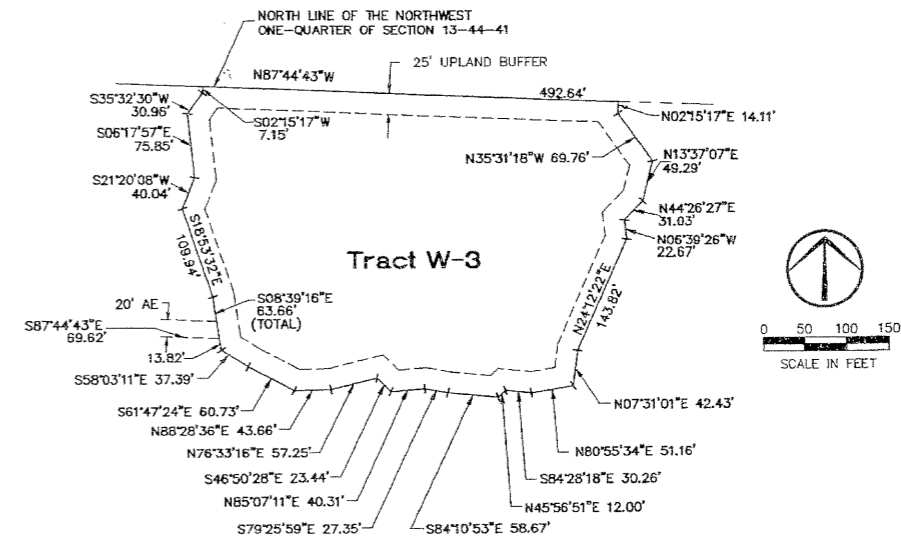
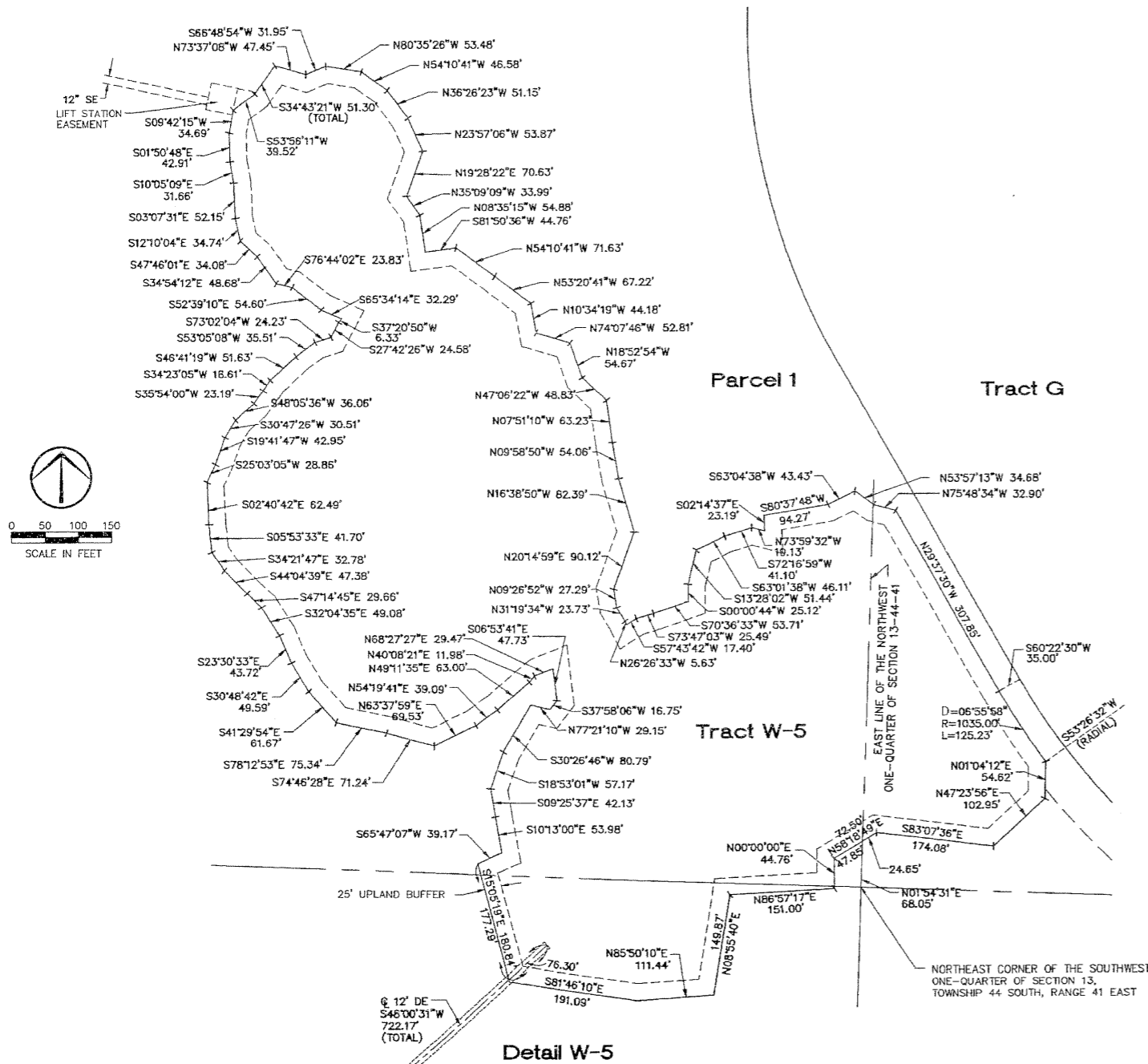
This instrument prepared by James E. Park, P.S.M.  
 Williams, Hatfield & Stoner, Inc. - Engineers Surveyors Planners Environmental Scientists  
 1901 South Congress Avenue, Suite 150, Boynton Beach, Florida 33426

90

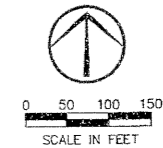
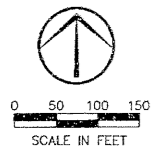
Sheet 10 of 10



LOCATION MAP



Detail W-3



BY: JAMES E. PARK  
 JAMES E. PARK  
 JAMES E. PARK