

# INDIAN SPRING GOLF COURSE

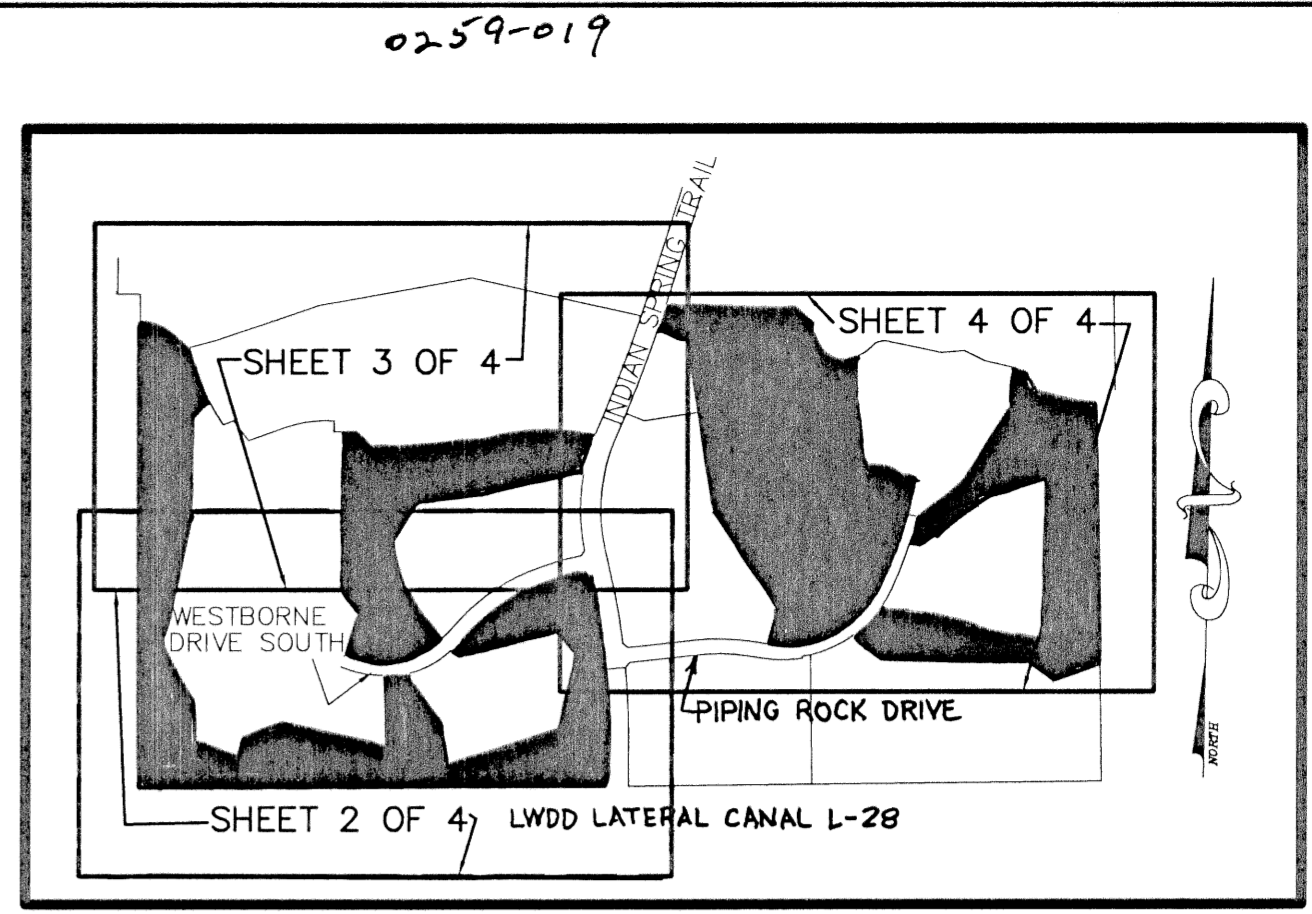
A PART OF INDIAN SPRING, A PLANNED UNIT DEVELOPMENT  
A PORTION OF SECTIONS 34 AND 35, TOWNSHIP 45 SOUTH, RANGE 42 EAST,  
PALM BEACH COUNTY, FLORIDA

**NOTES**  
**COORDINATES, BEARINGS AND DISTANCES**  
COORDINATES SHOWN ARE GRID  
DATUM = NAD 83 1990 ADJUSTMENT  
ZONE = FLORIDA EAST  
LINEAR UNIT = US SURVEY FEET  
COORDINATE SYSTEM 1983 STATE PLANE  
TRANSVERSE MERCATOR PROJECTION  
ALL DISTANCES ARE GROUND  
SCALE FACTOR = 1.0000322  
GROUND DISTANCE X SCALE FACTOR = GRID DISTANCE

THE GEODETIC CONTROL POINTS SHOWN HEREON ARE BASED ON A GPS  
GEODETIC CONTROL SURVEY PREPARED BY ROBIN B. PETZOLD, P.S.M. OF  
LIDBERG LAND SURVEYORS WHICH IS CERTIFIED  
TO A 2 CENTIMETER LOCAL ACCURACY RELATIVE TO THE NEAREST CONTROL  
POINT WITHIN PALM BEACH COUNTY'S GEODETIC CONTROL NETWORK ON THE  
NORTH AMERICAN DATUM OF 1983/90  
THE FOLLOWING STATIONS WERE CONSTRAINED ON THE ABOVE REFERENCED SURVEY

STATION  
INDIAN  
SPILLWAY  
FLIP (WAS FOUND TO BE IN ERROR 0.2" IN AN EAST WEST DIRECTION)  
S00°11'05"W (PLAT BEARING) 00°24'20" = BEARING ROTATION  
N00°13'15"W (GRID BEARING) (PLAT TO GRID)  
WEST LINE THIS PLAT COUNTER CLOCKWISE

THIS INSTRUMENT PREPARED BY  
DAVID P. LINDLEY  
OF  
**CAULFIELD and WHEELER, INC.**  
SURVEYORS - ENGINEERS - PLANNERS  
7301-A WEST PALMETTO PARK ROAD, SUITE 100A  
BOCA RATON, FLORIDA 33433 - (561)392-1991  
SEPTEMBER - 1999

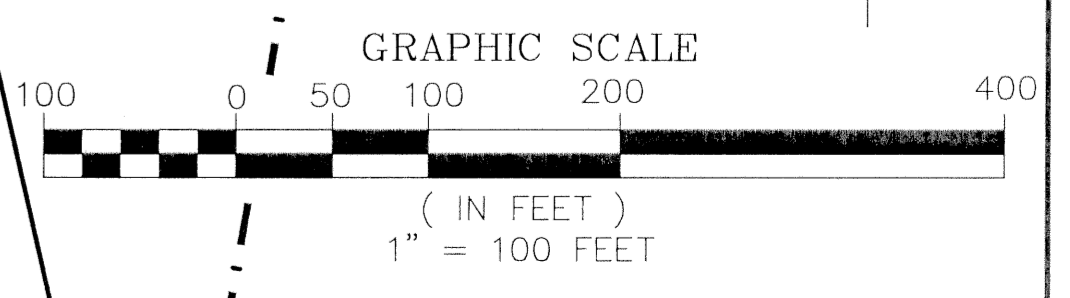
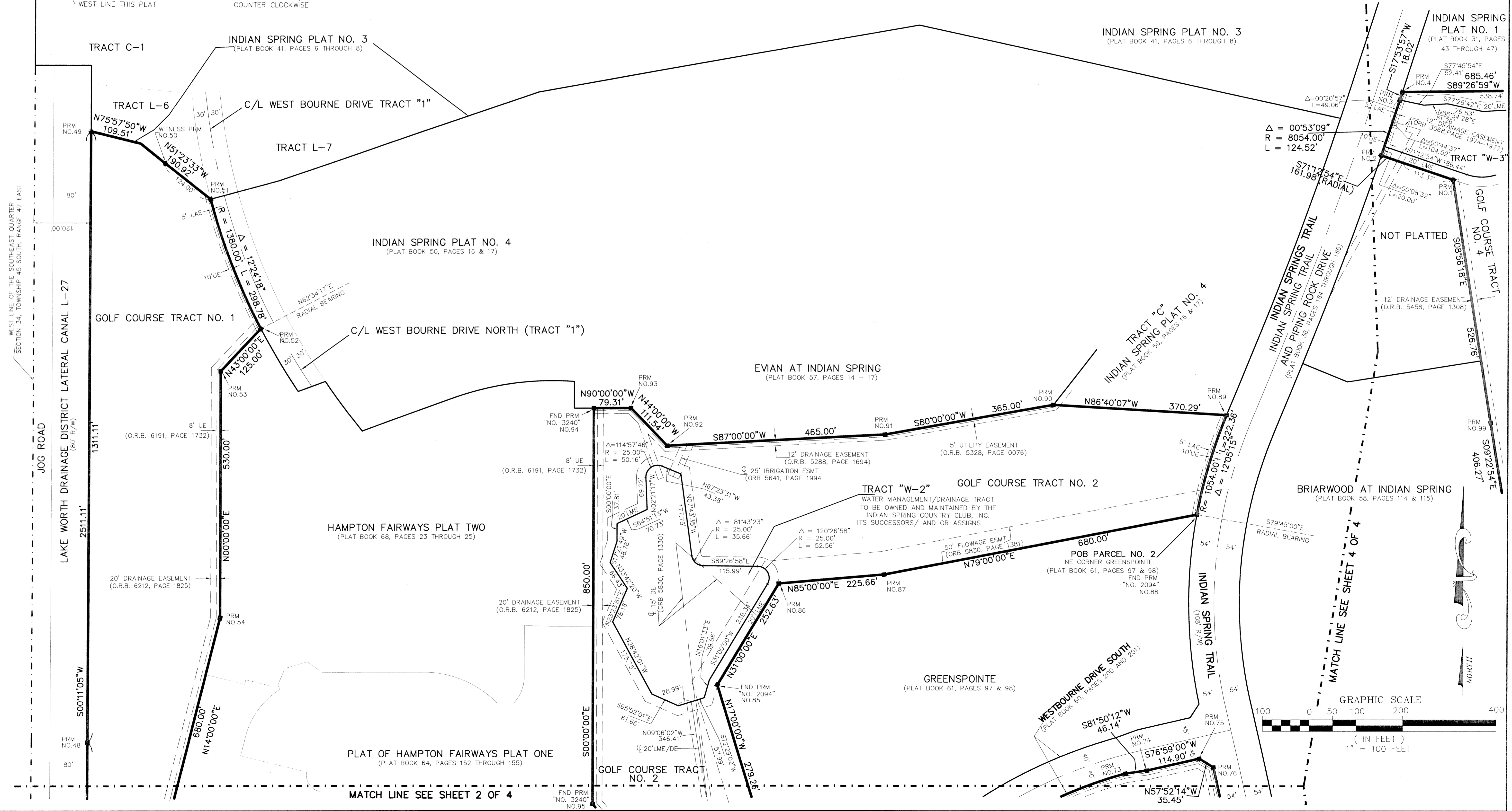


93

STATE OF FLORIDA  
COUNTY OF PALM BEACH  
THIS PLAT WAS FILED FOR  
RECORD AT \_\_\_\_\_ M.  
THIS \_\_\_\_\_ DAY OF \_\_\_\_\_  
A.D. 2000 AND DULY RECORDED  
IN PLAT BOOK \_\_\_\_\_ ON  
PAGES \_\_\_\_\_ AND \_\_\_\_\_  
DOROTHY H. WILKEN  
CLERK CIRCUIT COURT

BY: \_\_\_\_\_  
DEPUTY CLERK

SHEET 3 OF 4



Subdivision Indian Spring Golf Course  
BOOK 93 PAGE 93  
FLOOD MAP NO. 1465  
QUAD # 25 ZONING PUD  
SS 73-52 ZIP CODE 33437  
TAL 453  
PUD NAME Indian Spring

MATCH LINE SEE SHEET 2 OF 4

MATCH LINE SEE SHEET 4 OF 4