

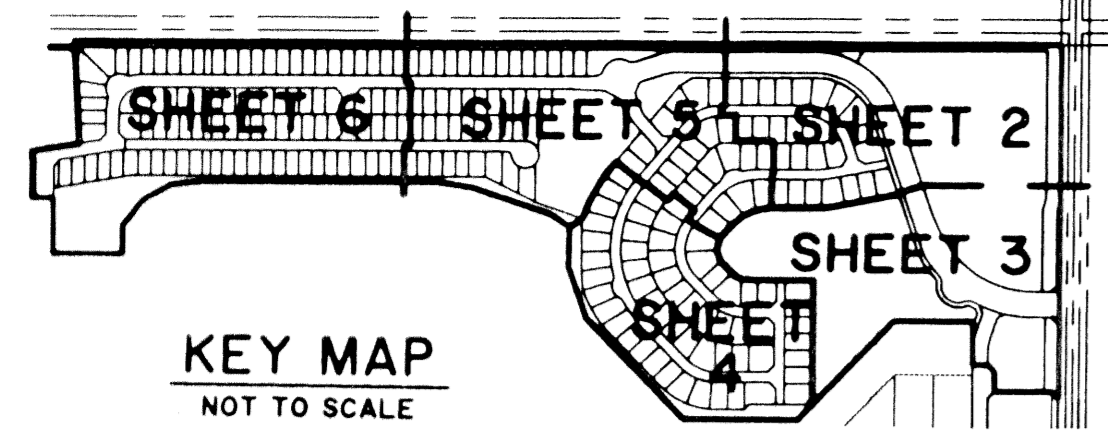
0233-011



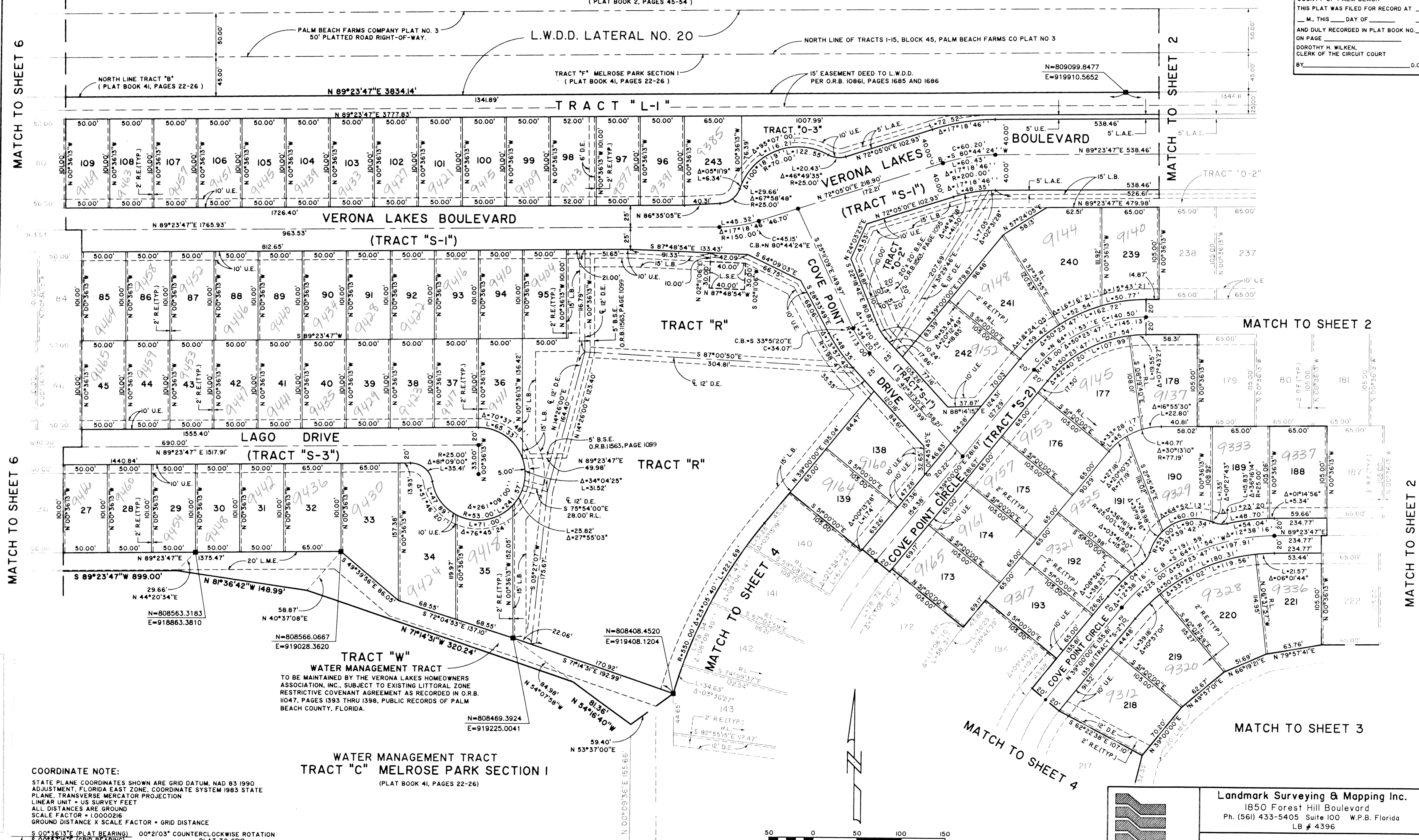
MELROSE P.U.D. (VERONA LAKES)

A PORTION OF A PLANNED UNIT DEVELOPMENT
LYING IN SECTION 18, TOWNSHIP 45 SOUTH, RANGE 42 EAST,
BEING THE REPLAT OF A PORTION OF TRACT "B", MELROSE PARK SECTION I, AS
RECORDED IN PLAT BOOK 41, PAGES 22 THRU 26, PUBLIC RECORDS OF PALM BEACH COUNTY, FLORIDA.
SHEET 5 OF 6

PALM BEACH FARMS COMPANY PLAT NO. 3
(PLAT BOOK 2, PAGES 45-54)



STATE OF FLORIDA SS
COUNTY OF PALM BEACH
THIS PLAT WAS FILED FOR RECORD AT
M, THIS DAY OF
AND DULY RECORDED IN PLAT BOOK NO.
ON PAGE
DOROTHY H. WILKEN,
CLERK OF THE CIRCUIT COURT
BY _____ D.C.



MATCH TO SHEET 6

MATCH TO SHEET 2

MATCH TO SHEET 6

MATCH TO SHEET 2

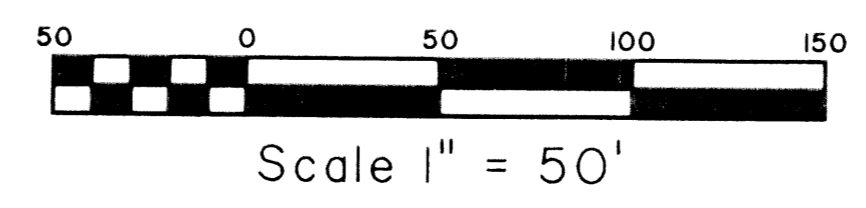
MATCH TO SHEET 4

MATCH TO SHEET 3

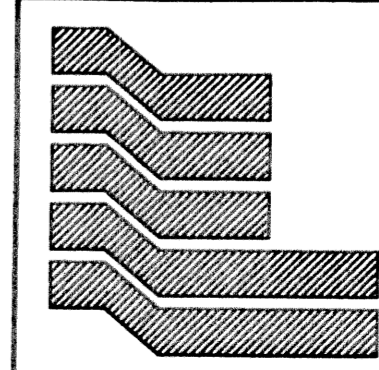
TRACT "W"
WATER MANAGEMENT TRACT
TO BE MAINTAINED BY THE VERONA LAKES HOMEOWNERS
ASSOCIATION, INC., SUBJECT TO EXISTING LITTORAL ZONE
RESTRICTIVE COVENANT AGREEMENT AS RECORDED IN O.R.B.
1047, PAGES 1393 THRU 1398, PUBLIC RECORDS OF PALM
BEACH COUNTY, FLORIDA.

TRACT "C" MELROSE PARK SECTION I
(PLAT BOOK 41, PAGES 22-26)

COORDINATE NOTE:
STATE PLANE COORDINATES SHOWN ARE GRID DATUM, NAD 83 1990
ADJUSTMENT, FLORIDA EAST ZONE, COORDINATE SYSTEM 1983 STATE
PLANE, TRANSVERSE MERCATOR PROJECTION
LINEAR UNIT = US SURVEY FEET
ALL DISTANCES ARE GROUND
SCALE FACTOR = 1.0000216
GROUND DISTANCE X SCALE FACTOR = GRID DISTANCE
S 00°36'13"E (PLAT BEARING) 00°21'03" COUNTERCLOCKWISE ROTATION
S 00°37'16"E (GRID BEARING) PLAT TO GRID
THE WEST RIGHT-OF-WAY LINE OF LYONS ROAD



Scale 1" = 50'



Landmark Surveying & Mapping Inc.
1850 Forest Hill Boulevard
Ph. (561) 433-5405 Suite 100 W.P.B. Florida
LB # 4396

MELROSE P.U.D. (VERONA LAKES)

87
49
1927
NOT TO SCALE