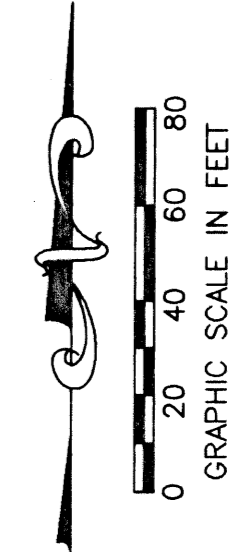


# JOURNEY'S END PLAT THREE

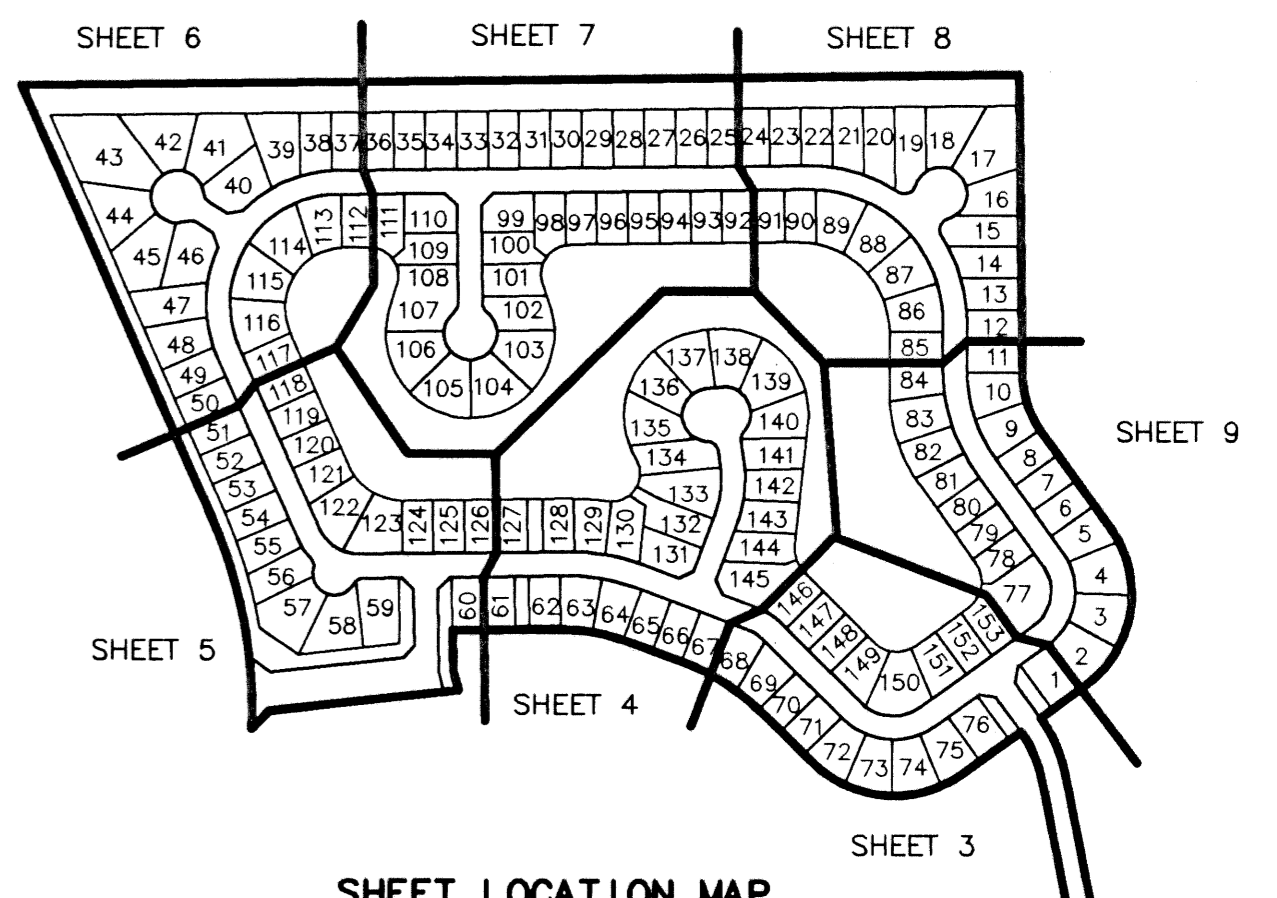
PART OF SMITH DAIRY EAST P.U.D.  
 SITUATE IN SECTIONS 3 AND 4, TOWNSHIP 45 SOUTH, RANGE 42 EAST,  
 BEING A REPLAT OF A PORTION OF BLOCKS 38 AND 39,  
 AND THE 50' RIGHT OF WAY, AS SHOWN ON THE PLAT OF  
 PALM BEACH FARMS COMPANY, PLAT NO. 3, PB 2, PGS 45 - 54,  
 PALM BEACH COUNTY, FLORIDA  
 MAY, 1999 SHEET 5 OF 9

123

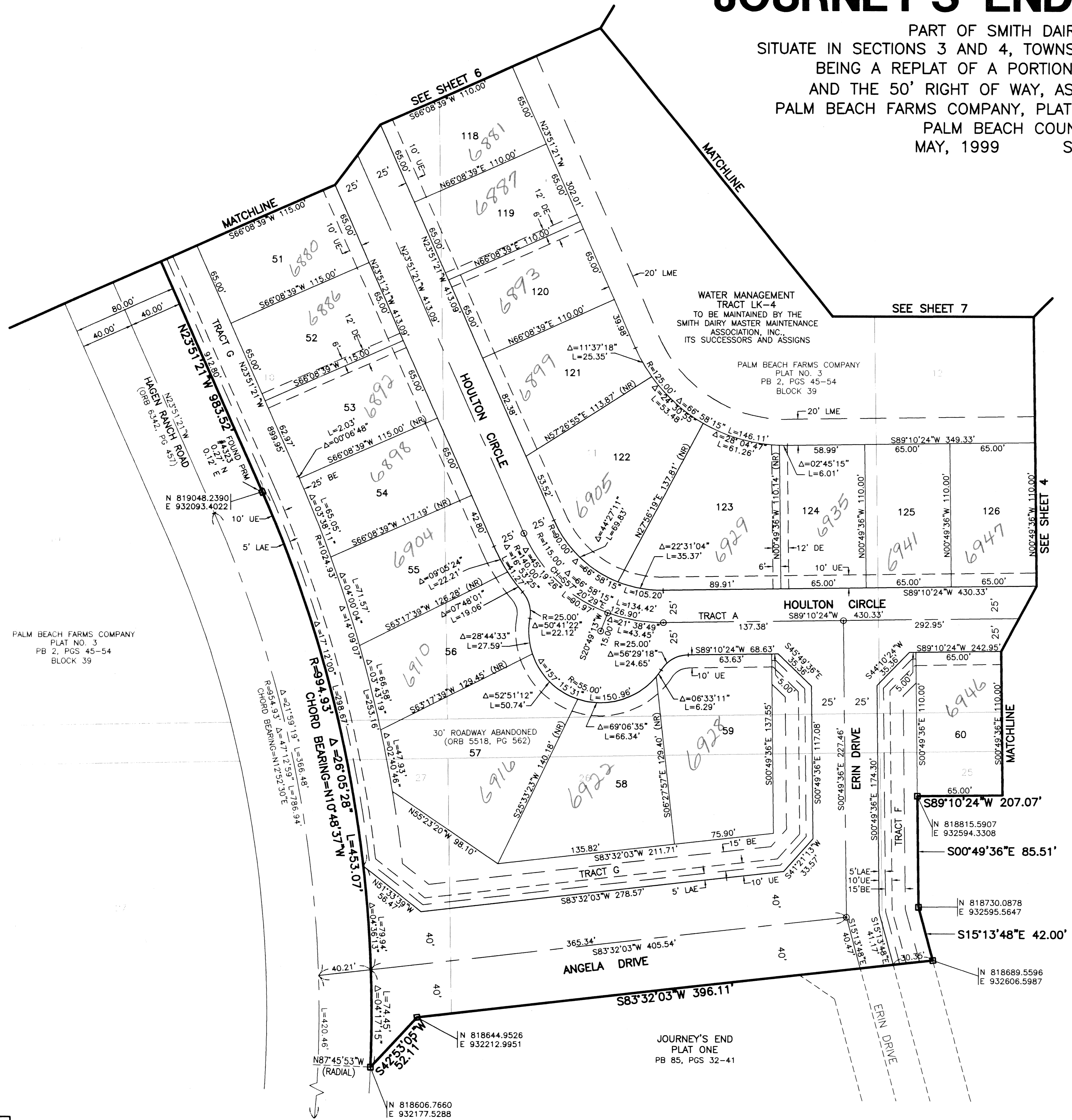
STATE OF FLORIDA  
 COUNTY OF PALM BEACH  
 THIS PLAT WAS FILED FOR  
 RECORD \_\_\_\_\_ DAY OF \_\_\_\_\_  
 AD, 2000 AND DULY RECORDED  
 IN PLAT BOOK \_\_\_\_\_ ON PAGES  
 \_\_\_\_\_ AND \_\_\_\_\_  
 DOROTHY H. WILKEN, CLERK  
 BY: \_\_\_\_\_, D.C.



CIRCUIT COURT SEAL



SHEET LOCATION MAP  
 (NOT TO SCALE)



- LEGEND**
- L ARC LENGTH
  - AE ACCESS EASEMENT
  - BE BUFFER EASEMENT
  - Δ CENTRAL (DELTA) ANGLE
  - CH CHORD
  - DE DRAINAGE EASEMENT
  - LAE LIMITED ACCESS EASEMENT
  - LME LAKE MAINTENANCE EASEMENT
  - LMAE LAKE MAINTENANCE ACCESS EASEMENT
  - PUD PLANNED UNIT OF DEVELOPMENT
  - (NR) NON-RADIAL
  - ORB OFFICIAL RECORD BOOK
  - PB PLAT BOOK
  - PG(S) PAGE(S)
  - R RADIUS
  - (TYP) TYPICAL
  - UE UTILITY EASEMENT
  - PERMANENT REFERENCE MONUMENT
  - FOUND LB-048 (OR SEE NOTE)
  - PERMANENT REFERENCE MONUMENT
  - SET LB-048
  - ⊙ PERMANENT CONTROL POINT
  - ⊘ SET LB-048
  - ⊖ CENTERLINE

THIS INSTRUMENT WAS PREPARED BY DAVID L. SMITH, P.S.M. IN THE OFFICES OF MOCK, ROOS & ASSOCIATES, INC., 5720 CORPORATE WAY, WEST PALM BEACH, FLORIDA 33407.

SCALE:	1"=40'
P.A. NO.:	98082.72
DATE:	MAY 1999
DRAWING NO.:	45-42-03-79

**MOCK • ROOS**  
 ENGINEERS • SURVEYORS • PLANNERS  
 5720 Corporate Way, West Palm Beach, Florida 33407  
 (561) 683-3113, fax 478-7248

JOURNEY'S END PLAT THREE  
 PART OF SMITH DAIRY EAST P.U.D.  
 SITUATE IN SEC 3 AND 4, TWP 45 S, RGE 42 E,  
 BEING A REPLAT OF A PORTION OF BLOCKS 38 AND 39,  
 AND THE 50' RIGHT OF WAY AS SHOWN ON THE PLAT OF  
 PALM BEACH FARMS COMPANY, PLAT NO. 3, PB 2, PGS 45-54,  
 PALM BEACH COUNTY, FLORIDA

SHEET 5 OF 9

JOURNEY'S END  
 PAGE 123  
 FLOOD MAP # 1756  
 ZONING # 3342  
 ZIP CODE 33420  
 87  
 464  
 743  
 TAZ  
 PUD NAME

REV.: 7-22-99  
 CAD FILE:  
 WESTSM\_B/SM\_BR04