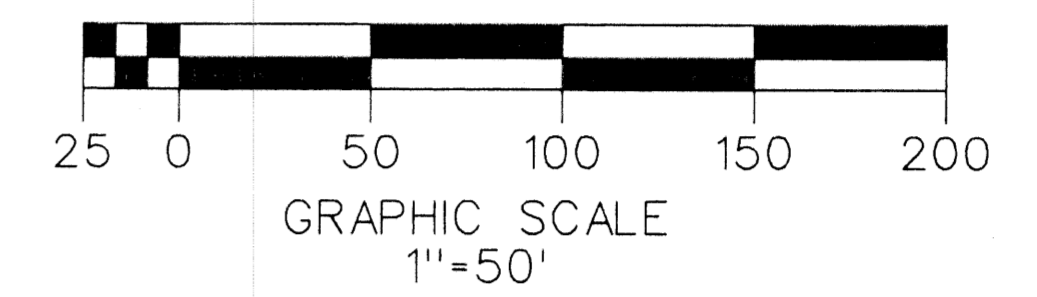
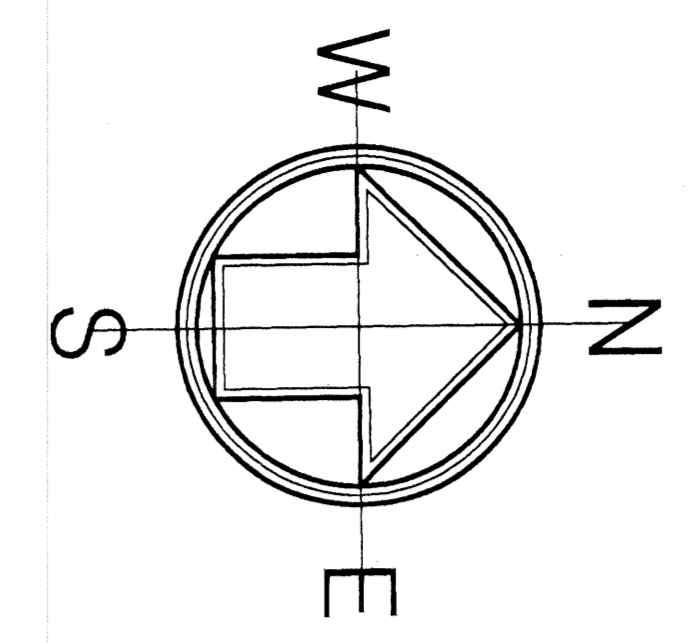


SUMMIT LAKE A P.U.D.

SECTION 1, TOWNSHIP 44 SOUTH, RANGE 42 EAST PALM BEACH COUNTY, FLORIDA

THIS INSTRUMENT PREPARED BY SCOTT A. GUZZI
SCOTT A. GUZZI AND ASSOCIATES, INC. - SURVEYORS AND MAPPERS
6047 KIMBERLY BOULEVARD, SUITE T, NORTH LAUDERDALE, FLORIDA, 33068



SHEET 2 OF 2

S.W. CORNER
SECT. 1-44-42
PALM BEACH COUNTY
BRASS DISK IN CONC. FD.
N-847601.419
E-943294.015

SO. 1/4 CORNER
SECT. 1-44-42
NOT FOUND:
POSITIONED IN ACCORDANCE
WITH FOUND SECTION CORNERS

70' RIGHT-OF-WAY
(O.R.B. 282, PG. 669,
P.B.C.R.)
N-847616.2675
E-946877.0036
B.M. EL. -19.557

N-848869.6692
E-946899.6538

SE 1/4 SECTION 1

SUMMIT (80' WIDE) BOULEVARD

NEPTUNE STREET

SOLAR (40' WIDE) STREET

SKY RANCH
(P.B. 2, PG. 64, P.B.C.R.)

MERCURY STREET

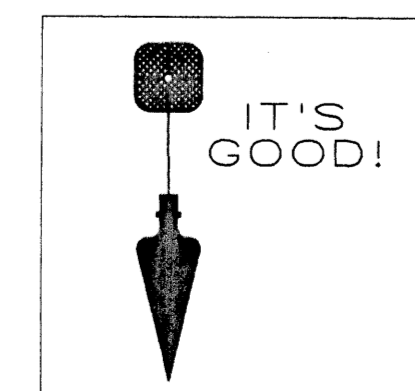
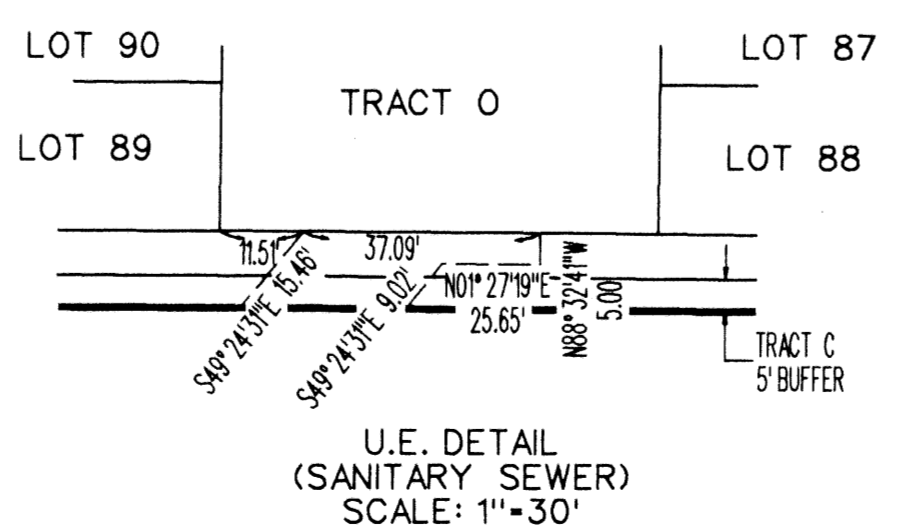
N-848861.4430
E-947332.0016

P.O.B.
N-847608.6204
E-947300.1738
B.M. EL. -19.179

REMAINDER OF SE 1/4 SECTION 1
COTTON BAY RENTAL APARTMENTS

P.O.C.
S.E. CORNER
SECTION 1
PALM BEACH COUNTY
BRASS DISK IN CONC. FD.
N-847504.517
E-948633.224

- ABBREVIATIONS:
- B.M. - BENCHMARK
 - C - CALCULATED
 - D.E. - DRAINAGE EASEMENT
 - E - EASING
 - F.S. - FLORIDA STATUTES
 - INC. - INCORPORATED
 - L.A.E. - LIMITED ACCESS EASEMENT
 - L.M.E. - LAKE MAINTENANCE EASEMENT
 - N - NORTHING
 - P.B. - PLAT BOOK
 - P.B.C.R. - PALM BEACH COUNTY RECORDS
 - P.E. - PEDESTRIAN EASEMENT
 - PG. - PAGE
 - P.O.B. - POINT OF BEGINNING
 - P.O.C. - POINT OF COMMENCEMENT
 - U.E. - UTILITY EASEMENT



SCOTT A. GUZZI & ASSOC., INC.
Surveyors and Mappers
6047 KIMBERLY BOULEVARD
SUITE T
NORTH LAUDERDALE, FLORIDA 33068

SUMMIT LAKE

SECTION Summit Lake
PAGE 131
FLOOD MAP # 100A
ZONING PUD
QUAD # 32
CIB
TIZ 277
PUD NAME