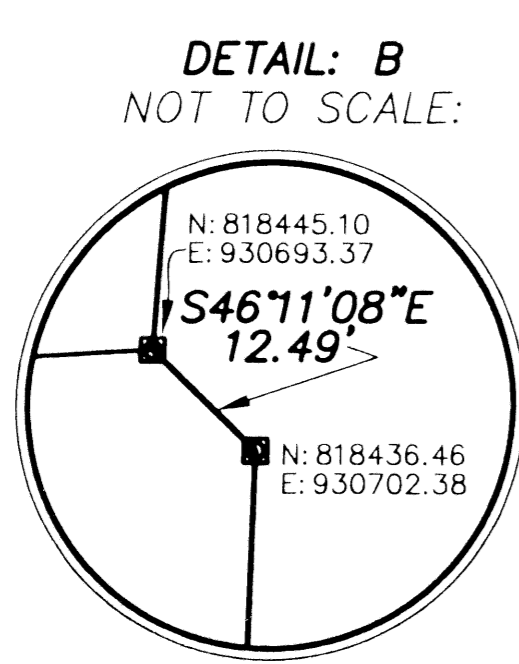
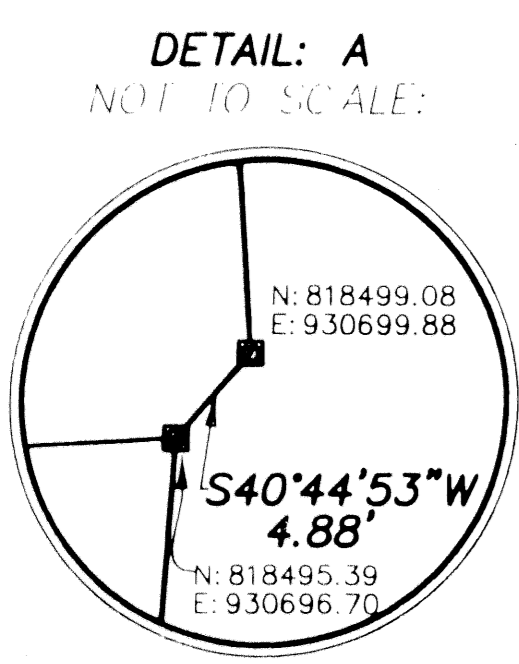
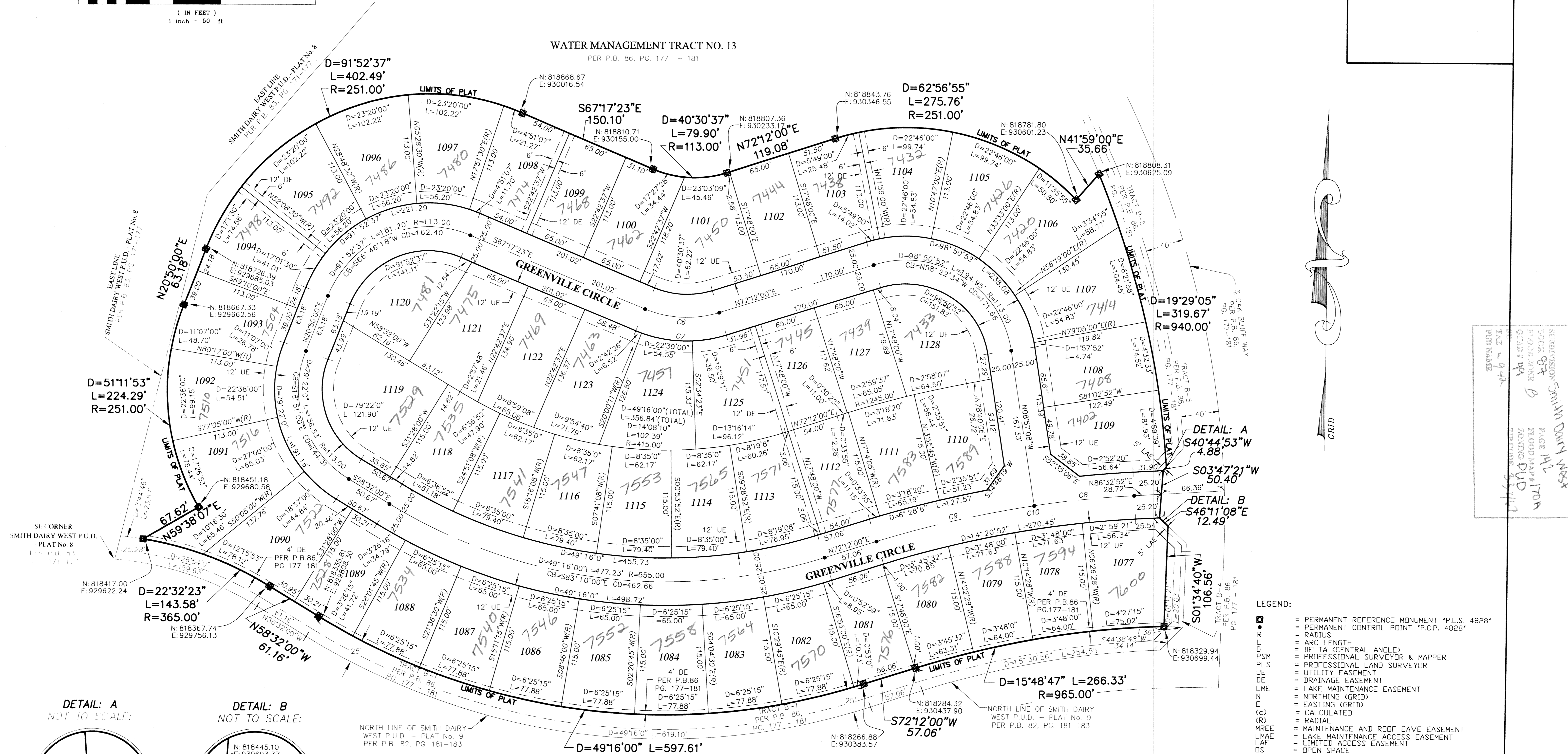
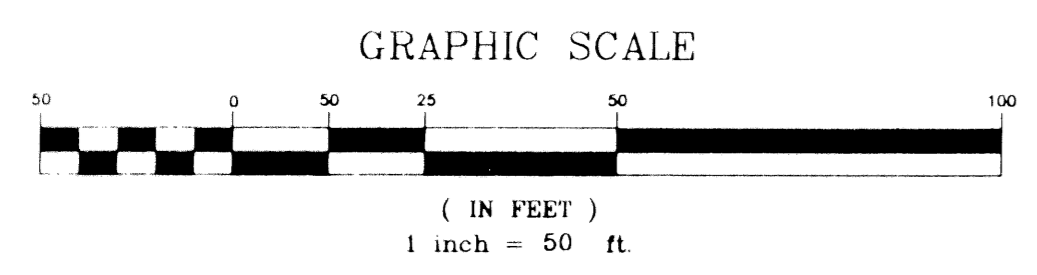


SMITH DAIRY WEST P.U.D.-PLAT No. 10, TRACT "A" REPLAT
 BEING A REPLAT OF TRACT "A" OF SMITH DAIRY WEST P.U.D. - PLAT No. 10 AS RECORDED
 IN PLAT BOOK 86, PAGES 177 THROUGH 181 OF THE PUBLIC RECORDS OF PALM BEACH
 COUNTY, FLORIDA, IN SECTION 4, TOWNSHIP 45 SOUTH, RANGE 42 EAST,
 PALM BEACH COUNTY, FLORIDA
 SHEET 2 OF 2
 AUGUST 1999



CURVE TABLE

CURVE	DELTA	LENGTH	RADIUS	CHORD BEARINGS	CHORD DISTANCE
c6	40°30'37"	79.90'	113.00'	S87°32'42"E	78.24'
c7	40°30'37"	97.57'	138.00'	S87°32'42"E	95.55'
c8	5°30'0"	106.07'	1105.00'	S83°47'52"W	106.03'
c9	8°50'52"	170.64'	1105.00'	S76°37'26"W	170.47'
c10	14°20'52"	276.71'	1105.00'	N79°22'26"E	275.99'

- LEGEND:**
- = PERMANENT REFERENCE MONUMENT "P.L.S. 4828"
 - = PERMANENT CONTROL POINT "P.C.P. 4828"
 - R = RADIUS
 - L = ARC LENGTH
 - Δ = DELTA (CENTRAL ANGLE)
 - PSM = PROFESSIONAL SURVEYOR & MAPPER
 - PLS = PROFESSIONAL LAND SURVEYOR
 - UE = UTILITY EASEMENT
 - DE = DRAINAGE EASEMENT
 - LME = LAKE MAINTENANCE EASEMENT
 - N = NORTHING (GRID)
 - E = EASTING (GRID)
 - (C) = CALCULATED
 - (R) = RADIAL
 - MREE = MAINTENANCE AND ROOF EAVE EASEMENT
 - LMAE = LAKE MAINTENANCE ACCESS EASEMENT
 - LAE = LIMITED ACCESS EASEMENT
 - OS = OPEN SPACE
 - P.O.C. = POINT OF COMMENCEMENT
 - P.O.B. = POINT OF BEGINNING
 - F.P.L. = FLORIDA POWER AND LIGHT
 - P.B. = PLAT BOOK
 - PG. = PAGE

SCALE: 1"=50'
 DATE: AUGUST 1999

NICK MILLER, INC.
 Surveying
 Planning & Development
 Consultants

DRAWN BY:
 CHK:

SMITH DAIRY WEST P.U.D. PLAT No. 10
TRACT "A", REPLAT

2560 RCA Blvd., Suite 105
 Palm Beach Gardens, Florida 33414
 (561) 627-5200
 D.B.P.R. Business License No. 4318

DRAWING NUMBER
94014HA

SMITH DAIRY WEST
 PLAT 10A
 TRACT A
 ZONING PUD
 TRACT 10A
 PLAT 10A
 PUD NAME

33427
 Zoning = PUD/SE