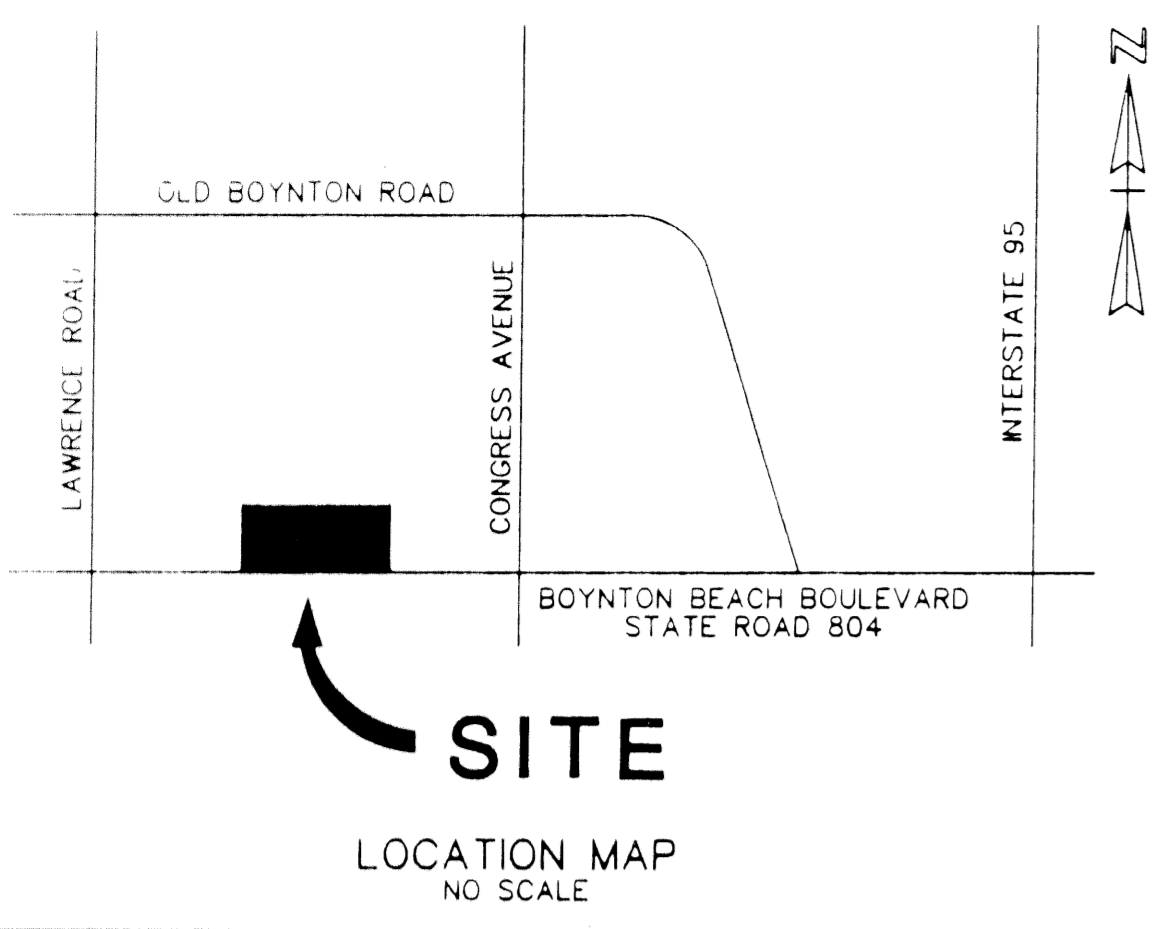


# BOYNTON & LAWRENCE OFFICE M.U.P.D.

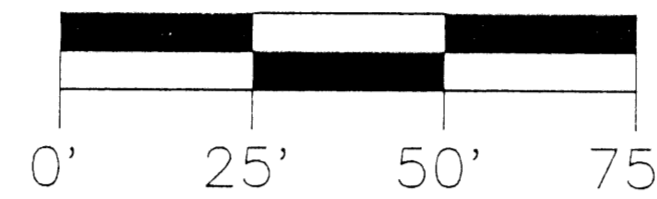
BEING A REPLAT OF A PORTION OF LOTS A AND B, BLOCK 14 AND A PORTION OF LOTS A AND B, BLOCK 15 AND A PORTION OF THE ABANDONED ROAD RIGHT OF WAY LYING BETWEEN LOTS A AND B, BLOCK 14 AND LOTS A AND B, BLOCK 15, PALM BEACH FARMS COMPANY PLAT NO.8 OF SECTION 30, TOWNSHIP 45 SOUTH, RANGE 43 EAST, RECORDED IN PLAT BOOK 5, PAGE 73, PUBLIC RECORDS OF PALM BEACH COUNTY, FLORIDA.

1000-696

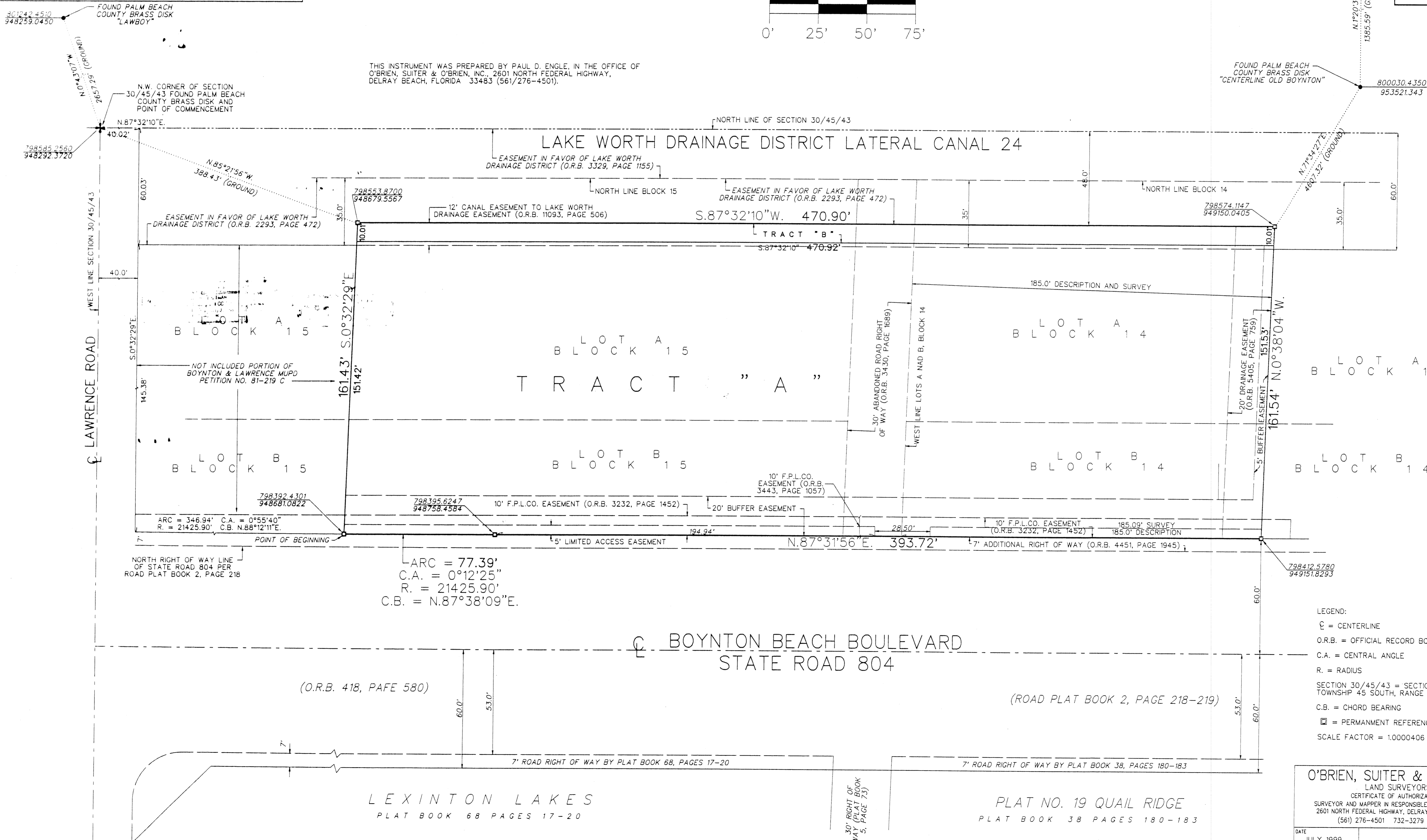


SHEET 2 OF 2

SCALE: 1" = 25'



THIS INSTRUMENT WAS PREPARED BY PAUL D. ENGLE, IN THE OFFICE OF O'BRIEN, SUITER & O'BRIEN, INC., 2601 NORTH FEDERAL HIGHWAY, DELRAY BEACH, FLORIDA 33483 (561/276-4501).



FOUND PALM BEACH COUNTY BRASS DISK "MUDD"  
801415.7000  
953553.847

FOUND PALM BEACH COUNTY BRASS DISK "CENTERLINE OLD BOYNTON"  
800030.4350  
953521.343

- LEGEND:
- ⊕ = CENTERLINE
  - O.R.B. = OFFICIAL RECORD BOOK
  - C.A. = CENTRAL ANGLE
  - R. = RADIUS
  - SECTION 30/45/43 = SECTION 30, TOWNSHIP 45 SOUTH, RANGE 43 EAST
  - C.B. = CHORD BEARING
  - ⊠ = PERMANENT REFERENCE MONUMENT (P.R.M.)
  - SCALE FACTOR = 1.0000406

STATIONARY BOYNTON & LAWRENCE OFFICE  
BOOK 87  
FLOOD ZONE 5  
QUAIL #19  
ZONING RS-100  
ZIR CODE 33435

O'BRIEN, SUITER & O'BRIEN, INC.  
LAND SURVEYORS

CERTIFICATE OF AUTHORIZATION #B353  
SURVEYOR AND MAPPER IN RESPONSIBLE CHARGE: JOHN N. SUITER  
2601 NORTH FEDERAL HIGHWAY, DELRAY BEACH, FLORIDA 33483  
(561) 276-4501 732-3279 FAX 276-2390

DATE	JULY 1999	SCALE:
FELD BOOK	B135	ORDER NO:
PAGE NO.	79	83-484"PL"

Taz = 487