

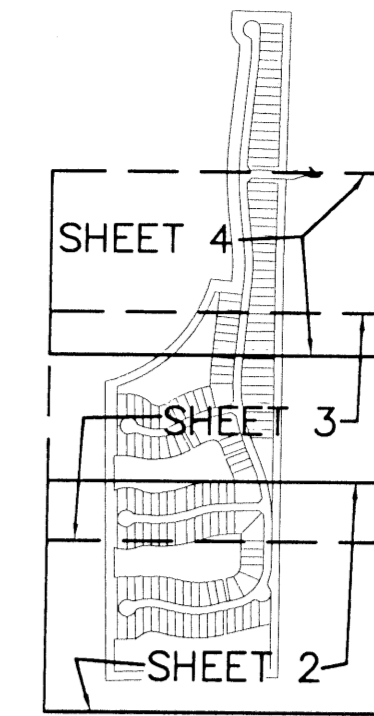
# WYCLIFFE TRACT "N" REPLAT

0520-027

A PLANNED UNIT DEVELOPMENT BEING A PART OF WYCLIFFE GOLF AND COUNTRY CLUB (FORMERLY KNOWN AS SUNDIAL COUNTRY CLUB), AND BEING A REPLAT OF A PORTION OF WYCLIFFE TRACT "N", AS RECORDED IN PLAT BOOK 84, PAGES 59 THROUGH 64 OF THE PUBLIC RECORDS OF PALM BEACH COUNTY, FLORIDA, LYING IN SECTIONS 24 AND 25, TOWNSHIP 44 SOUTH, RANGE 41 EAST, PALM BEACH COUNTY, FLORIDA

THIS INSTRUMENT PREPARED BY  
DAVID P. LINDLEY  
OF  
**CAULFIELD and WHEELER, INC.**  
SURVEYORS - ENGINEERS - PLANNERS  
7301-A WEST PALMETTO PARK ROAD, SUITE 100A  
BOCA RATON, FLORIDA 33433 - (561)392-1991  
SEPTEMBER - 1999

# 156



STATE OF FLORIDA  
COUNTY OF PALM BEACH  
RECORD AT \_\_\_\_\_ M.  
THIS \_\_\_\_\_ DAY OF \_\_\_\_\_  
A.D. 2000 AND DULY RECORDED IN  
PLAT BOOK \_\_\_\_\_ ON  
PAGES \_\_\_\_\_ AND \_\_\_\_\_  
DOROTHY H. WILKEN  
CLERK CIRCUIT COURT

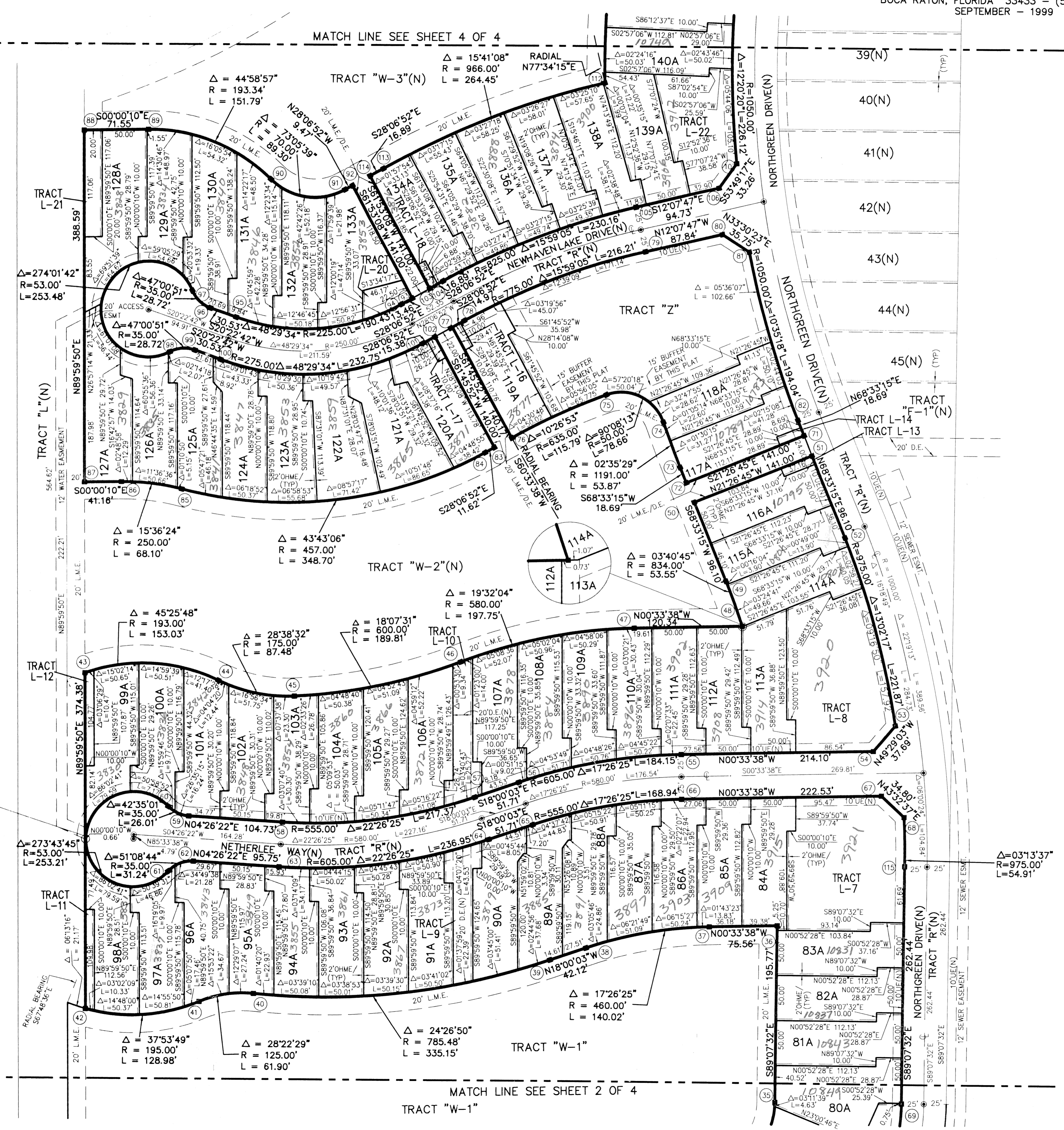
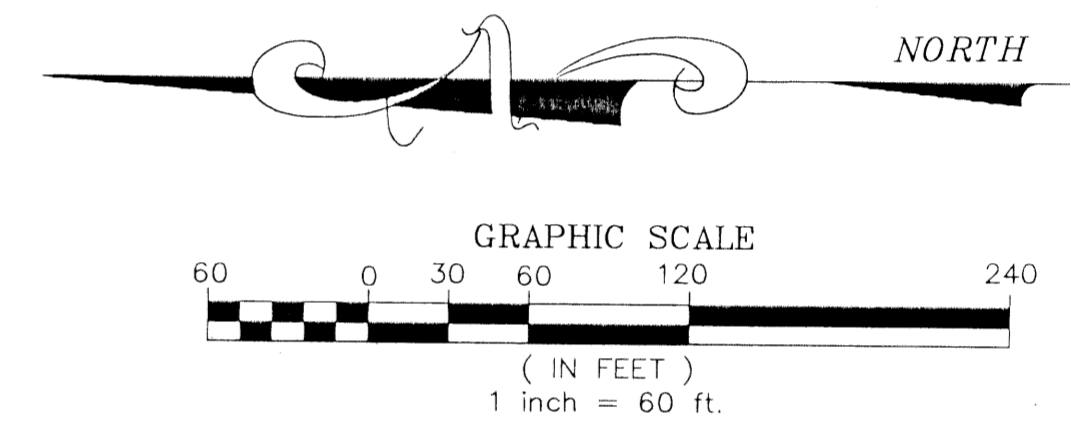
BY: \_\_\_\_\_  
DEPUTY CLERK

KEY MAP N.T.S.

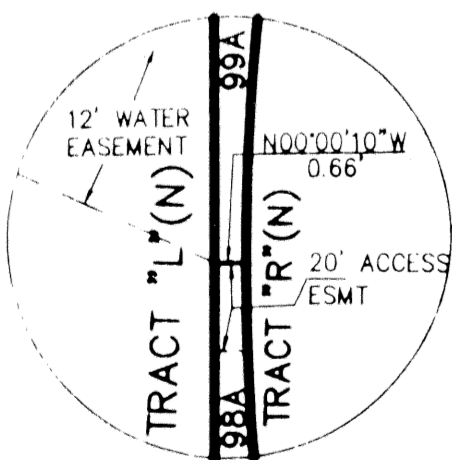
SHEET 3 OF 4

### NOTES COORDINATES, BEARINGS AND DISTANCES

COORDINATES SHOWN ARE GRID  
DATUM = NAD 83 1990 ADJUSTMENT  
ZONE = FLORIDA EAST  
LINEAR UNIT = US SURVEY FEET  
COORDINATE SYSTEM 1983 STATE PLANE  
TRANSVERSE MERCATOR PROJECTION  
ALL DISTANCES ARE GROUND  
SCALE FACTOR = 1.0000165  
GROUND DISTANCE X SCALE FACTOR = GRID DISTANCE  
BEARINGS = GRID



ACREAGE



SECTION 24  
PAGE 156  
FLOOD MAP # 100A  
ZONING RS  
ZIP CODE 33407  
SUBDIVISION WYCLIFFE TRACT "N"  
PLAT # 84  
DATE 08/19/99  
BY DPL  
PUD NAME

MATCH LINE SEE SHEET 2 OF 4  
TRACT "W-1"

MATCH LINE SEE SHEET 4 OF 4