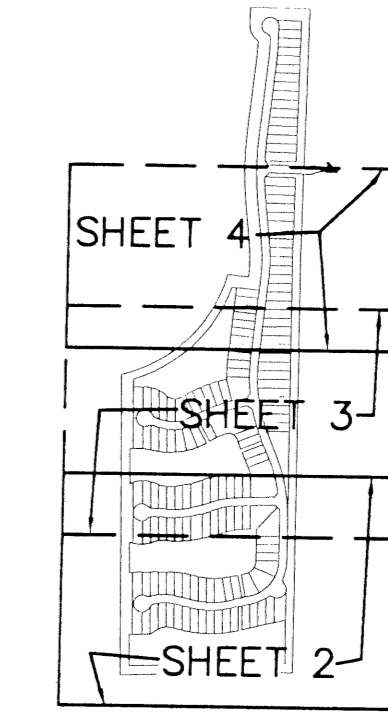


WYCLIFFE TRACT "N" REPLAT

0520-027

A PLANNED UNIT DEVELOPMENT BEING A PART OF WYCLIFFE GOLF AND COUNTRY CLUB (FORMERLY KNOWN AS SUNDIAL COUNTRY CLUB), AND BEING A REPLAT OF A PORTION OF WYCLIFFE TRACT "N", AS RECORDED IN PLAT BOOK 84, PAGES 59 THROUGH 64 OF THE PUBLIC RECORDS OF PALM BEACH COUNTY, FLORIDA, LYING IN SECTIONS 24 AND 25, TOWNSHIP 44 SOUTH, RANGE 41 EAST, PALM BEACH COUNTY, FLORIDA

THIS INSTRUMENT PREPARED BY
DAVID P. LINDLEY
OF
CAULFIELD and WHEELER, INC.
SURVEYORS - ENGINEERS - PLANNERS
7301-A WEST PALMETTO PARK ROAD, SUITE 100A
BOCA RATON, FLORIDA 33433 - (561)392-1991
SEPTEMBER - 1999



157

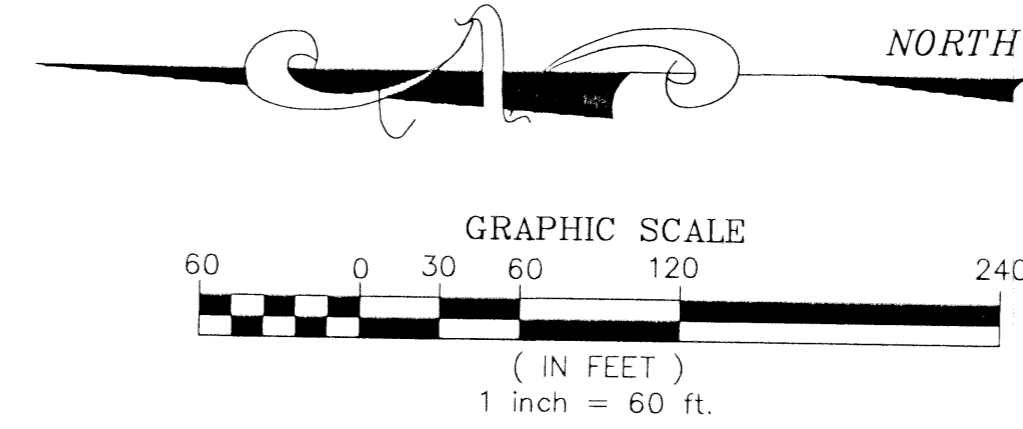
STATE OF FLORIDA
COUNTY OF PALM BEACH
THIS PLAT WAS FILED FOR
RECORD AT _____ M.
THIS _____ DAY OF _____
A.D. 2000 AND DULY RECORDED
IN PLAT BOOK _____ ON
PAGES _____ AND _____

DOROTHY H. WILKEN
CLERK CIRCUIT COURT

BY: _____
DEPUTY CLERK

KEY MAP N.T.S.

SHEET 4 OF 4

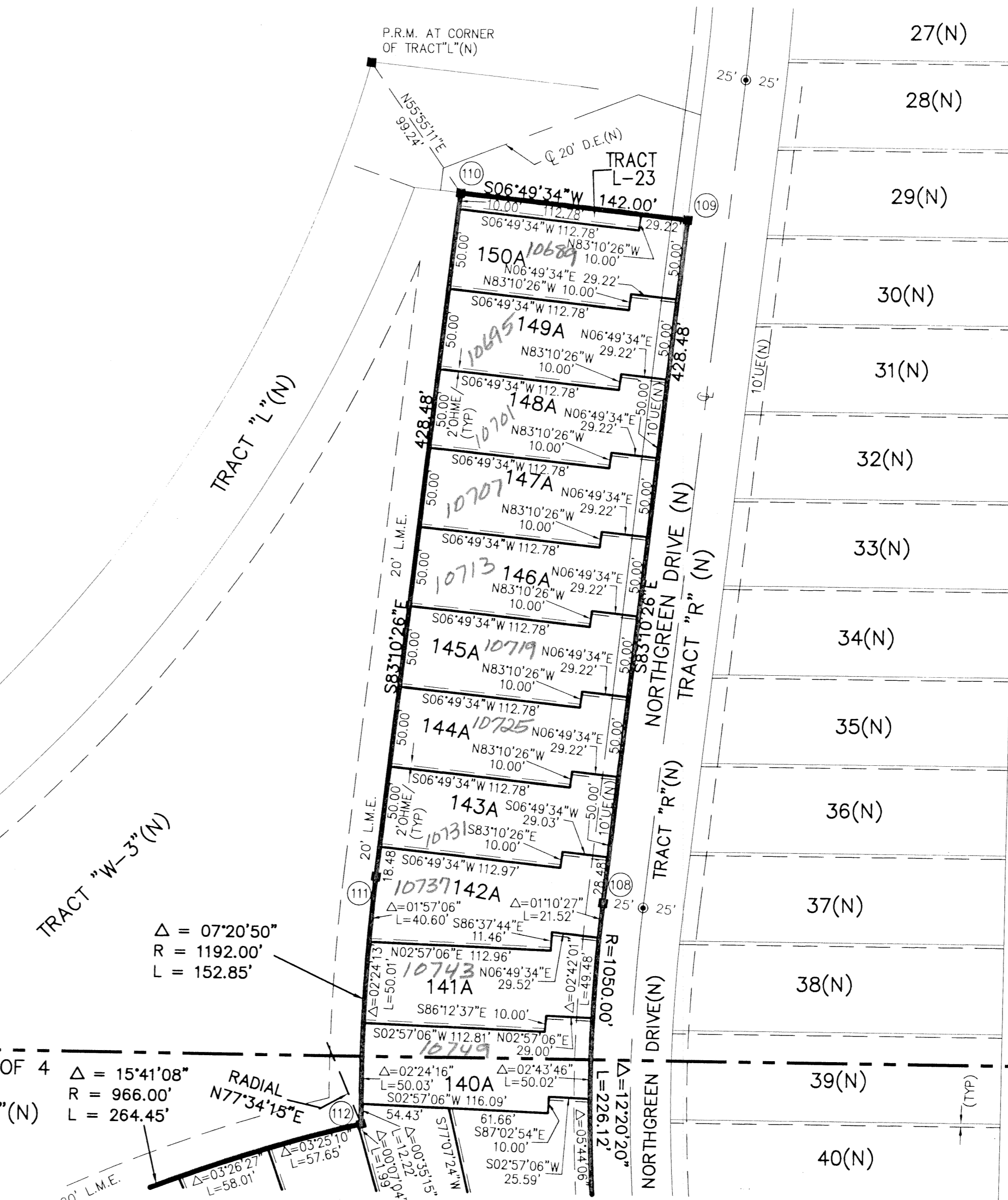


P.R.M.#	NORTHING	EASTING	P.R.M.#	NORTHING	EASTING	P.R.M.#	NORTHING	EASTING	P.R.M.#	NORTHING	EASTING
1	832300.948	911221.285	31	832594.659	911307.844	61	833162.454	911856.001	91	832964.033	912613.193
2	832572.652	911161.705	32	832552.195	911368.345	62	833134.270	911866.895	92	832955.675	912617.659
3	832572.664	911312.668	33	832577.427	911508.188	63	833038.806	911859.483	93	832889.239	912493.289
4	832511.376	911326.107	34	832551.498	911513.874	64	832805.014	911887.281	94	832901.115	912486.944
5	832414.498	911368.104	35	832486.286	911593.682	65	832755.832	911903.262	95	833085.492	912474.478
6	832377.239	911369.611	36	832483.297	911789.434	66	832589.750	911930.402	96	833114.113	912485.110
7	832298.055	911410.814	37	832558.855	911788.695	67	832367.231	911932.579	97	833134.236	912504.465
8	832594.652	911156.908	38	832696.507	911766.201	68	832342.007	911908.605	98	833159.402	912436.715
9	832923.848	911158.401	39	832736.567	911753.184	69	832345.294	911592.046	99	833131.524	912438.238
10	833020.784	911181.464	40	833067.493	911719.704	70	832522.095	911374.946	100	833102.911	912427.610
11	833099.188	911167.524	41	833128.209	911711.451	71	832452.600	912336.857	101	832877.546	912442.847
12	833144.651	911137.381	42	833254.677	911704.868	72	832583.838	912285.304	102	832863.974	912450.098
13	833254.651	911137.376	43	833254.695	912079.255	73	832560.673	912302.704	103	832869.827	912503.661
14	833254.669	911522.872	44	833105.997	912068.967	74	832609.228	912353.271	104	832854.949	912511.610
15	833006.705	911525.297	45	833021.426	912050.448	75	832672.816	912384.392	105	832639.513	912590.543
16	832944.278	911518.319	46	832835.902	912086.619	76	832778.274	912336.962	106	832546.907	912610.447
17	832858.771	911498.081	47	832642.295	912121.900	77	832844.569	912460.466	107	832527.276	912637.291
18	832632.069	911496.206	48	832521.961	912123.077	78	832831.377	912467.514	108	832524.689	912662.964
19	832598.931	911503.473	49	832539.932	912173.528	79	832629.018	912541.656	109	832473.760	913288.416
20	832573.700	911363.629	50	832575.062	912262.961	80	832543.142	912560.113	110	832614.754	913305.294
21	832654.102	911345.998	51	832443.824	912314.514	81	832513.337	912540.380	111	832665.682	912879.842
22	832866.108	911347.947	52	832408.690	912225.071	82	832459.434	912354.253	112	832674.083	912727.322
23	832983.190	911375.888	53	832351.664	912011.149	83	832797.740	912326.755	113	832921.383	912635.980
24	833143.026	911373.615	54	832376.151	911982.495	84	832807.998	912321.274	114	832936.271	912628.026
25	833169.036	911376.777	55	832590.239	911980.400	85	833146.288	912284.190			
26	833146.663	911307.903	56	832771.291	911950.813	86	833213.547	912293.404			
27	833123.183	911327.080	57	832820.465	911934.835	87	833254.704	912293.402			
28	832994.796	911327.253	58	833034.943	911909.335	88	833254.723	912681.996			
29	832877.714	911299.312	59	833139.356	911917.441	89	833183.174	912681.999			
30	832644.658	911296.882	60	833162.254	911928.477	90	833046.500	912625.419			

NOTES COORDINATES, BEARINGS AND DISTANCES

COORDINATES SHOWN ARE GRID
DATUM = NAD 83 1990 ADJUSTMENT
ZONE = FLORIDA EAST
LINEAR UNIT = US SURVEY FEET
COORDINATE SYSTEM 1983 STATE PLANE
TRANSVERSE MERCATOR PROJECTION

ALL DISTANCES ARE GROUND
SCALE FACTOR = 1.0000165
GROUND DISTANCE X SCALE FACTOR = GRID DISTANCE
BEARINGS = GRID



SUBDIVISION Wycliffe Tract "N"
BOOK 87
PAGE 157
FLOOD ZONE 6
QUAD # 63
ZONING PS
ZIP CODE 33467
TAX 737
PUD NAME