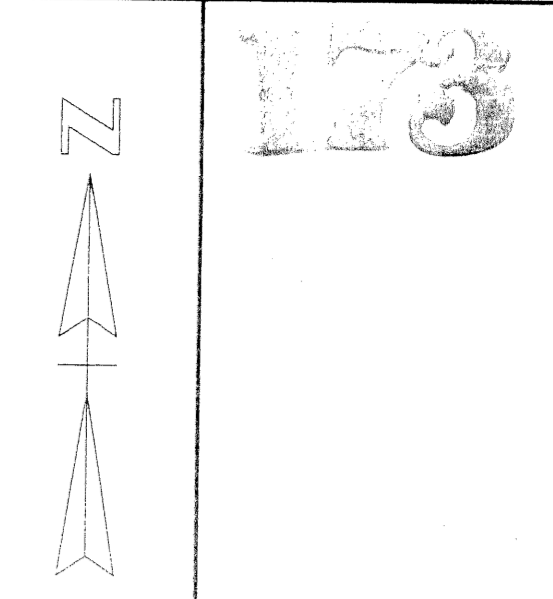
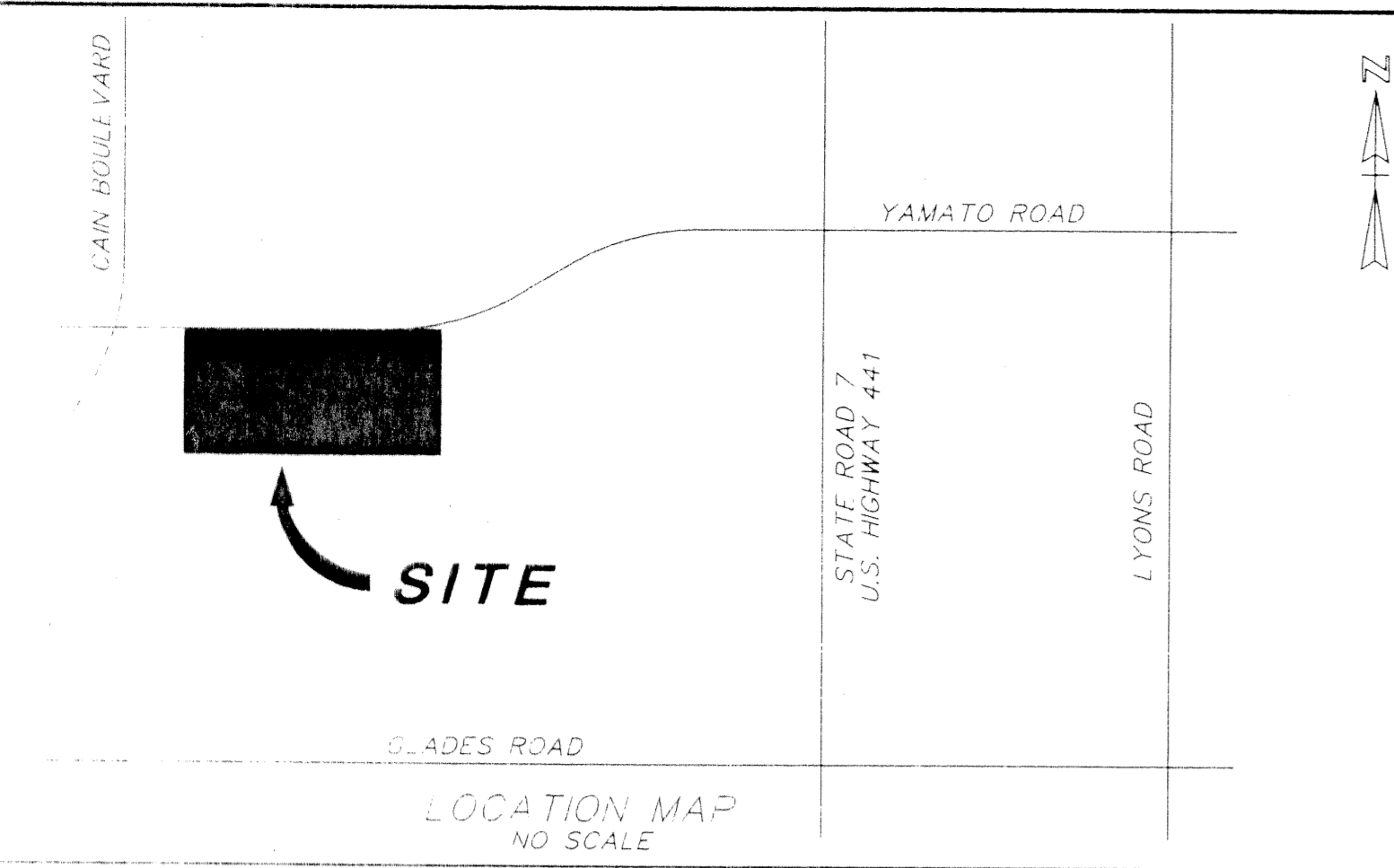
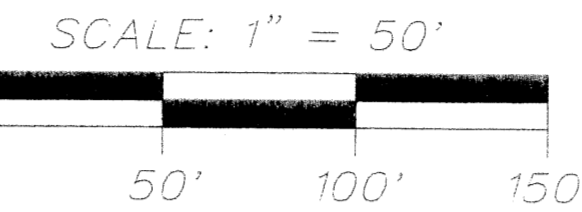


ST. JOHN THE EVANGELIST CATHOLIC CHURCH

0388-014

BEING A REPLAT OF A PORTION OF TRACTS 57 AND 58 OF THE PLAT OF FLORIDA FRUIT LANDS COMPANY'S SUBDIVISION NO. 2, AS RECORDED IN PLAT BOOK 1, PAGE 102, AND THAT PORTION OF THE 15 FOOT WIDE ROAD RIGHT OF WAY, IN ACCORDANCE WITH SAID PLAT, ADJOINING THE SOUTH LINE OF SAID TRACT 57, WHICH WAS ABANDONED BY PALM BEACH COUNTY RESOLUTION NO. R-84-1240, AND RECORDED IN OFFICIAL RECORD BOOK 4347, PAGE 497, ALL BEING IN SECTION 1, TOWNSHIP 47 SOUTH, RANGE 41 EAST, PALM BEACH COUNTY, FLORIDA.

SHEET 2 OF 2



TRACT 6, LAKES AT BOCA RATON-PHASE 1
(PLAT BOOK 48, PAGES 139-141)

YAMATO ROAD
(O.R.B. 4560, PAGE 698 AND O.R.B. 8833, PAGE 1019)

PARCEL B
389,092 SQUARE FEET
8.9323 ACRES

BOCA GREENS PLAT NO. 8
(PLAT BOOK 51, PAGES 21-26)

LEGEND:

- CL = CENTERLINE
- C.A. = CENTRAL ANGLE
- R. = RADIUS
- C.B. = CHORD BEARING
- O.R.B. = OFFICIAL RECORD BOOK
- P.B. = PLAT BOOK
- P.G. = PAGE
- SCALE FACTOR = 1.0000182
- = SET PERMANENT REFERENCE MONUMENT (P.R.M., STAMPED LB 353)
- SUB. = SUBDIVISION
- CO. = COMPANY

O'BRIEN, SUITER & O'BRIEN, INC.
LAND SURVEYORS

CERTIFICATE OF AUTHORIZATION #LB353
SURVEYOR AND MAPPER IN RESPONSIBLE CHARGE: JOHN N. SUITER
2601 NORTH FEDERAL HIGHWAY, DELRAY BEACH, FLORIDA 33483
(561) 276-4501 732-3279 FAX 276-2390

DATE SEPT. 1999	SCALE
FIELD BOOK PAGE NO.	ORDER NO.

STATION: St. John the Evangelist Catholic Church
 BOOK: 87
 PLAT: 8
 FLOOD ZONE: 104B
 ZONING: AR15
 TAX: 79-76
 ZIP CODE: 33474
 PUD NAME: St. John Catholic Church

THE NORTH 40' OF SECTION 12/47/41 LYING EAST OF EAST RIGHT OF WAY LINE OF CAIN BOULEVARD AND WEST OF WEST RIGHT OF WAY LINE OF STATE ROAD 7 QUIT CLAIMED FROM LAKE WORTH DRAINAGE DISTRICT TO J. KEITH SYMONS, BISHOP OF DIOCESE OF PALM BEACH IN O.R.B. 9469, PAGE 286

15' ROAD RIGHT OF WAY ABANDONED BY COUNTY RESOLUTION R-84-1240, O.R.B. 4347, PG. 497

THE SOUTH 40' OF NORTH 80' OF SECTION 12/47/41 DEEDED TO BOCA GREEN FROM LAKE WORTH DRAINAGE DISTRICT PER O.R.B. 8910, PAGE 1009

S.E. CORNER SECTION 12/47/41 BY ORIGINAL SURVEY OF SECTION BY STATE OF FLORIDA IN 1911

FOUND PALM BEACH COUNTY BRASS DISK SET IN CONCRETE

POINT OF COMMENCEMENT

1320.58' S.89°45'05\"/>

749180.5303 915595.6794

5' BUFFER EASEMENT

142.74'

NOT RADIAL

381.45' S.1°06'07\"/>

EAST LINE OF TRACTS 57 & 58

6.5'

749561.9166 915592.3435

ACCESS EASEMENT (O.R.B. 1065, PAGE 853)

312.38' (GROUND) S.24°36'16\"/>

752391.7530 916886.2120

PALM BEACH COUNTY BRASS DISK "SPANISH ISLES US-441"

RADIAL

MO.27.23' W.

4124.42' (GROUND) S.1°17'21\"/>

ARC = 2.42'

R = 1114.51'

C.A. = 0°07'28\"/>

C.B. = N.89°36'21\"/>

5' LIMITED ACCESS EASEMENT

12' UTILITY EASEMENT O.R.B. 8833, PG. 1024

749561.9000 915589.9226

POINT OF TANGENCY

ARC = 244.59'

R = 2231.83'

C.A. = 6°16'44\"/>

C.B. = N.86°31'43\"/>

5.0' S.0°19'55\"/>

749552.3887 914811.2707

5' LIMITED ACCESS EASEMENT

126.0'

SOUTH RIGHT OF WAY LINE AS LAID OUT AND IN USE

120.0'

756515.2060 916795.4220

PALM BEACH COUNTY BRASS DISK "SR7-40"

5825.36' (GROUND) S.2°06'49\"/>

57190' (GROUND) N.80°46'59\"/>

755234.0490 914353.8490

PALM BEACH COUNTY BRASS DISK "FLOP"

5.0' S.0°19'55\"/>

749542.5861 914567.2225

5.0' S.0°19'55\"/>

TRACT 58

TRACT 57

12' UTILITY EASEMENT "PARCEL 07" (O.R.B. 8833, PAGES 1019)

12' UTILITY EASEMENT "PARCEL 07" (O.R.B. 8833, PAGES 1019)

12' UTILITY EASEMENT "PARCEL 07" (O.R.B. 8833, PAGES 1019)

12' UTILITY EASEMENT "PARCEL 07" (O.R.B. 8833, PAGES 1019)

12' UTILITY EASEMENT "PARCEL 07" (O.R.B. 8833, PAGES 1019)

12' UTILITY EASEMENT "PARCEL 07" (O.R.B. 8833, PAGES 1019)

12' UTILITY EASEMENT "PARCEL 07" (O.R.B. 8833, PAGES 1019)