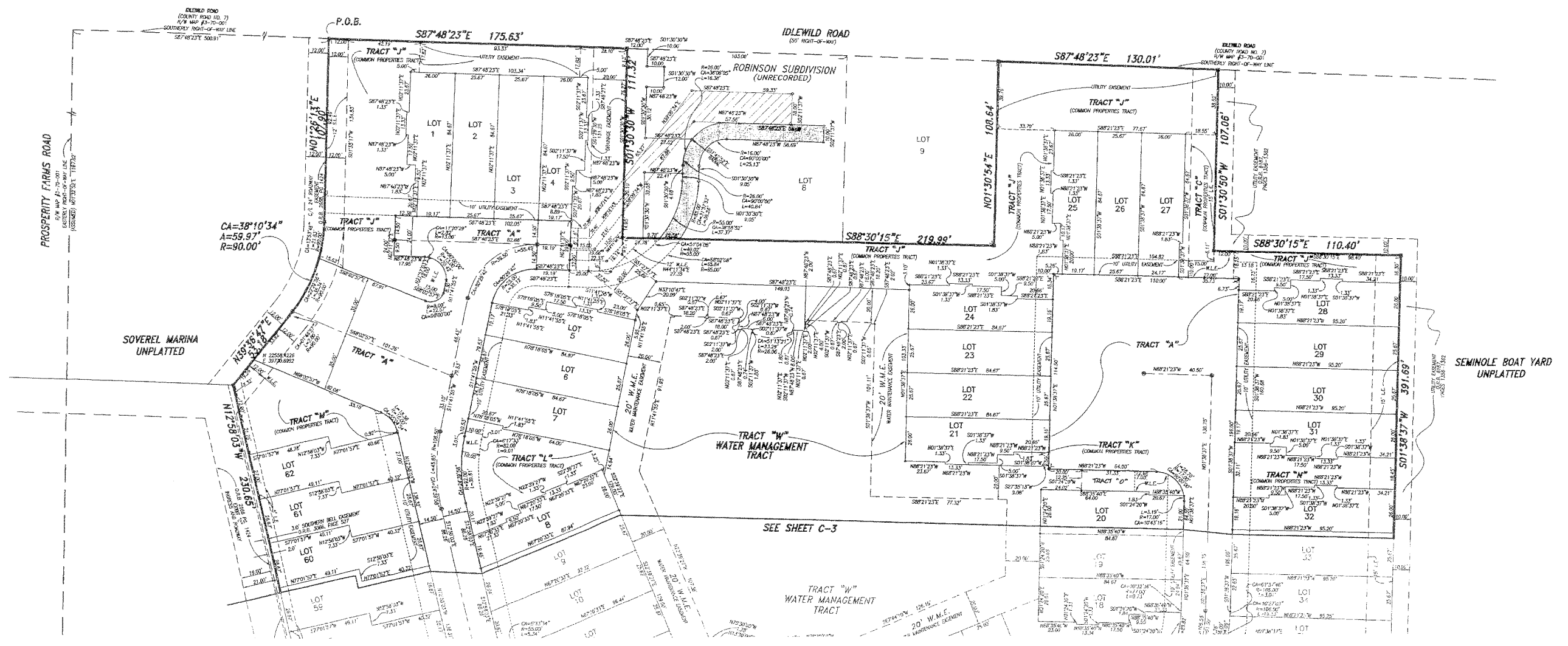
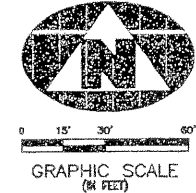


STATE OF FLORIDA
COUNTY OF PALM BEACH
THIS PLAT WAS FILED FOR RECORD AT
THIS _____ DAY OF _____
A.D., 1999 AND DULY
RECORDED IN PLAT BOOK _____ ON
PAGE _____ THROUGH _____
DOROTHY H. MILKEN
CLERK OF THE CIRCUIT COURT
BY: _____ DEPUTY CLERK

MARINA GARDENS PLAT

BEING A PARCEL OF LAND IN THE NORTHEAST QUARTER (NE 1/4) OF SECTION 5,
TOWNSHIP 42 SOUTH, RANGE 43 EAST, CITY OF PALM BEACH GARDENS,
PALM BEACH COUNTY, FLORIDA
MARCH, 2000

175



MARINA GARDENS PLAT

COWNEY-REEDMAN, INC.
1997

11811 U.S. HIGHWAY 1, SUITE 120
PALM BEACH, FLORIDA 33480
TEL: 561-832-1234
FAX: 561-832-1234

3000 ENGINE BOULEVARD, SUITE 200
FORT LAUDERDALE, FL 33309
TEL: 954-835-5555
FAX: 954-835-5555

4101 N. WINDWARD AVE., SUITE 213
FORT LAUDERDALE, FL 33309
TEL: 954-835-5555
FAX: 954-835-5555

FIELD	PROJ. # 99-024	F.B.	PG.
OFFICE JEK	DATE: 9-24-99	DWG. NO. COVER	SCALE: 1"=30'
C'KD: DOC	REF:	SHEET: 2 of 3	