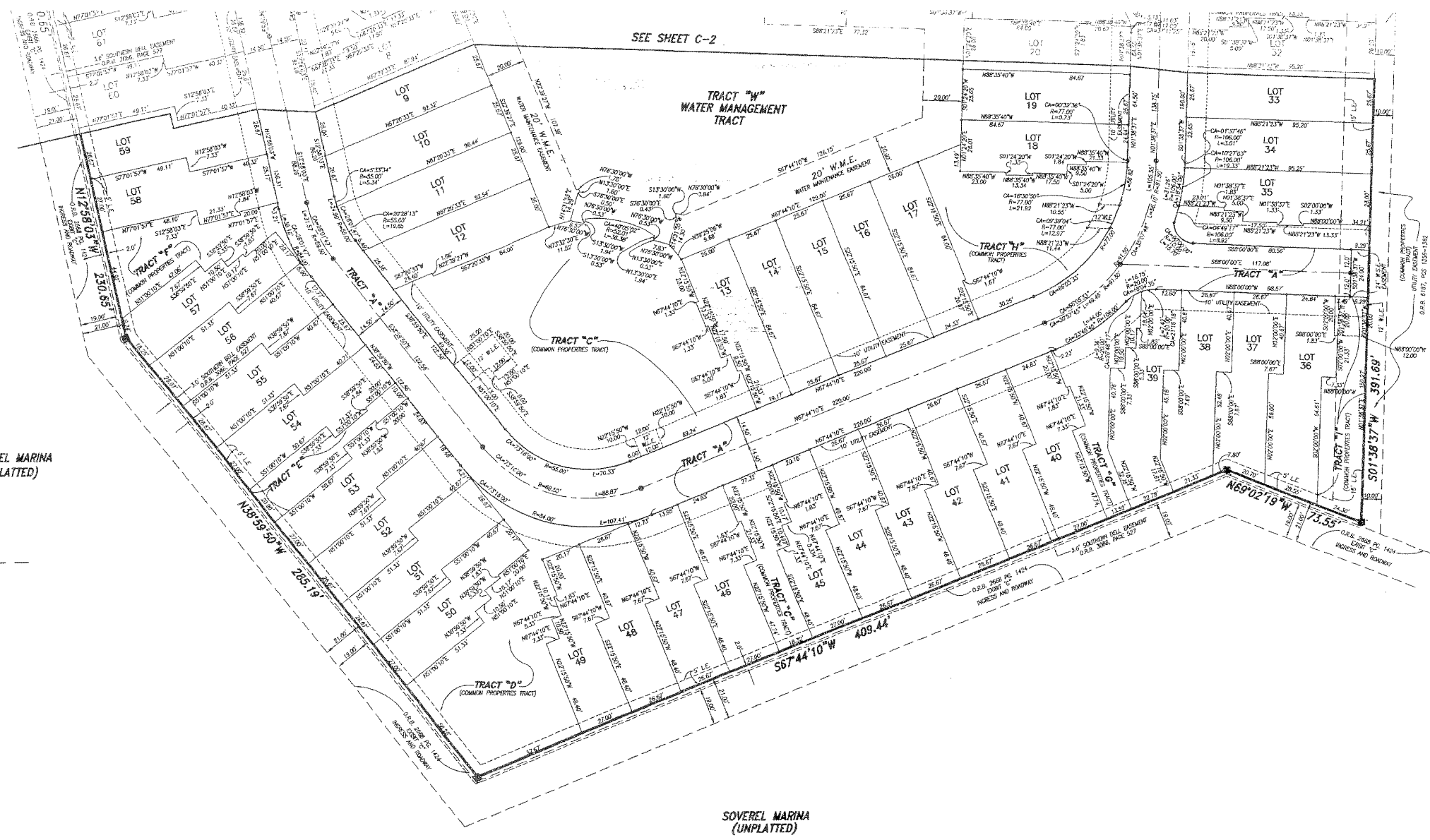
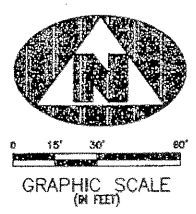


MARINA GARDENS PLAT

BEING A PARCEL OF LAND IN THE NORTHEAST QUARTER (NE 1/4) OF SECTION 5,
TOWNSHIP 42 SOUTH, RANGE 43 EAST, CITY OF PALM BEACH GARDENS,
PALM BEACH COUNTY, FLORIDA
MARCH, 2000

STATE OF FLORIDA
COUNTY OF PALM BEACH
THIS PLAT WAS FILED FOR RECORD AT THIS DAY OF A.D. 1999 AND DULY RECORDED IN PLAT BOOK THROUGH PAGES
DOROTHY H. WILKEN
CLERK OF THE CIRCUIT COURT
BY: _____ DEPUTY CLERK

176



PROSPERITY FARMS ROAD

SOVEREL MARINA (UNPLATTED)

SEMINOLE BOAT YARD (UNPLATTED)

SOVEREL MARINA (UNPLATTED)

P.O.C.
STATE ROAD 10
P.G.A. BOULEVARD
NORTHEAST CORNER OF ROAD LANE
(P.B. 5 PG.108, 190)

MARINA GARDENS PLAT



GARNEY-NELAMUS, INC.
LIMITED

11911 U.S. HIGHWAY 1, SUITE 100 PALM BEACH, FLORIDA 33408 TEL: (561) 852-1100 FAX: (561) 852-1100	3650 ESCAMPE FOLLOWS SUITE 200 PALM BEACH, FLORIDA 33408 TEL: (561) 852-1100 FAX: (561) 852-1100	4101 W. ANDREWS AVE., SUITE 213 POMA LAGOON, FLORIDA 33409 TEL: (561) 852-1100 FAX: (561) 852-1100
FIELD	PROJ. # 99-024	F.B. PG.
OFFICE JEK	DATE: 9-24-99	DWG. NO. COVER
C'KD: DOC	REF:	SHEET: 3 of 3