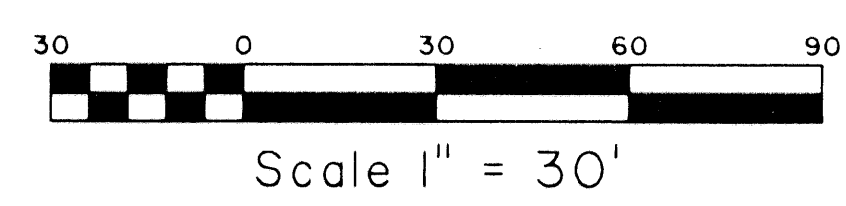
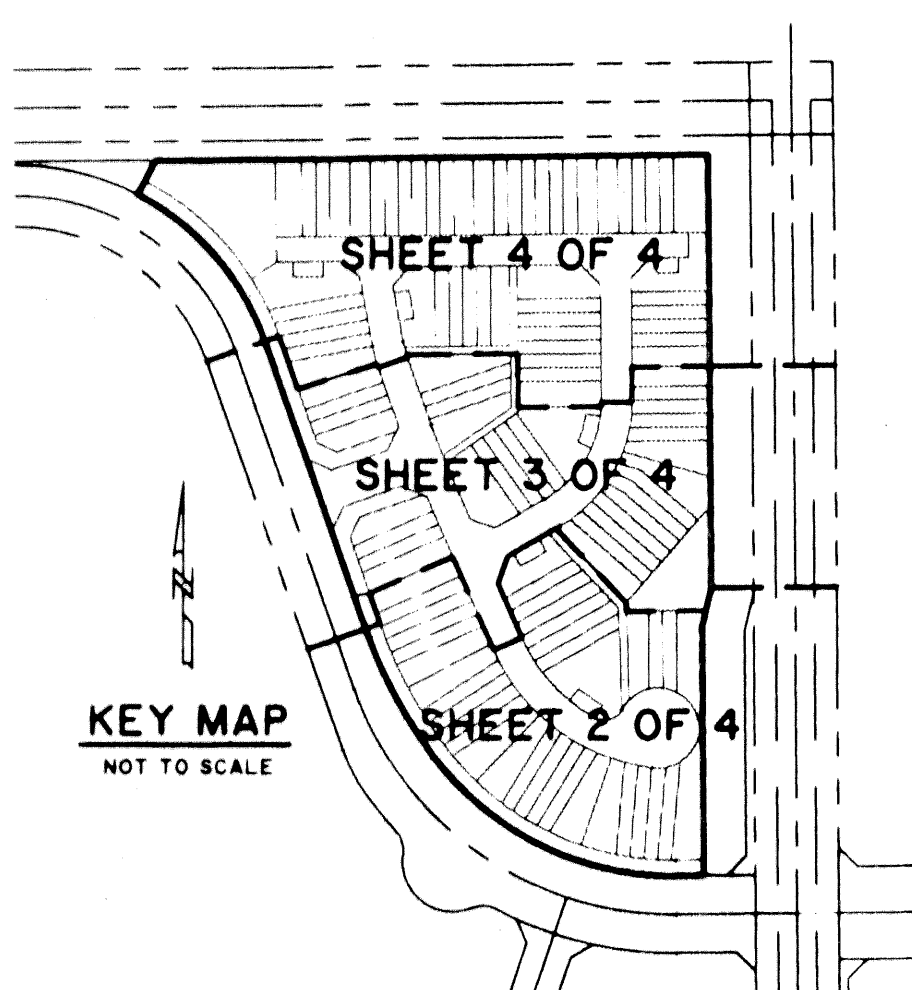


MELROSE P.U.D. VERONA LAKES - TRACT "C-1"

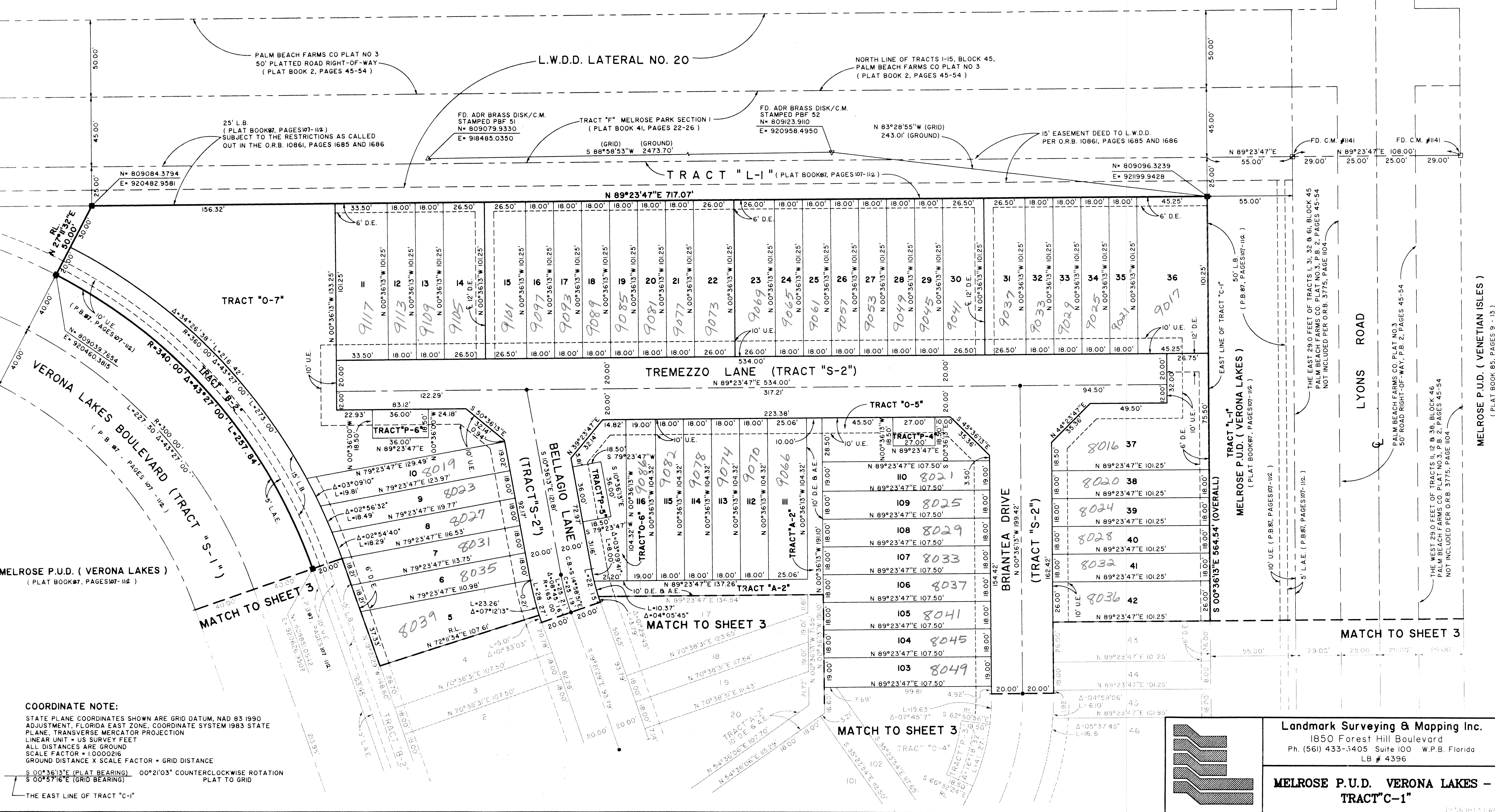
183

A PORTION OF A PLANNED UNIT DEVELOPMENT
 LYING IN SECTION 18, TOWNSHIP 45 SOUTH, RANGE 42 EAST,
 BEING THE REPLAT OF TRACT "C-1" AND TRACT "L-4", MELROSE P.U.D. (VERONA LAKES), AS
 RECORDED IN PLAT BOOK 87, PAGES 107 THRU 112, PUBLIC RECORDS OF PALM BEACH COUNTY, FLORIDA.
 SHEET 4 OF 4



PALM BEACH FARMS COMPANY PLAT NO. 3
 (PLAT BOOK 2, PAGES 45-54)

STATE OF FLORIDA SS
 COUNTY OF PALM BEACH
 THIS PLAT WAS FILED FOR RECORD AT _____
 M. THIS _____ DAY OF _____ 20____
 AND DULY RECORDED IN PLAT BOOK NO. _____
 ON PAGE _____
 DOROTHY H. WILKEN,
 CLERK OF THE CIRCUIT COURT
 BY _____ D.C.



COORDINATE NOTE:
 STATE PLANE COORDINATES SHOWN ARE GRID DATUM, NAD 83 1990
 ADJUSTMENT, FLORIDA EAST ZONE, COORDINATE SYSTEM 1983 STATE
 PLANE, TRANSVERSE MERCATOR PROJECTION
 LINEAR UNIT = U.S. SURVEY FEET
 ALL DISTANCES ARE GROUND
 SCALE FACTOR = 1.0000216
 GROUND DISTANCE X SCALE FACTOR = GRID DISTANCE
 S 00°36'13"E (PLAT BEARING) 00°21'03" COUNTERCLOCKWISE ROTATION
 S 00°57'16"E (GRID BEARING) PLAT TO GRID
 THE EAST LINE OF TRACT "C-1"

Landmark Surveying & Mapping Inc.
 1850 Forest Hill Boulevard
 Ph. (561) 433-3405 Suite 100 W.P.B. Florida
 LB # 4396

MELROSE P.U.D. VERONA LAKES - TRACT "C-1"