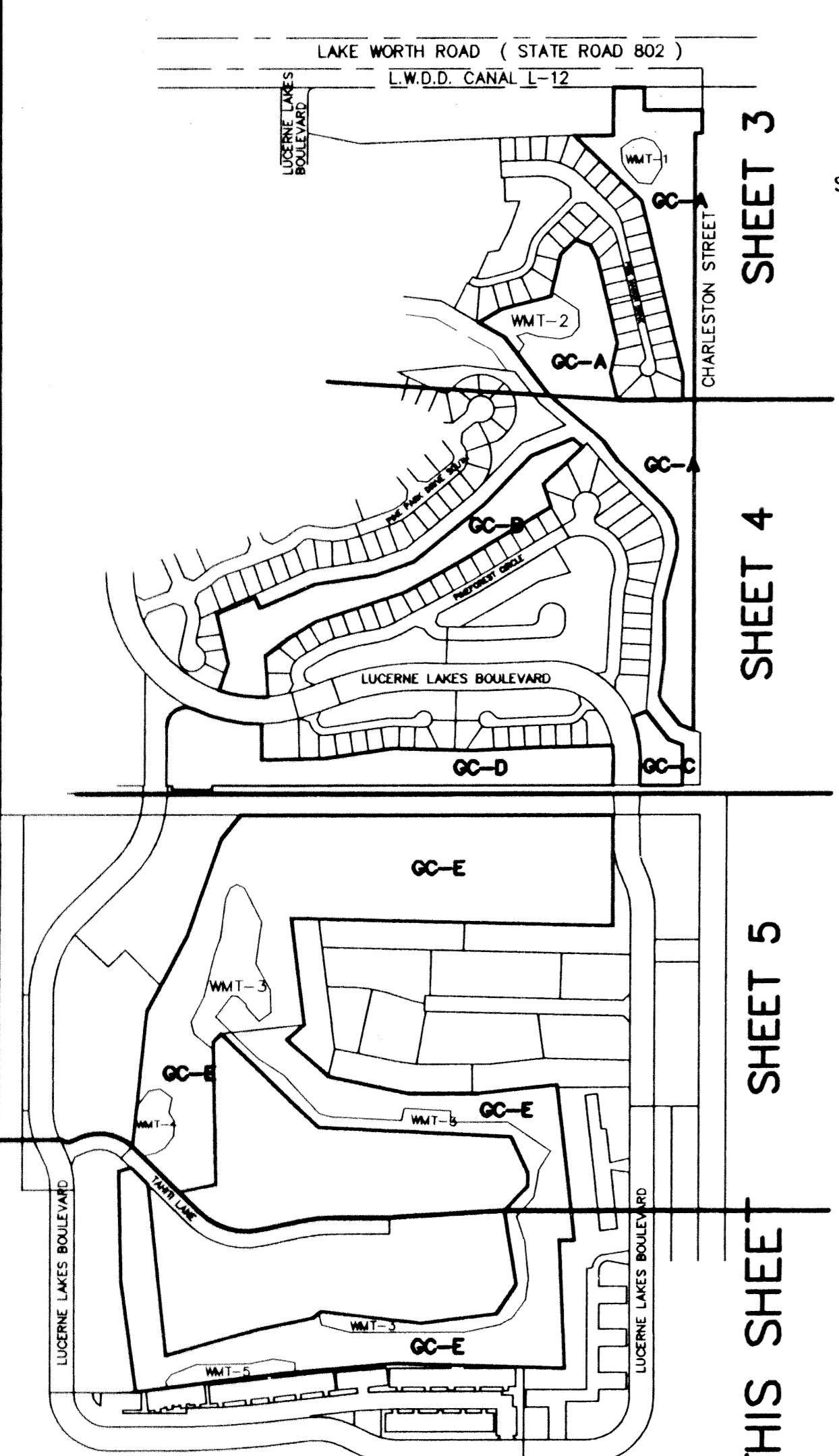
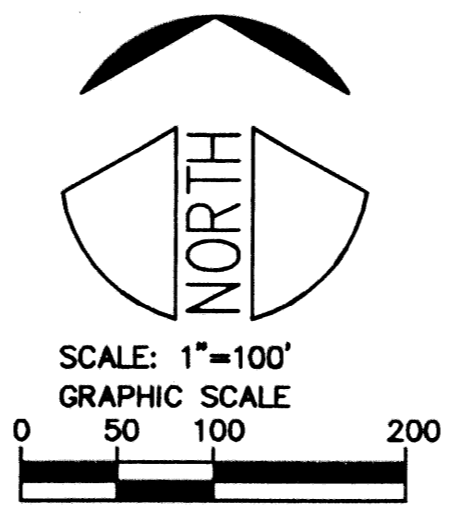


LUCERNE LAKES GOLF COURSE A PORTION OF LUCERNE LAKES P.U.D.

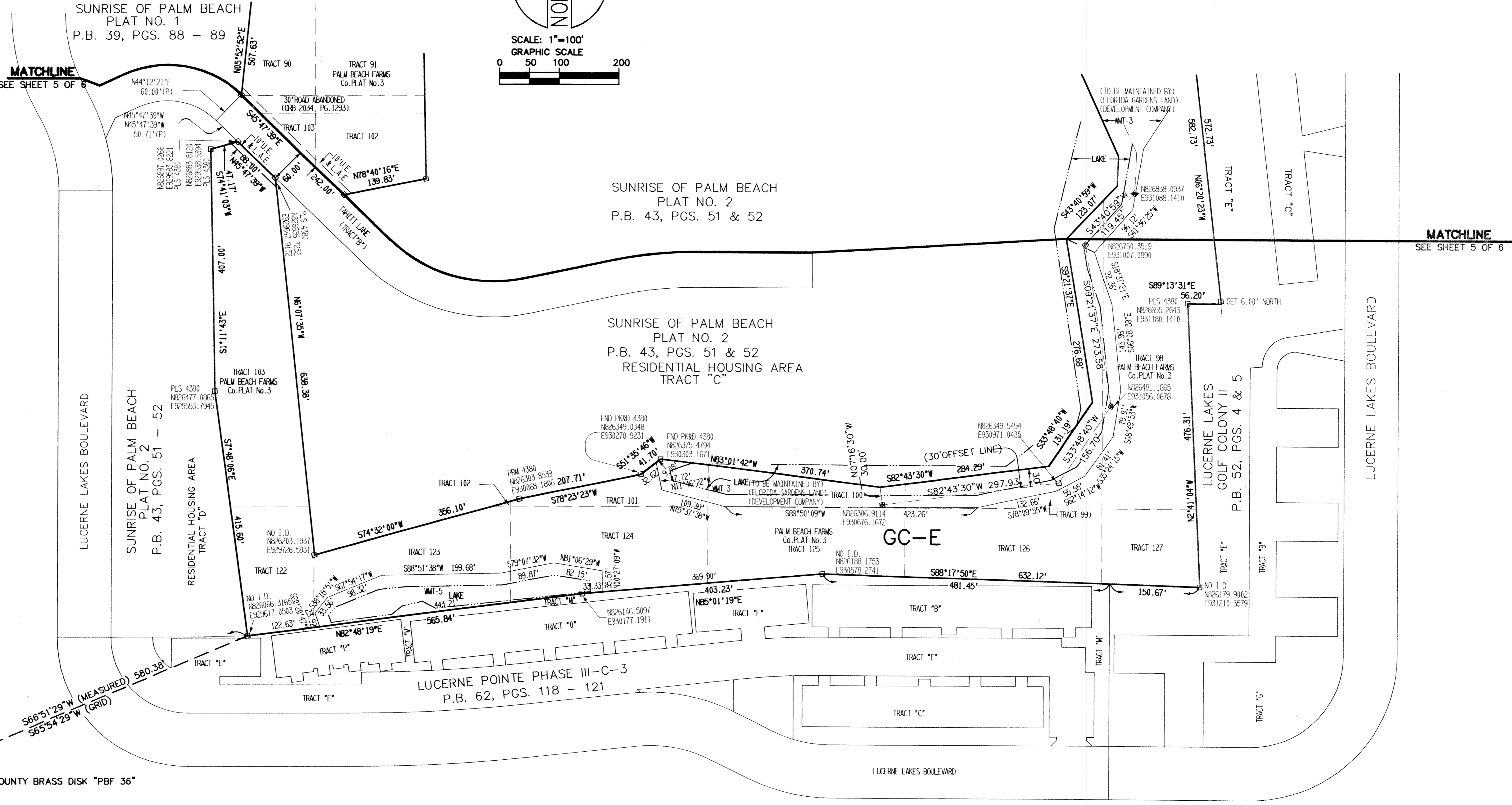
LYING IN SECTIONS 28 AND 33, TOWNSHIP 44 SOUTH, RANGE 42 EAST, PALM BEACH COUNTY, FLORIDA

BEING A REPLAT OF A PORTION OF TRACTS 1, 2, 30 THROUGH 38, 58 THROUGH 71, 90 THROUGH 95, 98 THROUGH 103, AND 122 THROUGH 127,
BLOCK 29, PALM BEACH FARMS Co. PLAT No.3 RECORDED IN PLAT BOOK 2, PAGE 45 OF THE PUBLIC RECORDS OF PALM BEACH COUNTY

JANUARY 1999 SHEET 6 OF 6



KEY MAP



S89°10'10"W (MEASURED)
S88°13'00"W (GRID) 2467.03'
PALM BEACH COUNTY BRASS DISK "PBF 35" N825752.6020 E926621.3940
PALM BEACH COUNTY BRASS DISK "PBF 36" N825829.3780 E929087.2330

Subdivision: Lucerne Lakes Golf Course
Block: 29
Flood Zone: B
Zoning: RM
Taz: 346
PUD Name: Lucerne Lakes

KESHAVARZ & ASSOCIATES, INC.
THIS INSTRUMENT WAS PREPARED BY
CHARLES H. ANDERSON, IN THE OFFICE OF
KESHAVARZ & ASSOCIATES, INC.
1280 N. CONGRESS AVENUE, SUITE 206
WEST PALM BEACH, FLORIDA 33409
TELEPHONE: (561)689-8600 FAX: (561)689-7476
LICENSED BUSINESS No.LB4897