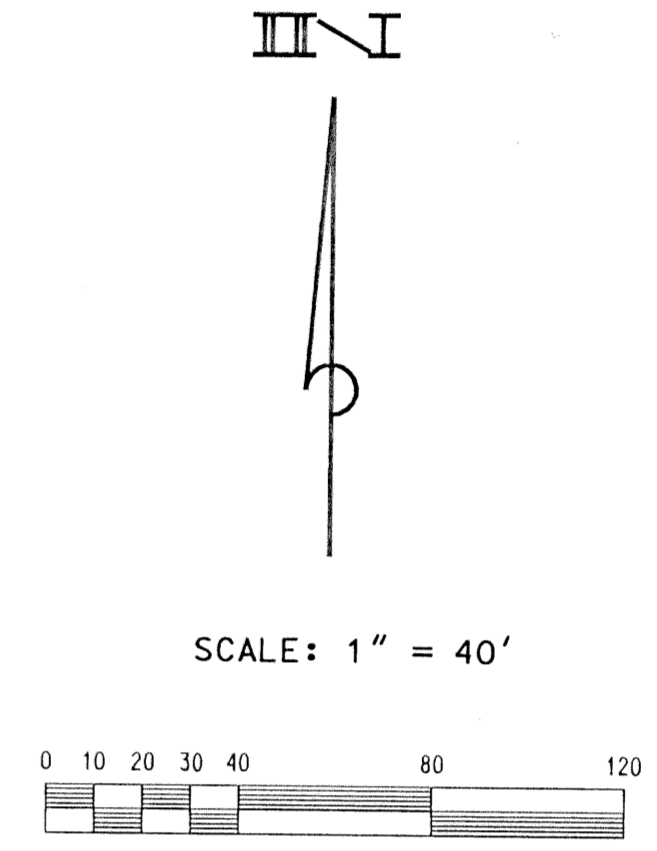
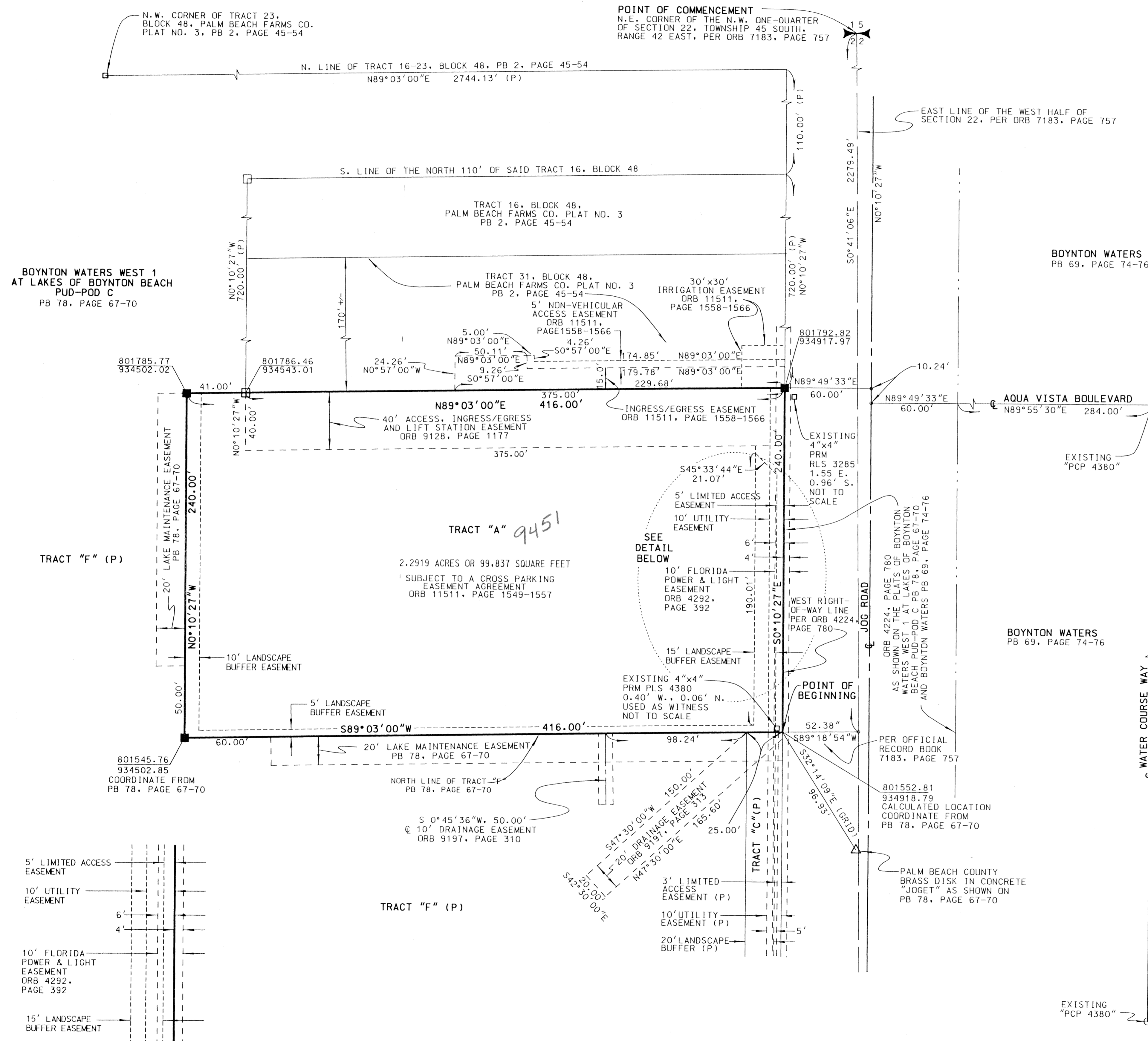


WEST BOYNTON BRANCH LIBRARY

191

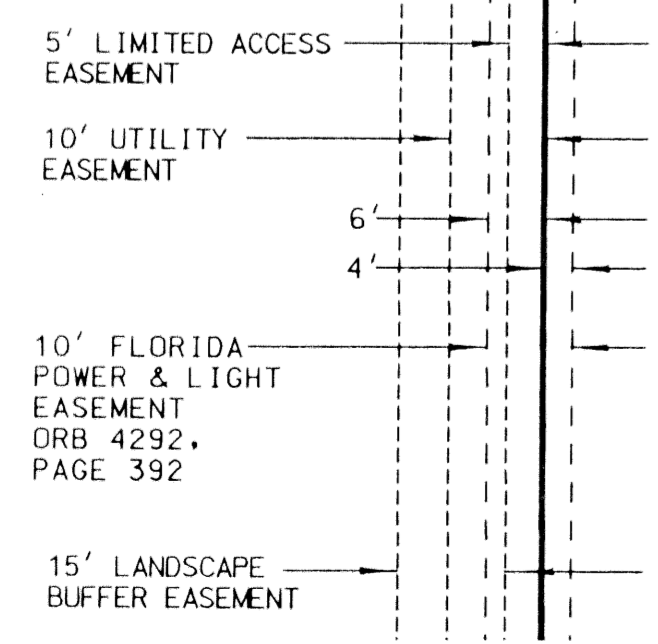
LAKES OF BOYNTON BEACH P.U.D.

BEING A REPLAT OF A PORTION OF TRACT 31, BLOCK 48 OF PALM BEACH FARMS COMPANY PLAT NO. 3, AS RECORDED IN PLAT BOOK 2, PAGES 45 THROUGH 54, INCLUSIVE OF THE PUBLIC RECORDS OF PALM BEACH COUNTY, FLORIDA, BEING IN SECTION 22, TOWNSHIP 45 SOUTH, RANGE 42 EAST, PALM BEACH COUNTY, FLORIDA




STATE PLANE COORDINATES
 COORDINATES SHOWN ARE GRID
 DATUM = NAD 83, 1990 ADJUSTMENT
 ZONE = FLORIDA EAST
 LINEAR UNIT = US SURVEY FOOT
 COORDINATE SYSTEM 1983 STATE PLANE
 TRANSVERSE MERCATOR PROJECTION
 ALL DISTANCES ARE GROUND
 SCALE FACTOR = 1.0000303
 GROUND DISTANCE X SCALE FACTOR = GRID DISTANCE
 N 89° 03' 00" E (PLAT BEARING) = 00° 01' 15" = "COUNTER-CLOCKWISE"
 N 89° 01' 45" E (GRID BEARING) = "BEARING ROTATION"
 (PLAT TO GRID)
 NORTH LINE OF TRACT "F"
 PER PLAT BOOK 78, PAGE 67

LEGEND
 □ = EXISTING "PRM PLS 4380", UNLESS NOTED
 ■ = SET "PRM PSM 5776"
 ⊕ = CENTERLINE
 (P) = BOYNTON WATERS WEST 1 AT LAKES OF BOYNTON BEACH PUD POD C PLAT BOOK 78, PAGE 67-70
 PRM = 4"x4" CONCRETE MONUMENT AS NOTED
 PCP = PERMANENT CONTROL POINT
 ORB = OFFICIAL RECORD BOOK
 PB = PLAT BOOK



DETAIL NOT TO SCALE

SUBDIVISION: West Boynton Branch Library
 BOOK: 191
 FLOOD ZONE: B
 QUAD: 35
 ZONING: CG15E
 SE: 9714
 TAZ: 473
 PUD NAME: West Boynton Library

SHEET: 2	WEST BOYNTON BRANCH LIBRARY	SCALE: AS NOTED		PALM BEACH COUNTY ENGINEERING AND PUBLIC WORKS ENGINEERING SERVICES
OF: 2		APPROVED: N.J.H.		
PROJECT NO. 98227		CHECKED: G.W.M.		
DESIGN FILE NAME: P:\BOYNTON\98227BOY.DGN	DRAWING NO. S-3-99-1325	DATE DRAWN: 11/17/99	160 AUSTRALIAN AVENUE WEST PALM BEACH, FL 33406	