

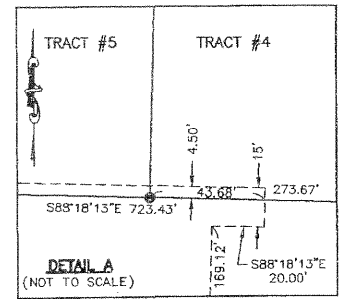
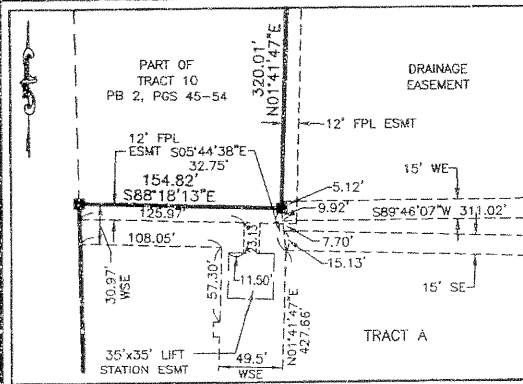
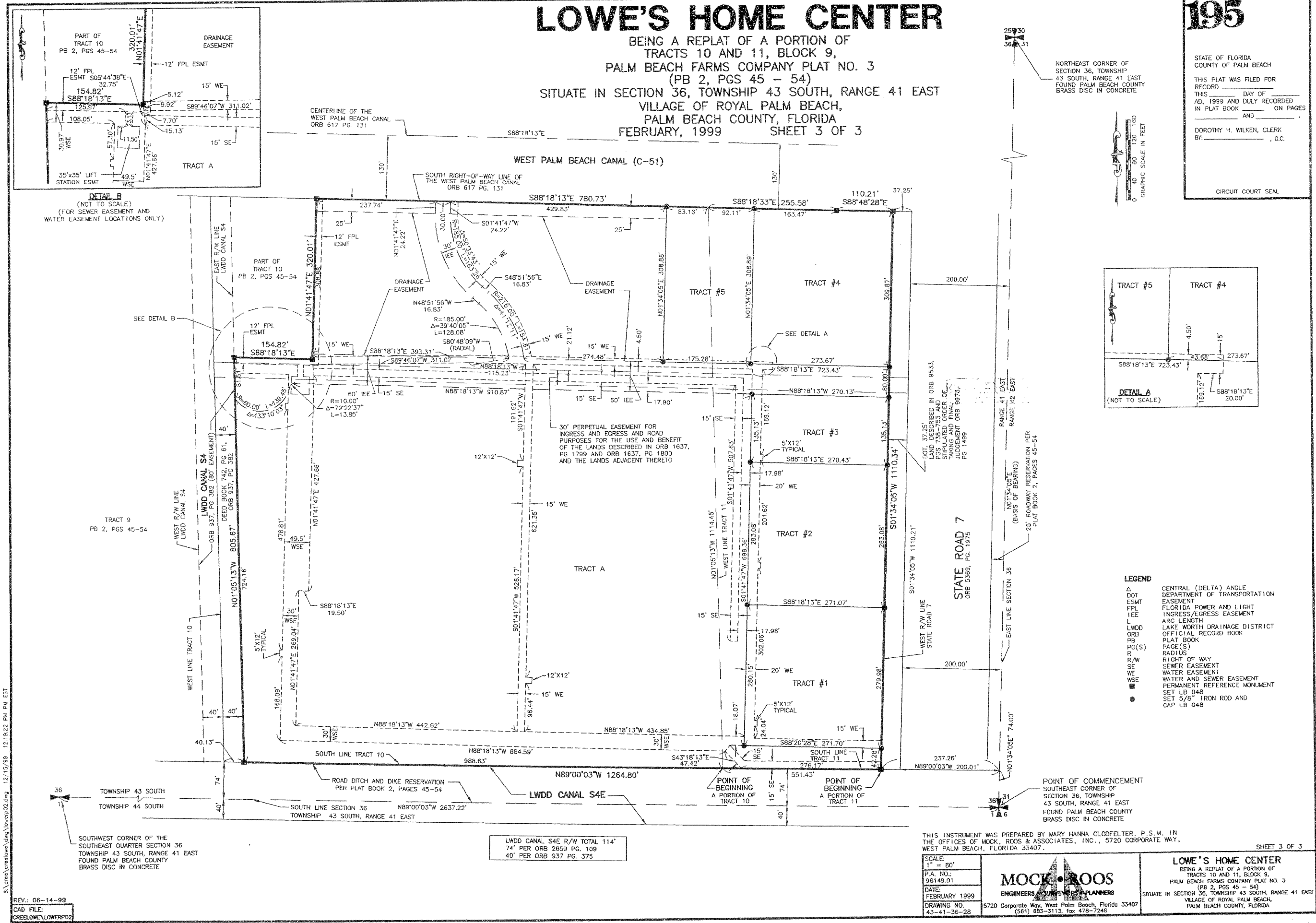
LOWE'S HOME CENTER

BEING A REPLAT OF A PORTION OF
TRACTS 10 AND 11, BLOCK 9,
PALM BEACH FARMS COMPANY PLAT NO. 3
(PB 2, PGS 45 - 54)
SITUATE IN SECTION 36, TOWNSHIP 43 SOUTH, RANGE 41 EAST
VILLAGE OF ROYAL PALM BEACH,
PALM BEACH COUNTY, FLORIDA
FEBRUARY, 1999 SHEET 3 OF 3

195

STATE OF FLORIDA
COUNTY OF PALM BEACH
THIS PLAT WAS FILED FOR
RECORD
THIS _____ DAY OF _____
AD, 1999 AND DULY RECORDED
IN PLAT BOOK _____ ON PAGES
_____ AND _____
AND _____
DOROTHY H. WILKEN, CLERK
By: _____, D.C.

CIRCUIT COURT SEAL



- LEGEND**
- Δ CENTRAL (DELTA) ANGLE
 - DOT DEPARTMENT OF TRANSPORTATION
 - ESMT EASEMENT
 - FPL FLORIDA POWER AND LIGHT
 - IEE INGRESS/EGRESS EASEMENT
 - L ARC LENGTH
 - LWDD LAKE WORTH DRAINAGE DISTRICT
 - ORB OFFICIAL RECORD BOOK
 - PB PLAT BOOK
 - PAGE(S) PAGE(S)
 - R RADIUS
 - R/W RIGHT OF WAY
 - SE SEWER EASEMENT
 - WE WATER EASEMENT
 - WSE WATER AND SEWER EASEMENT
 - PERM PERMANENT REFERENCE MONUMENT
 - SET LB 048 SET 5/8" IRON ROD AND CAP LB 048

THIS INSTRUMENT WAS PREPARED BY MARY HANNA CLODFELTER, P.S.M., IN THE OFFICES OF MOCK, ROOS & ASSOCIATES, INC., 5720 CORPORATE WAY, WEST PALM BEACH, FLORIDA 33407. SHEET 3 OF 3

SCALE:	1" = 80'
P.A. NO.:	98149.01
DATE:	FEBRUARY 1999
DRAWING NO.:	43-41-36-28

MOCK • ROOS
ENGINEERS AND SURVEYORS PLANNERS
5720 Corporate Way, West Palm Beach, Florida 33407
(561) 683-3113, fax 478-7248

LOWE'S HOME CENTER
BEING A REPLAT OF A PORTION OF
TRACTS 10 AND 11, BLOCK 9,
PALM BEACH FARMS COMPANY PLAT NO. 3
(PB 2, PGS 45 - 54)
SITUATE IN SECTION 36, TOWNSHIP 43 SOUTH, RANGE 41 EAST
VILLAGE OF ROYAL PALM BEACH,
PALM BEACH COUNTY, FLORIDA

S:\Cred\Creation\Map\Year\99\02.dwg 12/15/99 12:19:22 PM EST

REV.: 06-14-99
CAD FILE:
CRESLOWE\LOWERPO2

LWDD CANAL S4E R/W TOTAL 114'
74' PER ORB 2659 PG. 109
40' PER ORB 937 PG. 375