

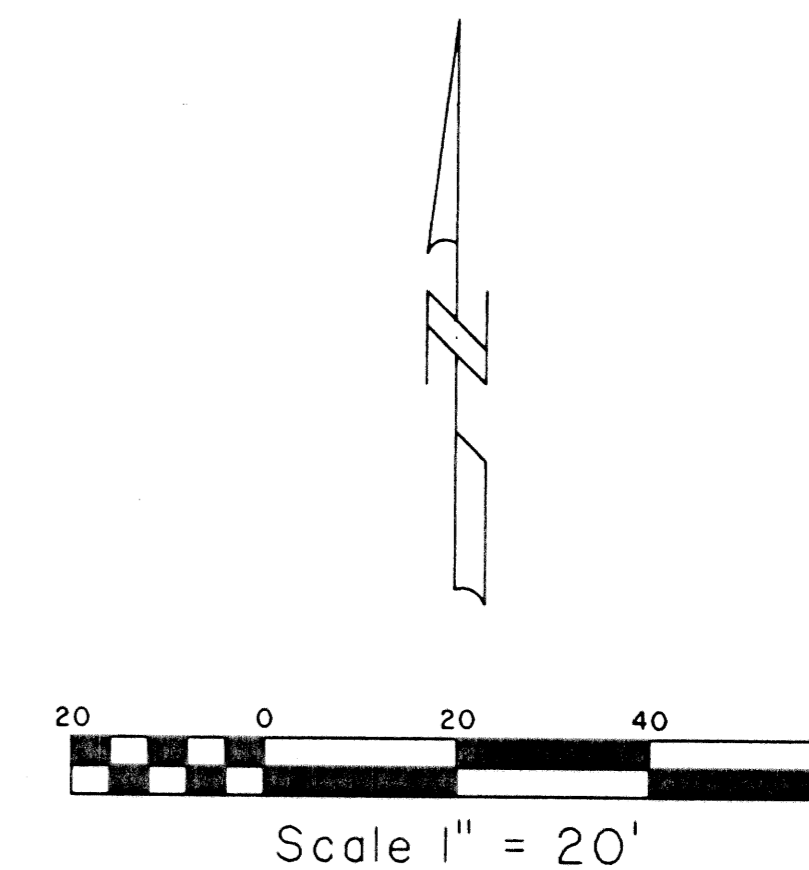
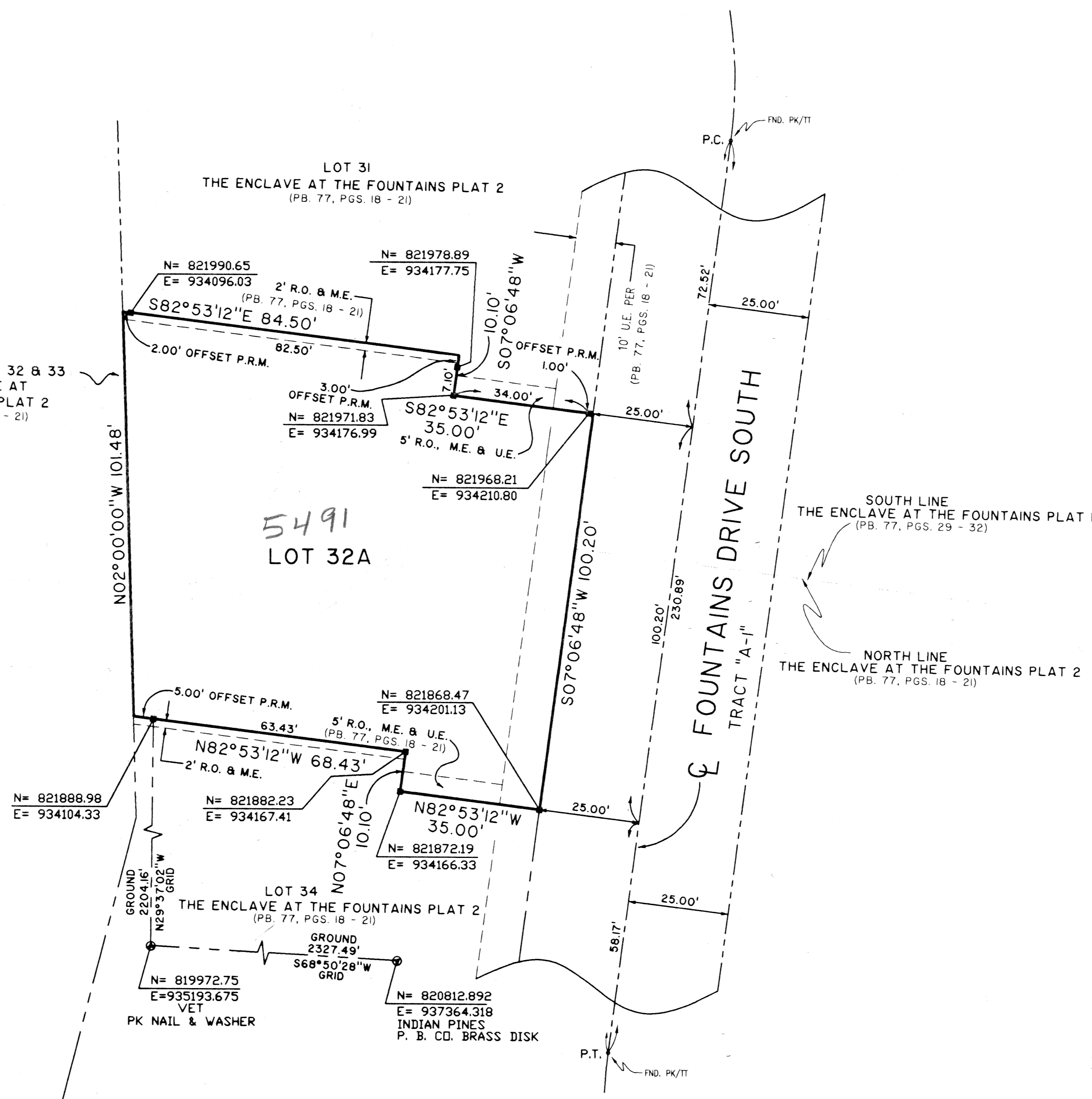
A PART OF FOUNTAINS SOUTH PLANNED UNIT DEVELOPMENT (P.U.D.) ENCLAVE AT THE FOUNTAINS REPLAT

BEING A REPLAT OF LOTS 32 AND 33, THE ENCLAVE AT THE FOUNTAINS PLAT 2
AS RECORDED IN PLAT BOOK 77, PAGES 18 THRU 21 OF THE PUBLIC RECORDS
OF PALM BEACH COUNTY, FLORIDA AND LYING IN SECTION 34, TOWNSHIP 44 SOUTH,
RANGE 42 EAST, PALM BEACH COUNTY, FLORIDA.
SHEET 2 OF 2

197

STATE OF FLORIDA
COUNTY OF PALM BEACH
THIS PLAT WAS FILED FOR RECORD AT _____
M. THIS DAY OF _____
AND DULY RECORDED IN PLAT BOOK NO. _____
ON PAGE _____
DOROTHY H. WILKEN, CLERK OF THE CIRCUIT COURT
BY _____ D.C.

GOLF TRACT 3
FOUNTAINS SOUTH GOLF COURSE
(PLAT BOOK 67, PAGES 18 - 22)



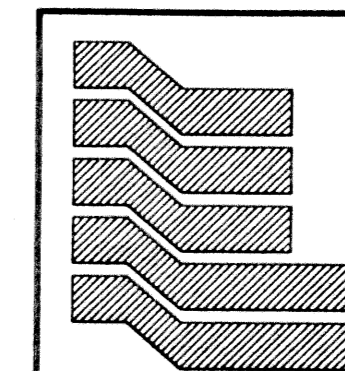
Subdivision
Fountains South
Book 87
Page 17
Flood Map # 1704
Quadrant 33
SE 81-114A
TAX 318
PUD NAME

COORDINATE NOTE:

STATE PLANE COORDINATES SHOWN ARE GRID DATUM, NAD 83 1990
ADJUSTMENT, FLORIDA EAST ZONE, COORDINATE SYSTEM 1983 STATE
PLANE, TRANSVERSE MERCATOR PROJECTION
LINEAR UNIT = US SURVEY FEET
ALL DISTANCES ARE GROUND
SCALE FACTOR = 1.000029796
GROUND DISTANCE X SCALE FACTOR = GRID DISTANCE

N 02°00'00\"W (PLAT BEARING) -01°00'22\" COUNTER CLOCKWISE ROTATION
N 03°00'22\"W (GRID BEARING) PLAT TO GRID

THE WEST LINE OF LOTS 32 & 33 AS SHOWN HEREON



Landmark Surveying & Mapping Inc.
1850 Forest Hill Boulevard
Ph. (561) 433-5405 Suite 100 W.P.B. Florida

ENCLAVE AT THE FOUNTAINS REPLAT