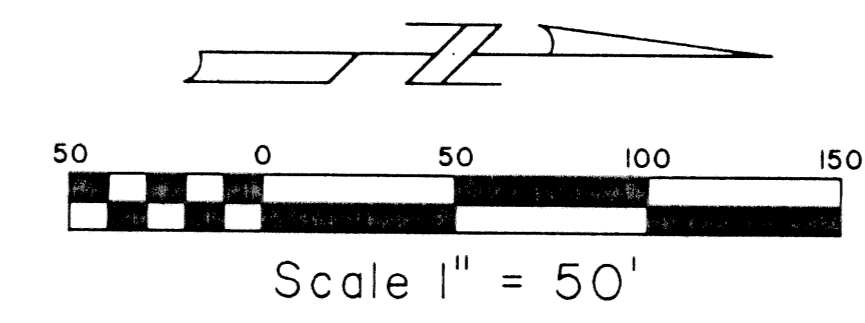


# WINDSOR PARK - PHASE II

LYING IN THE NORTHEAST QUARTER ( NE. 1/4 ) OF SECTION II,  
TOWNSHIP 44 SOUTH, RANGE 42 EAST, PALM BEACH COUNTY, FLORIDA,  
BEING PART OF A P.U.D.  
SHEET 2 OF 2

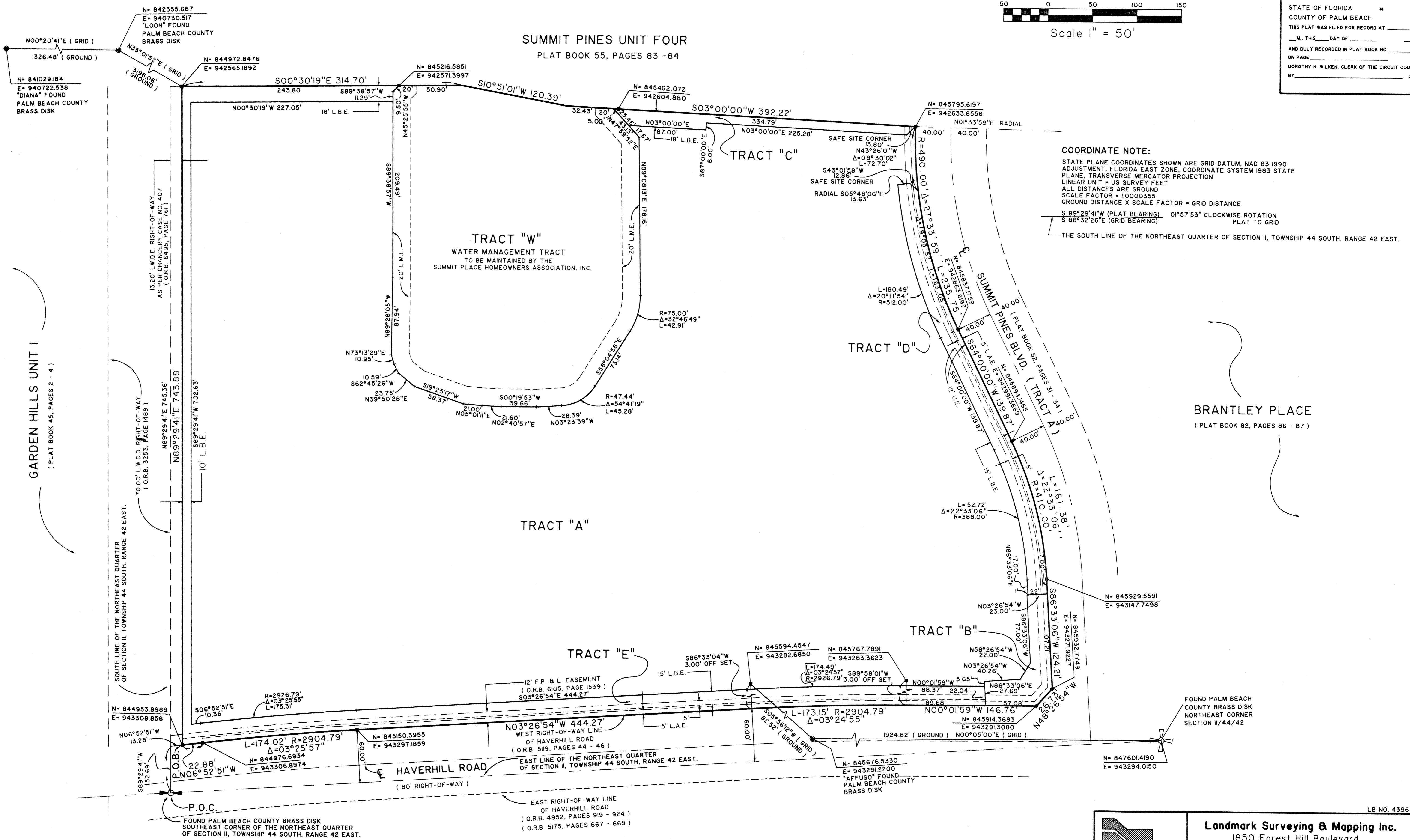
435-009

3



STATE OF FLORIDA  
COUNTY OF PALM BEACH  
THIS PLAT WAS FILED FOR RECORD AT \_\_\_\_\_  
ON \_\_\_\_\_ M., THIS \_\_\_\_\_ DAY OF \_\_\_\_\_  
AND DULY RECORDED IN PLAT BOOK NO. \_\_\_\_\_  
ON PAGE \_\_\_\_\_  
DOROTHY H. WILKEN, CLERK OF THE CIRCUIT COURT  
BY \_\_\_\_\_ D.C.

SUMMIT PINES UNIT FOUR  
PLAT BOOK 55, PAGES 83 - 84



**COORDINATE NOTE:**  
STATE PLANE COORDINATES SHOWN ARE GRID DATUM, NAD 83 1990  
ADJUSTMENT, FLORIDA EAST ZONE, COORDINATE SYSTEM 1983 STATE  
PLANE, TRANSVERSE MERCATOR PROJECTION  
LINEAR UNIT = US SURVEY FEET  
ALL DISTANCES ARE GROUND  
SCALE FACTOR = 1.000355  
GROUND DISTANCE X SCALE FACTOR = GRID DISTANCE  
S 89°29'41"W (PLAT BEARING) 0°57'53" CLOCKWISE ROTATION  
S 88°32'26"E (GRID BEARING) PLAT TO GRID  
THE SOUTH LINE OF THE NORTHEAST QUARTER OF SECTION II, TOWNSHIP 44 SOUTH, RANGE 42 EAST.

BRANTLEY PLACE  
( PLAT BOOK 82, PAGES 86 - 87 )

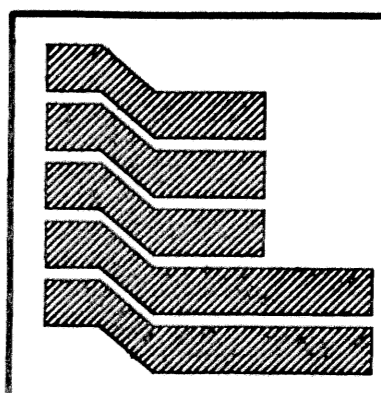
GARDEN HILLS UNIT I  
( PLAT BOOK 45, PAGES 2 - 4 )

WINDSOR PARK II  
PAGE 3  
DATE 1/16/13  
DRAWN PS  
CHKD PS  
TAL 286

FOUND PALM BEACH COUNTY BRASS DISK  
SOUTHEAST CORNER OF THE NORTHEAST QUARTER  
OF SECTION II, TOWNSHIP 44 SOUTH, RANGE 42 EAST.

EAST RIGHT-OF-WAY LINE  
OF HAVERHILL ROAD  
( O.R.B. 4952, PAGES 919 - 924 )  
( O.R.B. 5175, PAGES 667 - 669 )

FOUND PALM BEACH  
COUNTY BRASS DISK  
NORTHEAST CORNER  
SECTION II/44/42



Landmark Surveying & Mapping Inc.  
1850 Forest Hill Boulevard  
Ph. (561) 433-5405 Suite 100 W.P.B. Florida

**WINDSOR PARK - PHASE II**

LB NO. 4396