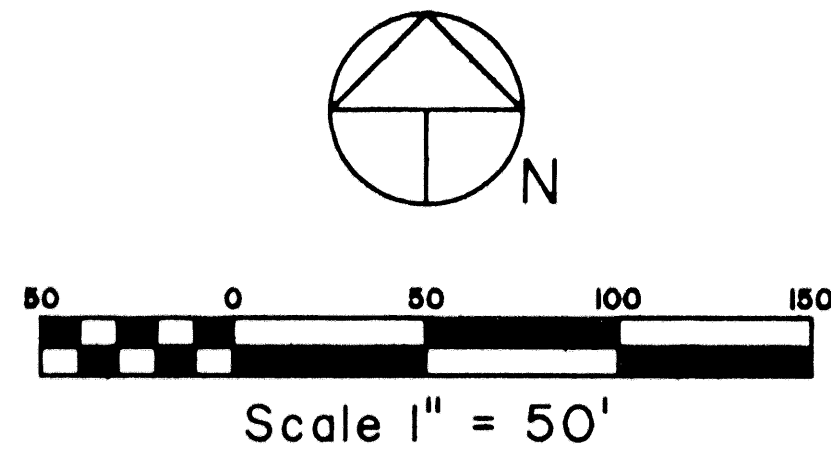


SADDLEBROOK VILLAGE P.U.D.

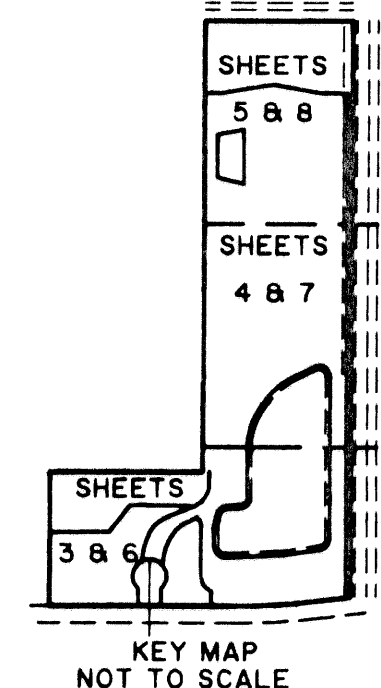
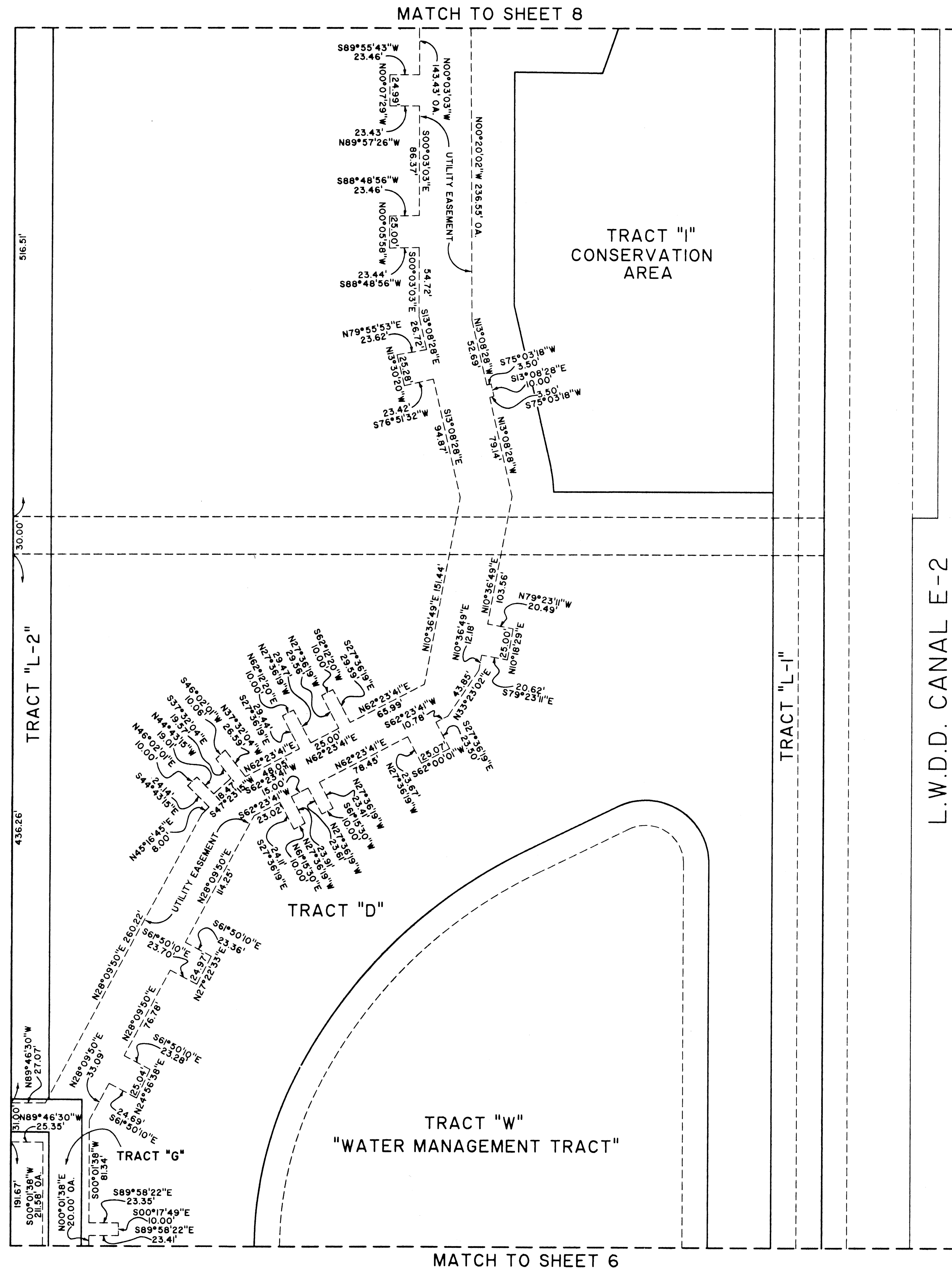
BEING A REPLAT OF A PORTION OF TRACTS 7, 14, 15 AND 30 FOOT RIGHT-OF-WAY,
 PALM BEACH FARMS COMPANY PLAT NO. 3, AS RECORDED IN PLAT BOOK 2, PAGES 45
 THROUGH 54, OF THE PUBLIC RECORDS OF PALM BEACH COUNTY, FLORIDA AND LYING IN
 SECTIONS 29 AND 32, TOWNSHIP 43 SOUTH, RANGE 42 EAST, PALM BEACH COUNTY, FLORIDA.
 SHEET 7 OF 8

0743-001

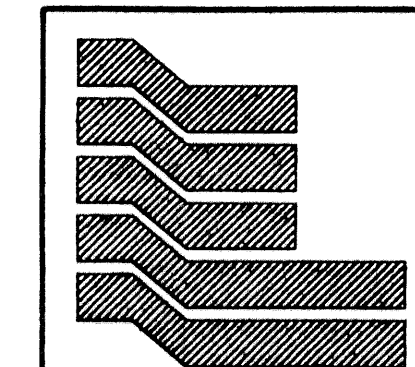
69



STATE OF FLORIDA
 COUNTY OF PALM BEACH
 THIS PLAT WAS FILED FOR RECORD AT _____
 M., THIS _____ DAY OF _____
 AND DULY RECORDED IN PLAT BOOK NO. _____
 ON PAGE _____
 DOROTHY H. WILKEN, CLERK OF THE CIRCUIT COURT
 BY _____ D.C.



SADDLEBROOK VILLAGE PUD
 PLAT NO. 1504
 RECORDING PUD
 ZIP CODE
 33411
 TAZ 1065
 PUD NAME



Landmark Surveying & Mapping Inc.
 1850 Forest Hill Boulevard
 Ph. (561) 433-5405 Suite 100 W.P.B. Florida

SADDLEBROOK VILLAGE
 P.U.D.