

NYE PLANNED UNIT DEVELOPMENT RIVERMILL

A PARCEL OF LAND LYING IN
SECTION 2, TOWNSHIP 45 SOUTH, RANGE 42 EAST,
PALM BEACH COUNTY, FLORIDA.
SHEET 6 OF 7 FEBRUARY, 2000

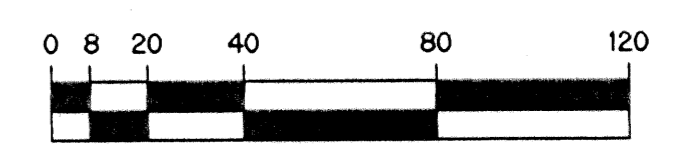
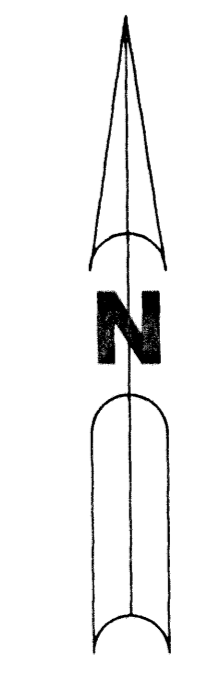
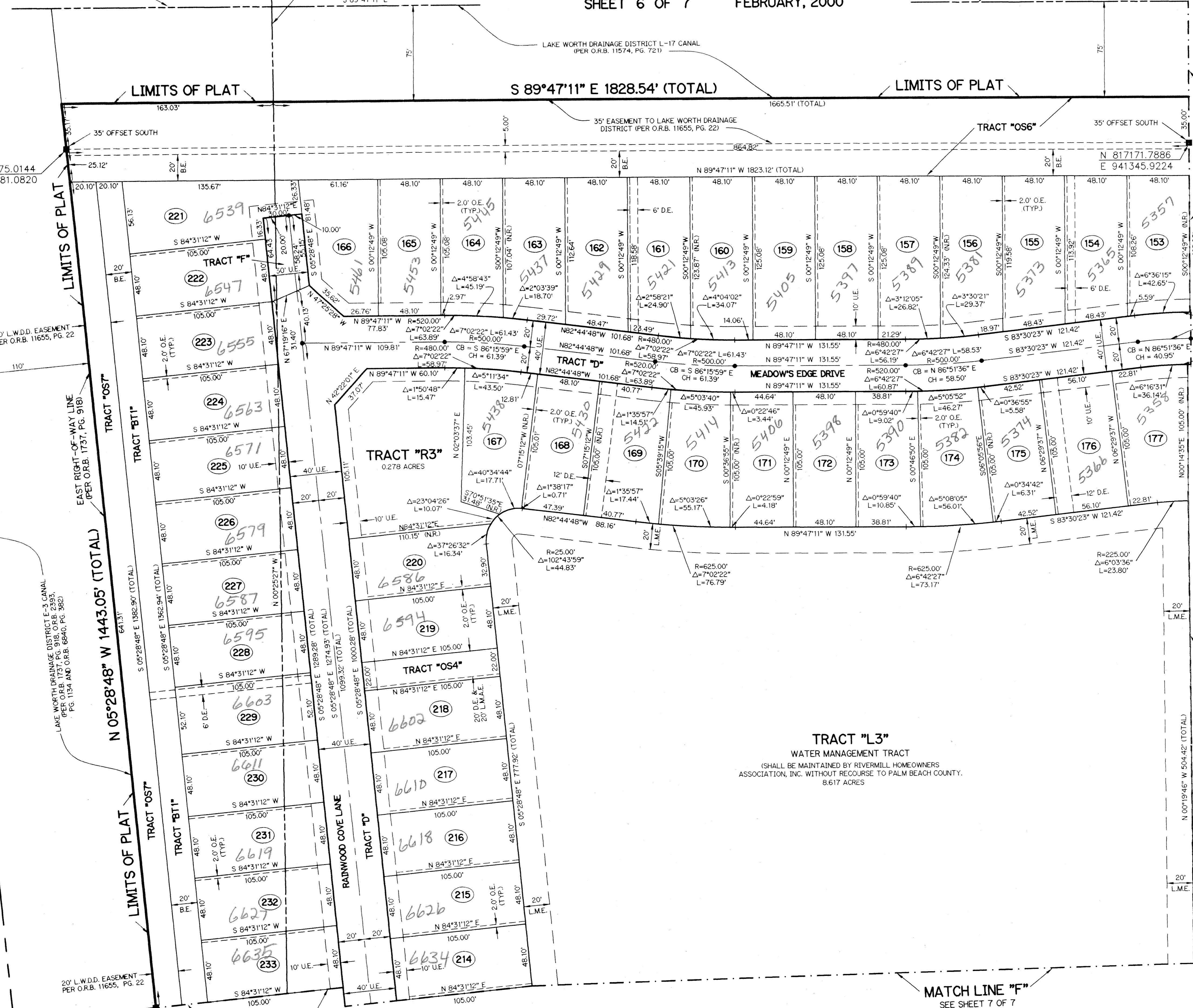
UNPLATTED

UNPLATTED

NORTH LINE OF THE SOUTHWEST
1/4 OF SECTION 2-45-42

WEST LINE OF THE SOUTHEAST
1/4 OF SECTION 2-45-42

NORTH LINE OF THE SOUTHEAST
1/4 OF SECTION 2-45-42



SCALE: 1" = 40'

NOTE:

COORDINATES SHOWN ARE GRID COORDINATES
 DATUM = NAD 83 (1990 ADJUSTMENT)
 ZONE = FLORIDA EAST ZONE
 LINEAR UNIT = U.S. SURVEY FEET
 COORDINATE SYSTEM 1983 STATE PLANE
 TRANSVERSE MERCATOR PROJECTION
 ALL DISTANCES ARE GROUND
 SCALE FACTOR = 1.000034481
 NO ROTATION: PLAT BEARING = GRID BEARING

LEGEND:

- - SET PERMANENT REFERENCE MONUMENT, LB-6674
 - - PERMANENT CONTROL POINT, PSM #4190
 - Δ - DELTA ANGLE
 - B.E. - BUFFER EASEMENT
 - C. - CENTERLINE
 - C.B. - CHORD BEARING
 - C.H. - CHORD LENGTH
 - D.B. - DEED BOOK
 - D.E. - DRAINAGE EASEMENT
 - L. - ARC LENGTH
 - A.E. - ACCESS EASEMENT
 - L.A.E. - LIMITED ACCESS EASEMENT
 - L.M.A.E. - LAKE MAINTENANCE ACCESS EASEMENT
 - L.M.E. - LAKE MAINTENANCE EASEMENT
 - L.W.D.D. - LAKE WORTH DRAINAGE DISTRICT
 - N.R. - NOT RADIAL
 - N.T.S. - NOT TO SCALE
 - O.E. - OVERHANG EASEMENT
 - O.R.B. - OFFICIAL RECORD BOOK
 - P.B. - PLAT BOOK
 - P.G.S. - PAGES
 - P.S.M. - PROFESSIONAL SURVEYOR AND MAPPER
 - R. - RADIUS
 - R/W. - RIGHT-OF-WAY
 - S.T. - SURVEY TIE
 - U.E. - UTILITY EASEMENT
 - N.T. - NON-TANGENT
 - R.F. - RADIAL TO FRONT LOT LINE
 - R.R. - RADIAL TO REAR LOT LINE
 - P.A.E. - PEDESTRIAN ACCESS EASEMENT
- N 814602.8657
 E 785753.1680 - DENOTES STATE PLANE COORDINATES

THIS INSTRUMENT PREPARED BY
 WILBUR F. DIVINE, P.S.M. 4190, STATE OF FLORIDA
 LAWSON, NOBLE AND WEBB, INC., LB-6674
 ENGINEERS PLANNERS SURVEYORS
 420 COLUMBIA DRIVE, SUITE 110
 WEST PALM BEACH, FLORIDA

RIVERMILL
 SUBDIVISION
 BOOK 88
 FLOOD ZONE
 QUAD # 34
 SEE
 TAZ 434
 PUD NAME
 NYE

PAGE 76
 FLOOD MAP # 175B
 ZONING R-10/HO-2
 ZIP CODE 33463

