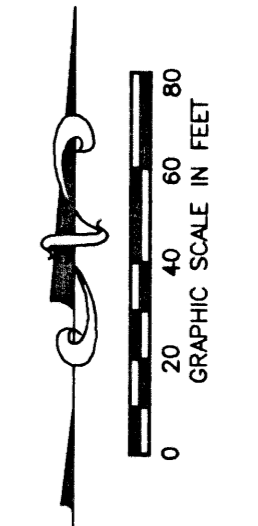


STATE OF FLORIDA
 COUNTY OF PALM BEACH

THIS PLAT WAS FILED FOR
 RECORD _____ DAY OF _____
 AD, 2000 AND DULY RECORDED
 IN PLAT BOOK _____ ON PAGES
 _____ AND _____

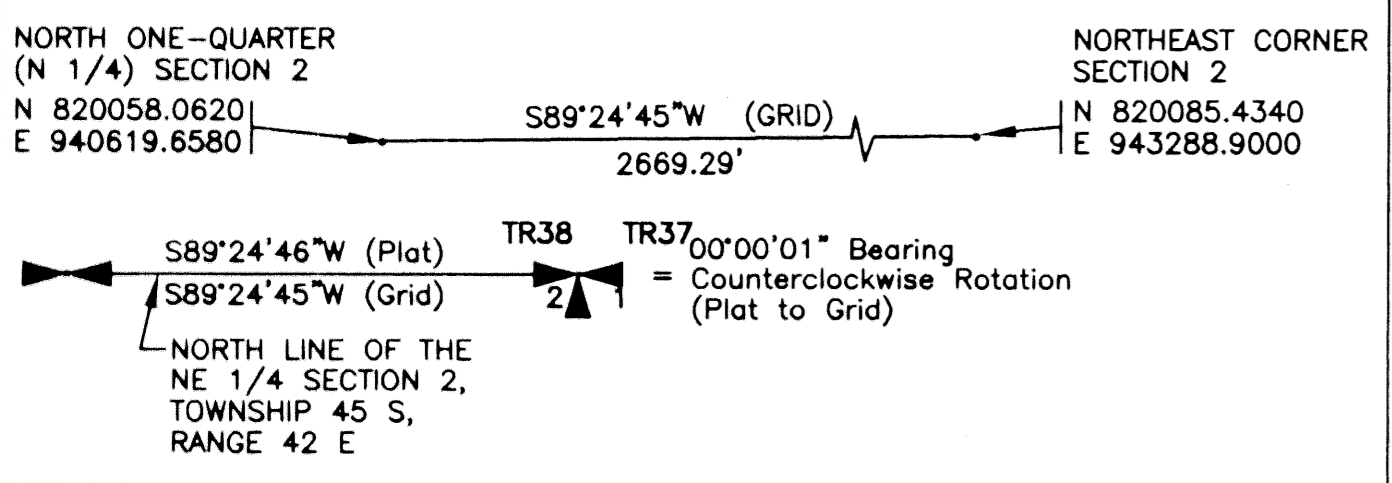
DOROTHY H. WILKEN, CLERK
 BY: _____, D.C.



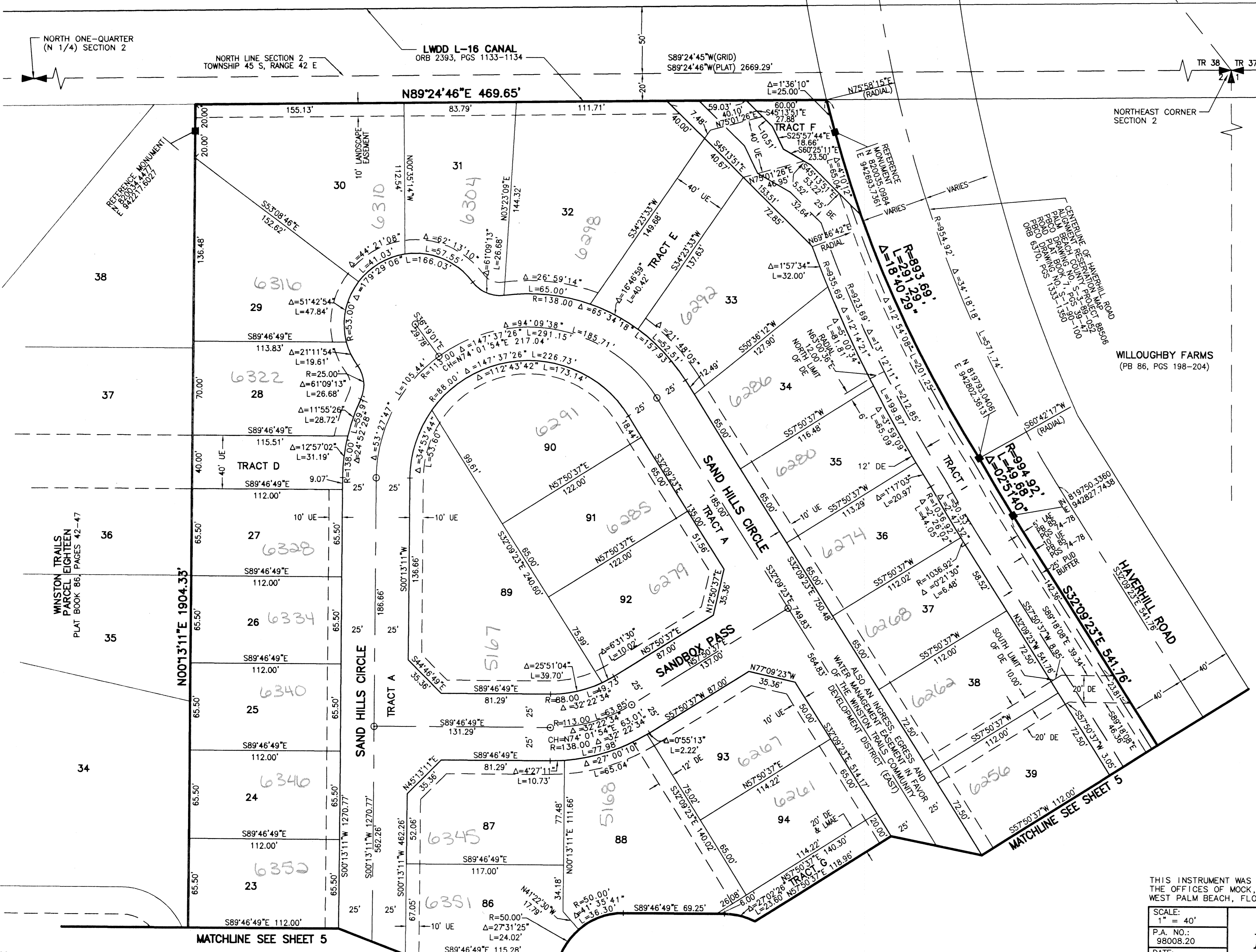
WINSTON TRAILS PARCEL TWENTY

PART OF WINSTON TRAILS P.U.D.
 BEING A REPLAT OF TRACT G,
 "WINSTON TRAILS EAST"
 (PB 85, PGS 74 - 78)

SITUATE IN SECTION 2, TOWNSHIP 45 SOUTH, RANGE 42 EAST
 PALM BEACH COUNTY, FLORIDA
 NOVEMBER, 1999 SHEET 6 OF 6

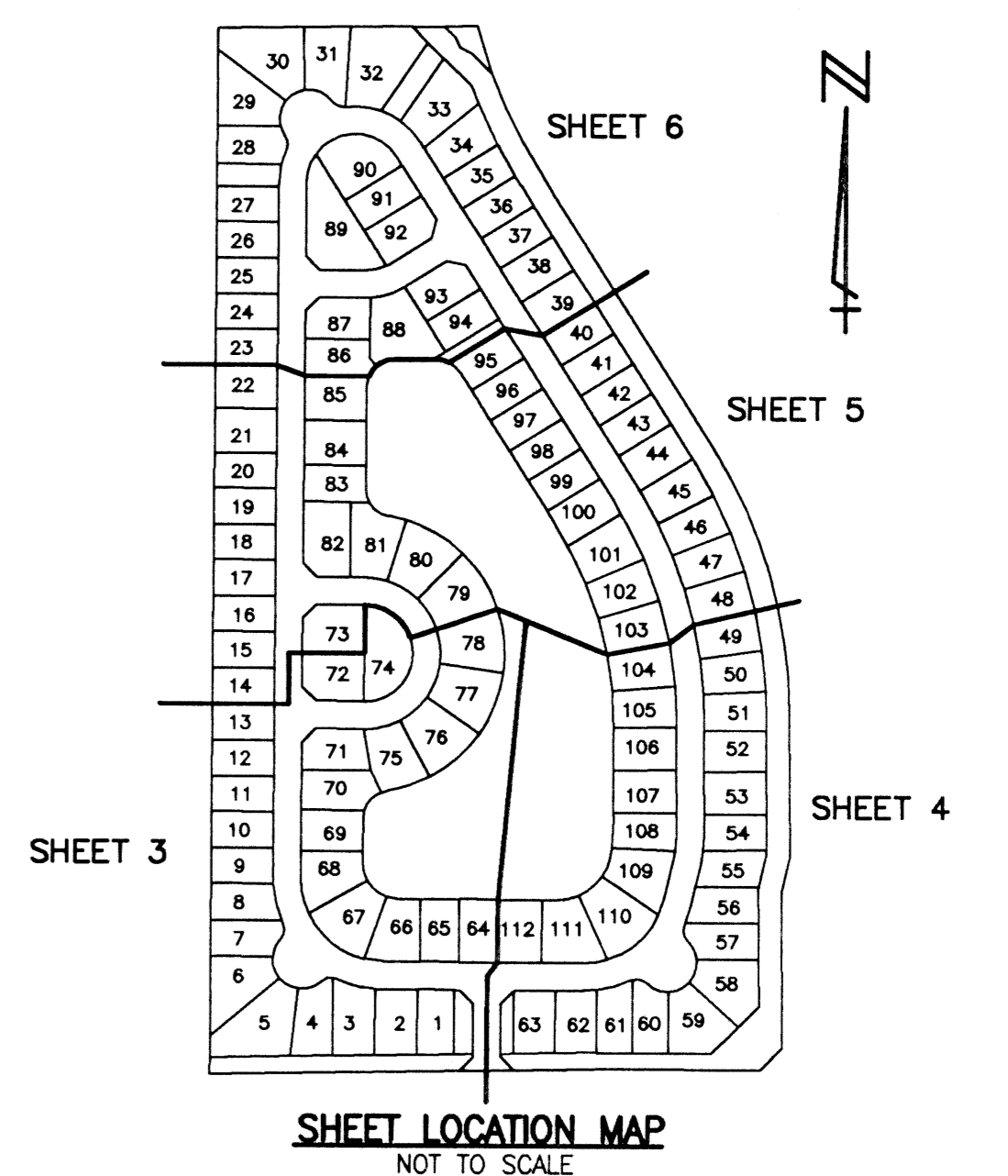


NOT PLATTED



- NOTES:
1. THE COORDINATES SHOWN HEREON ARE STATE PLANE GRID COORDINATES ACCORDING TO THE TRANSVERSE MERCATOR PROJECTION OF THE FLORIDA EAST ZONE, N.A.D. 83, PER THE 1990 ADJUSTMENT.
 2. THE LINEAR DIMENSIONS SHOWN HEREON ARE GROUND DISTANCES IN U.S. FEET AND DECIMAL PARTS THEREOF.
 3. THE GROUND DISTANCE TO GRID DISTANCE SCALE FACTOR IS 1.0000337 (GROUND DISTANCE x SCALE FACTOR = GRID DISTANCE).

- LEGEND
- L ARC LENGTH
 - AE ACCESS EASEMENT
 - BE BUFFER EASEMENT
 - Δ CENTRAL (DELTA) ANGLE
 - CH CHORD
 - DE DRAINAGE EASEMENT
 - FPL FLORIDA POWER & LIGHT
 - LAE LIMITED ACCESS EASEMENT
 - LME LAKE MAINTENANCE EASEMENT
 - LMAE LAKE MAINTENANCE ACCESS EASEMENT
 - LWDD LAKE WORTH DRAINAGE DISTRICT
 - (NR) NON-RADIAL
 - ORB OFFICIAL RECORD BOOK
 - PB PLAT BOOK
 - PG(S) PAGE(S)
 - PUD PLANNED UNIT OF DEVELOPMENT
 - R RADIAL
 - RAD RADIAL
 - (TYP) TYPICAL
 - UE UTILITY EASEMENT
 - PERMANENT REFERENCE MONUMENT
 - FOUND LB-048
 - PERMANENT REFERENCE MONUMENT
 - SET LB-048
 - PERMANENT CONTROL POINT
 - SET LB-048
 - ⊖ CENTERLINE



THIS INSTRUMENT WAS PREPARED BY MARY HANNA CLODFELTER, P.S.M. IN THE OFFICES OF MOCK, ROOS & ASSOCIATES, INC., 5720 CORPORATE WAY, WEST PALM BEACH, FLORIDA 33407.

SCALE: 1" = 40'	MOCK • ROOS ENGINEERS • SURVEYORS • PLANNERS	WINSTON TRAILS PARCEL TWENTY PART OF WINSTON TRAILS P.U.D. BEING A REPLAT OF TRACT G, "WINSTON TRAILS EAST" (PB 85, PGS 74 - 78)
P.A. NO.: 98008.20		
DATE: NOVEMBER 1999	5720 Corporate Way, West Palm Beach, Florida 33407 (561) 683-3113, fax 478-7248	SECTION 2, TOWNSHIP 45 SOUTH, RANGE 42 EAST PALM BEACH COUNTY, FLORIDA
DRAWING NO.: 45-42-02-137		