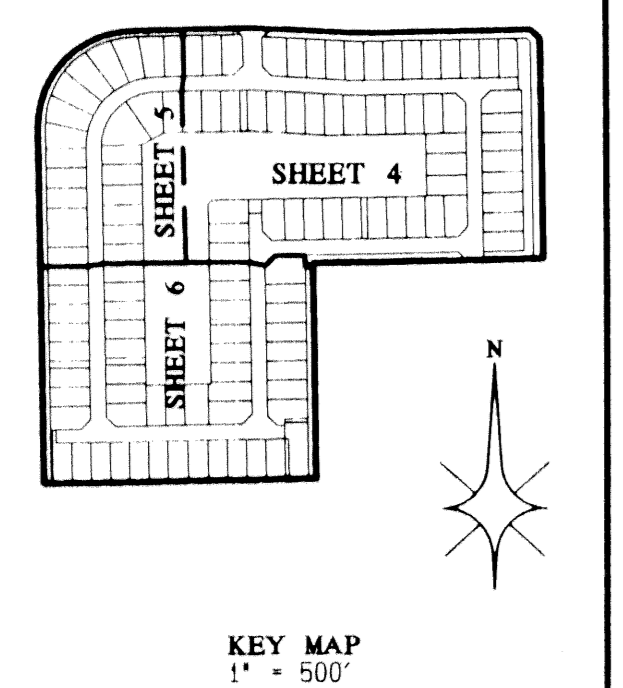


LESTER P.U.D. - PLAT FOUR

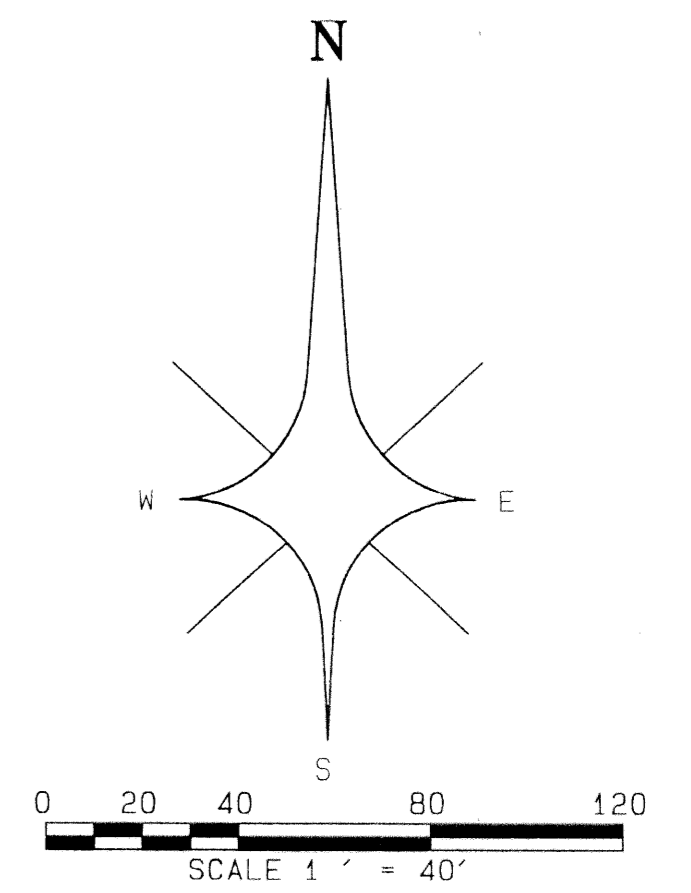
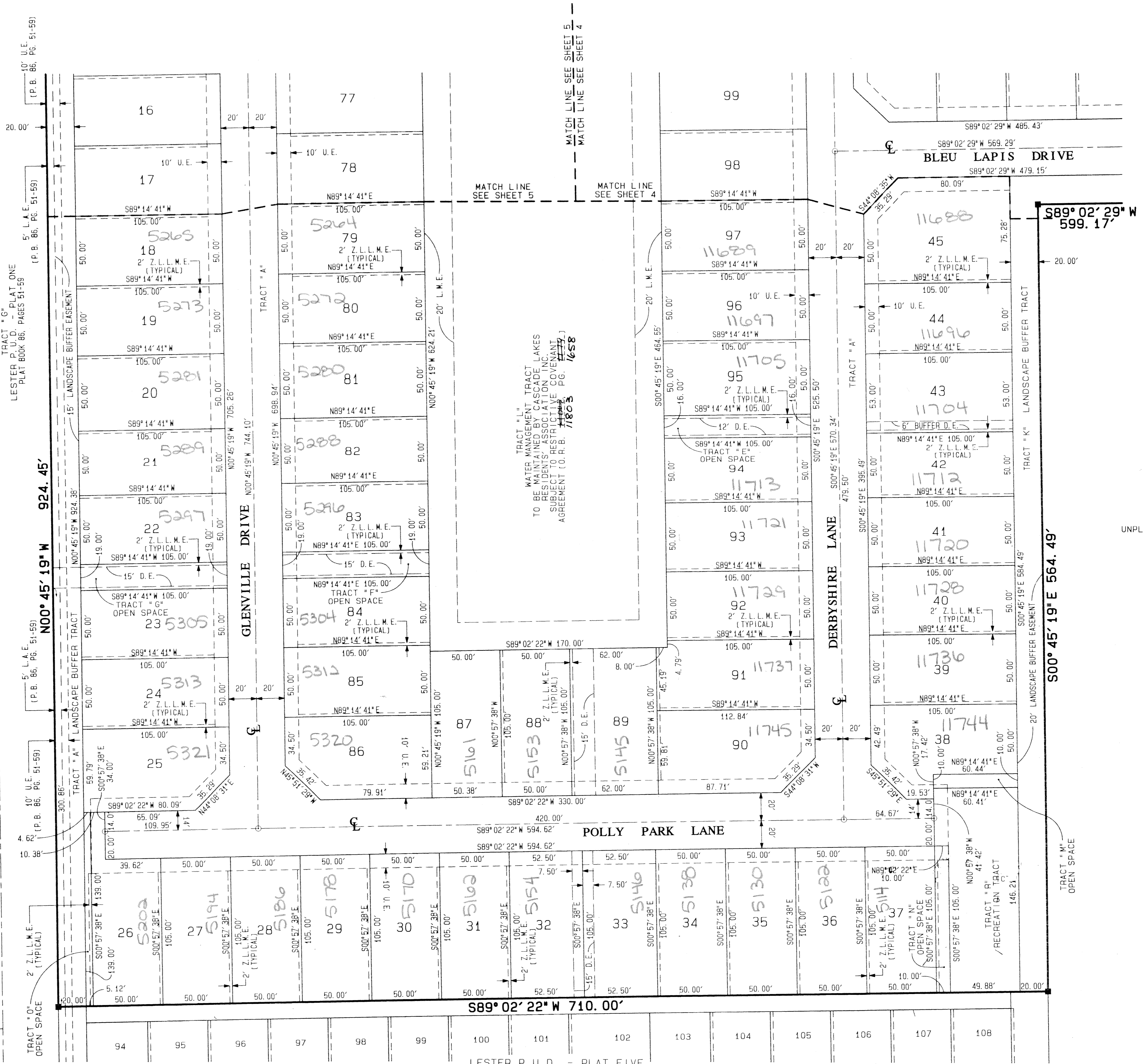
BEING A REPLAT OF PARCEL "C" & TRACT "D", LESTER P.U.D. - PLAT FIVE AS RECORDED IN PLAT BOOK 88, PAGES 78 THROUGH 83 OF THE PUBLIC RECORDS OF PALM BEACH COUNTY, FLORIDA. SITUATE IN THE SOUTHEAST ONE-QUARTER OF SECTION 35, TOWNSHIP 45 SOUTH, RANGE 42 EAST, PALM BEACH COUNTY, FLORIDA.
SHEET 6 OF 6
MAY, 2000

STATE OF FLORIDA } SS
COUNTY OF PALM BEACH }
THIS PLAT WAS FILED FOR RECORD AT _____ DAY OF THIS _____ AD, 20__ AND DULY RECORDED IN PLAT BOOK _____ ON PAGES _____ AND _____
DOROTHY H. WILKEN, CLERK
CIRCUIT COURT
BY: _____ DC



LESTER P.U.D. - PLAT THREE
PLAT BOOK 86, PAGES 186-191

CASCADE LAKES BOULEVARD



- LEGEND:**
- Δ = CENTRAL ANGLE/Delta
 - CL = CENTERLINE
 - CH = CHORD
 - DB = DEED BOOK
 - DE = DRAINAGE EASEMENT
 - FLPC = FLORIDA POWER AND LIGHT COMPANY
 - A = ARC LENGTH
 - LA = LIMITED ACCESS EASEMENT
 - LMAE = LAKE MAINTENANCE ACCESS EASEMENT
 - LMDE = LAKE MAINTENANCE EASEMENT
 - LNWD = LAKE NORTH DRAINAGE DISTRICT
 - N.R. = NON-RADIAL
 - N.T.S. = NOT TO SCALE
 - OR.B. = OFFICIAL RECORDS BOOK
 - P.B. = PLAT BOOK
 - P.G. = PAGE
 - P.O.B. = POINT OF BEGINNING
 - P.O.C. = POINT OF COMMENCEMENT
 - R. = RADIUS (RADIAL)
 - R.F.L. = RADIAL TO FRONT LOT LINE
 - R.R.L. = RADIAL TO REAR LOT LINE
 - R/W = RIGHT OF WAY
 - U.E. = UTILITY EASEMENT
 - W.C. = WITNESS CORNER
 - Z.L.L.M.E. = ZERO LOT LINE MAINTENANCE EASEMENT
 - PCP = PERMANENT CONTROL POINT (PCP)
PCP LB4820
 - PRM = PERMANENT REFERENCE MONUMENT (PRM)
SET PRM LB4820

STATION 08
SECTION 35
TOWNSHIP 45 S
RANGE 42 E
PLAT 131
LESTER P.U.D.
ZONING PUD
ZIP CODE 33437
FILE 959
PUD NAME

LESTER P.U.D. - PLAT FIVE
PLAT BOOK 88 PAGES 78-83

PROFESSIONAL SURVEYORS AND MAPPERS LB4820
ATLANTIC - CARIBBEAN MAPPING, INC.
3070 JUNG ROAD GREENACRES, FLORIDA 33467
(561) 964-7884; FAX (561) 964-1969