

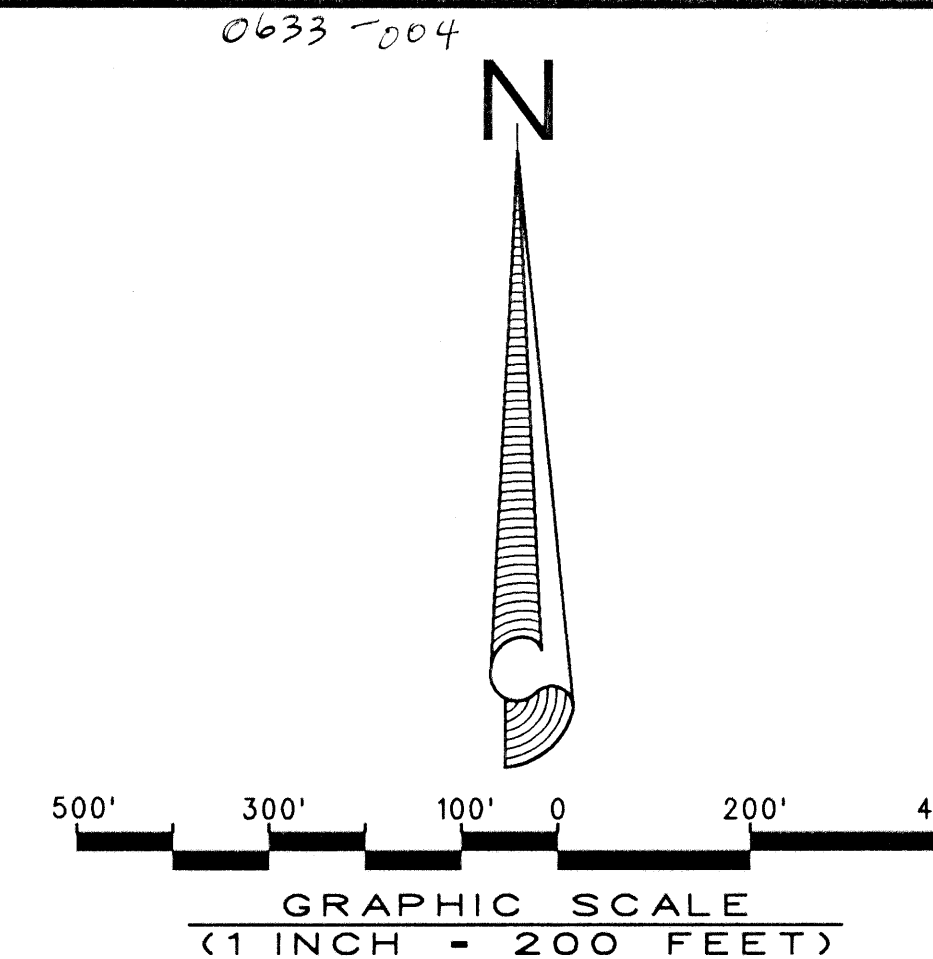
POLO TRACE II, GOLF COURSE

(A PART OF POLO TRACE II P.U.D.)

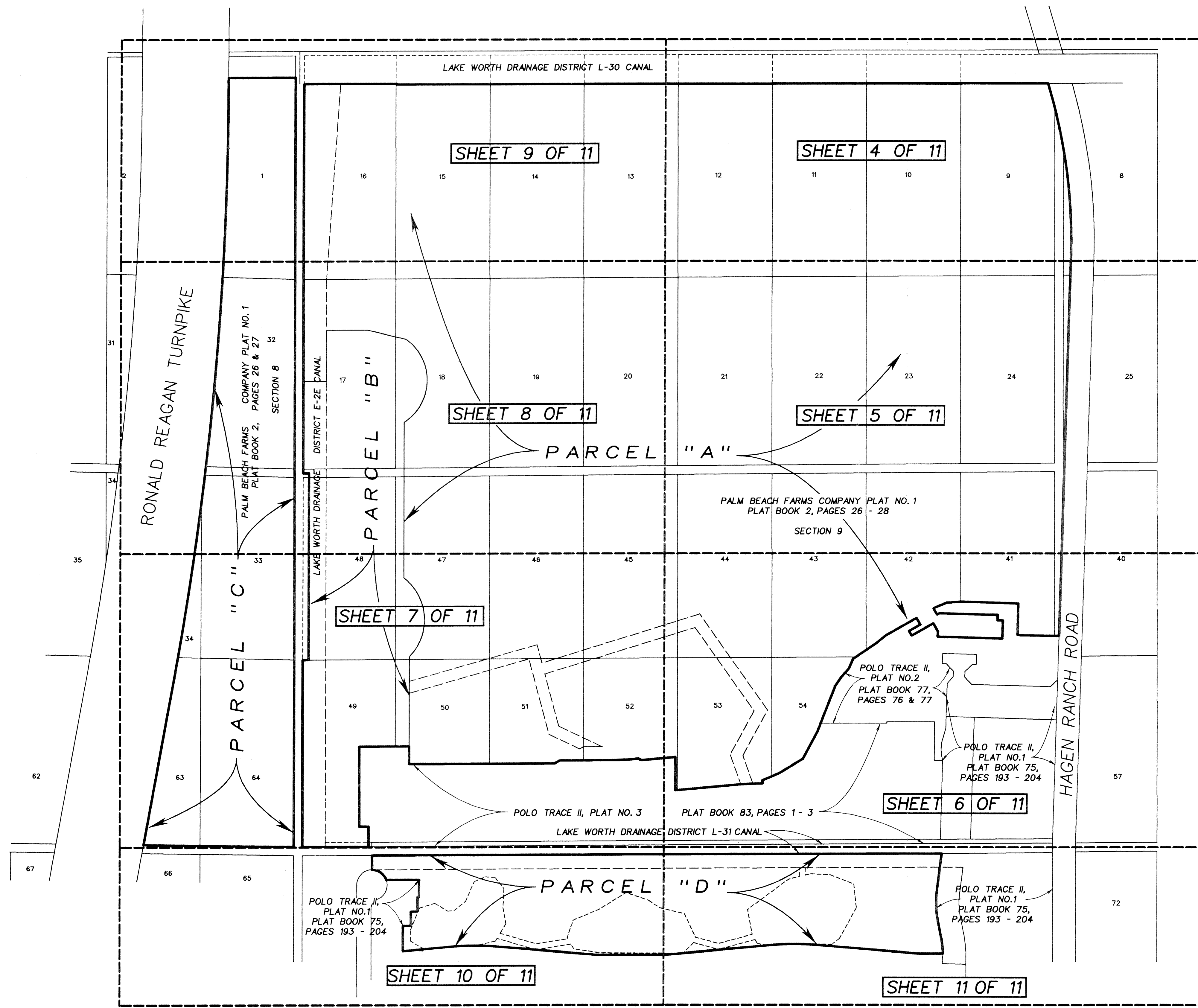
BEING A REPLAT OF A PORTION OF PALM BEACH FARMS COMPANY PLAT NO. 1,
ACCORDING TO THE PLAT THEREOF, AS RECORDED IN PLAT BOOK 2, PAGES 26 - 28,

ALSO BEING A REPLAT OF A PORTION OF POLO TRACE II, PLAT NO. 1
ACCORDING TO THE PLAT THEREOF, AS RECORDED IN PLAT BOOK 75, PAGES 193 - 204,
PUBLIC RECORDS OF PALM BEACH COUNTY, FLORIDA.

LYING IN SECTIONS 8 AND 9, TOWNSHIP 46 SOUTH, RANGE 42 EAST
PALM BEACH COUNTY, FLORIDA
JUNE, 2000 SHEET 3 OF 11



162



ABBREVIATIONS:

- C.M. = CONCRETE MONUMENT
- N.T. = NON-TANGENT
- D.R.B. = OFFICIAL RECORD BOOK
- P.B. = PLAT BOOK
- P.B.Co. = PALM BEACH COUNTY
- PG. = PAGE
- R.B. = RADIAL BEARING
- R/W = RIGHT-OF-WAY
- W.M.E. = WATER MANAGEMENT MAINTENANCE EASEMENT
- W.M.T. = WATER MANAGEMENT TRACT

KEY MAP

LIDBERG LAND SURVEYING, INC.
 675 West Indiantown Road, Suite 200,
 Jupiter, Florida 33458 TEL. 561-746-8454

CAD. K:\USTATION \ PLATS \ 75-193 \ GOLF \ KEY_SH03.DGN			
REF.			
FLD.	FB.	PG.	JOB 97-265(306)
OFF. CASASUS			DATE SEPT. 1998
CKD. D.C.L.	SHEET 3 OF 11		DWG. D97-265P

SURVEY DIVISION
 DATE 88
 FLOOD HAZARD ZONING PUD
 QUAD 451
 MAP CODE 33446
 PLAT NAME POLO TRACE II