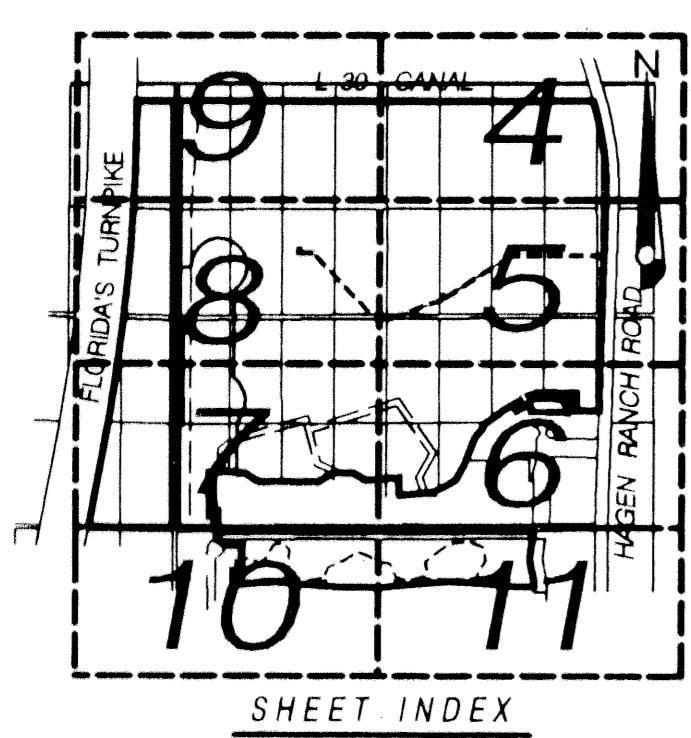
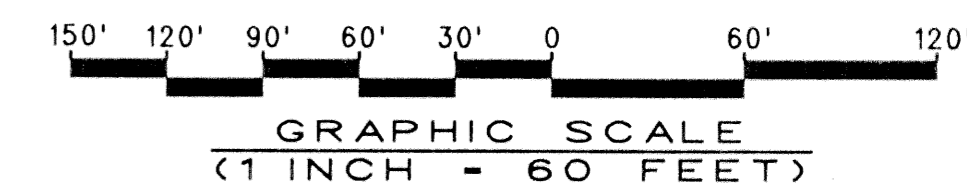
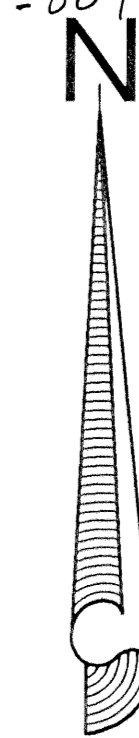


POLO TRACE II GOLF COURSE

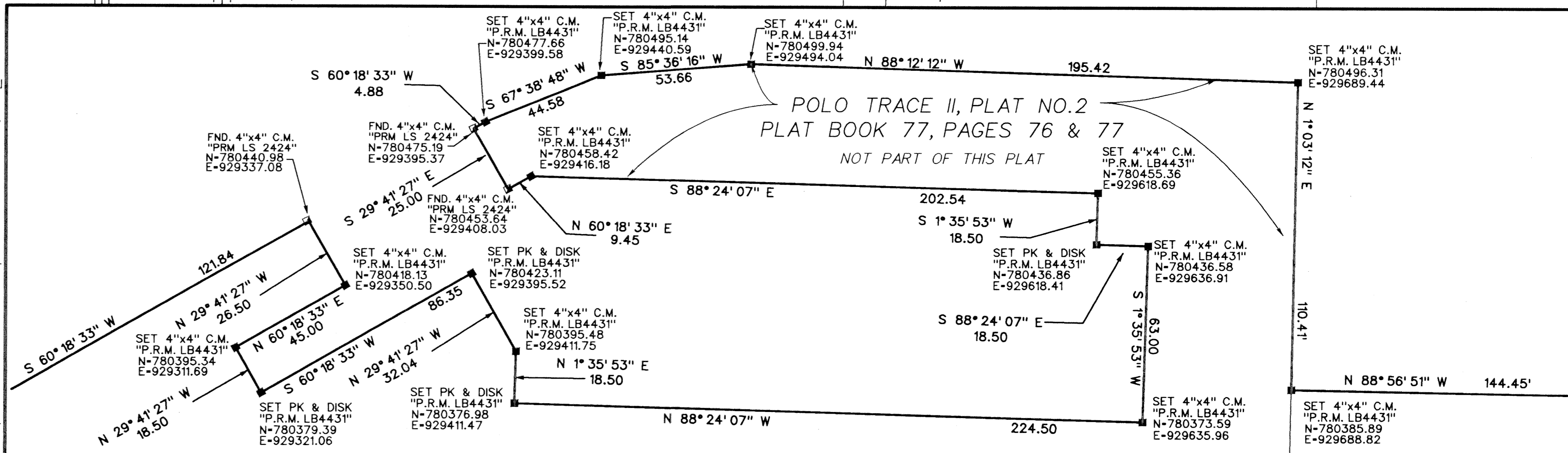
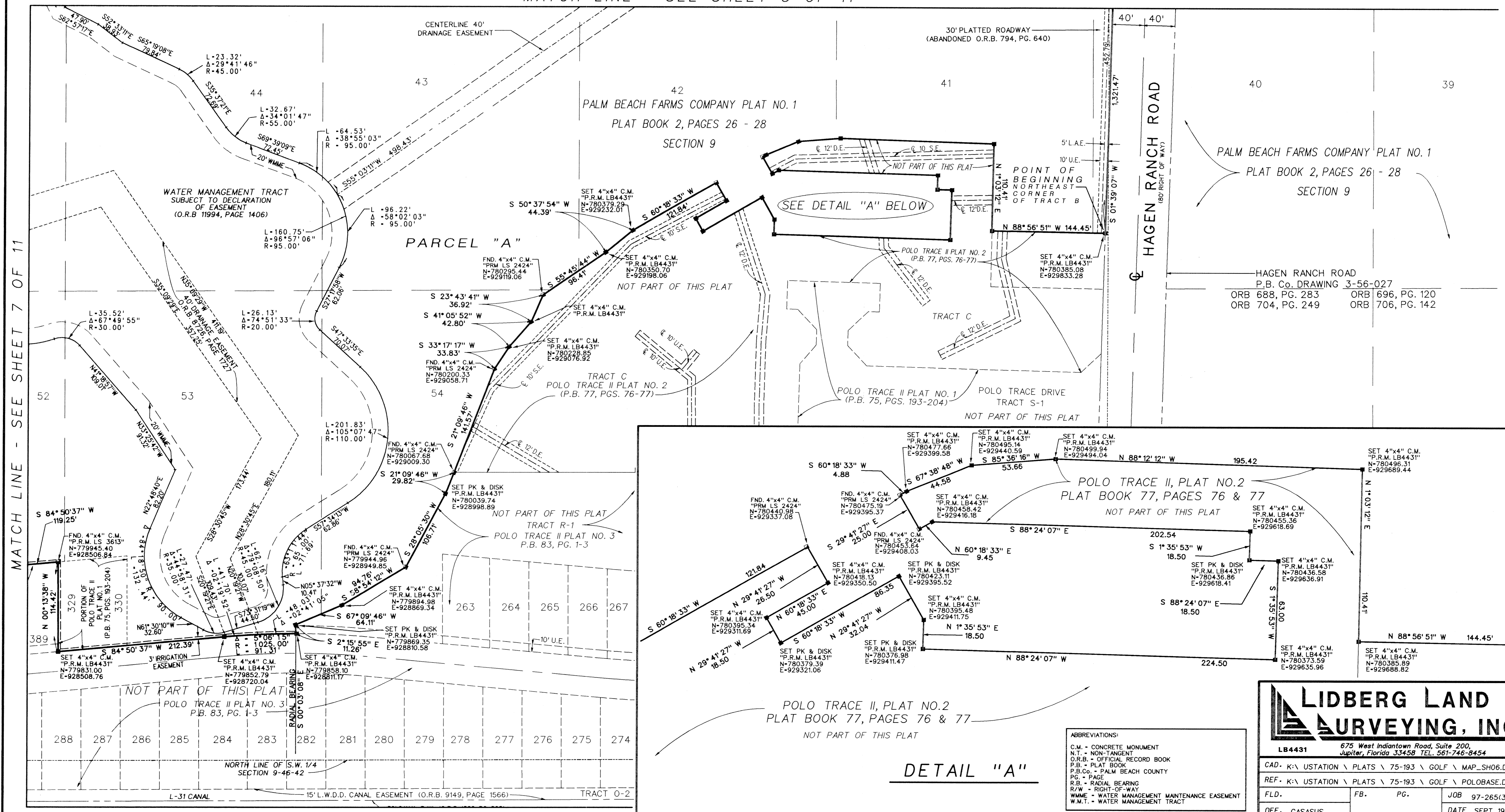
0633-004

165



(A PART OF POLO TRACE II P.U.D.)
 BEING A REPLAT OF A PORTION OF PALM BEACH FARMS COMPANY PLAT NO. 1,
 ACCORDING TO THE PLAT THEREOF, AS RECORDED IN PLAT BOOK 2, PAGES 26 - 28,
 ALSO BEING A REPLAT OF A PORTION OF POLO TRACE II, PLAT NO. 1
 ACCORDING TO THE PLAT THEREOF, AS RECORDED IN PLAT BOOK 75, PAGES 193 - 204,
 PUBLIC RECORDS OF PALM BEACH COUNTY, FLORIDA.
 LYING IN SECTIONS 8 AND 9, TOWNSHIP 46 SOUTH, RANGE 42 EAST
 PALM BEACH COUNTY, FLORIDA
 JUNE, 2000 SHEET 6 OF 11

MATCH LINE - SEE SHEET 5 OF 11



ABBREVIATIONS:

C.M.	- CONCRETE MONUMENT
N.T.	- NON-TANGENT
O.R.B.	- OFFICIAL RECORD BOOK
P.B.	- PLAT BOOK
P.B.Co.	- PALM BEACH COUNTY
P.C.	- PAGE
R.B.	- RADIAL BEARING
R/W	- RIGHT-OF-WAY
W.M.E.	- WATER MANAGEMENT MAINTENANCE EASEMENT
W.M.T.	- WATER MANAGEMENT TRACT

LIDBERG LAND SURVEYING, INC.
 675 West Indiantown Road, Suite 200,
 Jupiter, Florida 33458 TEL. 561-746-8454

CAD.	K:\USTATION \ PLATS \ 75-193 \ GOLF \ MAP_SH06.DGN				
REF.	K:\USTATION \ PLATS \ 75-193 \ GOLF \ POLOBASE.DGN				
FLD.	FB.	PG.	JOB	97-265(306)	
OFF.	CASASUS		DATE	SEPT. 1998	
CKD.	D.C.L.	SHEET	6 OF 11	DWG.	D97-265P

SUPERVISION GOLF COURSE
 DRAWN BY PAGE 165
 CHECKED BY FLOOD MAP#200A
 DATE 05/01 ZONING PUD
 T&E 459 ZIP CODE 33446
 PLOT NAME Polo Trace II

MATCH LINE - SEE SHEET 7 OF 11

MATCH LINE - SEE SHEET 11 OF 11

DETAIL "A"