

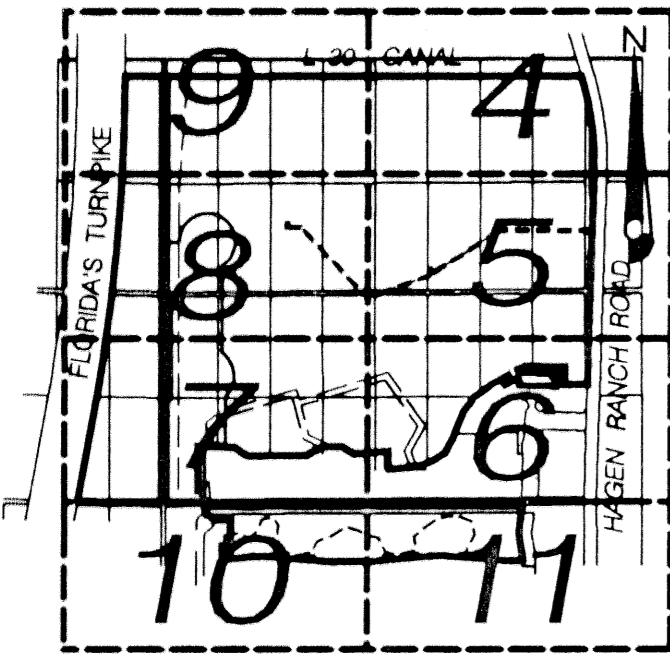
POLO TRACE II GOLF COURSE

0633-004

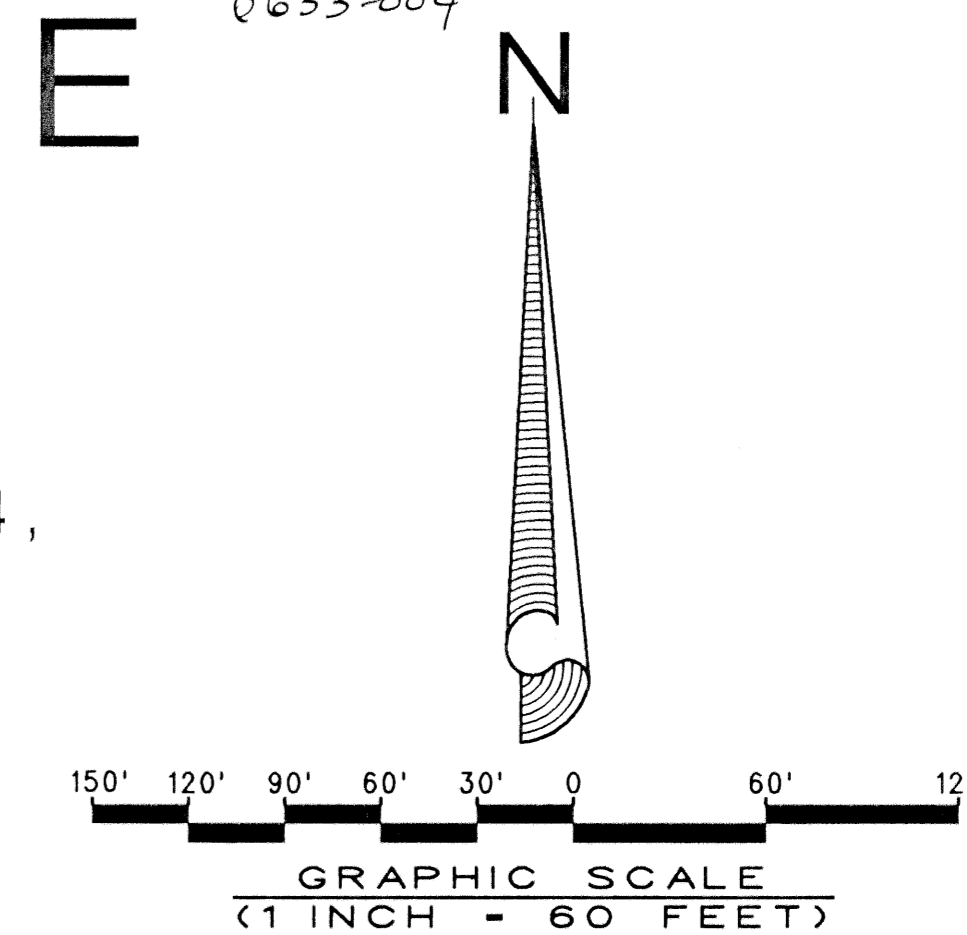
167

(A PART OF POLO TRACE II P.U.D.)

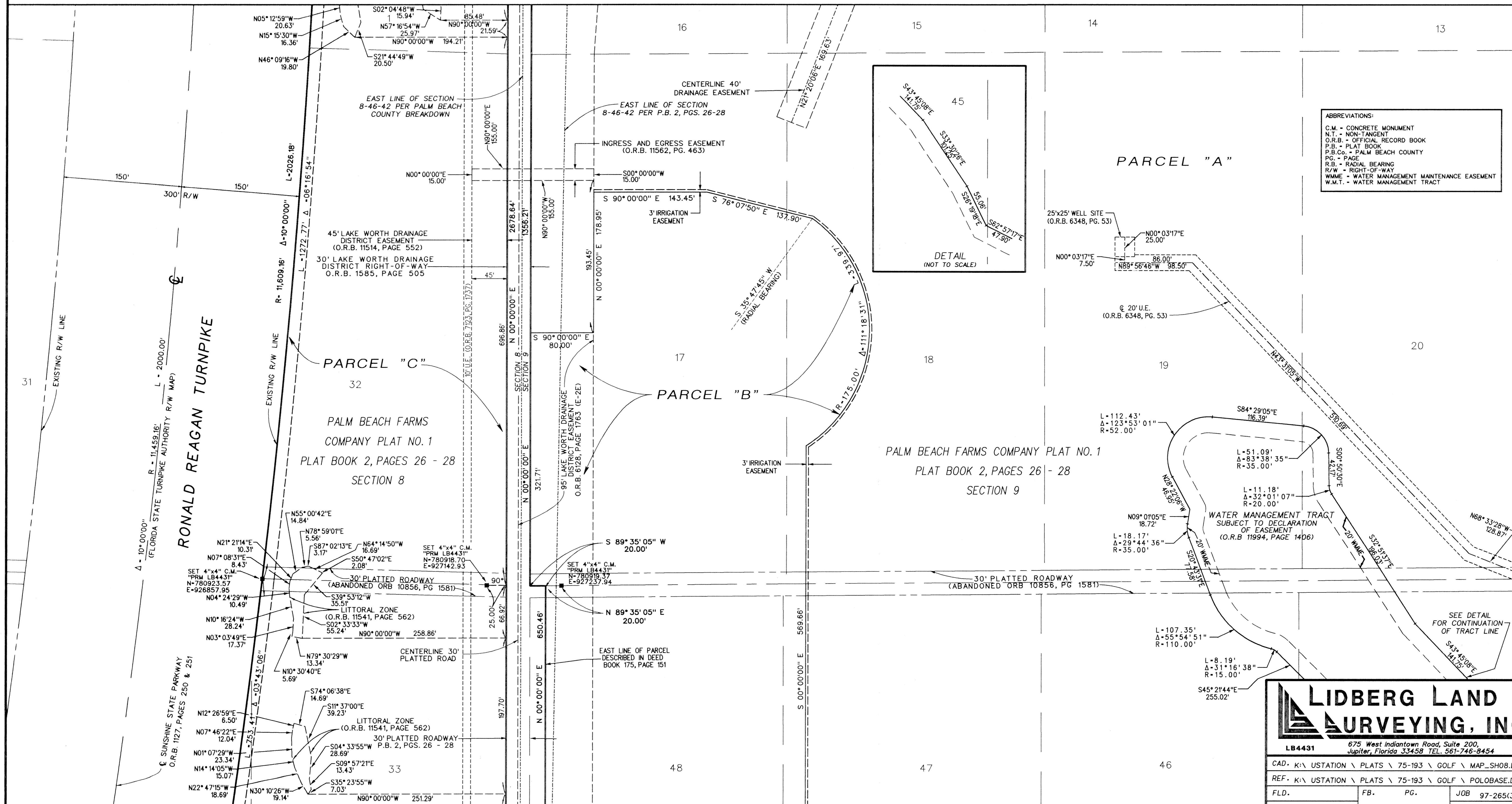
BEING A REPLAT OF A PORTION OF PALM BEACH FARMS COMPANY PLAT NO. 1,
 ACCORDING TO THE PLAT THEREOF, AS RECORDED IN PLAT BOOK 2, PAGES 26 - 28,
 ALSO BEING A REPLAT OF A PORTION OF POLO TRACE II, PLAT NO. 1
 ACCORDING TO THE PLAT THEREOF, AS RECORDED IN PLAT BOOK 75, PAGES 193 - 204,
 PUBLIC RECORDS OF PALM BEACH COUNTY, FLORIDA.
 LYING IN SECTIONS 8 AND 9, TOWNSHIP 46 SOUTH, RANGE 42 EAST
 PALM BEACH COUNTY, FLORIDA
 JUNE, 2000 SHEET 8 OF 11



SHEET INDEX



MATCH LINE - SEE SHEET 9 OF 11



MATCH LINE - SEE SHEET 7 OF 11

MATCH LINE - SEE SHEET 5 OF 11

POLO TRACE II
 GOLF COURSE
 SURVEYOR
 PAGE 167
 FLOOD MAP # 200A
 PLAT BOOK B
 ZONING P.U.D.
 PLAT # 31
 ZIP CODE 33446
 TAZ 4159
 FUD NAME POLO TRACE II

LIDBERG LAND SURVEYING, INC.

LB4431 675 West Indiantown Road, Suite 200, Jupiter, Florida 33458 TEL. 561-746-8454

CAD - K:\USTATION \ PLATS \ 75-193 \ GOLF \ MAP_SH08.DGN	
REF - K:\USTATION \ PLATS \ 75-193 \ GOLF \ POLOBASE.DGN	
FLD.	FB. PG. JOB 97-265(306)
OFF. CASASUS	DATE SEPT. 1998
CKD. D.C.L.	SHEET 8 OF 11 DWG. D97-265P