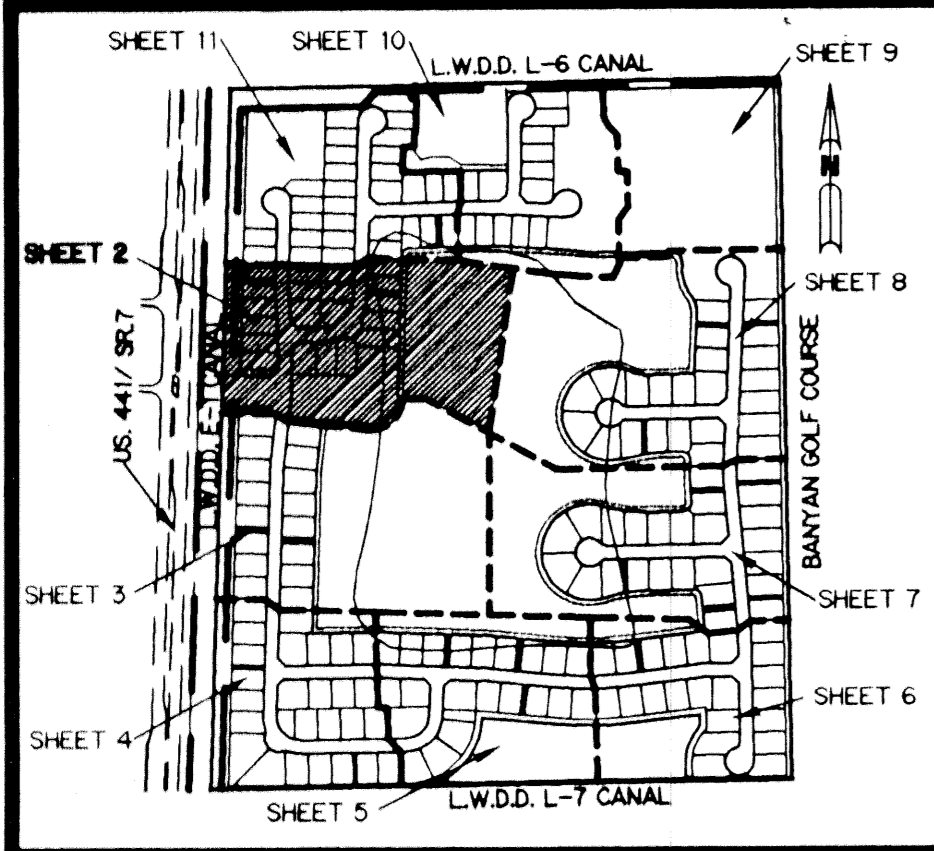


STONEHAVEN, P.U.D.

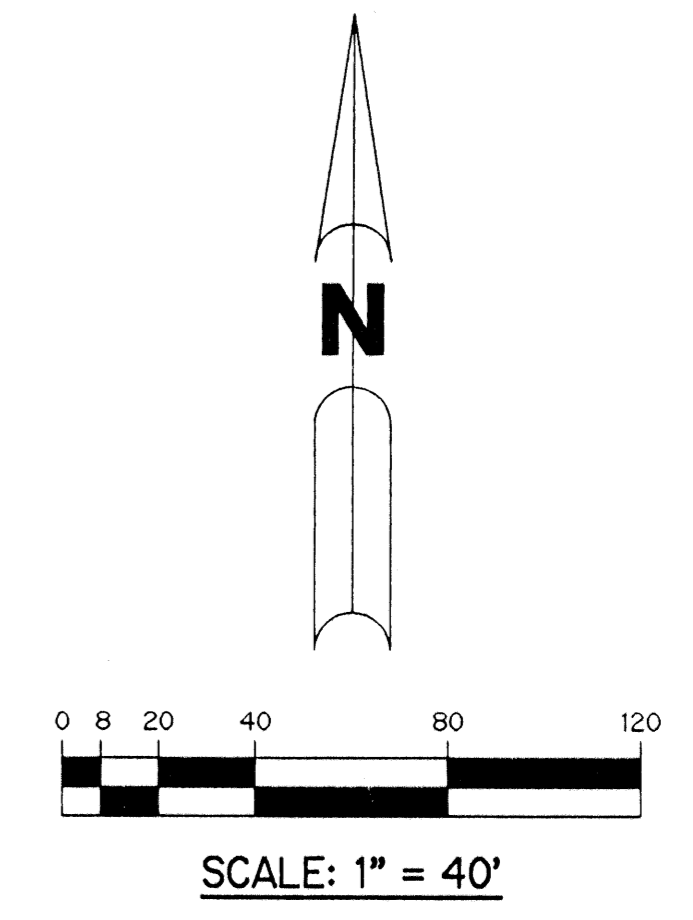
BEING A REPLAT OF A PORTION OF TRACTS 4, 5, 6, AND ALL OF TRACTS 7, 9, 16, 17, 18, 19, 20 AND 21, BLOCK 17, TOGETHER WITH THE PLATTED RIGHT-OF-WAY ADJACENT TO TRACTS 5, 4, 7, 8, 9, 16, 17, 18, 20 AND 21, BLOCK 17, ACCORDING TO THE PLAT OF PALM BEACH FARMS COMPANY PLAT NO. 3, AS RECORDED IN PLAT BOOK 2, PAGES 45 THROUGH 54, INCLUSIVE, ALL OF THE PUBLIC RECORDS OF PALM BEACH COUNTY, FLORIDA. LYING IN SECTION 7, TOWNSHIP 44 SOUTH, RANGE 42 EAST.

SHEET 2 OF 11 JANUARY, 2000

THIS INSTRUMENT PREPARED BY
WILBUR F. DIVINE, P.S.M. 4190, STATE OF FLORIDA
LAWSON, NOBLE AND WEBB, INC.
ENGINEERS PLANNERS SURVEYORS
420 COLUMBIA DRIVE
WEST PALM BEACH, FLORIDA 33409
LB-6674



KEY MAP
N.T.S.

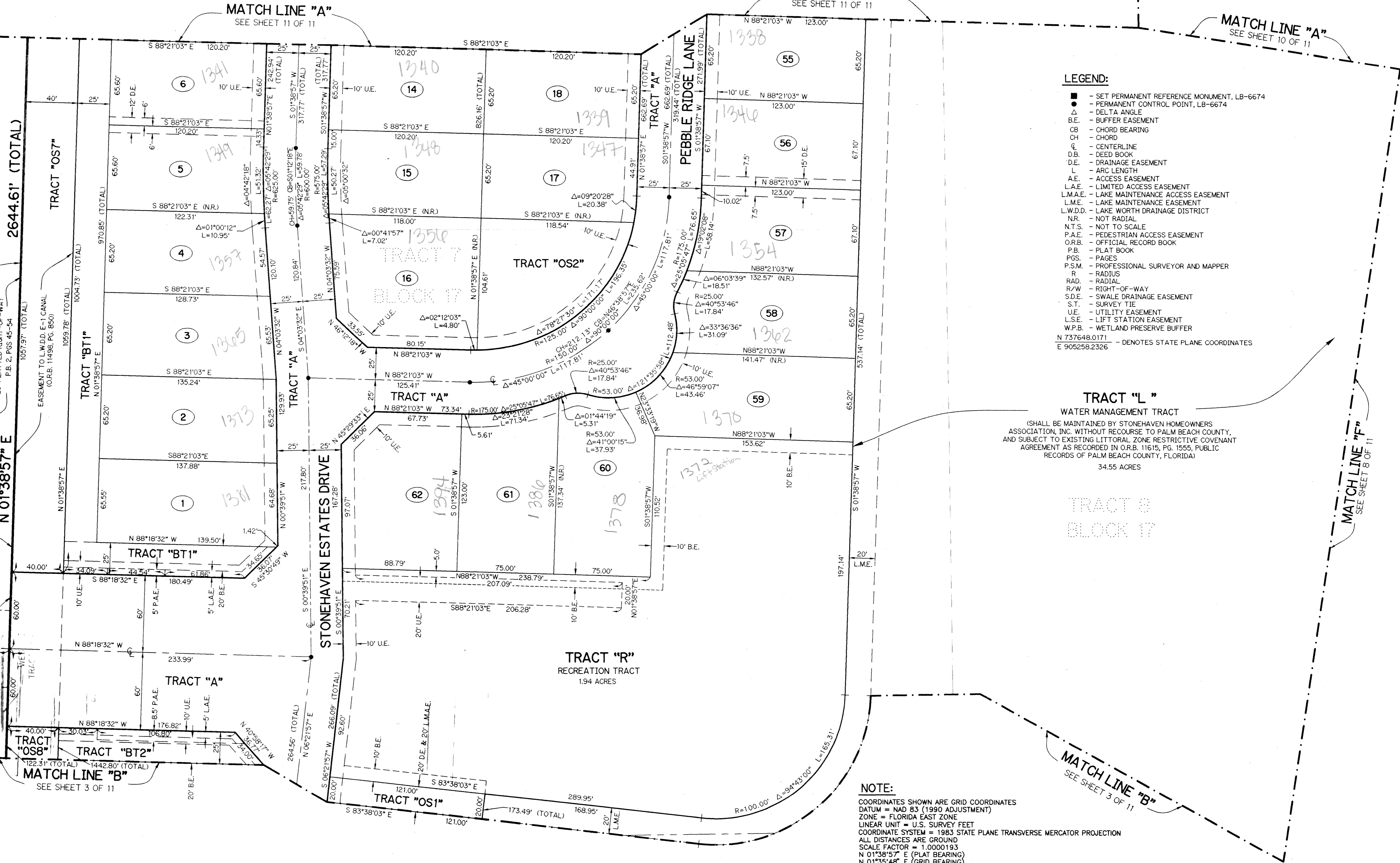


STATE ROAD 7 (U.S. 441)
WEST LINE SECTION 7-44-42
N 01°33'31" E

L.W.D.D. E-1 CANAL
(QUIT CLAIM ORB. 1585, PG. 508)
N 01°38'57" E

F.D.O.T. DRIVEWAY CONNECTION
PERMIT NO. 99A 496 0095
O.R.B. 11912, PAGE 1508
WEST LINE SECTION 7-44-42
N 01°33'31" E

L.W.D.D. BRIDGE PERMIT
NO. 99-2852803
O.R.B. 11907, PAGE 169
WEST LINE OF TRACT 7, BLOCK 17
N 01°38'57" E



- LEGEND:**
- - SET PERMANENT REFERENCE MONUMENT, LB-6674
 - - PERMANENT CONTROL POINT, LB-6674
 - △ - DELTA ANGLE
 - B.E. - BUFFER EASEMENT
 - CB - CHORD BEARING
 - CH - CHORD
 - C - CENTERLINE
 - DB - DEED BOOK
 - D.E. - DRAINAGE EASEMENT
 - L - ARC LENGTH
 - A.E. - ACCESS EASEMENT
 - L.A.E. - LIMITED ACCESS EASEMENT
 - L.M.A.E. - LAKE MAINTENANCE ACCESS EASEMENT
 - L.M.E. - LAKE MAINTENANCE EASEMENT
 - L.W.D.D. - LAKE WORTH DRAINAGE DISTRICT
 - N.R. - NOT RADIAL
 - N.T.S. - NOT TO SCALE
 - P.A.E. - PEDESTRIAN ACCESS EASEMENT
 - O.R.B. - OFFICIAL RECORD BOOK
 - P.B. - PLAT BOOK
 - PGS. - PAGES
 - P.S.M. - PROFESSIONAL SURVEYOR AND MAPPER
 - R - RADIUS
 - RAD. - RADIAL
 - R/W - RIGHT-OF-WAY
 - S.D.E. - SWALE DRAINAGE EASEMENT
 - S.T. - SURVEY TIE
 - U.E. - UTILITY EASEMENT
 - L.S.E. - LIFT STATION EASEMENT
 - W.F.B. - WETLAND PRESERVE BUFFER
- N 737648.0171 - DENOTES STATE PLANE COORDINATES
E 905258.2326

TRACT "L"
WATER MANAGEMENT TRACT
(SHALL BE MAINTAINED BY STONEHAVEN HOMEOWNERS ASSOCIATION, INC. WITHOUT RECOURSE TO PALM BEACH COUNTY, AND SUBJECT TO EXISTING LITTORAL ZONE RESTRICTIVE COVENANT AGREEMENT AS RECORDED IN O.R.B. 11615, PG. 1555, PUBLIC RECORDS OF PALM BEACH COUNTY, FLORIDA)
34.55 ACRES

TRACT 8
BLOCK 17

NOTE:
COORDINATES SHOWN ARE GRID COORDINATES
DATUM = NAD 83 (1990 ADJUSTMENT)
ZONE = FLORIDA EAST ZONE
LINEAR UNIT = U.S. SURVEY FEET
COORDINATE SYSTEM = 1983 STATE PLANE TRANSVERSE MERCATOR PROJECTION
ALL DISTANCES ARE GROUND
SCALE FACTOR = 1.0000193
N 01°38'57" E (PLAT BEARING)
N 01°35'48" E (GRID BEARING)
(PLAT TO GRID 00°03'09" COUNTERCLOCKWISE)

SUBDIVISION Stonehaven, P.U.D.
PAGE 2
BLOCK 8A
FLOOD HAZARD ZONING P.D.D.
QUAD # 47
SE
TAX ID 101
PUD NAME