

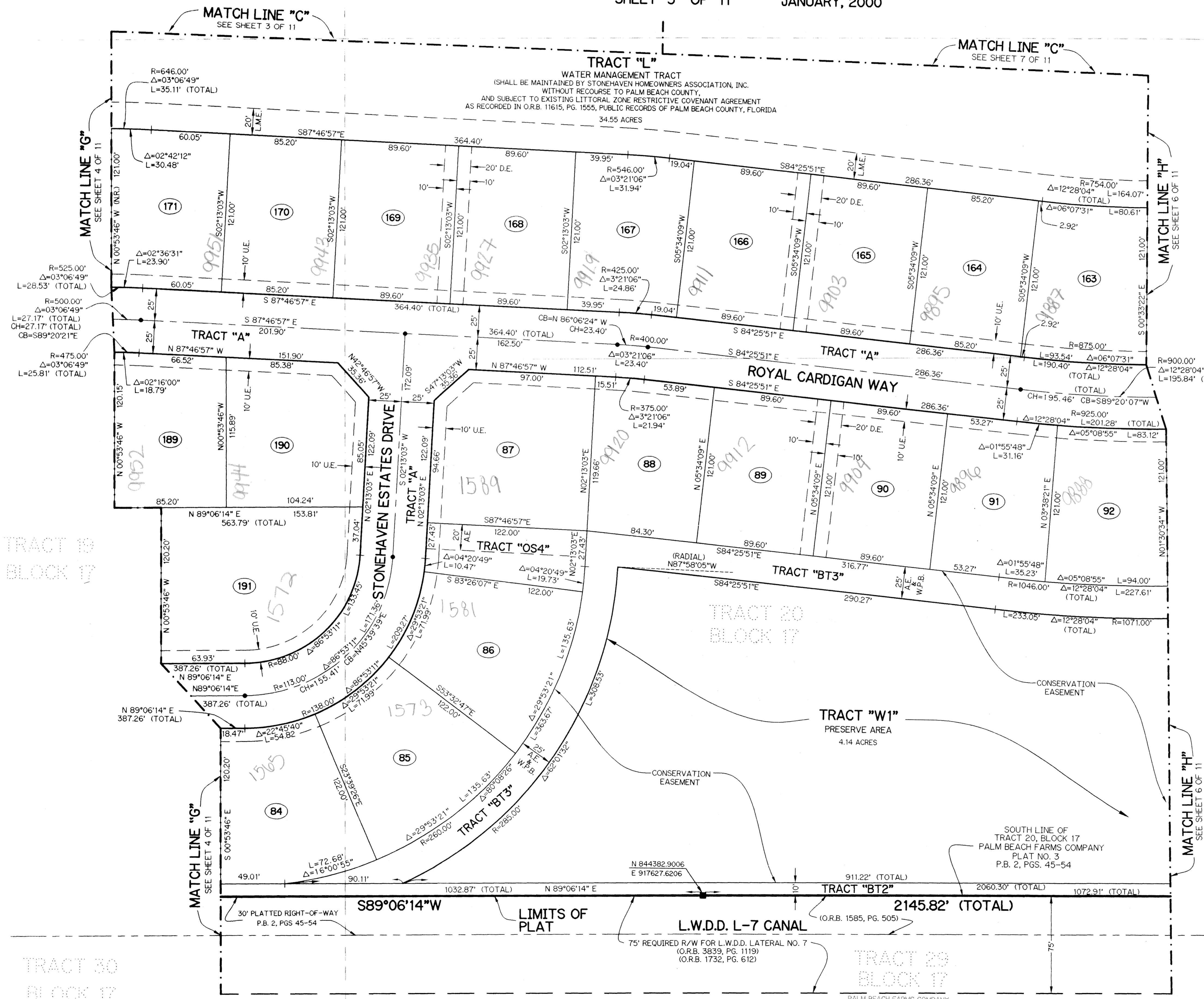
STONEHAVEN, P.U.D.

BEING A REPLAT OF A PORTION OF TRACTS 4, 5, 6, AND ALL OF TRACTS 7, 9, 16, 17, 18, 19, 20 AND 21, BLOCK 17, TOGETHER WITH THE PLATTED RIGHT-OF-WAY ADJACENT TO TRACTS 5, 4, 7, 8, 9, 16, 17, 18, 20 AND 21, BLOCK 17, ACCORDING TO THE PLAT OF PALM BEACH FARMS COMPANY PLAT NO. 3, AS RECORDED IN PLAT BOOK 2, PAGES 45 THROUGH 54, INCLUSIVE, ALL OF THE PUBLIC RECORDS OF PALM BEACH COUNTY, FLORIDA. LYING IN SECTION 7, TOWNSHIP 44 SOUTH, RANGE 42 EAST.

SHEET 5 OF 11 JANUARY, 2000

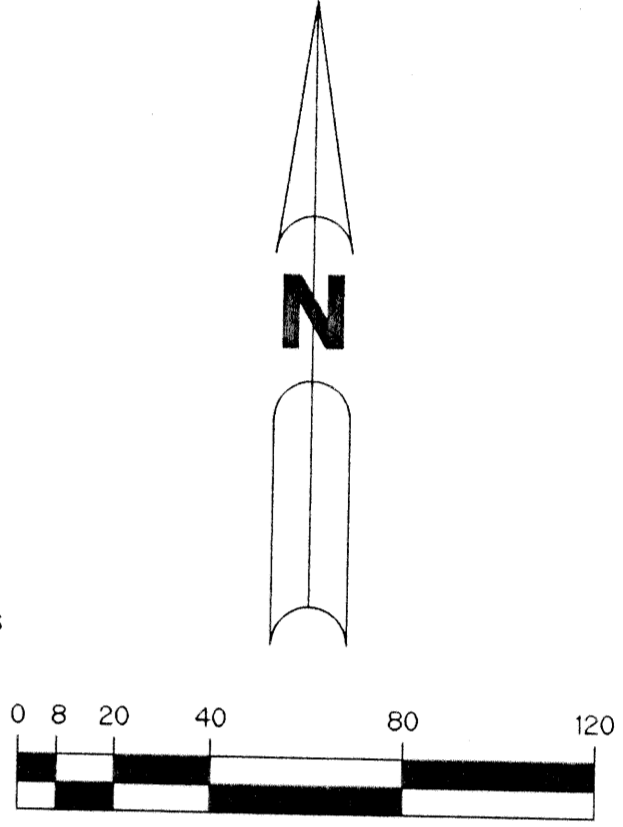
0709-001

5



LEGEND:

- - SET PERMANENT REFERENCE MONUMENT, LB-6674
- - PERMANENT CONTROL POINT, LB-6674
- △ - DELTA ANGLE
- B.E. - BUFFER EASEMENT
- CB - CHORD BEARING
- CH - CHORD
- C - CENTERLINE
- D.B. - DEED BOOK
- D.E. - DRAINAGE EASEMENT
- L - ARC LENGTH
- A.E. - ACCESS EASEMENT
- L.A.E. - LIMITED ACCESS EASEMENT
- L.M.A.E. - LAKE MAINTENANCE ACCESS EASEMENT
- L.M.E. - LAKE MAINTENANCE EASEMENT
- L.W.D.D. - LAKE WORTH DRAINAGE DISTRICT
- N.R. - NOT RADIAL
- N.T.S. - NOT TO SCALE
- O.E. - OVERHANG EASEMENT
- O.R.B. - OFFICIAL RECORD BOOK
- P.B. - PLAT BOOK
- P.G.S. - PAGES
- P.S.M. - PROFESSIONAL SURVEYOR AND MAPPER
- R - RADIUS
- RAD. - RADIAL
- R/W - RIGHT-OF-WAY
- S.D.E. - SWALE DRAINAGE EASEMENT
- S.T. - SURVEY TIE
- U.E. - UTILITY EASEMENT
- L.S.E. - LIFT STATION EASEMENT
- W.P.B. - WETLAND PRESERVE BUFFER
- N 737648.0171 - DENOTES STATE PLANE COORDINATES
- E 905258.2326



TRACT 21
BLOCK 17

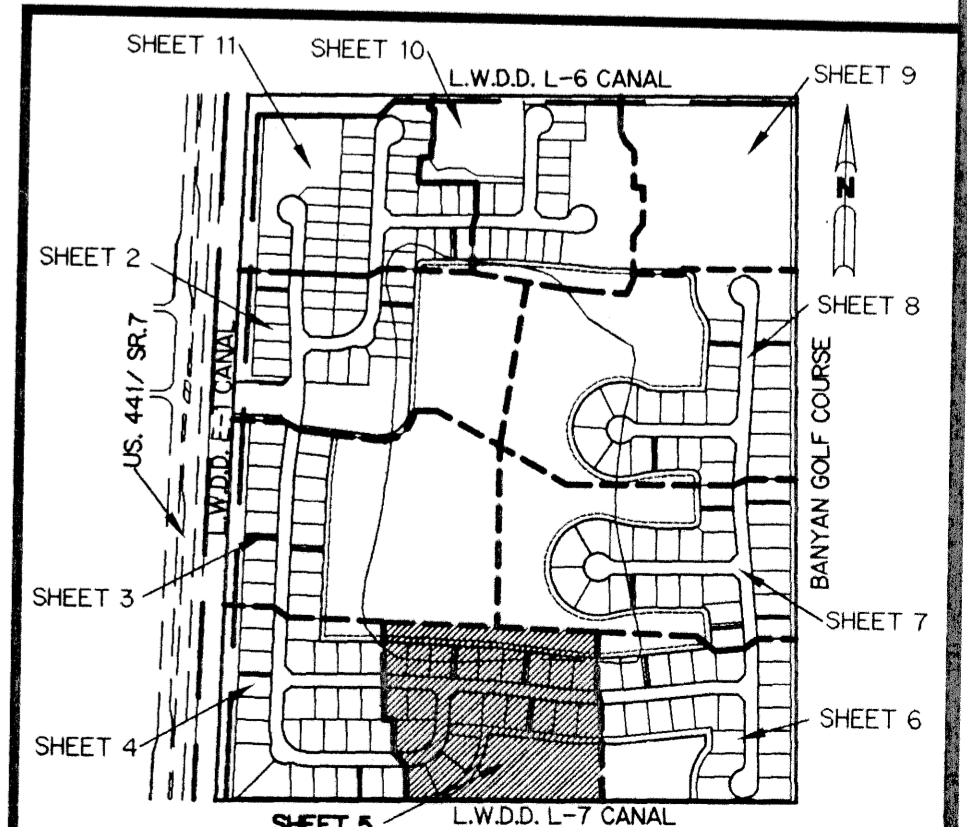
30' PLATTED RIGHT-OF-WAY
VACATED PER UNITED STATES DISTRICT
COURT, CASE NO. 88-8111-CIV-GONZALEZ

NOTE:

COORDINATES SHOWN ARE GRID COORDINATES
DATUM = NAD 83 (1980 ADJUSTMENT)
ZONE = FLORIDA EAST ZONE
LINEAR UNIT = U.S. SURVEY FEET
COORDINATE SYSTEM = 1983 STATE PLANE TRANSVERSE MERCATOR PROJECTION
ALL DISTANCES ARE GROUND
SCALE FACTOR = 1.0000193
N 01°38'57" E (PLAT BEARING)
N 01°35'48" E (GRID BEARING)
(PLAT TO GRID 00°03'09" COUNTERCLOCKWISE)

THIS INSTRUMENT PREPARED BY
WILBUR F. DIVINE, P.S.M. 4190, STATE OF FLORIDA
LAWSON, NOBLE AND WEBB, INC.
ENGINEERS PLANNERS SURVEYORS
420 COLUMBIA DRIVE
WEST PALM BEACH, FLORIDA 33409
LB-6674

KEY MAP



SUBDIVISION Stonehaven P.U.D.
PAGE 5
FLOOD MAP # 10DA
FLOOD ZONE PDD
QUAD # 47
ZIP CODE 33411
TAZ 10 1
PUD NAME

TRACT 30
BLOCK 17

TRACT 29
BLOCK 17

TRACT 28
BLOCK 17