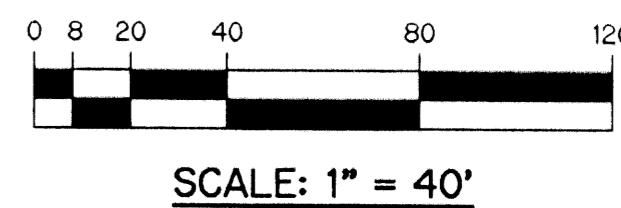
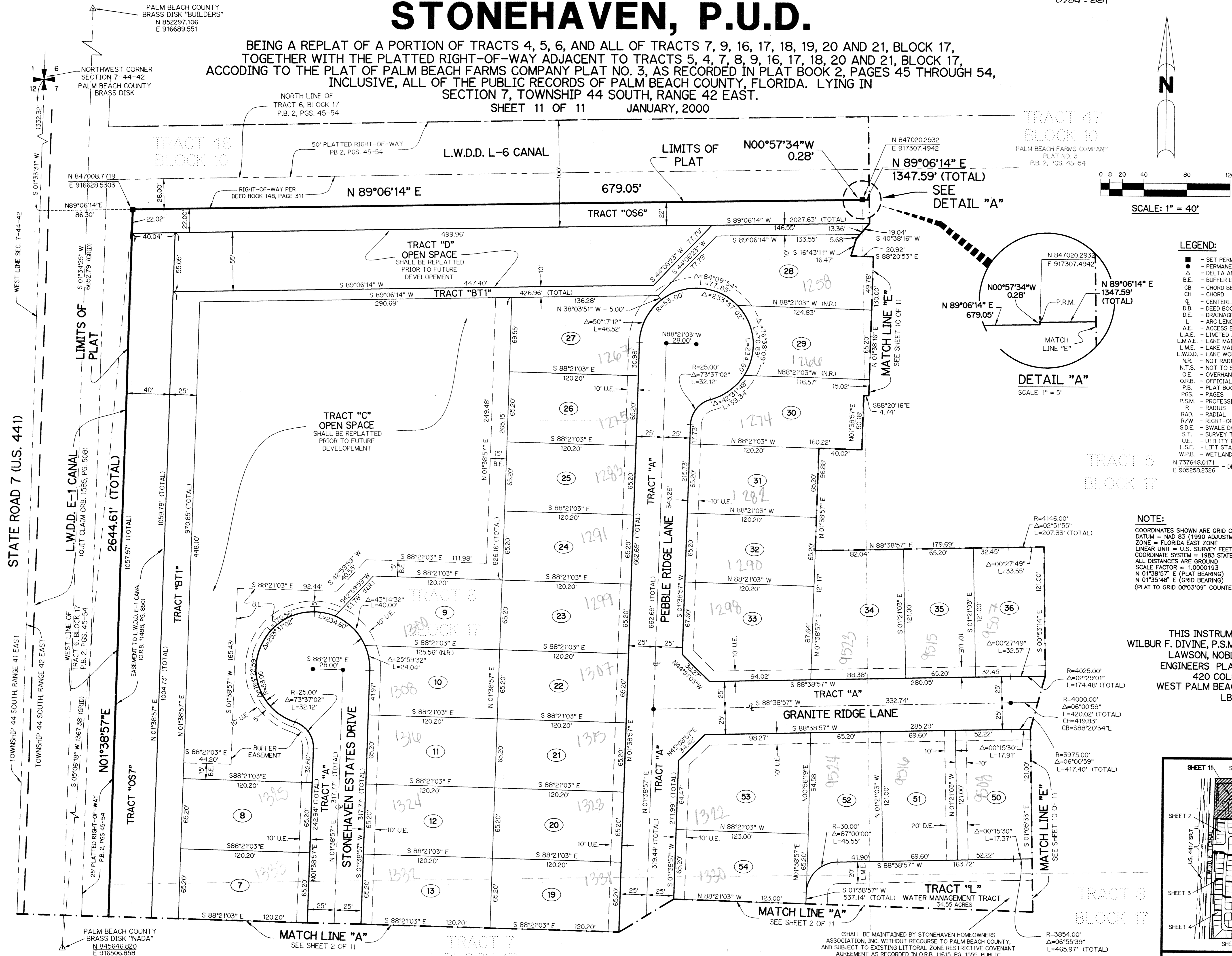


STONEHAVEN, P.U.D.

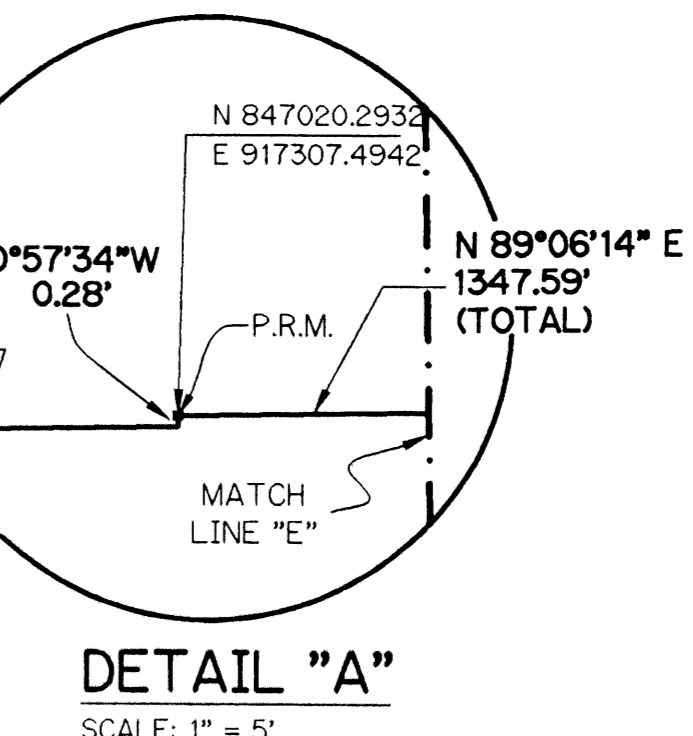
BEING A REPLAT OF A PORTION OF TRACTS 4, 5, 6, AND ALL OF TRACTS 7, 9, 16, 17, 18, 19, 20 AND 21, BLOCK 17, TOGETHER WITH THE PLATTED RIGHT-OF-WAY ADJACENT TO TRACTS 5, 4, 7, 8, 9, 16, 17, 18, 20 AND 21, BLOCK 17, ACCORDING TO THE PLAT OF PALM BEACH FARMS COMPANY PLAT NO. 3, AS RECORDED IN PLAT BOOK 2, PAGES 45 THROUGH 54, INCLUSIVE, ALL OF THE PUBLIC RECORDS OF PALM BEACH COUNTY, FLORIDA. LYING IN SECTION 7, TOWNSHIP 44 SOUTH, RANGE 42 EAST.
SHEET 11 OF 11 JANUARY, 2000

0709 - 001

11



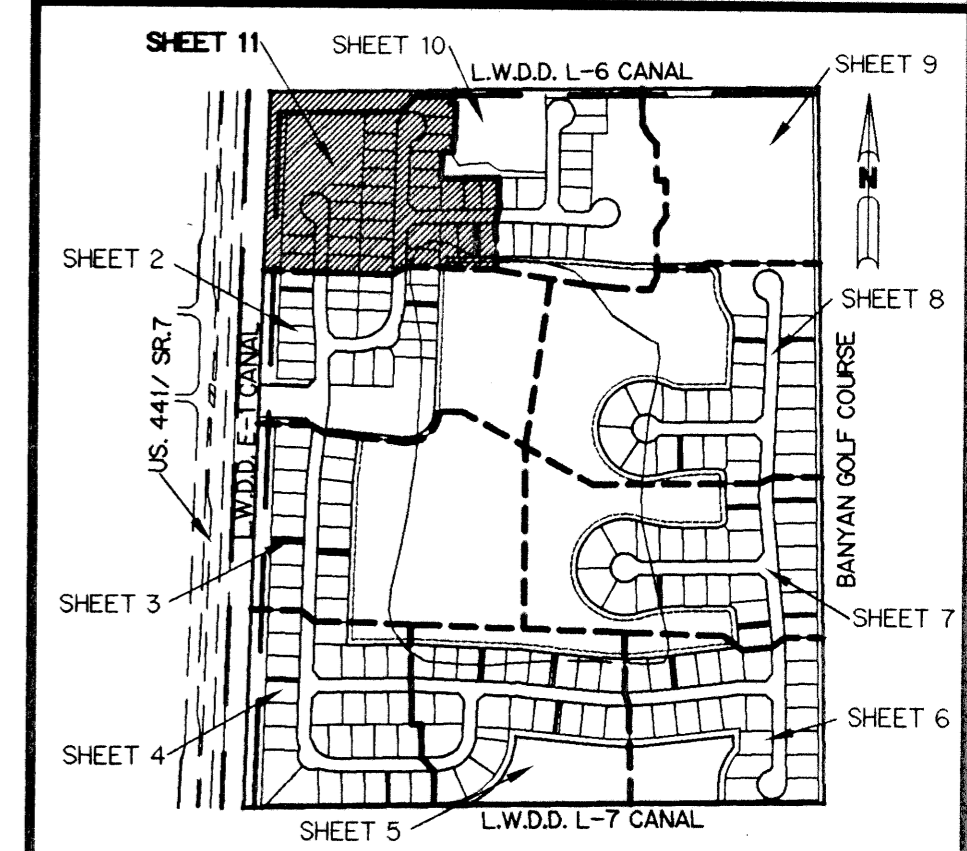
- LEGEND:**
- - SET PERMANENT REFERENCE MONUMENT, LB-6674
 - - PERMANENT CONTROL POINT, LB-6674
 - Δ - DELTA ANGLE
 - BE - BUFFER EASEMENT
 - CB - CHORD BEARING
 - CH - CHORD
 - C - CENTERLINE
 - D.B. - DEED BOOK
 - D.E. - DRAINAGE EASEMENT
 - L - ARC LENGTH
 - A.E. - ACCESS EASEMENT
 - L.A.E. - LIMITED ACCESS EASEMENT
 - L.M.A.E. - LAKE MAINTENANCE ACCESS EASEMENT
 - L.M.E. - LAKE MAINTENANCE EASEMENT
 - L.W.D.D. - LAKE WORTH DRAINAGE DISTRICT
 - N.R. - NOT RADIAL
 - N.T.S. - NOT TO SCALE
 - OE - OVERHANG EASEMENT
 - OR.B. - OFFICIAL RECORD BOOK
 - P.B. - PLAT BOOK
 - PGS. - PAGES
 - P.S.M. - PROFESSIONAL SURVEYOR AND MAPPER
 - R - RADIUS
 - RAD. - RADIAL
 - R/W - RIGHT-OF-WAY
 - S.D.E. - SWALE DRAINAGE EASEMENT
 - S.T. - SURVEY TIE
 - U.E. - UTILITY EASEMENT
 - L.S.E. - LIFT STATION EASEMENT
 - W.P.B. - WETLAND PRESERVE BUFFER
 - N 737648.0171 E 905258.2326 - DENOTES STATE PLANE COORDINATES



NOTE:
COORDINATES SHOWN ARE GRID COORDINATES
DATUM = NAD 83 (1990 ADJUSTMENT)
ZONE = FLORIDA EAST ZONE
LINEAR UNIT = U.S. SURVEY FEET
COORDINATE SYSTEM = 1983 STATE PLANE TRANSVERSE MERCATOR PROJECTION
ALL DISTANCES ARE GROUND
SCALE FACTOR = 1.0000193
N 01°38'57" E (PLAT BEARING)
N 01°35'48" E (GRID BEARING)
(PLAT TO GRID 00°03'09" COUNTERCLOCKWISE)

THIS INSTRUMENT PREPARED BY
WILBUR F. DIVINE, P.S.M. 4190, STATE OF FLORIDA
LAWSON, NOBLE AND WEBB, INC.
ENGINEERS PLANNERS SURVEYORS
420 COLUMBIA DRIVE
WEST PALM BEACH, FLORIDA 33409
LB-6674

KEY MAP
N.T.S.



SUBDIVISION Stonehaven P.U.D.
PAGE 11
BOOK 09
FLOOD ZONE B
ZONING PDD
QUAD # 47
SE
TAZ 101
PUD NAME

(SHALL BE MAINTAINED BY STONEHAVEN HOMEOWNERS ASSOCIATION, INC. WITHOUT RECOURSE TO PALM BEACH COUNTY, AND SUBJECT TO EXISTING LITTORAL ZONE RESTRICTIVE COVENANT AGREEMENT AS RECORDED IN O.R.B. 11615, PG. 1555, PUBLIC RECORDS OF PALM BEACH COUNTY, FLORIDA)