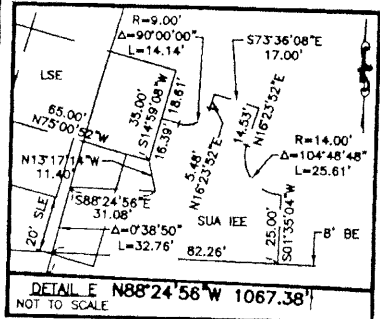
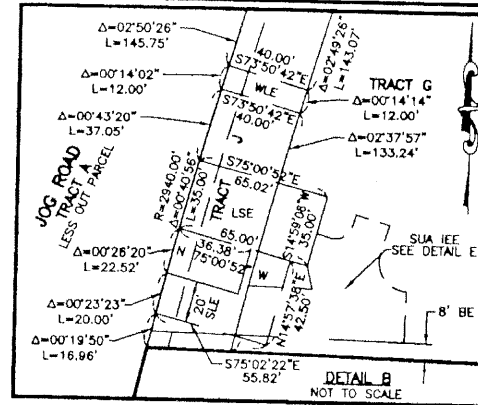
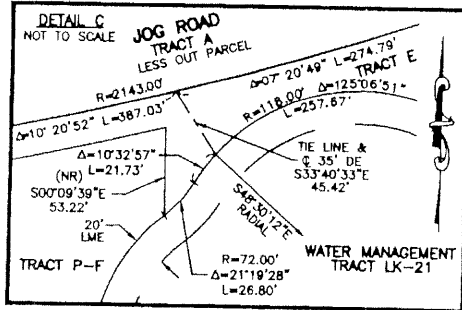
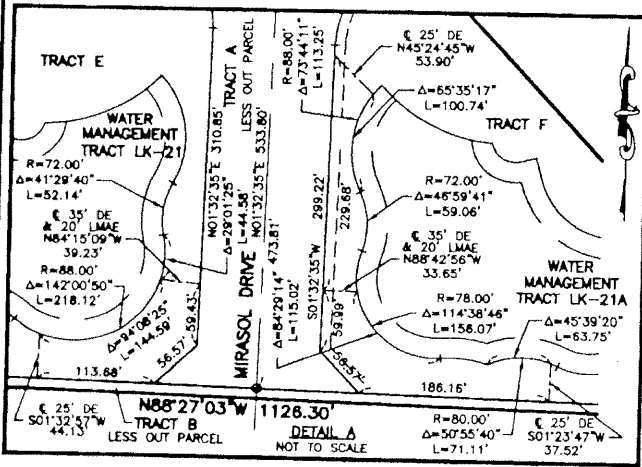
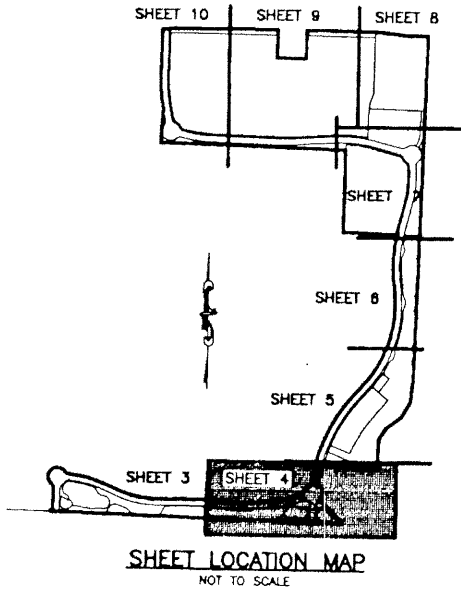


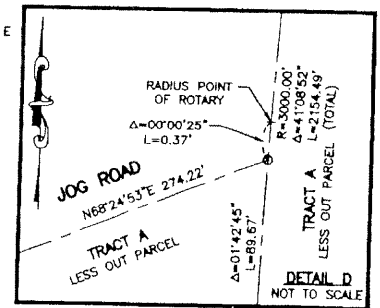
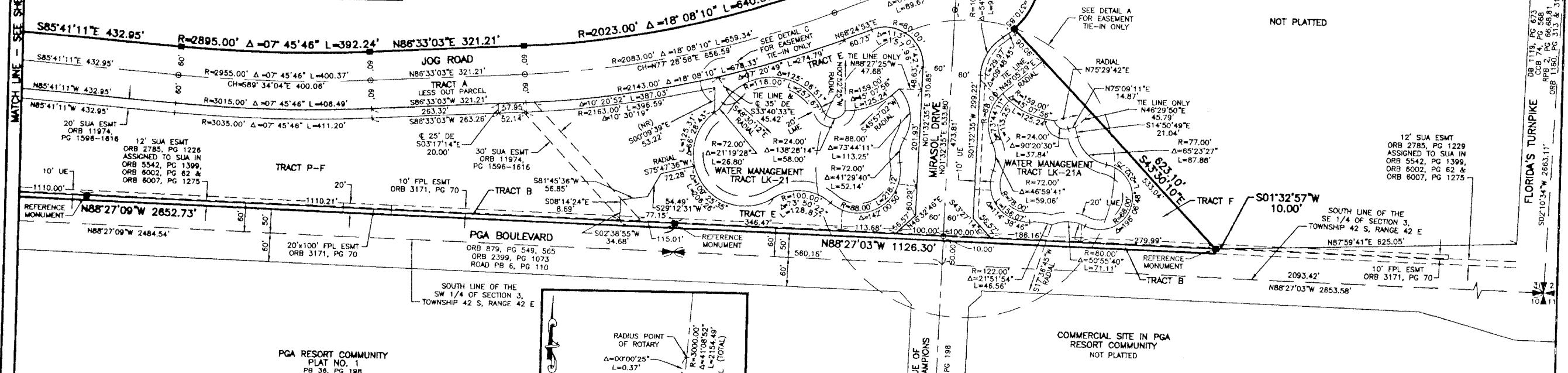
MIRASOL PLAT ONE

PART OF GOLF DIGEST P.C.D.
 SITUATE IN SECTIONS 33 AND 34, TOWNSHIP 41 SOUTH, RANGE 42 EAST,
 AND SECTIONS 3 AND 4, TOWNSHIP 42 SOUTH, RANGE 42 EAST,
 CITY OF PALM BEACH GARDENS,
 PALM BEACH COUNTY, FLORIDA
 MARCH, 2000 SHEET 4 OF 10



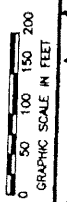
- LEGEND**
- L ARC LENGTH
 - AE ACCESS EASEMENT
 - BE BUFFER EASEMENT
 - Δ CENTRAL (DELTA) ANGLE
 - CCB CIRCUIT COURT BOOK
 - CH CHORD
 - (C) CALCULATED
 - (D) DEED
 - DB DEED BOOK
 - DE DRAINAGE EASEMENT
 - ESMT EASEMENT
 - FPL FLORIDA POWER AND LIGHT
 - IEE INGRESS/EGRESS EASEMENT
 - LAE LAKE ACCESS EASEMENT
 - LME LAKE MAINTENANCE EASEMENT
 - LMAE LAKE MAINTENANCE ACCESS EASEMENT
 - LSE LIFT STATION EASEMENT
 - (NR) NON-RADIAL
 - NO NUMBER
 - PCD PLANNED COMMUNITY DEVELOPMENT
 - ORB OFFICIAL RECORD BOOK
 - PB PLAT BOOK
 - PG(S) PAGE(S)
 - R RADIUS
 - RPB ROAD PLAT BOOK
 - SLE SEWER LINE EASEMENT
 - SUA SEACOAST UTILITY AUTHORITY
 - (TYP) TYPICAL
 - UE UTILITY EASEMENT
 - WLE WATER LINE EASEMENT
 - WSE WATER AND SEWER EASEMENT
 - PERMANENT REFERENCE MONUMENT
 - PERMANENT CONTROL POINT
 - SET LB-048
 - CENTERLINE

GOLF DIGEST, PCD
NOT PLATTED



17

STATE OF FLORIDA
 COUNTY OF PALM BEACH
 THIS PLAT WAS FILED FOR
 RECORD _____ DAY OF _____
 AD, 2000 AND DULY RECORDED
 IN PLAT BOOK _____ ON PAGES
 _____ AND _____
 DOROTHY H. WILKEN, CLERK
 BY: _____, D.C.



CIRCUIT COURT SEAL

S:\plan\lay\p01\m01\golfp01.dwg 11/01/00 08:00:15 AM EST

REV: 11-01-00
 CAD FILE:
 TAYLOR\GOLF\PROJ3

THIS INSTRUMENT WAS PREPARED BY MARY HANNA CLODFELTER, P.S.M. IN THE OFFICES OF MOCK, ROOS & ASSOCIATES, INC., 5720 CORPORATE WAY, WEST PALM BEACH, FLORIDA 33407.

SCALE:
 1" = 100'
 P.A. NO.:
 99310.00
 DATE:
 MARCH, 2000
 DRAWING NO.:
 41-42-33-1B



FLORIDA L.B. NO. 48
MIRASOL PLAT ONE
 PART OF GOLF DIGEST P.C.D.
 SITUATE IN SECTIONS 33 AND 34,
 TOWNSHIP 41 SOUTH, RANGE 42 EAST,
 AND SECTIONS 3 AND 4,
 TOWNSHIP 42 SOUTH, RANGE 42 EAST,
 CITY OF PALM BEACH GARDENS,
 PALM BEACH COUNTY, FLORIDA

SHEET 4 OF 10