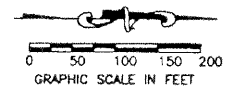


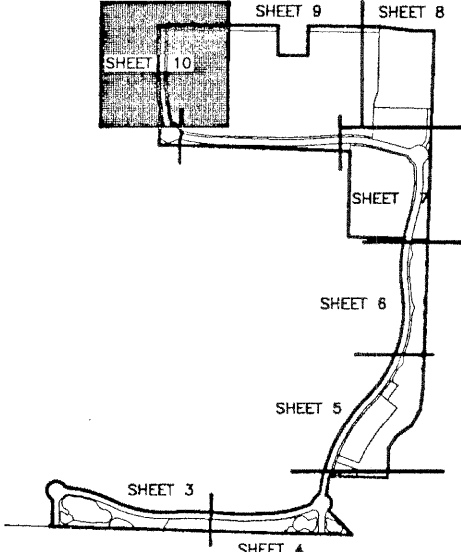
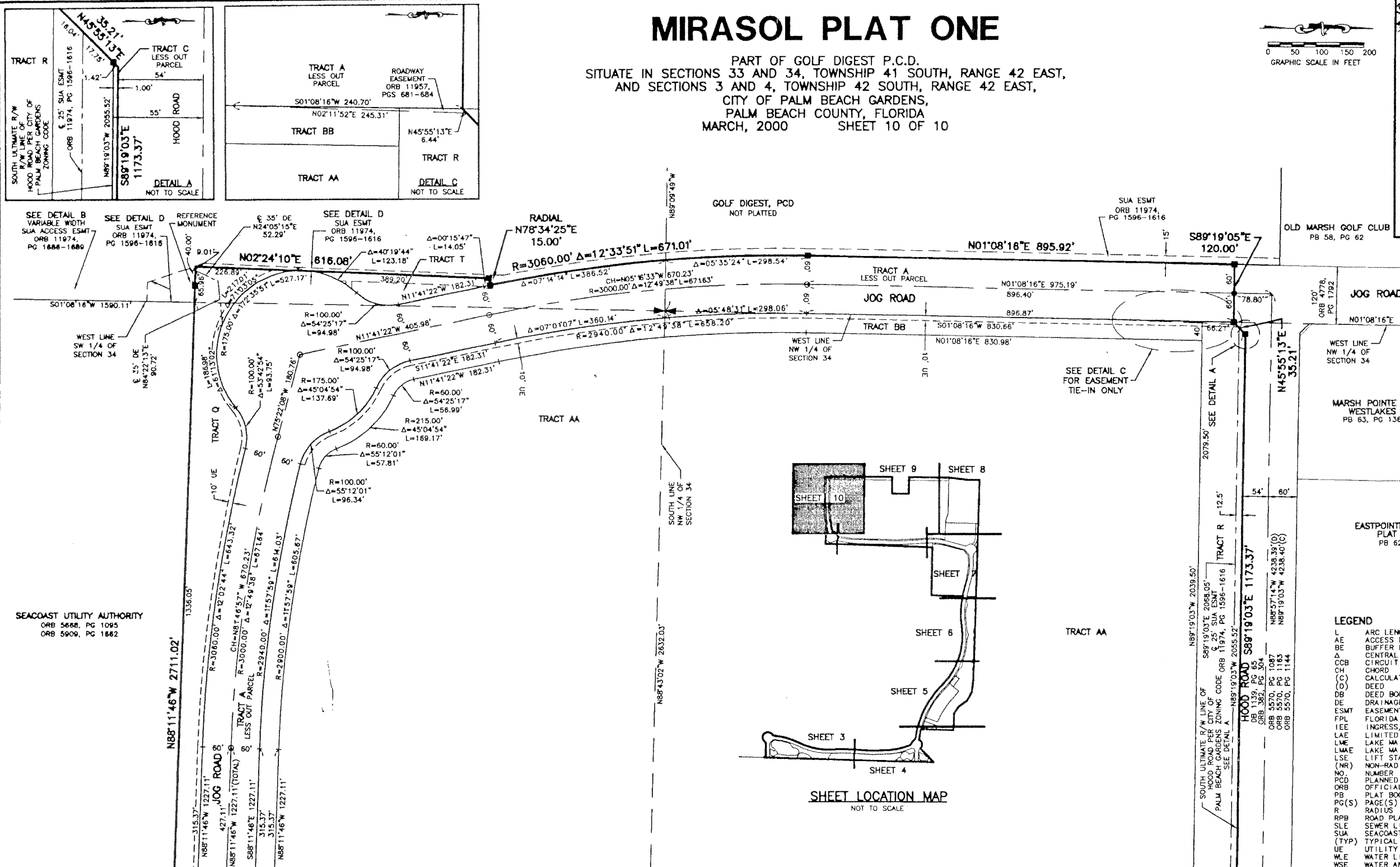
# MIRASOL PLAT ONE

PART OF GOLF DIGEST P.C.D.  
SITUATE IN SECTIONS 33 AND 34, TOWNSHIP 41 SOUTH, RANGE 42 EAST,  
AND SECTIONS 3 AND 4, TOWNSHIP 42 SOUTH, RANGE 42 EAST,  
CITY OF PALM BEACH GARDENS,  
PALM BEACH COUNTY, FLORIDA  
MARCH, 2000 SHEET 10 OF 10



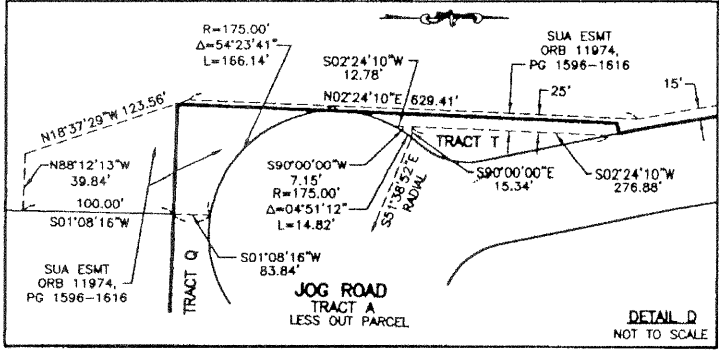
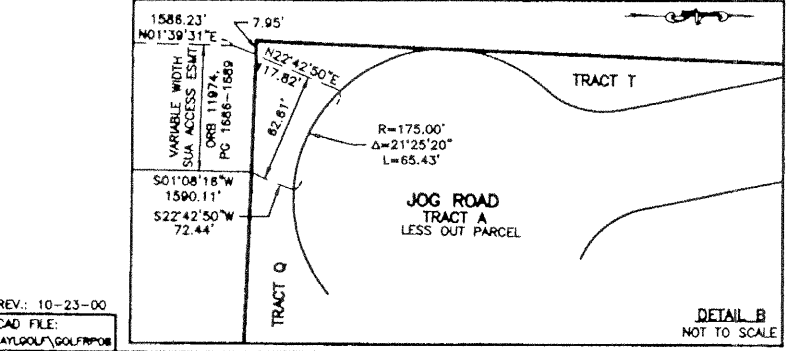
23

STATE OF FLORIDA  
COUNTY OF PALM BEACH  
THIS PLAT WAS FILED FOR  
RECORD \_\_\_\_\_ DAY OF \_\_\_\_\_  
AD, 2000 AND DULY RECORDED  
IN PLAT BOOK \_\_\_\_\_ ON PAGES  
\_\_\_\_\_ AND \_\_\_\_\_  
DOROTHY H. WILKEN, CLERK  
BY: \_\_\_\_\_ D.C.



SEE DETAIL B  
VARIABLE WIDTH  
SUA ACCESS ESMT  
ORB 11974,  
PG 1686-1689

SEACOAST UTILITY AUTHORITY  
ORB 5668, PG 1095  
ORB 5909, PG 1682



- LEGEND**
- L ARC LENGTH
  - AE ACCESS EASEMENT
  - BE BUFFER EASEMENT
  - CE CENTRAL (DELTA) ANGLE
  - CCB CIRCUIT COURT BOOK
  - CH CHORD
  - (C) CALCULATED
  - (D) DEED
  - DB DEED BOOK
  - DE DRAINAGE EASEMENT
  - ESMT EASEMENT
  - FPL FLORIDA POWER AND LIGHT
  - IEE INGRESS/EGRESS EASEMENT
  - LAIE LIMITED ACCESS EASEMENT
  - LMA LAKE MAINTENANCE EASEMENT
  - LMAE LAKE MAINTENANCE ACCESS EASEMENT
  - LSE LIFT STATION EASEMENT
  - (NR) NON-RADIAL
  - NO NUMBER
  - PCD PLANNED COMMUNITY DEVELOPMENT
  - ORB OFFICIAL RECORD BOOK
  - PB PLAT BOOK
  - PG(S) PAGE(S)
  - R RADIUS
  - RPB ROAD PLAT BOOK
  - SLE SEWER LINE EASEMENT
  - SUA SEACOAST UTILITY AUTHORITY
  - (TYP) TYPICAL
  - UE UTILITY EASEMENT
  - WLE WATER LINE EASEMENT
  - WSE WATER AND SEWER EASEMENT
  - PERMANENT REFERENCE MONUMENT
  - SET LB-04B PERMANENT CONTROL POINT
  - SET LB-04C CENTERLINE

THIS INSTRUMENT WAS PREPARED BY MARY HANNA CLODFELTER, P.S.M. IN THE OFFICES OF MOCK, ROOS & ASSOCIATES, INC., 5720 CORPORATE WAY, WEST PALM BEACH, FLORIDA 33407.

SCALE:  
1" = 100'  
P.A. NO.:  
99310.00  
DATE:  
MARCH, 2000  
DRAWING NO.:  
41-42-33-18

FLORIDA L.B. NO. 48

**MOCK ROOS**  
ENGINEERS ARCHITECTS PLANNERS

5720 Corporate Way, West Palm Beach, Florida 33407  
(561) 863-3113, fax 478-7248

SHEET 10 OF 10

**MIRASOL PLAT ONE**  
PART OF GOLF DIGEST P.C.D.,  
SITUATE IN SECTIONS 33 AND 34,  
TOWNSHIP 41 SOUTH, RANGE 42 EAST,  
AND SECTIONS 3 AND 4,  
TOWNSHIP 42 SOUTH, RANGE 42 EAST,  
CITY OF PALM BEACH GARDENS,  
PALM BEACH COUNTY, FLORIDA