

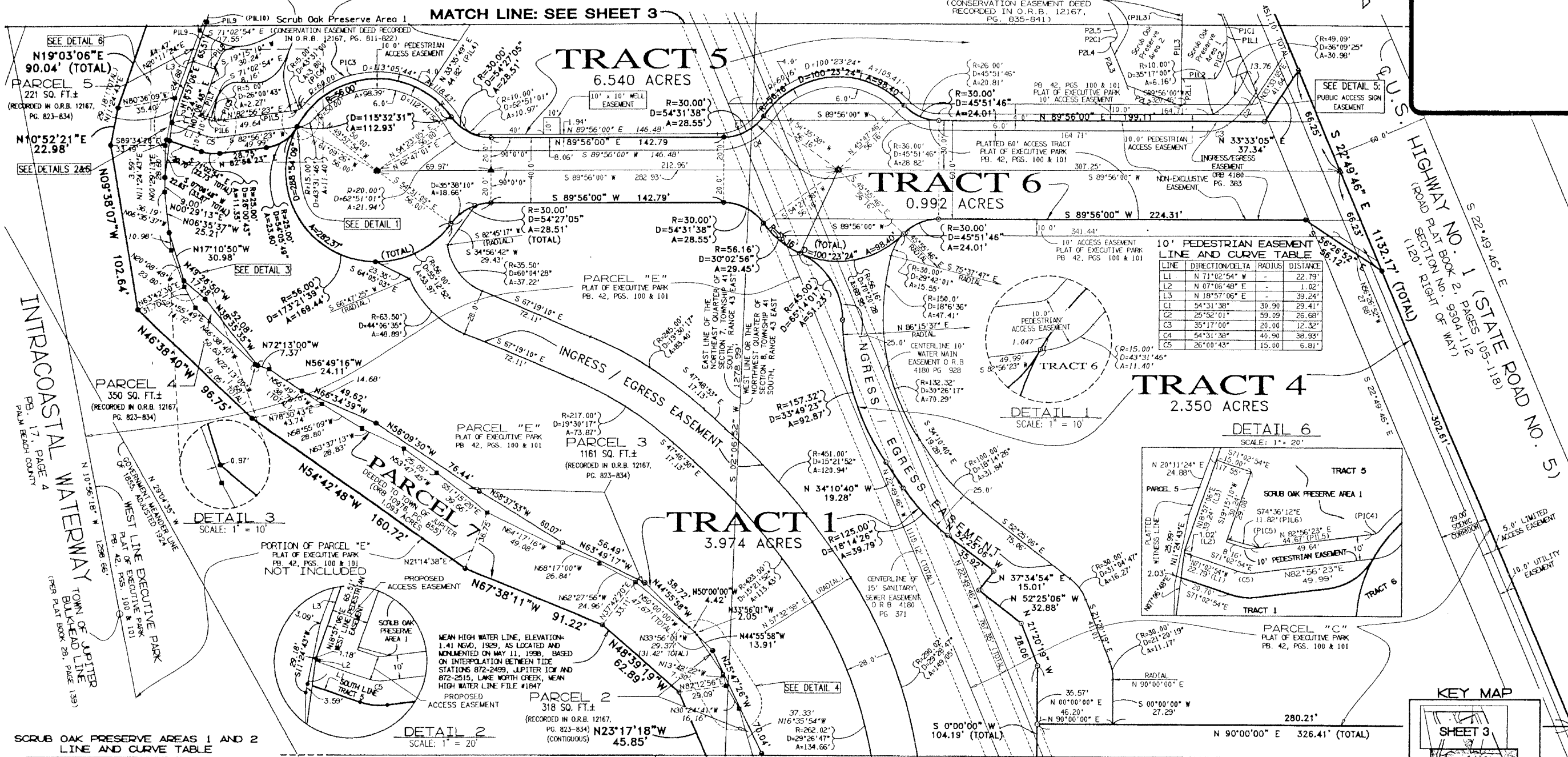
MANGROVE BAY, P.U.D.

A PLANNED UNIT DEVELOPMENT

A REPLAT OF PARCELS "B", "C", AND A PORTION OF "E", OF THE PLAT OF EXECUTIVE PARK AS RECORDED IN PLAT BOOK 42, PAGES 100 AND 101, LYING IN SECTIONS 7 AND 8, TOWNSHIP 41 SOUTH, RANGE 43 EAST, TOWN OF JUPITER, PALM BEACH COUNTY, FLORIDA

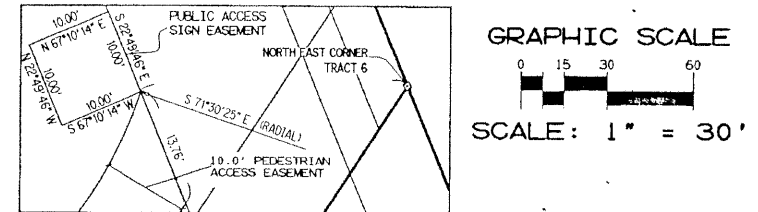
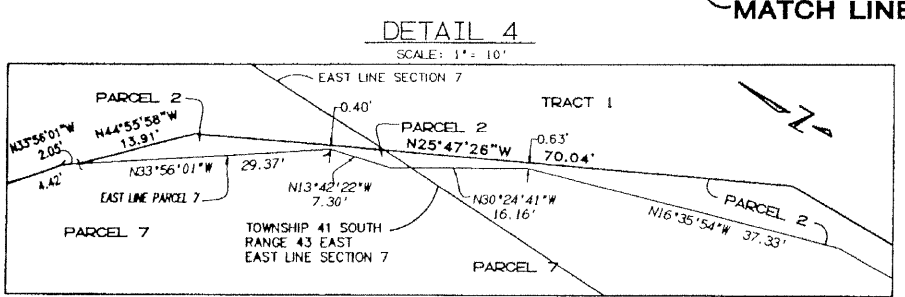
SHEET 4 OF 5

DECEMBER, 2000



SCRUB OAK PRESERVE AREAS 1 AND 2 LINE AND CURVE TABLE

NUMBER	DIRECTION/Delta	RADIUS	DIST
PIL1	N 01°57'33" E	8.07'	8.07'
PIL2	N 90°00'00" E	20.68'	20.68'
PIL3	S 00°27'45" W	40.95'	40.95'
PIL4	N 33°35'49" E	44.82'	44.82'
PIL5	N 82°56'23" E	44.67'	44.67'
PIL6	N 74°36'13" E	11.82'	11.82'
PIL7	S 13°15'13" W	29.08'	29.08'
PIL8	S 71°02'54" E	15.00'	15.00'
PIL9	S 18°57'06" W	26.27'	26.27'
PIL10	S 11°26'21" W	13.40'	13.40'
PIC1	S 02°12'21" W	468.57'	8.04'
PIC2	S 39°27'56" W	34.57'	23.81'
PIC3	S 82°46'13" W	60.00'	86.67'
PIC4	S 43°31'42" W	5.00'	3.80'
PIC5	S 22°27'25" W	8.00'	3.14'
P2.1	S 0°35'32" W	16.39'	16.39'
P2.2	N 69°37'01" W	35.15'	35.15'
P2.3	N 22°49'46" W	26.00'	26.00'
P2.4	N 67°10'14" E	2.00'	2.00'
P2.5	N 68°00'39" E	34.37'	34.37'
P2.1	S 83°16'01" W	4.53'	6.59'



Keshavarz & Associates, Inc.
CONSULTING ENGINEERS - SURVEYORS
Licensed Business No. 4897
1280 N. Congress Avenue, Suite 206
West Palm Beach, Florida 33409
Tel: (561) 689-8600 Fax: (561) 689-7476
THIS INSTRUMENT WAS PREPARED BY MANUEL A. GUTIERREZ, PSM
IN THE OFFICES OF KESHAVARZ & ASSOCIATES, INC.
PROFESSIONAL SURVEYOR AND MAPPER NO. 4102