

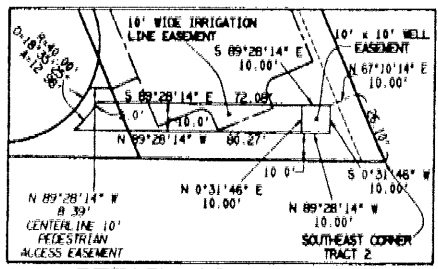
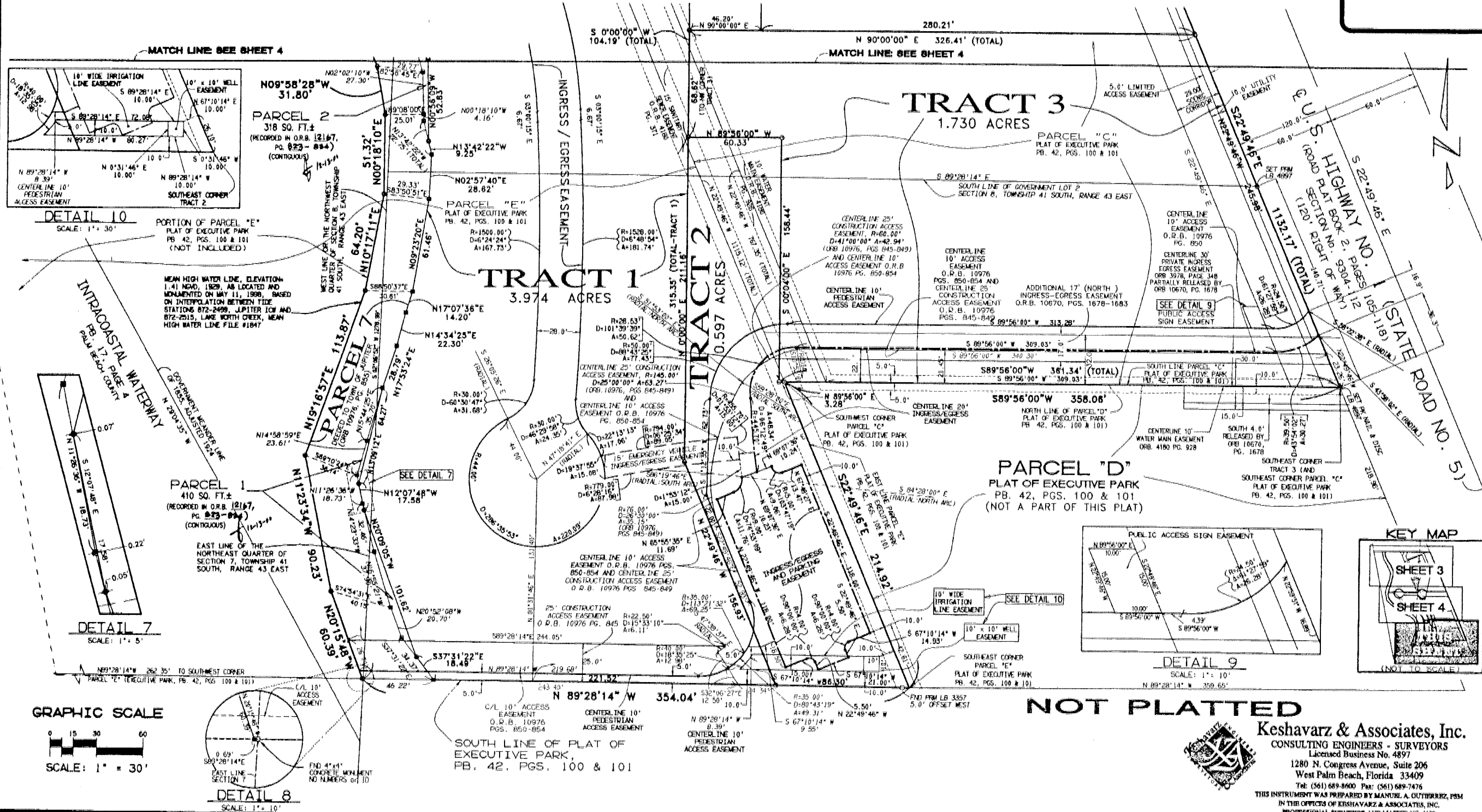
MANGROVE BAY, P.U.D.

A PLANNED UNIT DEVELOPMENT

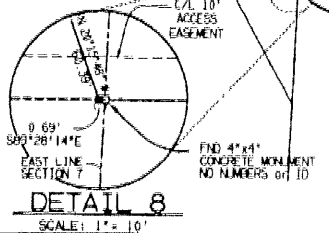
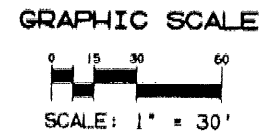
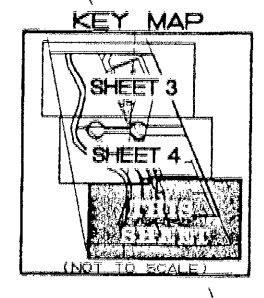
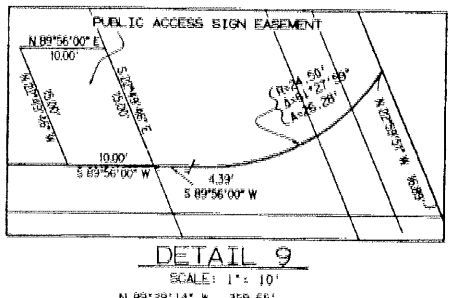
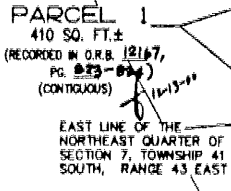
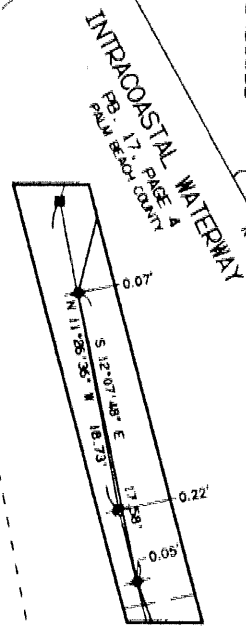
A REPLAT OF PARCELS "B", "C", AND A PORTION OF "E", OF THE PLAT OF EXECUTIVE PARK AS RECORDED IN PLAT BOOK 42, PAGES 100 AND 101, LYING IN SECTIONS 7 AND 8, TOWNSHIP 41 SOUTH, RANGE 43 EAST, TOWN OF JUPITER, PALM BEACH COUNTY, FLORIDA

SHEET 5 OF 5

DECEMBER, 2000



PORTION OF PARCEL "E"
PLAT OF EXECUTIVE PARK
PB. 42, PGS. 100 & 101
(NOT INCLUDED)



NOT PLATTED

Keshavarz & Associates, Inc.
CONSULTING ENGINEERS - SURVEYORS
Licensed Business No. 4897
1280 N. Congress Avenue, Suite 206
West Palm Beach, Florida 33409
Tel: (561) 689-8600 Fax: (561) 689-7476
THIS INSTRUMENT WAS PREPARED BY MANUEL A. GUTIERREZ, PSM
IN THE OFFICES OF KESHAVARZ & ASSOCIATES, INC.
PROFESSIONAL SURVEYOR AND MAPPER NO. 4102