

POLO TRACE II PLAT NO. 4

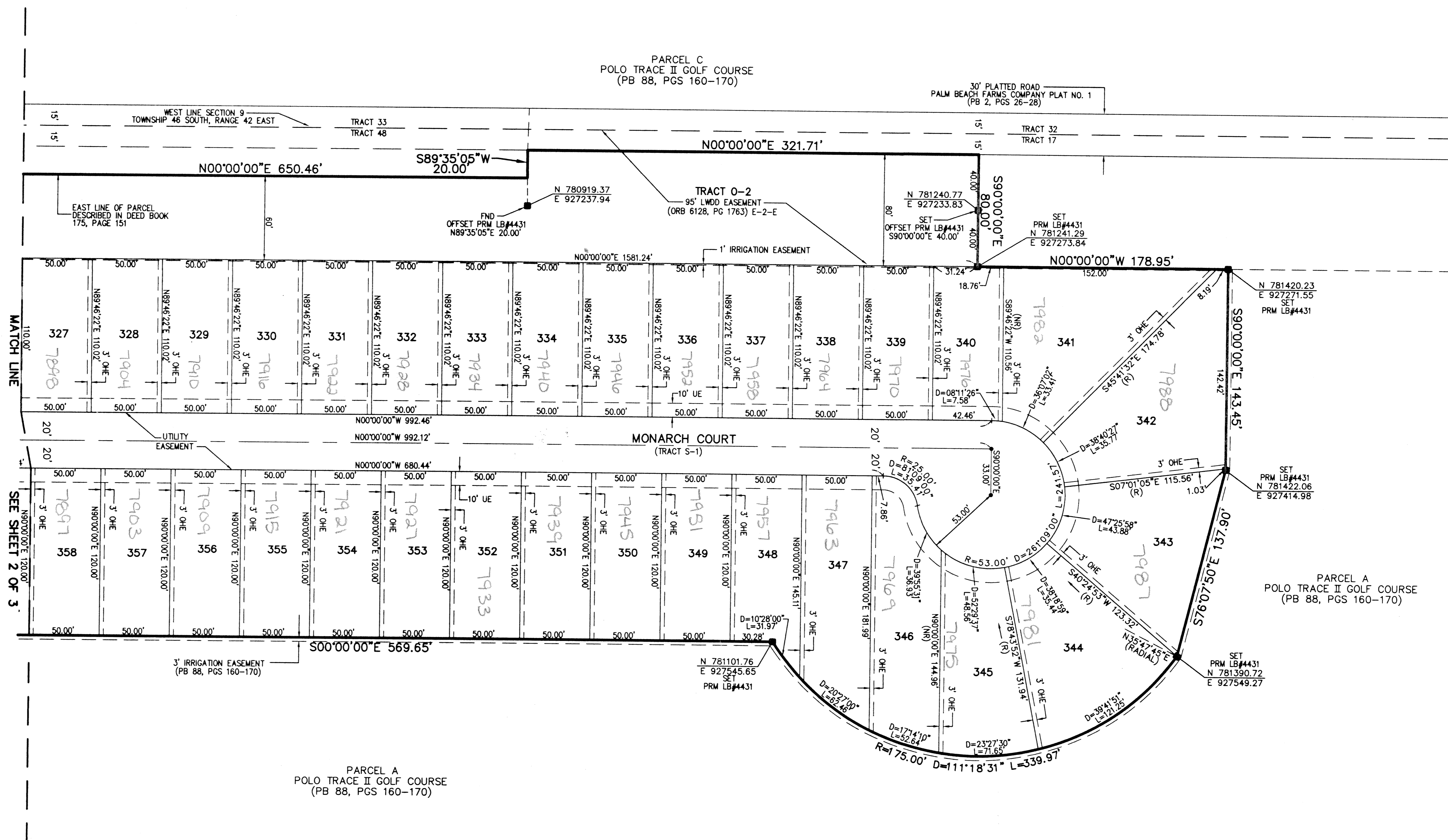
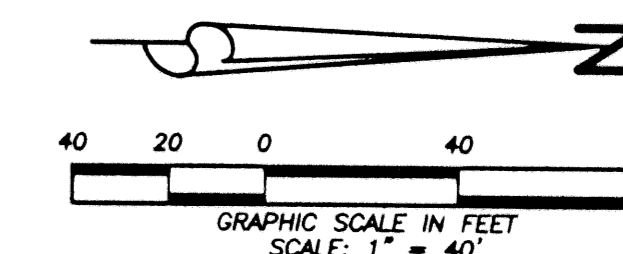
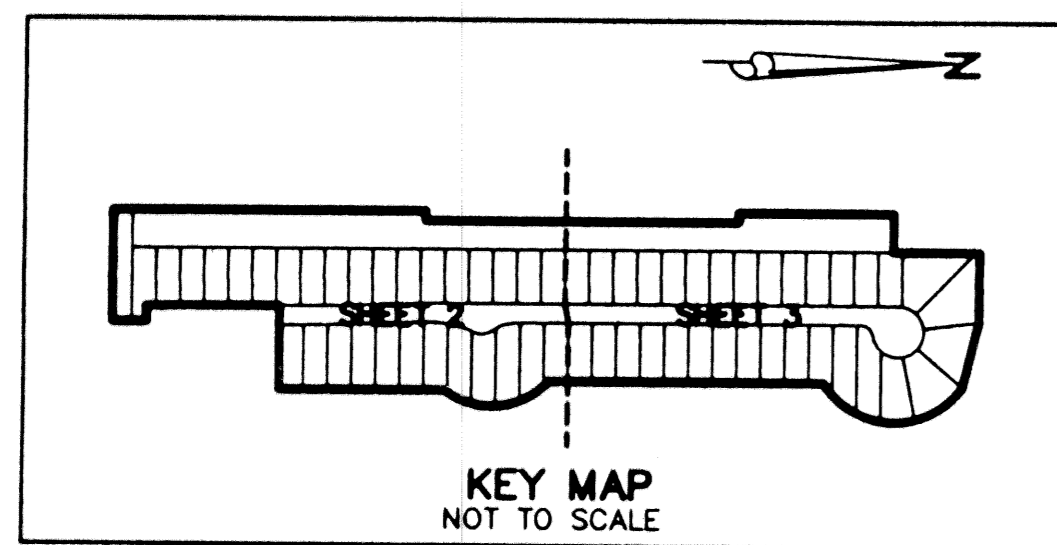
(A PART OF POLO TRACE II P.U.D.)

BEING A REPLAT OF PARCEL B, POLO TRACE II GOLF COURSE,
 ACCORDING TO THE PLAT THEREOF, AS RECORDED IN PLAT BOOK 88, PAGES 160-170,
 PUBLIC RECORDS OF PALM BEACH COUNTY, FLORIDA.
 LYING IN SECTION 9, TOWNSHIP 46 SOUTH, RANGE 42 EAST
 PALM BEACH COUNTY, FLORIDA

SEPTEMBER, 2000 SHEET 3 OF 3

0633-005

53



- LEGEND:**
- DE = DRAINAGE EASEMENT
 - DB = DEED BOOK
 - FND = FOUND
 - LB = LICENSE BUSINESS
 - MON = MONUMENT
 - ORB = OFFICIAL RECORD BOOK
 - OHE = OVERHANG EASEMENT
 - PB = PLAT BOOK
 - PCP = PERMANENT CONTROL POINT
 - PG = PAGE(S)
 - POB = POINT OF BEGINNING
 - POC = POINT OF COMMENCEMENT
 - PRM = PERMANENT REFERENCE MONUMENT
 - ROW = RIGHT-OF-WAY
 - RPB = ROAD PLAT BOOK
 - UE = UTILITY EASEMENT
 - WMME = WATER MANAGEMENT MAINTENANCE EASEMENT
 - = SET 4"x4" CONCRETE MONUMENT LB#4431
 - = FOUND 4"x4" CONCRETE MONUMENT LB#4431

LIDBERG LAND SURVEYING, INC.

675 West Indiantown Road, Suite 200,
 Jupiter, Florida 33458 TEL. 561-746-8454

CAD	K:\AUTOCAD\HVN\POLO\0867-306.DWG		
REF	K:\AUTOCAD\KHV\POLO\POLOMG01.DWG		
FLD	N/A	FB.	PG.
OFF	A.J.P.		JOB 97-086(306)
CKD	D.C.L.	SHEET 3 OF 3	DATE 09/08/98
			DWG 097-086P

SYMPTOMS: POLO TRACE II
 PAGE 53
 ELEVATION: 200A
 ZONING: RS(15)
 ZIP CODE: 33457
 TRZ: 1159
 SUB NUMBER