

THE INN AT POLO COMMERCIAL DEVELOPMENT

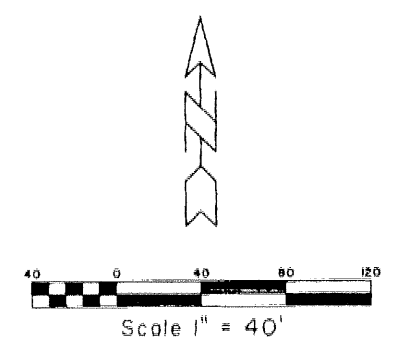
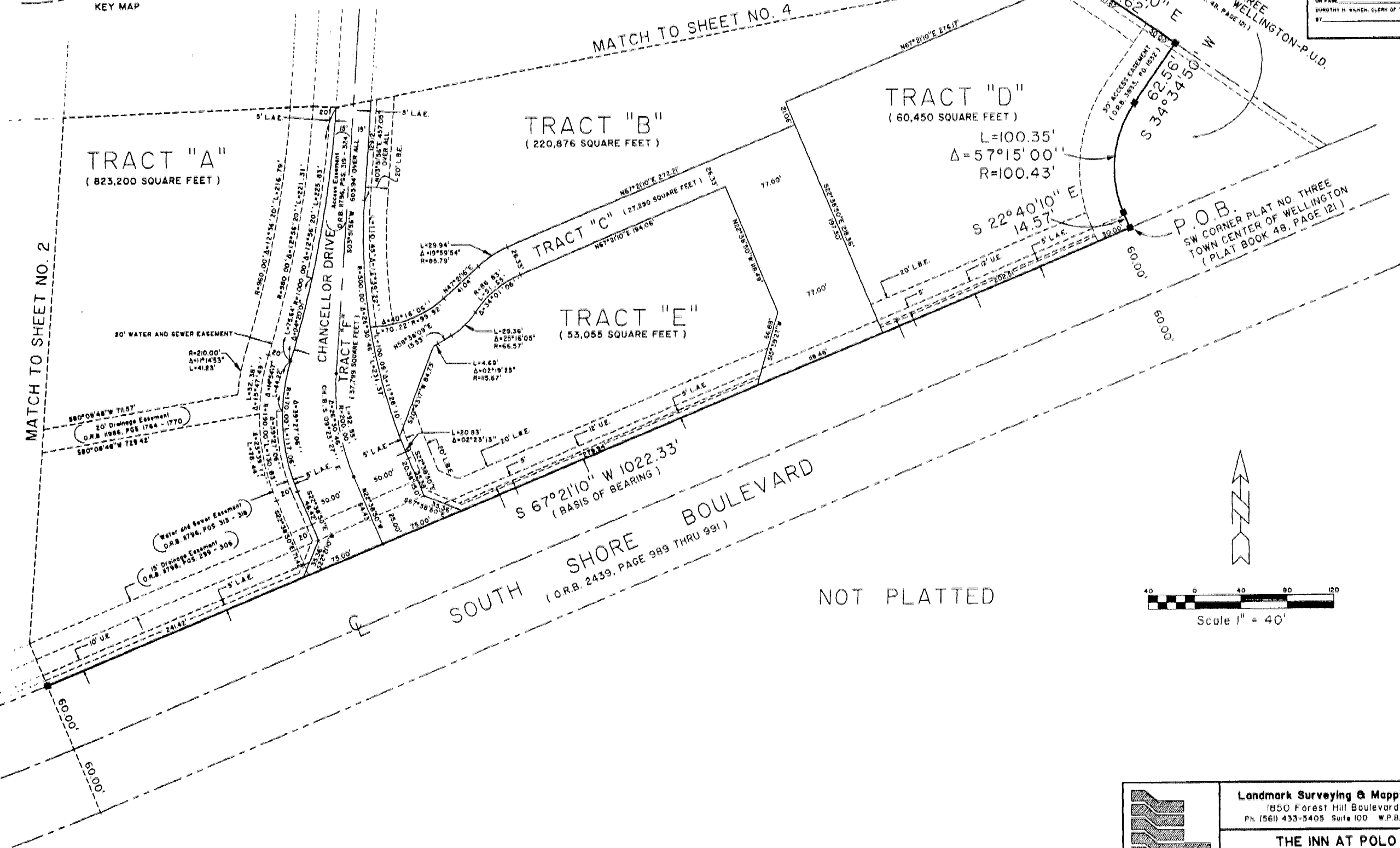
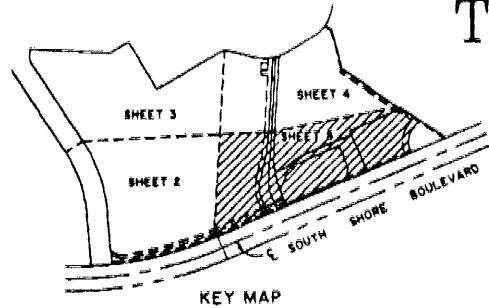
LYING IN SECTIONS 10, 14 AND 15, TOWNSHIP 44 SOUTH, RANGE 41 EAST,
VILLAGE OF WELLINGTON, PALM BEACH COUNTY, FLORIDA.

SHEET 5 OF 5

PLAT NO. 2
TOWN CENTER OF WELLINGTON-P.U.D.
(PLAT BOOK 42, PAGE 55)

53

STATE OF FLORIDA
COUNTY OF PALM BEACH
THIS PLAT WAS FILED FOR RECORD AT _____
M, THE DAY OF _____ 2000
AND DULY RECORDED IN PLAT BOOK NO. _____
ON PAGE _____
DOROTHY H. WALKER, CLERK OF THE CIRCUIT COURT
BY _____ D.C.



Landmark Surveying & Mapping Inc.
1850 Forest Hill Boulevard
Ph. (561) 433-5405 Suite 100 W.P.B. Florida

**THE INN AT POLO
COMMERCIAL DEVELOPMENT**