

MIRASOL PLAT TWO

PART OF GOLF DIGEST P.C.D.
SECTION 4, TOWNSHIP 42 SOUTH, RANGE 42 EAST,
CITY OF PALM BEACH GARDENS,
PALM BEACH COUNTY, FLORIDA
MARCH, 2000 SHEET 3 OF 5

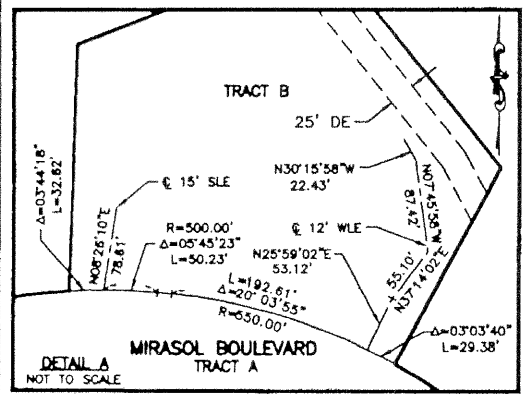
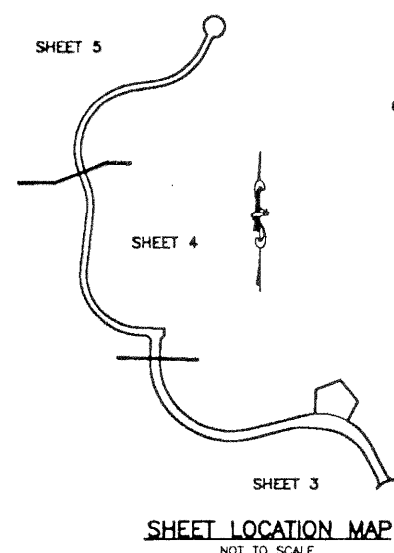
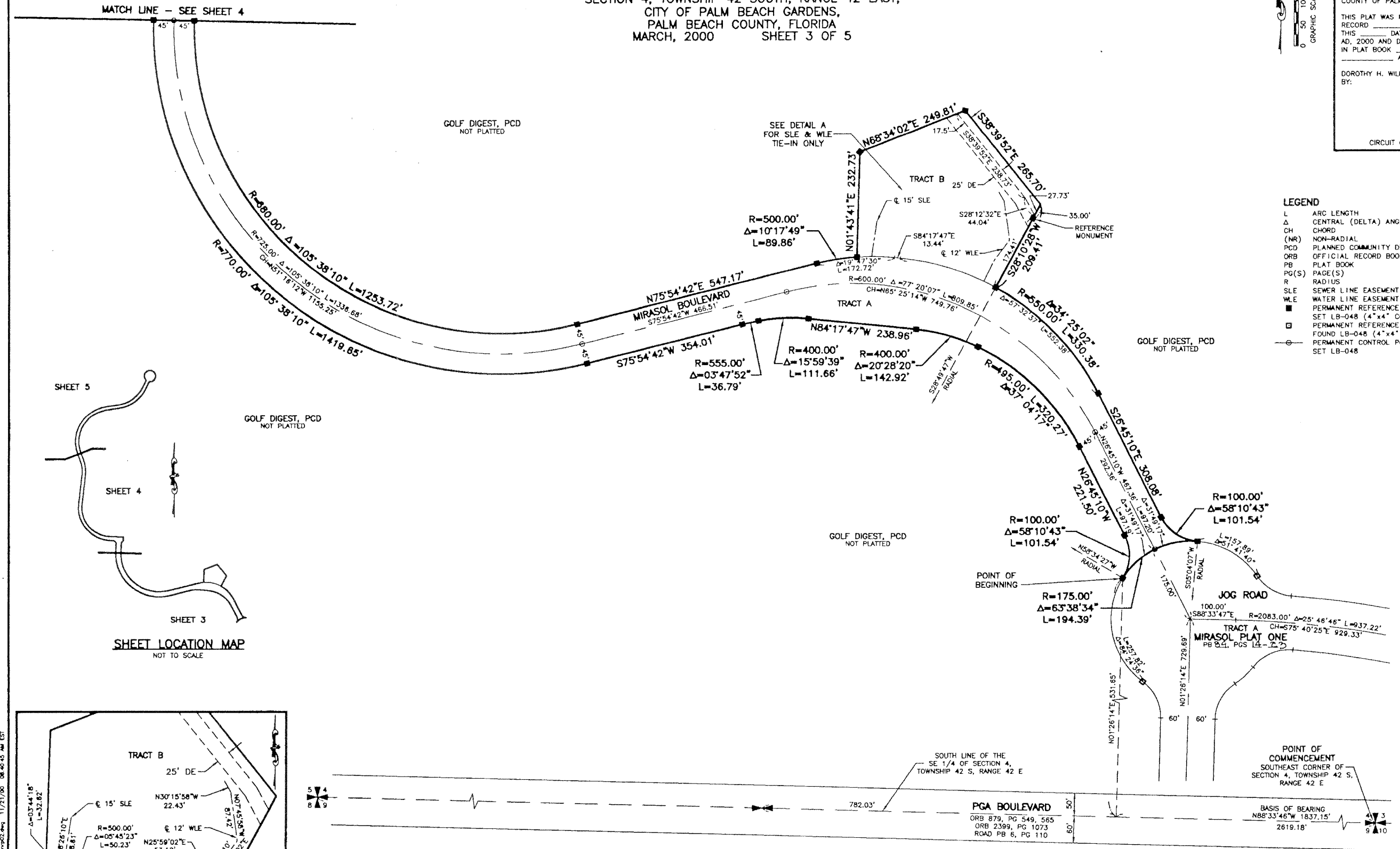
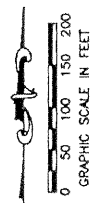
63

STATE OF FLORIDA
COUNTY OF PALM BEACH

THIS PLAT WAS FILED FOR
RECORD _____
THIS _____ DAY OF _____
AD, 2000 AND DULY RECORDED
IN PLAT BOOK _____ ON PAGES
_____ AND _____

DOROTHY H. WILKEN, CLERK
BY: _____ D.C.

CIRCUIT COURT SEAL



REV: 10-30-00
CAD FILE:
TAYLSPIN\SPINMP02

PGA BOULEVARD
ORB 879, PG 549, 565
ORB 2399, PG 1073
ROAD PB 6, PG 110

782.03'

782.03'

782.03'

THIS INSTRUMENT WAS PREPARED BY MARY HANNA CLODFELTER, P.S.M. IN THE OFFICES OF MOCK, ROOS & ASSOCIATES, INC., 5720 CORPORATE WAY, WEST PALM BEACH, FLORIDA 33407.

SCALE: 1" = 100'

PLAT NO.: 99312.00

DATE: MARCH, 2000

DRAWING NO.: 42-42-04-32

FLORIDA L.B. NO. 48

MOCK ROOS
ENGINEERS & PLANNERS

5720 Corporate Way, West Palm Beach, Florida 33407
(561) 683-3113, fax 478-7248

MIRASOL PLAT TWO
PART OF GOLF DIGEST P.C.D.
SITUATE IN SECTION 4,
TOWNSHIP 42 SOUTH, RANGE 42 EAST,
CITY OF PALM BEACH GARDENS,
PALM BEACH COUNTY, FLORIDA

SHEET 3 OF 5