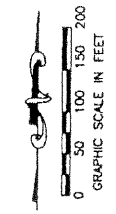


# MIRASOL PLAT TWO

PART OF GOLF DIGEST P.C.D.  
SECTION 4, TOWNSHIP 42 SOUTH, RANGE 42 EAST,  
CITY OF PALM BEACH GARDENS,  
PALM BEACH COUNTY, FLORIDA  
MARCH, 2000 SHEET 5 OF 5

65

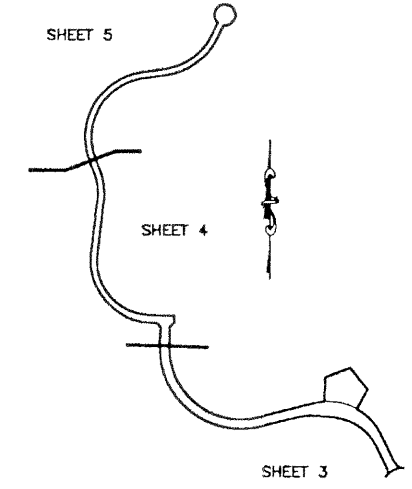
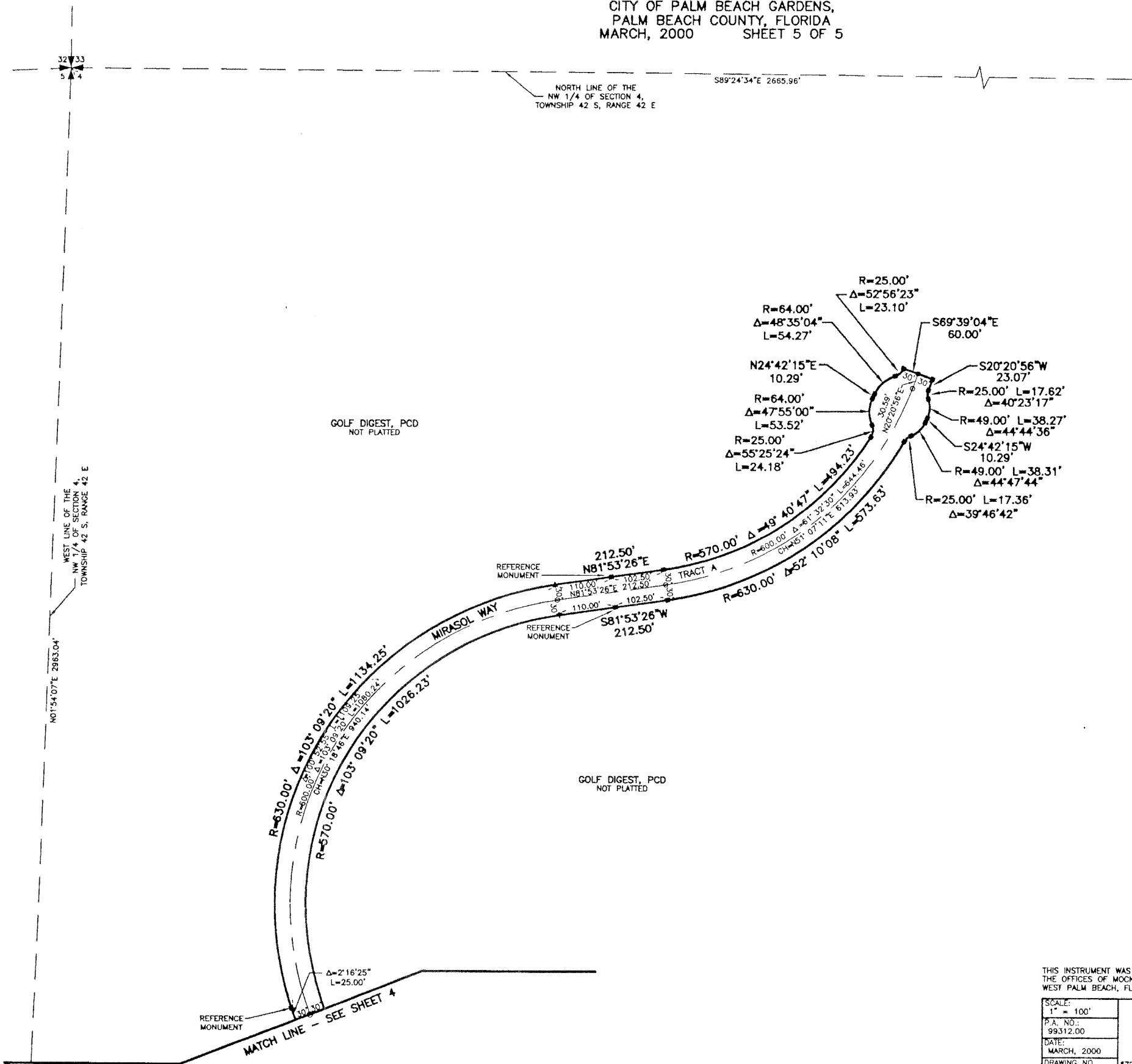


STATE OF FLORIDA  
COUNTY OF PALM BEACH  
THIS PLAT WAS FILED FOR  
RECORD THIS \_\_\_\_\_ DAY OF \_\_\_\_\_  
AD, 2000 AND DULY RECORDED  
IN PLAT BOOK \_\_\_\_\_ ON PAGES  
\_\_\_\_\_ AND \_\_\_\_\_  
DOROTHY H. WILKEN, CLERK  
BY: \_\_\_\_\_, D.C.

CIRCUIT COURT SEAL

### LEGEND

- L ARC LENGTH
- Δ CENTRAL (DELTA) ANGLE
- CH CHORD
- (NR) NON-RADIAL
- PCD PLANNED COMMUNITY DEVELOPMENT
- ORB OFFICIAL RECORD BOOK
- PB PLAT BOOK
- PG(S) PAGE(S)
- R RADIUS
- SLE SEWER LINE EASEMENT
- WLE WATER LINE EASEMENT
- PERMANENT REFERENCE MONUMENT  
SET LB-048 (4"x4" CONCRETE)
- PERMANENT REFERENCE MONUMENT  
FOUND LB-048 (4"x4" CONCRETE)
- PERMANENT CONTROL POINT  
SET LB-048



SHEET LOCATION MAP  
NOT TO SCALE

S:\proj\15593\15593.dwg 11/20/00 02:55:55 PM EST

REV.: 11-22-00  
CAD FILE:  
TAYLSPW\SPINRPO4

THIS INSTRUMENT WAS PREPARED BY MARY HANNA CLODFELTER, P.S.M. IN THE OFFICES OF MOCK, ROOS & ASSOCIATES, INC., 5720 CORPORATE WAY, WEST PALM BEACH, FLORIDA 33407.

SCALE:  
1" = 100'  
PLAT NO.:  
99312.00  
DATE:  
MARCH, 2000  
DRAWING NO.:  
42-42-04-32

FLORIDA L.B. NO. 48

**MOCK ROOS**  
ENGINEERS, PLANNERS & ARCHITECTS

5720 Corporate Way, West Palm Beach, Florida 33407  
(561) 683-3113, fax 478-7248

MIRASOL PLAT TWO  
PART OF GOLF DIGEST P.C.D.  
SITUATE IN SECTION 4,  
TOWNSHIP 42 SOUTH, RANGE 42 EAST,  
CITY OF PALM BEACH GARDENS,  
PALM BEACH COUNTY, FLORIDA

SHEET 5 OF 5