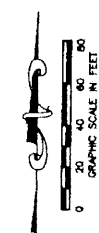


MIRASOL PARCEL FIVE

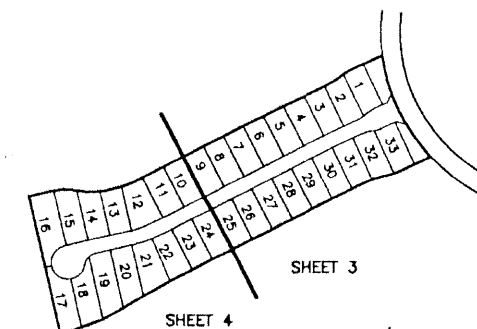
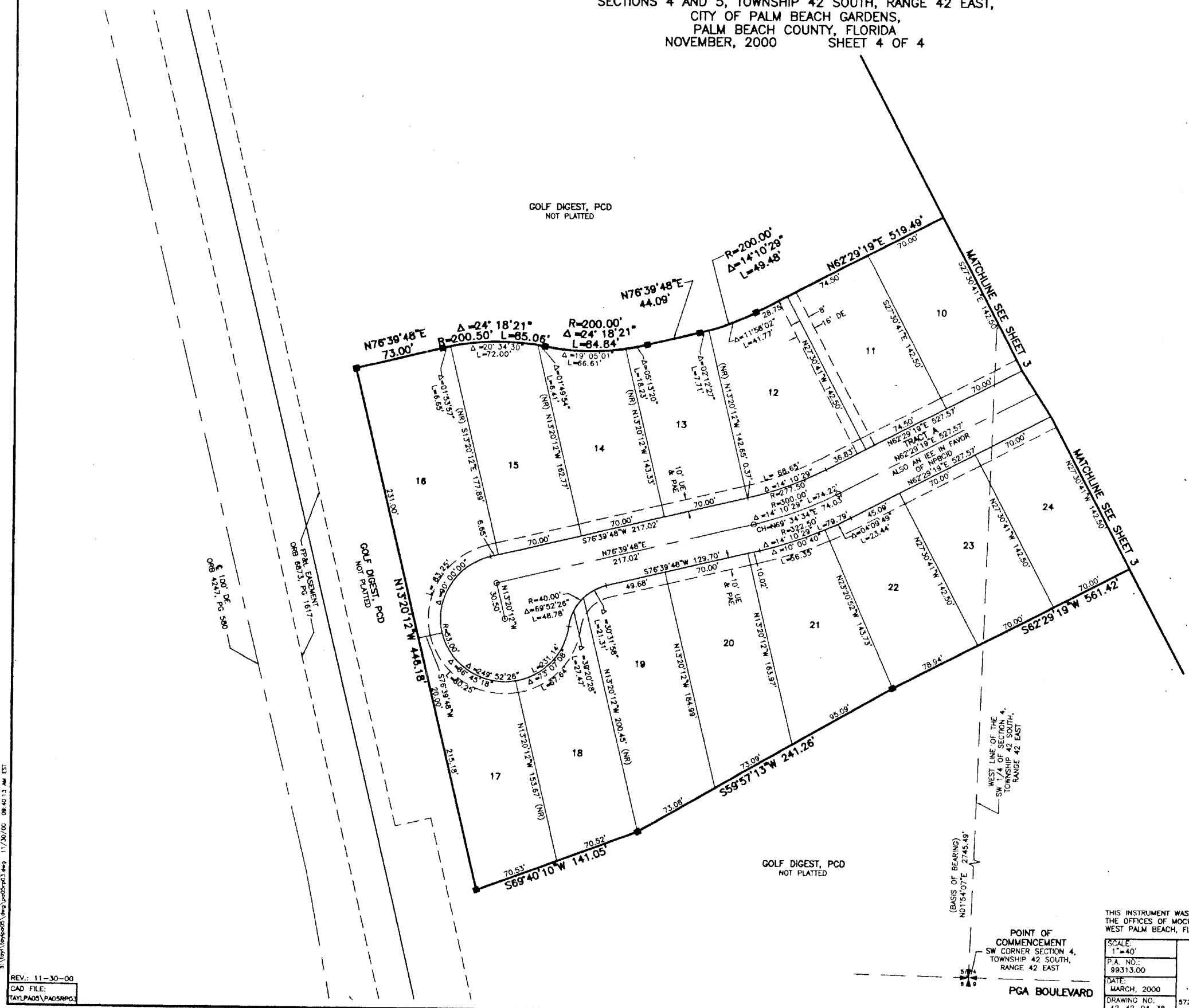
PART OF GOLF DIGEST P.C.D.
SECTIONS 4 AND 5, TOWNSHIP 42 SOUTH, RANGE 42 EAST,
CITY OF PALM BEACH GARDENS,
PALM BEACH COUNTY, FLORIDA
NOVEMBER, 2000 SHEET 4 OF 4

85

STATE OF FLORIDA
COUNTY OF PALM BEACH
THIS PLAT WAS FILED FOR
RECORD _____ DAY OF _____
AD, 2000 AND DULY RECORDED
IN PLAT BOOK _____ ON PAGES
_____ AND _____
DOROTHY H. WILKEN, CLERK
BY: _____, D.C.



CIRCUIT COURT SEAL



SHEET LOCATION MAP
(NOT TO SCALE)

- LEGEND**
- Δ CENTRAL (DELTA) ANGLE
 - CH CHORD
 - DE DRAINAGE EASEMENT
 - IEE INGRESS-EGRESS EASEMENT
 - L ARC LENGTH
 - NPBCID NORTHERN PALM BEACH COUNTY IMPROVEMENT DISTRICT
 - (NR) NON-RADIAL
 - ORB OFFICIAL RECORD BOOK
 - PAE PEDESTRIAN ACCESS EASEMENT
 - PB PLAT BOOK
 - PG(S) PAGE(S)
 - PCD PLANNED COMMUNITY DEVELOPMENT
 - R RADIUS
 - (TYP) TYPICAL
 - UE UTILITY EASEMENT
 - PERMANENT REFERENCE MONUMENT
 - FOUND LB 048 (4" x 4" CONCRETE)
 - PERMANENT REFERENCE MONUMENT SET LB 048 (4" x 4" CONCRETE)
 - PERMANENT CONTROL POINT SET LB 048
 - c CENTERLINE

S:\proj\10000005\10000005.dwg 11/30/00 09:40:13 AM EST

REV: 11-30-00
CAD FILE:
TAYLPA05/PADSRP03

THIS INSTRUMENT WAS PREPARED BY MARY HANNA CLODFELTER, P.S.M. IN THE OFFICES OF MOCK, ROOS & ASSOCIATES, INC., 5720 CORPORATE WAY, WEST PALM BEACH, FLORIDA 33407.

POINT OF COMMENCEMENT
SW CORNER SECTION 4,
TOWNSHIP 42 SOUTH,
RANGE 42 EAST
PGA BOULEVARD

SCALE:
1"=40'
P.A. NO.:
99313.00
DATE:
MARCH, 2000
DRAWING NO.
42-42-04-38

FLORIDA L.B. NO. 48

MOCK ROOS
ENGINEERS ARCHITECTS PLANNERS

5720 Corporate Way, West Palm Beach, Florida 33407
(561) 683-3113, fax 478-7248

MIRASOL PARCEL FIVE
PART OF GOLF DIGEST P.C.D.
SITUATE IN SECTIONS 4 AND 5,
TOWNSHIP 42 SOUTH, RANGE 42 EAST,
CITY OF PALM BEACH GARDENS,
PALM BEACH COUNTY, FLORIDA

SHEET 4 OF 4