

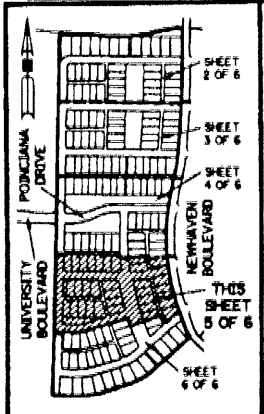
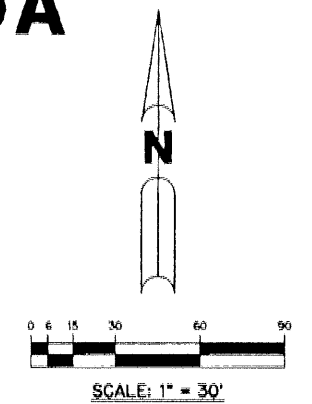
# NEWHAVEN - 7B - PHASE 2 AT ABACOA

BEING A REPLAT OF A PORTION OF TRACT RN7B ACCORDING TO THE PLAT OF ABACOA PLAT NO. 1, AS RECORDED IN PLAT BOOK 78, PAGES 145 THROUGH 163, INCLUSIVE, OF THE PUBLIC RECORDS OF PALM BEACH COUNTY, FLORIDA. LYING IN SECTION 24, TOWNSHIP 41 SOUTH, RANGE 42 EAST, TOWNM OF JUPITER, PALM BEACH COUNTY, FLORIDA

SHEET 5 OF 6 JULY, 2000

THIS INSTRUMENT PREPARED BY PERRY C. WHITE, P.S.M. 4213, STATE OF FLORIDA LAWSON, NOBLE AND WEBB, INC. ENGINEERS PLANNERS SURVEYORS 420 COLUMBIA DRIVE WEST PALM BEACH, FLORIDA 33409 LB-6674

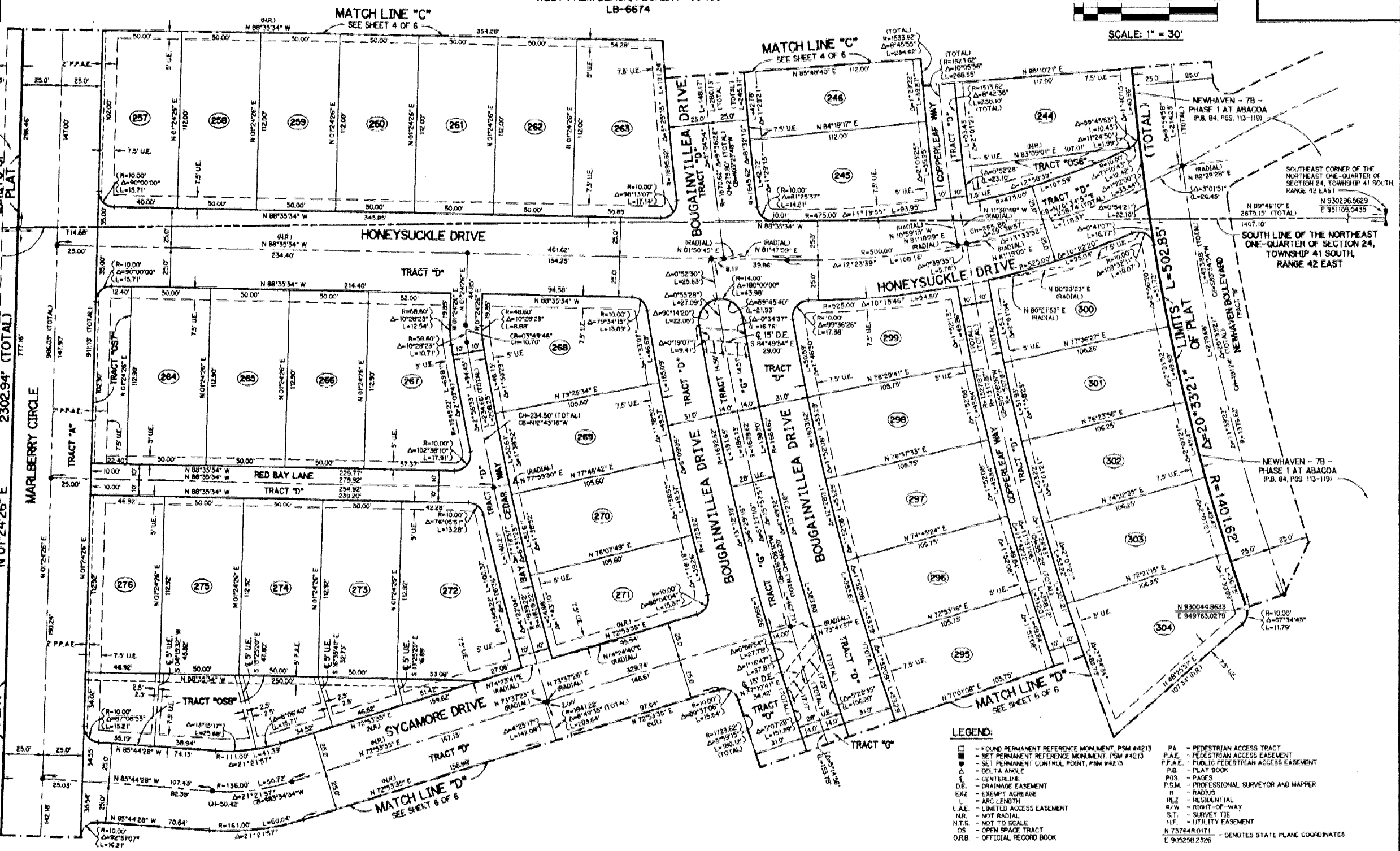
**NOTE:**  
COORDINATES SHOWN ARE GRID COORDINATES  
DATUM = NAD 83 (1990 ADJUSTMENT)  
ZONE = FLORIDA EAST ZONE  
LINEAR UNIT = U.S. SURVEY FEET  
COORDINATE SYSTEM 1983 STATE PLANE TRANSVERSE MERCATOR PROJECTION  
ALL DISTANCES ARE GROUND  
SCALE FACTOR = 1.000077  
N 89°21'50" E (GRID BEARING)  
N 89°21'50" E (GRID BEARING)  
0°00'02" = BEARING ROTATION - COUNTER CLOCKWISE (PLAT TO GRID)



**KEY MAP**  
N.T.S.

ABACOA REPLAT OF TRACT WKS P.B. 85 PG. 7  
SOUTHWEST CORNER OF THE NORTHEAST ONE-QUARTER OF SECTION 24, TOWNSHIP 41 SOUTH, RANGE 42 EAST  
N 89°46'10" E 2675.15' (TOTAL)  
N 93°02'55.7361 E 553.28'  
E 94°43'55.8974

ABACOA REPLAT OF TRACT WKS P.B. 85 PG. 7  
SOUTH LINE OF THE NORTHEAST ONE-QUARTER OF SECTION 24, TOWNSHIP 41 SOUTH, RANGE 42 EAST  
N 01°24'26" E 2302.94' (TOTAL)  
MARLBERRY CIRCLE



- LEGEND:**
- = FOUND PERMANENT REFERENCE MONUMENT, PSM #4213
  - = SET PERMANENT REFERENCE MONUMENT, PSM #4213
  - ▲ = SET PERMANENT CONTROL POINT, PSM #4213
  - Δ = DELTA ANGLE
  - = CENTERLINE
  - DE = DRAINAGE EASEMENT
  - EXZ = EXEMPT ACRES
  - L = ARC LENGTH
  - L.A.E. = LIMITED ACCESS EASEMENT
  - N.R. = NOT RADIAL
  - N.T.S. = NOT TO SCALE
  - OS = OPEN SPACE TRACT
  - O.R.B. = OFFICIAL RECORD BOOK
  - PA = PEDESTRIAN ACCESS TRACT
  - P.A.E. = PEDESTRIAN ACCESS EASEMENT
  - P.P.A.E. = PUBLIC PEDESTRIAN ACCESS EASEMENT
  - P.B. = PLAT BOOK
  - PGS. = PAGES
  - P.S.M. = PROFESSIONAL SURVEYOR AND MAPPER
  - R = RADIUS
  - RESZ = RESIDENTIAL
  - R/W = RIGHT-OF-WAY
  - S.T. = SURVEY TIE
  - U.E. = UTILITY EASEMENT
  - N 73°26'48.0171 E 905258.2326 = DENOTES STATE PLANE COORDINATES