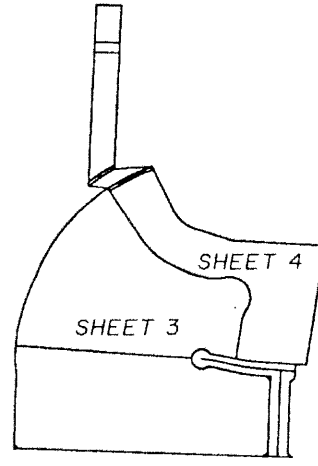


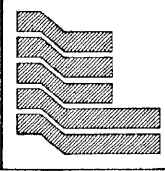
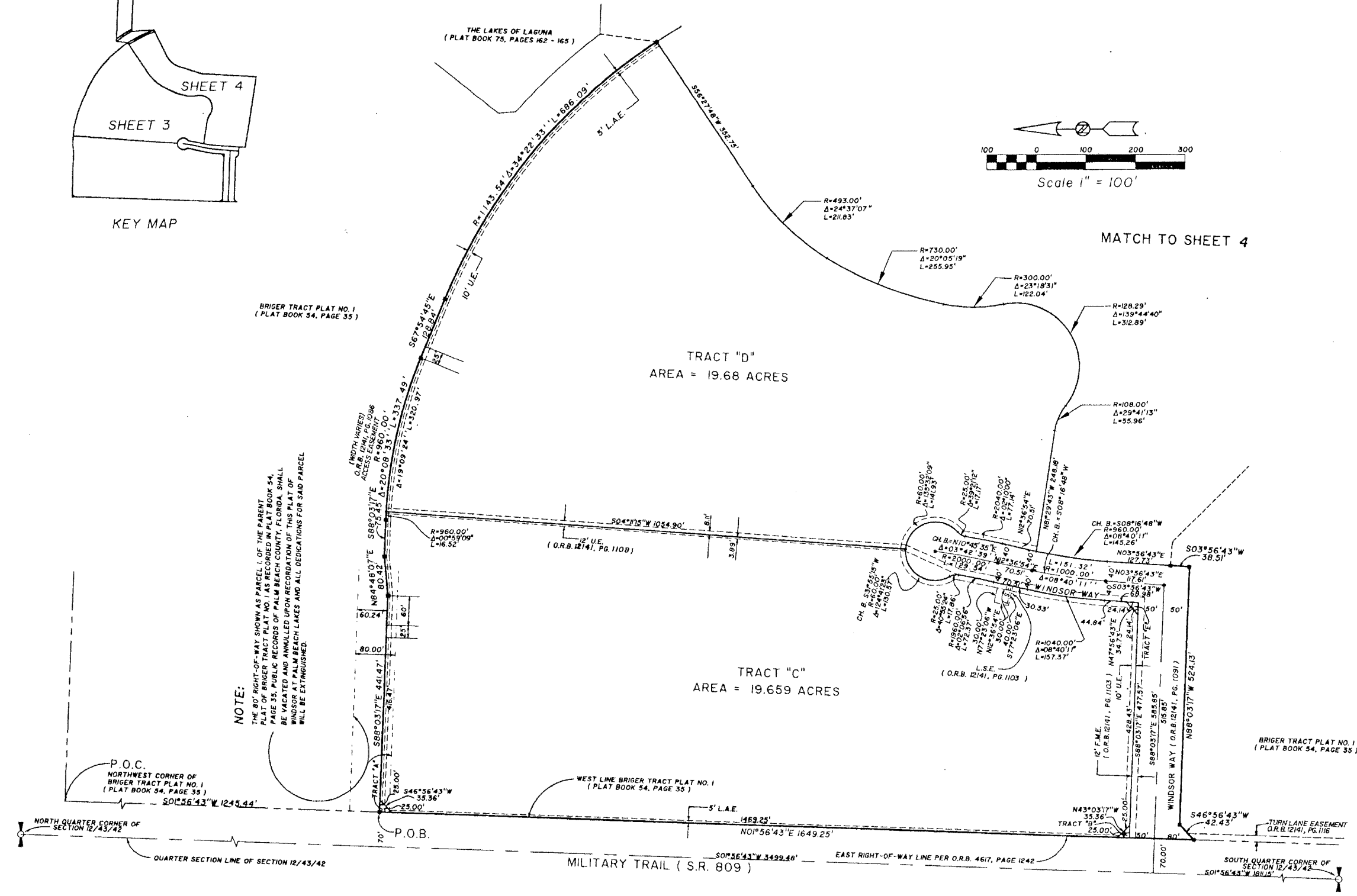
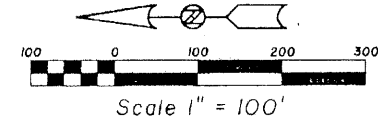
WINDSOR AT PALM BEACH LAKES

BEING A REPLAT OF A PORTION OF BRIGER TRACT PLAT NO. 1, AS RECORDED
PLAT BOOK 54, PAGE 35, PUBLIC RECORDS OF PALM BEACH COUNTY, FLORIDA, LYING IN SECTION 12,
TOWNSHIP 43 SOUTH, RANGE 42 EAST, CITY OF WEST PALM BEACH, PALM BEACH COUNTY, FLORIDA.
SHEET 3 OF 4

STATE OF FLORIDA
COUNTY OF PALM BEACH
THIS PLAT WAS FILED FOR RECORD AT
... M., THE ... DAY OF ... 2000
AND DULY RECORDED IN PLAT BOOK NO. ...
ON PAGE ...
DOROTHY H. WILKEN, CLERK OF THE CIRCUIT COURT
BY ... D.C.



KEY MAP



Landmark Surveying & Mapping Inc.
L.B. NO. 4396
1850 Forest Hill Boulevard
Ph. (561) 433-5405 Suite 100 W.P.B. Florida

WINDSOR AT
PALM BEACH LAKES