

BELLSOUTH RCA BOULEVARD

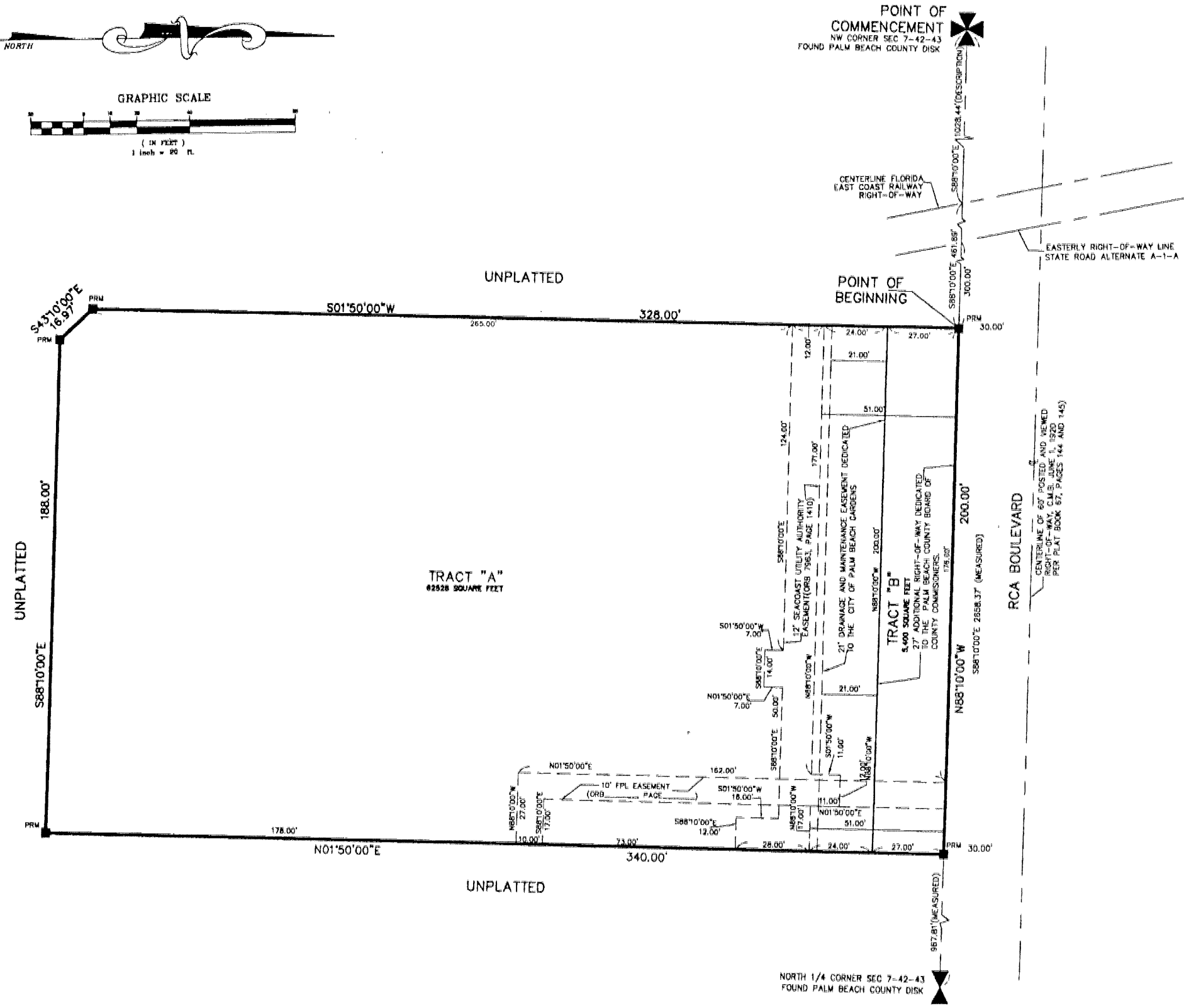
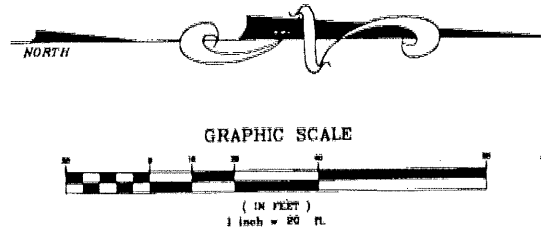
A PORTION OF SECTION 7, TOWNSHIP 42 SOUTH, RANGE 43 EAST,
CITY OF PALM BEACH GARDENS, PALM BEACH COUNTY, FLORIDA

124

STATE OF FLORIDA
COUNTY OF PALM BEACH
THIS PLAT WAS FILED FOR
RECORD AT _____ M.
THIS _____ DAY OF _____
A.D. 2000 AND DULY RECORDED
IN PLAT BOOK _____ ON
PAGES _____ AND _____
DOROTHY H. WILKEN
CLERK CIRCUIT COURT

BY: _____
DEPUTY CLERK

SHEET 2 OF 2



PREPARED BY
DAVID P. LINDLEY
OF
CAULFIELD and WHEELER, INC.
ENGINEERS - PLANNERS - SURVEYORS
7301-A WEST PALMETTO PARK ROAD, SUITE 100A
BOCA RATON, FLORIDA 33433 - (561)392-1991
APRIL - 2000

- SURVEY NOTES:**
- BUILDING SETBACK LINES SHALL BE AS REQUIRED BY CURRENT CITY OF PALM BEACH GARDENS ZONING REGULATIONS.
 - P.R.M. = INDICATES SET 4" x 4" x 24" PERMANENT REFERENCE MONUMENT MARKED LB 3591
 - U.E. - INDICATES UTILITY EASEMENT.
 - D.E. - INDICATES DRAINAGE EASEMENT.
 - "NOTICE" THIS PLAT, AS RECORDED IN ITS GRAPHIC FORM, IS THE OFFICIAL DEPICTION OF THE SUBDIVIDED LANDS DESCRIBED HEREIN AND WILL IN NO CIRCUMSTANCES BE SUPPLANTED IN AUTHORITY BY ANY OTHER GRAPHIC OR DIGITAL FORM OF THE PLAT. THERE MAY BE ADDITIONAL RESTRICTIONS THAT ARE NOT RECORDED ON THIS PLAT THAT MAY BE FOUND IN THE PUBLIC RECORDS OF PALM BEACH COUNTY.
 - ESMT. - EASEMENT
 - BEARINGS SHOWN HEREON ARE RELATIVE TO THE DESCRIPTION, BASED UPON THE NORTH LINE OF SECTION 7-42-43, BEARING S88°10'00"E.