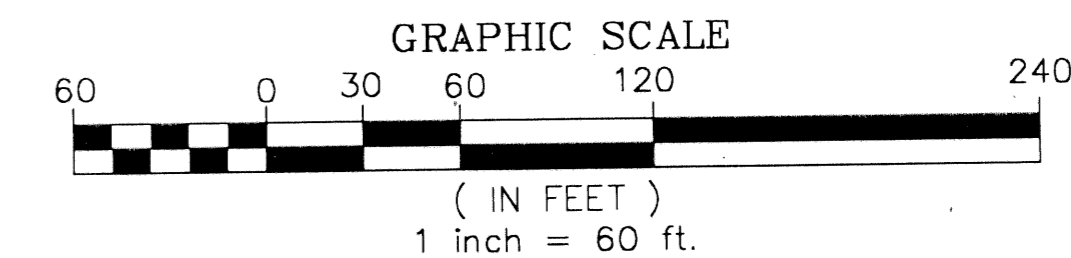


# TUSCANY - PARCEL A/B

0726-004

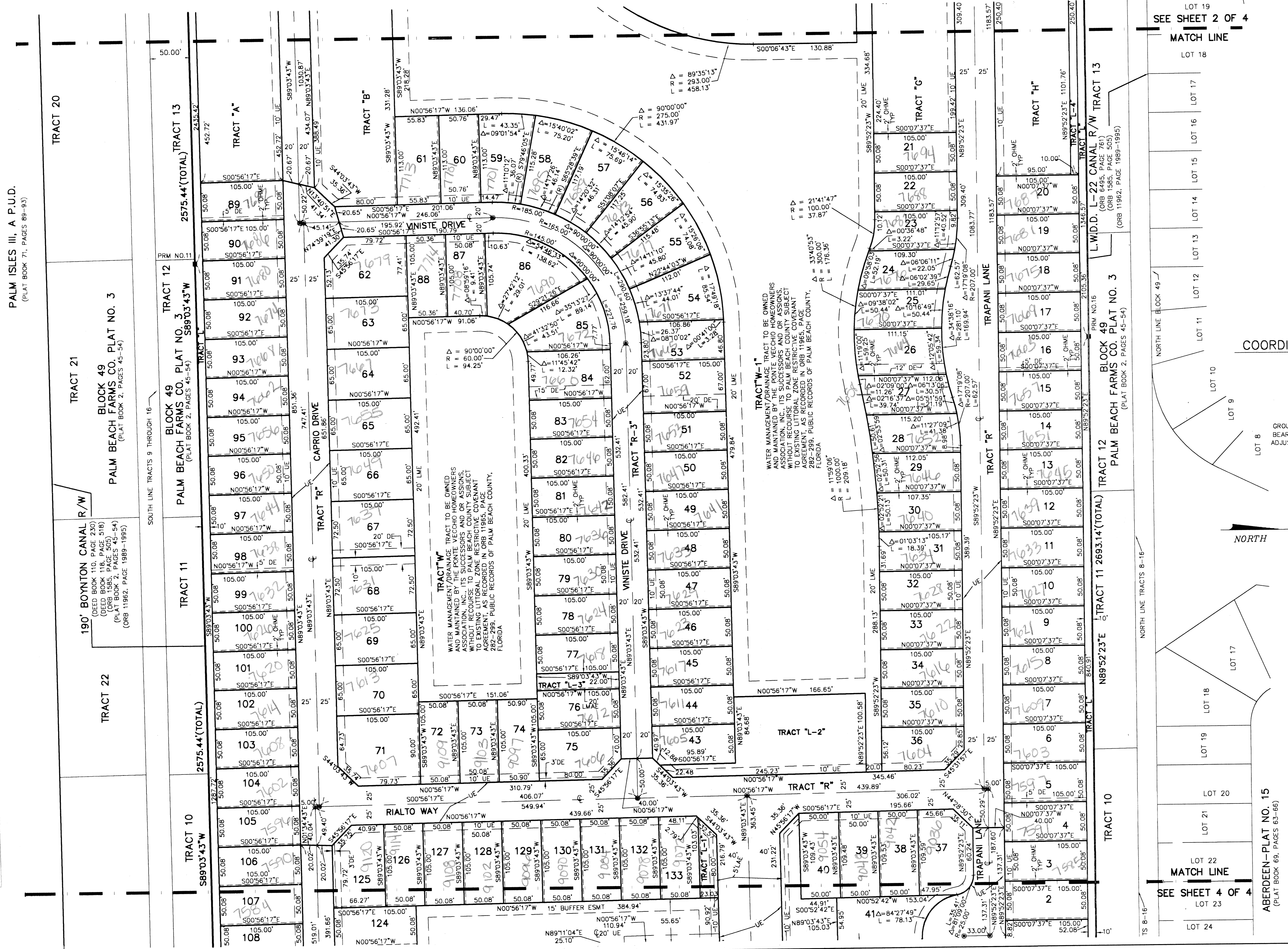
147

A PLANNED UNIT DEVELOPMENT BEING A PART CIBA GEIGY PUD  
 BEING A REPLAT OF PORTIONS OF TRACTS 8 THROUGH 16 AND A PORTION OF THAT CERTAIN 30 FOOT ROAD  
 RIGHT OF WAY LYING BETWEEN TRACTS 8 AND 9, BLOCK 49, PALM BEACH FARMS CO. PLAT NO. 3, SECTIONS 20 AND 21, TOWNSHIP 45 SOUTH, RANGE 42 EAST, ACCORDING TO THE PLAT  
 THEREOF AS RECORDED IN PLAT BOOK 2, PAGES 45 THROUGH 54, OF THE PUBLIC RECORDS  
 OF PALM BEACH COUNTY, FLORIDA



STATE OF FLORIDA  
 COUNTY OF PALM BEACH  
 THIS PLAT WAS FILED FOR  
 RECORD AT \_\_\_\_\_ M.  
 THIS \_\_\_\_\_ DAY OF \_\_\_\_\_  
 A.D. 2000 AND DULY RECORDED  
 IN PLAT BOOK \_\_\_\_\_ ON  
 PAGES \_\_\_\_\_ AND \_\_\_\_\_  
 DOROTHY H. WILKEN  
 CLERK CIRCUIT COURT  
 BY: \_\_\_\_\_  
 DEPUTY CLERK

SHEET 3 OF 4

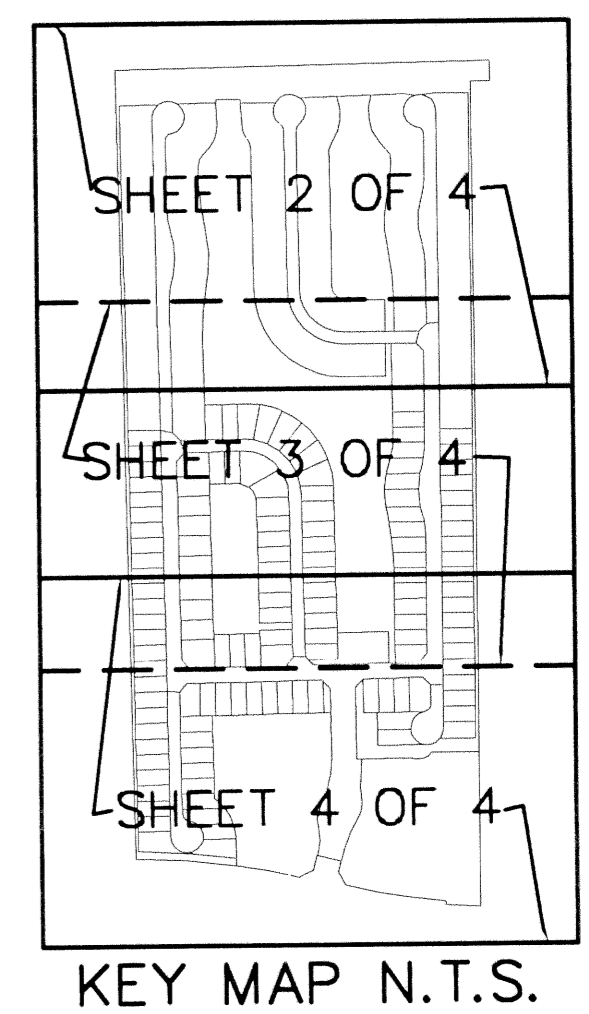


COORDINATE TABLE

PRM NO.	NORTHING	EASTING
1	803729.94	929593.75
2	803616.50	929586.81
3	803617.54	929574.86
4	803292.29	929520.99
5	803266.97	929477.45
6	803277.09	929441.75
7	803200.13	929419.92
8	803186.03	929469.64
9	803143.91	929494.06
10	802612.02	929428.08
11	802590.94	928140.49
12	803723.97	926900.55
13	803726.96	928247.15
14	802569.85	926852.91
15	803784.73	926833.01

NOTES  
 COORDINATES, BEARINGS AND DISTANCES  
 COORDINATES SHOWN ARE GRID  
 DATUM = NAD 83 1990 ADJUSTMENT  
 ZONE = FLORIDA EAST  
 LINEAR UNIT = US SURVEY FEET  
 COORDINATE SYSTEM 1983 STATE PLANE  
 TRANSVERSE MERCATOR PROJECTION  
 ALL DISTANCES ARE GROUND  
 SCALE FACTOR = 1.0000287  
 GROUND DISTANCE X SCALE FACTOR = GRID DISTANCE  
 BEARINGS AS SHOWN HEREON ARE GRID DATUM, NAD 83 1990  
 ADJUSTMENT, FLORIDA EAST ZONE.

NORTH



SUBDIVISION Tuscan - Parcel A/B  
 BOOK 89 PAGE 147  
 FLOOD MAP # 185A  
 FLOOD ZONE 6  
 QUAZ # 50  
 SEAZ 449 & 1010  
 PUD NAME CIBA GEIGY PUD

LOT 19  
 SEE SHEET 2 OF 4  
 MATCH LINE

LOT 22  
 MATCH LINE  
 SEE SHEET 4 OF 4

3786