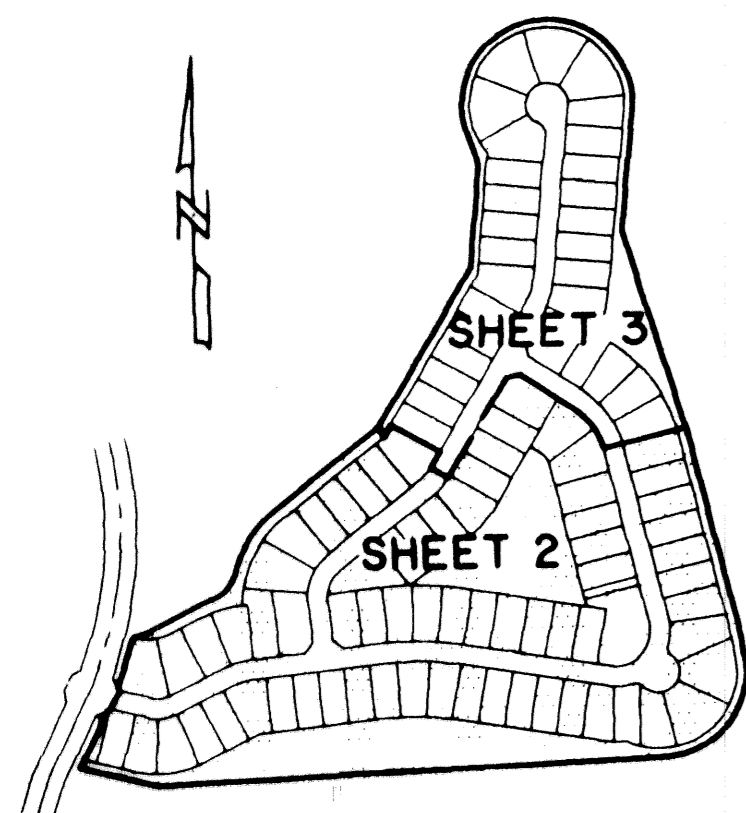


# DELRAY TRAINING CENTER P.U.D. - PARCEL E

064-012

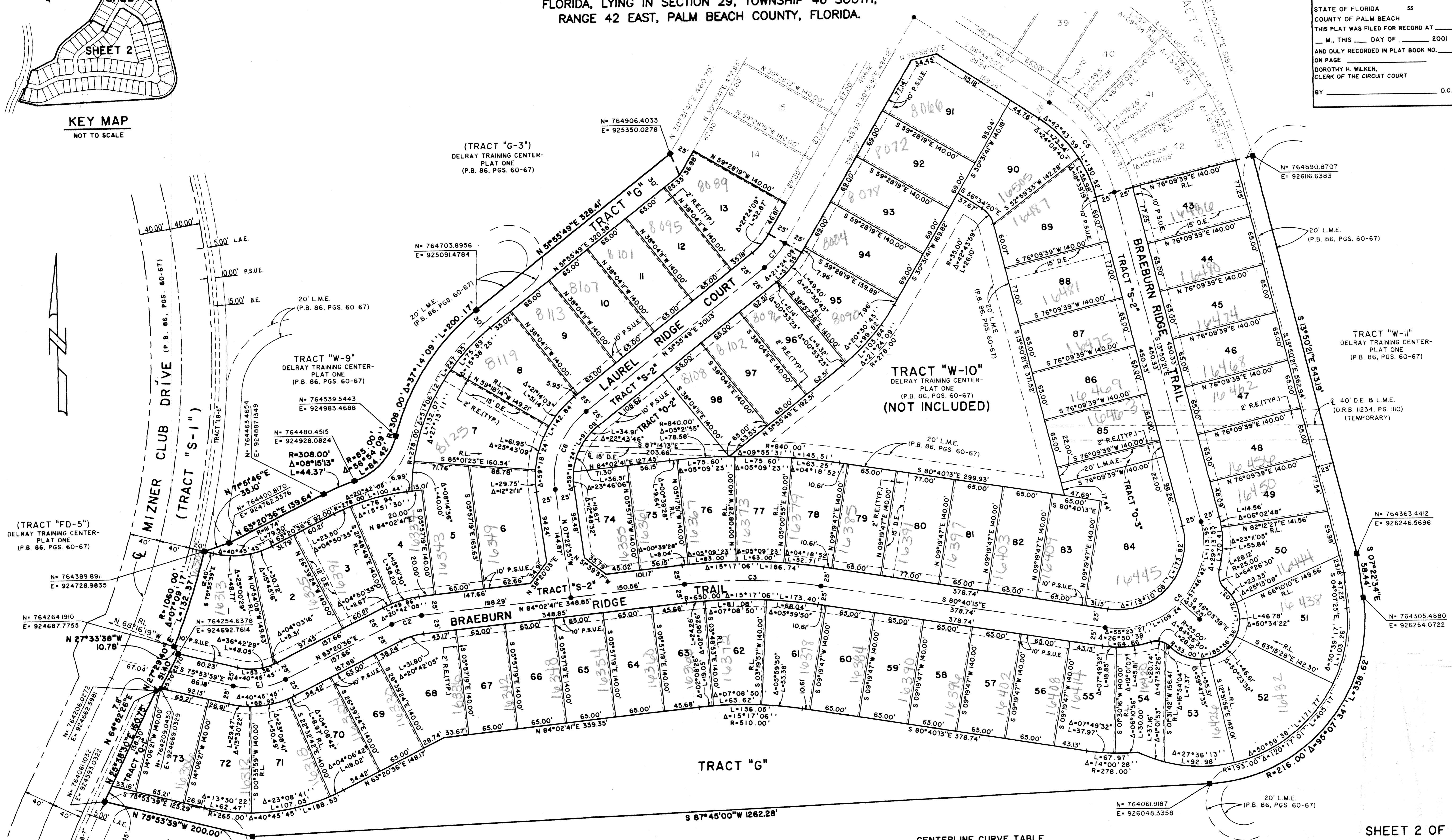
150

A PLANNED UNIT DEVELOPMENT  
 BEING A REPLAT OF TRACT "FD-2", DELRAY TRAINING CENTER - PLAT ONE, AS RECORDED IN  
 PLAT BOOK 86, PAGES 60 THROUGH 67, PUBLIC RECORDS OF PALM BEACH COUNTY,  
 FLORIDA, LYING IN SECTION 29, TOWNSHIP 46 SOUTH,  
 RANGE 42 EAST, PALM BEACH COUNTY, FLORIDA.



KEY MAP  
 NOT TO SCALE

STATE OF FLORIDA SS  
 COUNTY OF PALM BEACH  
 THIS PLAT WAS FILED FOR RECORD AT  
 M., THIS DAY OF 2001  
 AND DULY RECORDED IN PLAT BOOK NO. \_\_\_\_\_  
 ON PAGE \_\_\_\_\_  
 DOROTHY H. WILKEN,  
 CLERK OF THE CIRCUIT COURT  
 BY \_\_\_\_\_ D.C.



(TRACT "FD-5")  
 DELRAY TRAINING CENTER -  
 PLAT ONE  
 (P.B. 86, PGS. 60-67)

TRACT "W-9"  
 DELRAY TRAINING CENTER -  
 PLAT ONE  
 (P.B. 86, PGS. 60-67)

(TRACT "G-3")  
 DELRAY TRAINING CENTER -  
 PLAT ONE  
 (P.B. 86, PGS. 60-67)

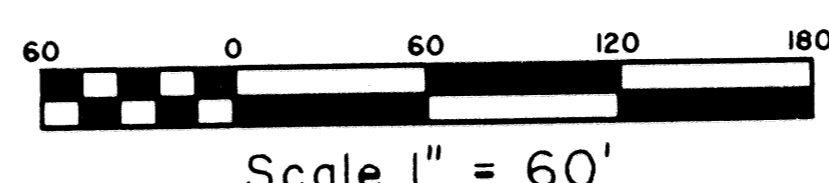
TRACT "W-10"  
 DELRAY TRAINING CENTER -  
 PLAT ONE  
 (P.B. 86, PGS. 60-67)  
 (NOT INCLUDED)

TRACT "W-11"  
 DELRAY TRAINING CENTER -  
 PLAT ONE  
 (P.B. 86, PGS. 60-67)

TRACT "G"  
 DELRAY TRAINING CENTER -  
 PLAT ONE  
 (P.B. 86, PGS. 60-67)

(TRACT "G-1")  
 DELRAY TRAINING CENTER -  
 PLAT ONE  
 (P.B. 86, PGS. 60-67)

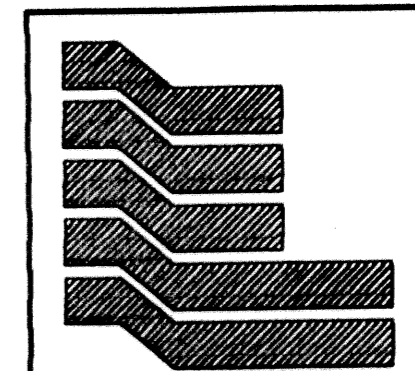
**COORDINATE NOTE:**  
 STATE PLANE COORDINATES SHOWN ARE GRID DATUM, NAD 83 1990  
 ADJUSTMENT, FLORIDA EAST ZONE, COORDINATE SYSTEM 1983 STATE  
 PLANE, TRANSVERSE MERCATOR PROJECTION  
 LINEAR UNIT = US SURVEY FEET  
 ALL DISTANCES ARE GROUND  
 SCALE FACTOR = 1.000020427035  
 GROUND DISTANCE X SCALE FACTOR = GRID DISTANCE  
 BEARINGS AS SHOWN HERON ARE GRID DATUM, NAD 83 1990  
 ADJUSTMENT, FLORIDA EAST ZONE.



CENTERLINE CURVE TABLE

NUMBER	RADIUS	DELTA ANGLE	ARC LENGTH	CHORD DIRECTION	CHORD LENGTH
C1	100.00	40°45'45"	71.4	N 83°43'28" E	69.65
C2	113.00	20°42'05"	40.83	N 73°41'39" E	40.61
C3	675.00	18°17'06"	180.07	S 88°18'46" E	179.54
C4	113.00	13°10'08"	223.19	N 42°44'43" E	188.64
C5	200.00	42°43'59"	149.17	N 35°12'20" W	145.73
C6	113.00	24°51'36"	49.03	S 18°05'52" W	48.65
C7	113.00	2°24'09"	42.21	S 4°13'45" W	41.97
C8	113.00	59°18'24"	116.97	S 22°16'37" W	111.81

SHEET 2 OF 3



**Landmark Surveying & Mapping Inc.**  
 1850 Forest Hill Boulevard  
 Ph. (561) 433-5405 Suite 100 W.P.B. Florida  
 LB # 4396

**DELRAY TRAINING CENTER P.U.D. - PARCEL E**

SUBDIVISION DELRAY TRAINING CENTER P.U.D.  
 BOOK 86  
 FLOOD ZONE B  
 QUAD #52  
 SE  
 TAZ 7162  
 FUD NAME: Delray Training Center P.U.D.