

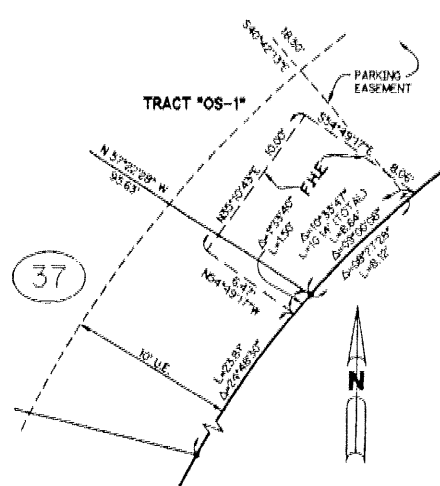
# CATALINA LAKES

A PARCEL OF LAND LYING IN SECTION 7, TOWNSHIP 42 SOUTH, RANGE 43 EAST  
CITY OF PALM BEACH GARDENS, PALM BEACH COUNTY, FLORIDA  
SHEET 3 OF 6 JANUARY, 2001



SCALE: 1" = 40'

LIMITS OF PLAT



DETAIL "D"  
SCALE 1" = 5'

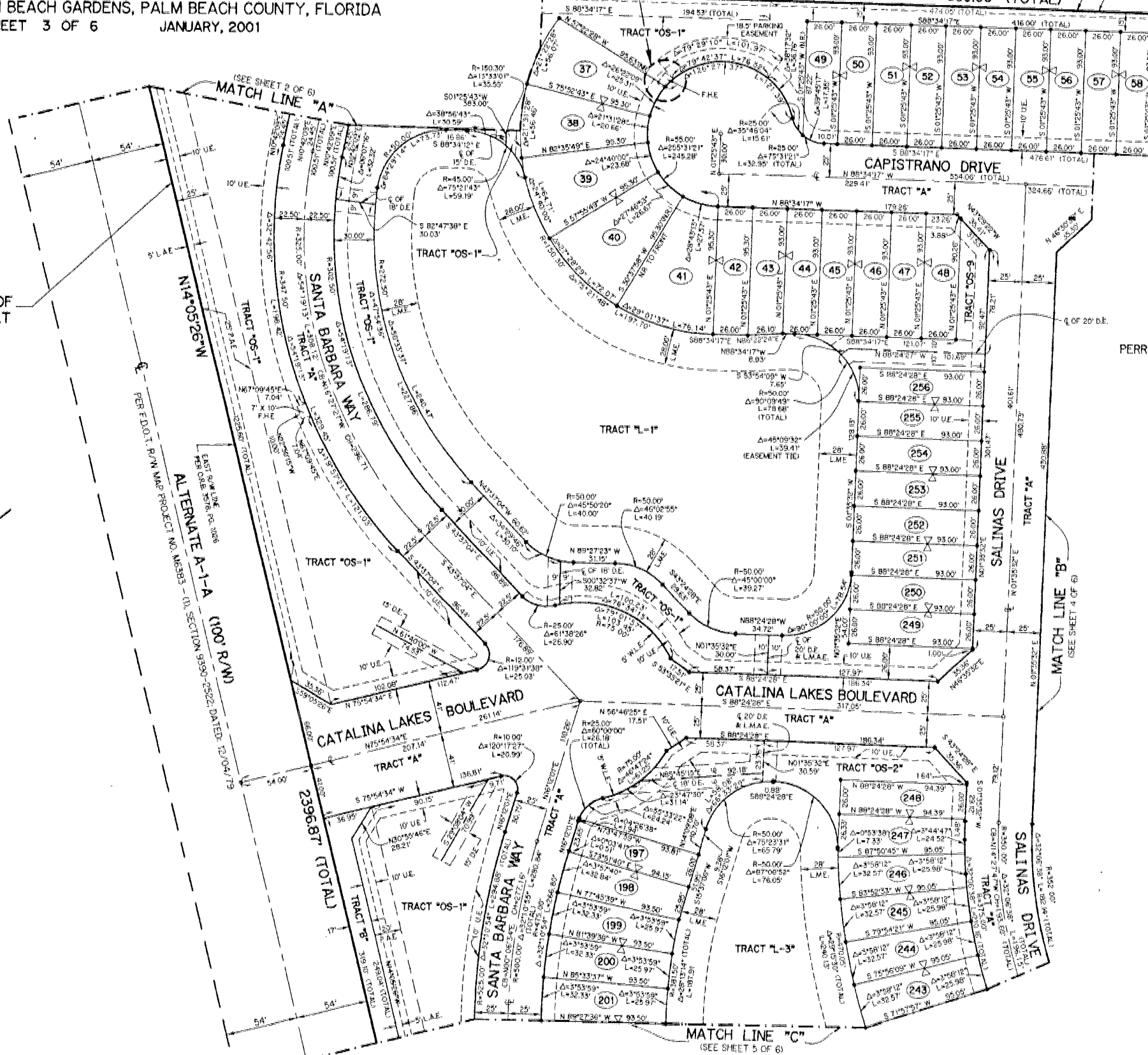
### LEGEND:

- - SET PERMANENT REFERENCE MONUMENT NO. L.B. 6674
- - SET PERMANENT CONTROL POINT NO. L.B. 6674
- - SET 5/8" IRON ROD WITH CAP NO. L.B. 6674
- - FOUND PERMANENT REFERENCE MONUMENT
- Δ - DELTA ANGLE
- BT - BUFFER TRACT
- CL - CENTERLINE
- CB - CHORD BEARING
- CH - CHORD LENGTH
- D.B. - DEED BOOK
- D.E. - DRAINAGE EASEMENT
- F.H.E. - FIRE HYDRANT EASEMENT
- L - ARC LENGTH
- L.A.E. - LIMITED ACCESS EASEMENT
- L.M.A.E. - LAKE MAINTENANCE ACCESS EASEMENT
- OM - MEASURED DIMENSION
- ORJ - NON-RADIAL
- N.T.S. - NOT TO SCALE
- OS - OPEN SPACE TRACT
- O.R.B. - OFFICIAL RECORD BOOK
- PI - PLAT DIMENSION
- P.B. - PLAT BOOK
- P.G.S. - PAGES
- P.A.E. - PUBLIC ACCESS EASEMENT
- R - RADIUS
- S.E. - SIDEWALK EASEMENT
- U.E. - UTILITY EASEMENT
- ⊗ - INDICATES COMMON BUILDING LINE
- W.L.E. - WATER LINE EASEMENT
- W.M.E. - WALL MAINTENANCE EASEMENT
- N.P.B.C.I.D. - NORTHERN PALM BEACH COUNTY IMPROVEMENT DISTRICT

(UNPLATTED)  
**A C R E A G E**  
AMARA TEMPLE HOLDING CORPORATION, INC.  
(O.R.B. 2628, PG. 1165, 1167 & O.R.B. 8239, PG. 558)

LIMITS OF PLAT  
SOUTH LINE A.T.H.C. PARCEL O.R.B. 8238, PG. 558

100



THIS INSTRUMENT PREPARED BY  
PERRY C. WHITE, P.S.M. 4213, STATE OF FLORIDA  
LAWSON, NOBLE AND WEBB, INC.  
ENGINEERS PLANNERS SURVEYORS  
420 COLUMBUS DRIVE, SUITE 110  
WEST PALM BEACH, FLORIDA 33409  
LB 6674

