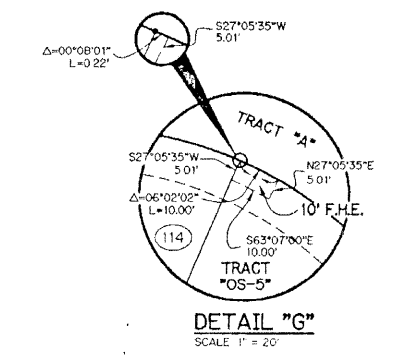
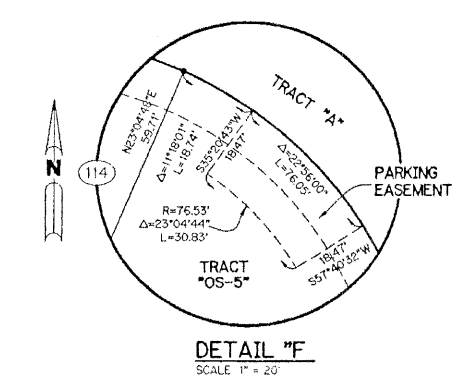
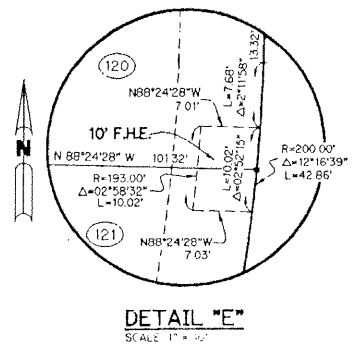
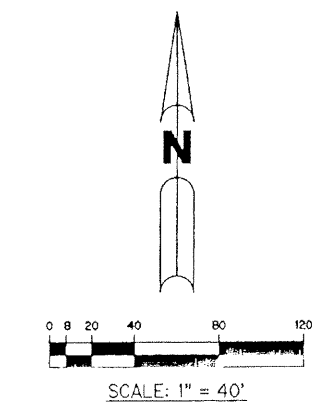


# CATALINA LAKES

A PARCEL OF LAND LYING IN SECTION 7, TOWNSHIP 42 SOUTH, RANGE 43 EAST  
CITY OF PALM BEACH GARDENS, PALM BEACH COUNTY, FLORIDA  
SHEET 4 OF 6 JANUARY, 2001

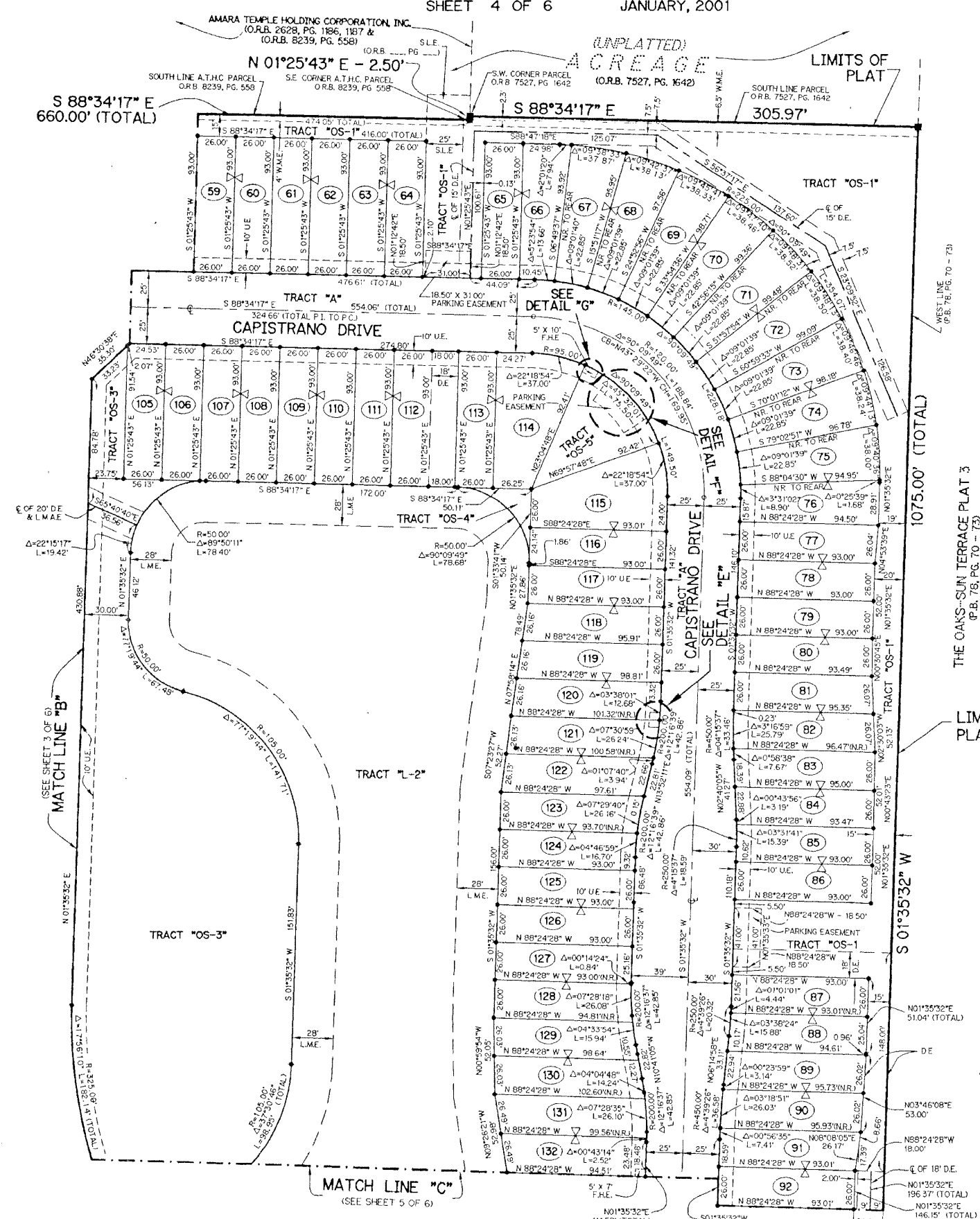
167

THIS INSTRUMENT PREPARED BY  
PERRY C. WHITE, P.S.M. 4213, STATE OF FLORIDA  
LAWSON, NOBLE AND WEBB, INC.  
ENGINEERS PLANNERS SURVEYORS  
420 COLUMBUS DRIVE, SUITE 110  
WEST PALM BEACH, FLORIDA 33409  
LB 6674

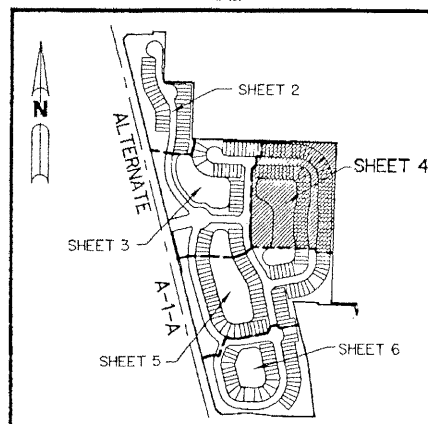


**LEGEND:**

- - SET PERMANENT REFERENCE MONUMENT, L.B. #6674
- - SET PERMANENT CONTROL POINT, L.B. NO. 6674
- - SET 5/8" IRON ROD WITH CAP NO. L.B. 6674
- - FOUND PERMANENT REFERENCE MONUMENT
- Δ - DELTA ANGLE
- A TRAC. - AMARA TEMPLE HOLDING CORPORATION
- BT - BUFFER TRACT
- CL - CENTERLINE
- CB - CHORD BEARING
- CH - CHORD LENGTH
- DB - DEED BOOK
- D.E. - DRAINAGE EASEMENT
- F.H.E. - FIRE HYDRANT EASEMENT
- L - ARC LENGTH
- L.A.E. - LIMITED ACCESS EASEMENT
- L.M.A.E. - LAKE MAINTENANCE ACCESS EASEMENT
- NRJ - NON-RADIAL
- NT.S. - NOT TO SCALE
- OS - OPEN SPACE TRACT
- OR.B. - OFFICIAL RECORD BOOK
- P.A.E. - PUBLIC ACCESS EASEMENT
- P.B. - PLAT BOOK
- PGS. - PAGES
- P.I. - POINT OF INTERSECTION
- P.C. - POINT OF CURVATURE
- R - RADIUS
- S.E. - SIDEWALK EASEMENT
- S.L.E. - SEWER LINE EASEMENT
- U.E. - UTILITY EASEMENT
- W.M.E. - WALL MAINTENANCE EASEMENT
- ⊗ - INDICATES COMMON BUILDING LINE
- NPSCID - NORTHERN PALM BEACH COUNTY IMPROVEMENT DISTRICT
- (P) - PLAT DIMENSION
- (M) - MEASURED DIMENSION



**KEY MAP**  
N.T.S.



A348 SHEET 4 OF 6